

Fortinet

Exam Questions FCSS_EFW_AD-7.6

FCSS - Enterprise Firewall 7.6 Administrator



NEW QUESTION 1

A company's users on an IPsec VPN between FortiGate A and B have experienced intermittent issues since implementing VXLAN. The administrator suspects that packets exceeding the 1500-byte default MTU are causing the problems.

In which situation would adjusting the interface's maximum MTU value help resolve issues caused by protocols that add extra headers to IP packets?

- A. Adjust the MTU on interfaces only if FortiGate has the FortiGuard enterprise bundle, which allows MTU modification.
- B. Adjust the MTU on interfaces in all FortiGate devices that support the latest family of Fortinet SPUs: NP7, CP9 and SP5.
- C. Adjust the MTU on interfaces in controlled environments where all devices along the path allow MTU interface changes.
- D. Adjust the MTU on interfaces only in wired connections like PPPoE, optic fiber, and ethernet cable.

Answer: C

NEW QUESTION 2

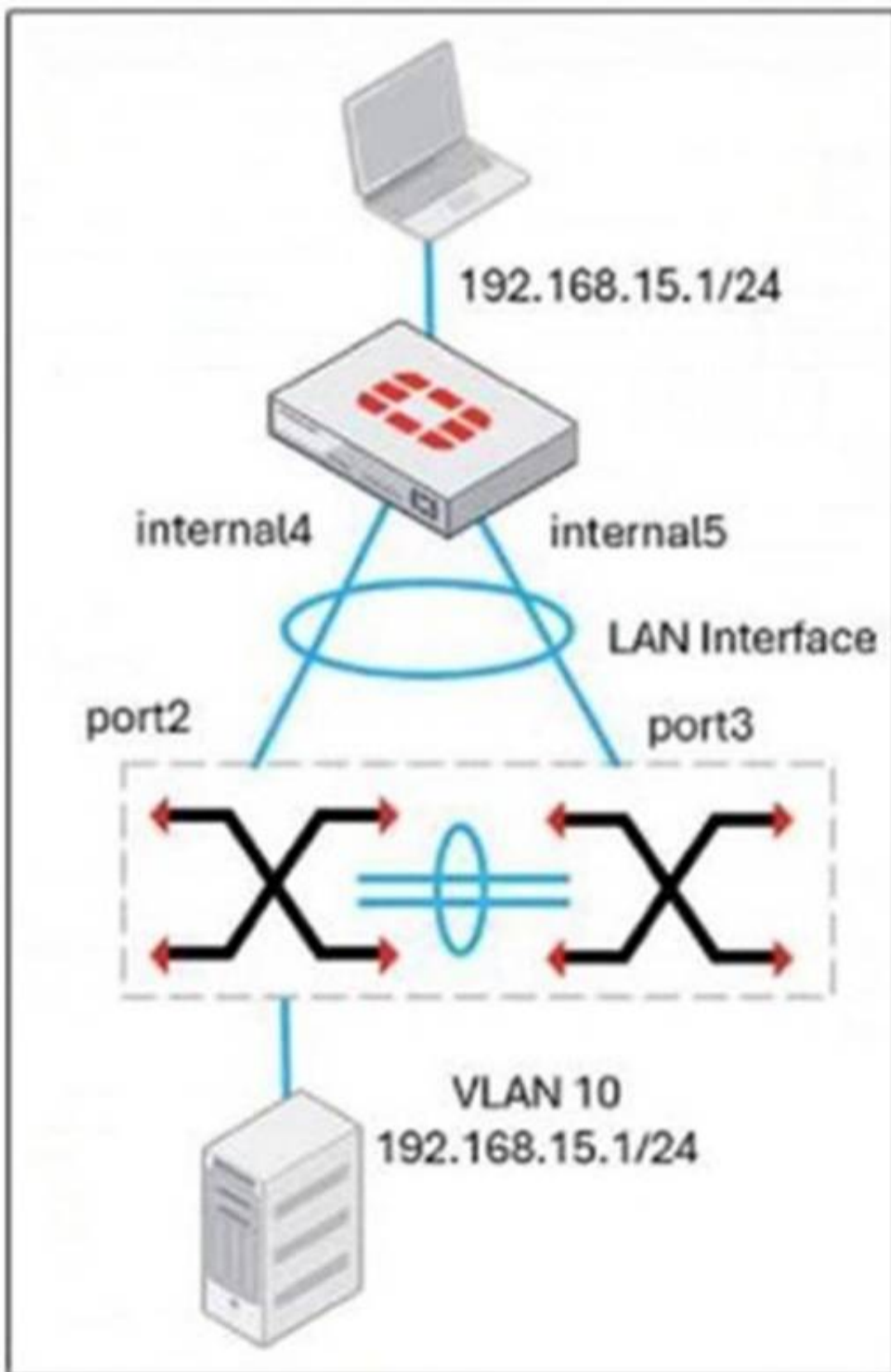
The IT department discovered during the last network migration that all zero phase selectors in phase 2 IPsec configurations impacted network operations. What are two valid approaches to prevent this during future migrations? (Choose two.)

- A. Use routing protocols to specify allowed subnets over the tunnel.
- B. Configure an IPsec-aggregate to create redundancy between each firewall peer.
- C. Clearly indicate to the VPN which segments will be encrypted in the phase two selectors.
- D. Configure an IP address on the IPsec interface of each firewall to establish unique peer connections and avoid impacting network operations.

Answer: AC

NEW QUESTION 3

Refer to the exhibit, which shows a LAN interface connected from FortiGate to two FortiSwitch devices.



What two conclusions can you draw from the corresponding LAN interface? (Choose two.)

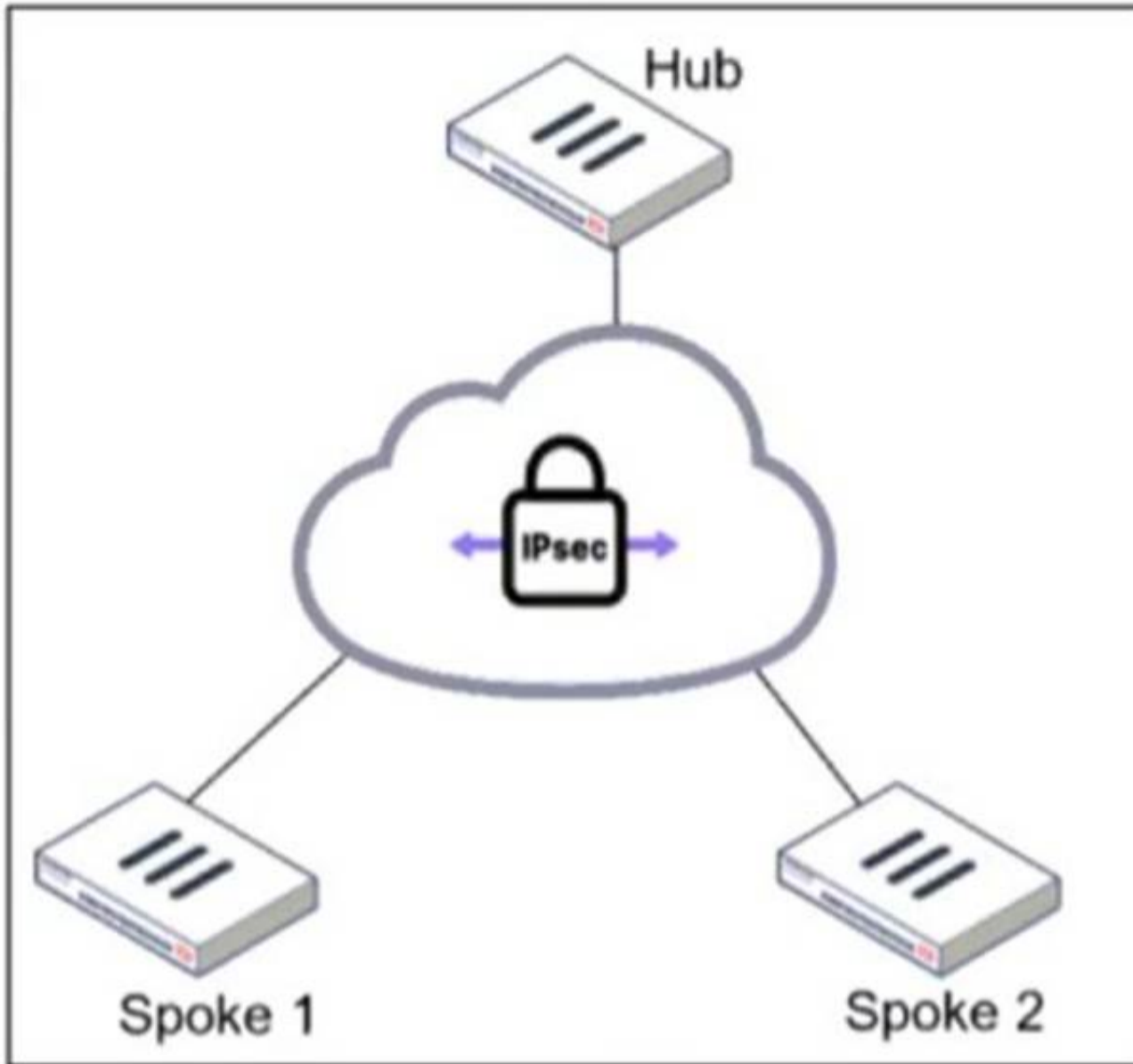
- A. You must enable STP or RSTP on FortiGate and FortiSwitch to avoid layer 2 loopbacks.
- B. The LAN interface must use a 802.3ad type interface.
- C. This connection is using a FortiLink to manage VLANs on FortiGate.

D. FortiGate is using an SD-WAN-type interface to connect to a FortiSwitch device with MCLAG.

Answer: BC

NEW QUESTION 4

Refer to the exhibit.



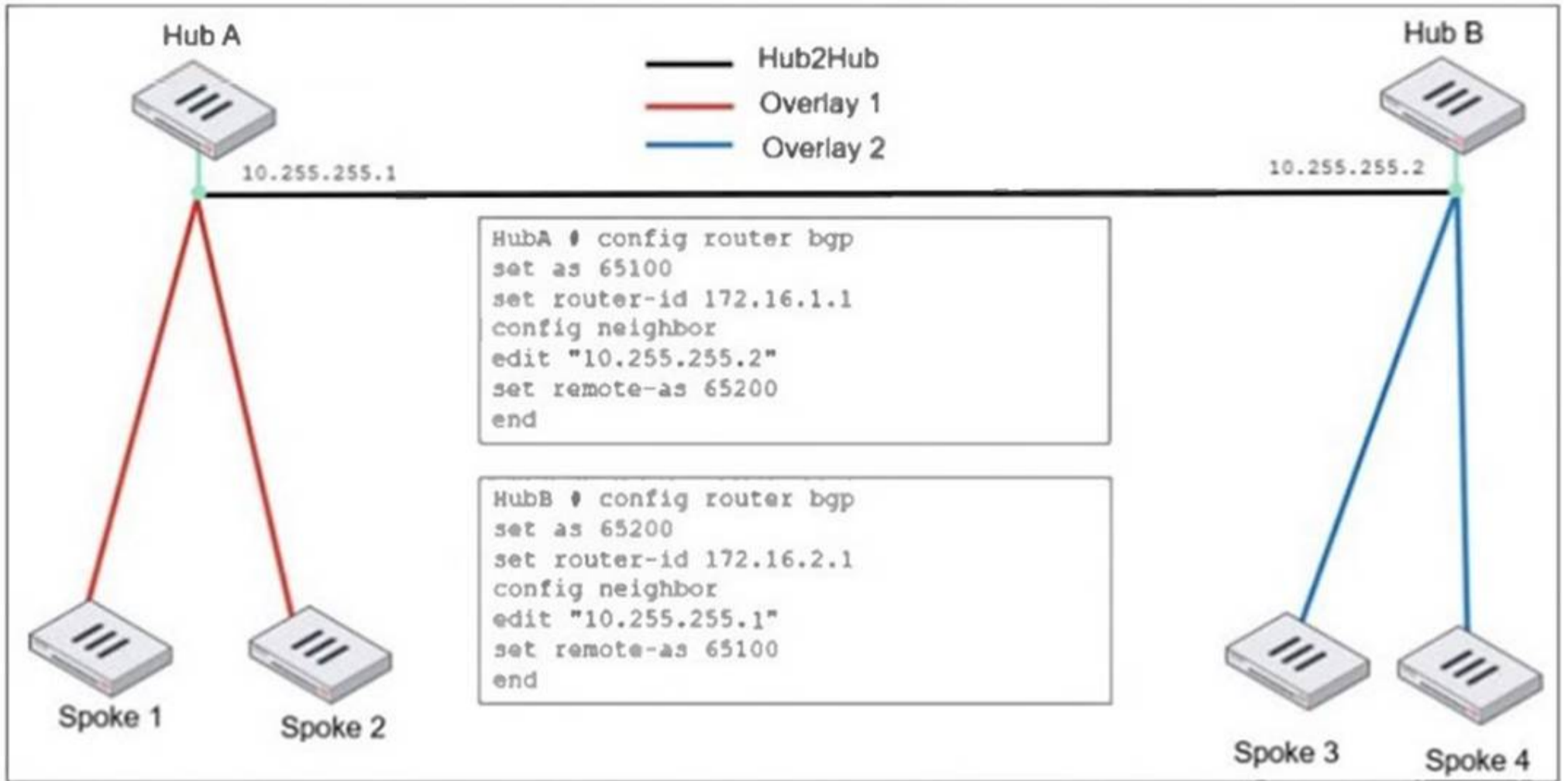
An administrator is deploying a hub and spokes network and using OSPF as dynamic protocol. Which configuration is mandatory for neighbor adjacency?

- A. Set bfd enable in the router configuration
- B. Set network-type point-to-multipoint in the hub interface
- C. Set rfc1583-compatible enable in the router configuration
- D. Set virtual-link enable in the hub interface

Answer: B

NEW QUESTION 5

Refer to the exhibit, which shows an ADVPN network



An administrator must configure an ADVPN using IBGP and EBGP to connect overlay network 1 with 2. What two options must the administrator configure in BGP? (Choose two.)

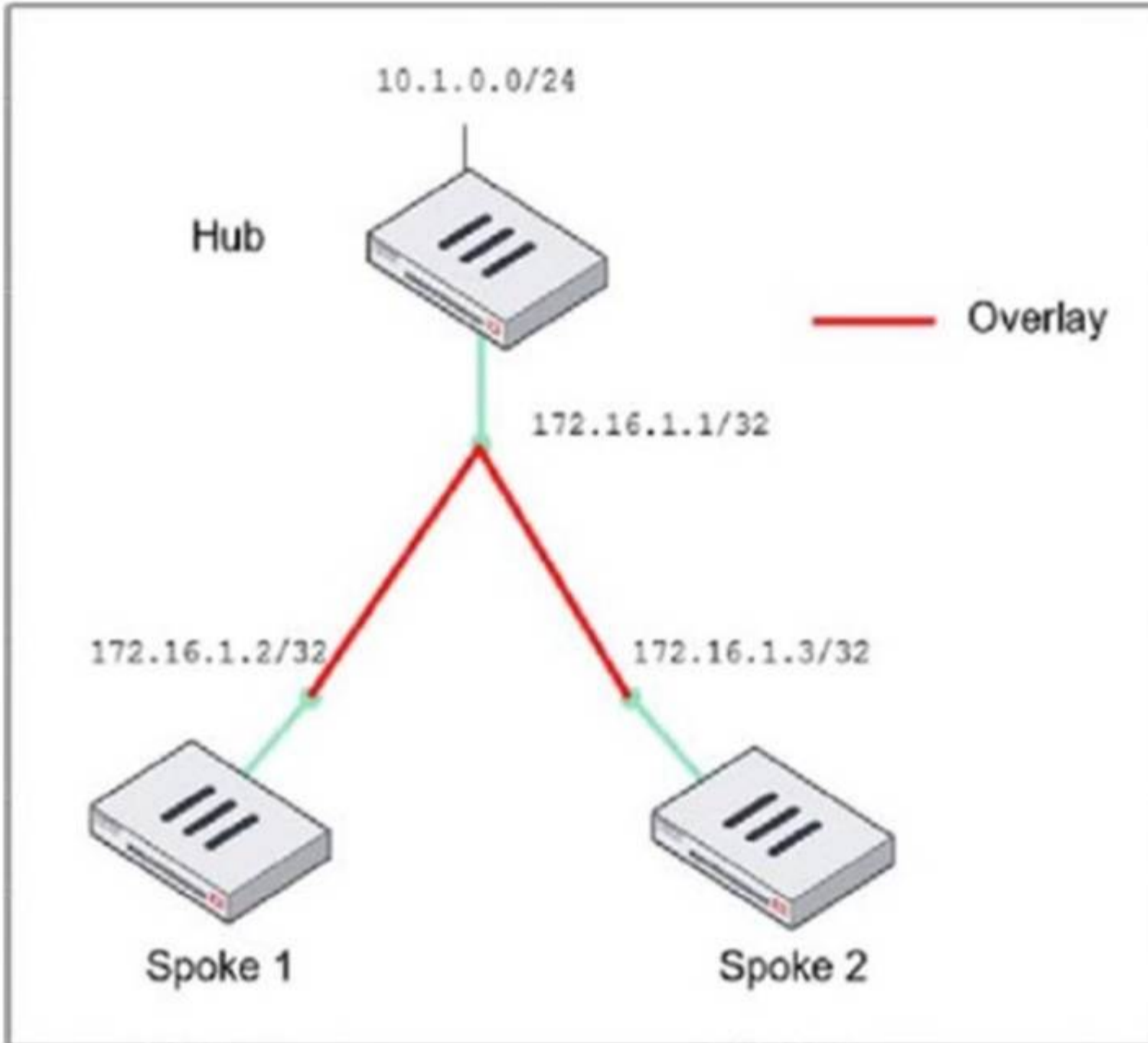
- A. set ebgp-enforce-multihop enable
- B. set next-hop-self enable
- C. set ibgp-enforce-multihop advpn
- D. set attribute-unchanged next-hop

Answer: AB

NEW QUESTION 6

Refer to the exhibit, which shows the ADVPN network topology and partial BGP configuration.

ADVPN network topology



Partial BGP configuration

```

Hub # config router bgp
set as 65100
set router-id 172.16.1.1
config neighbor-group
  edit "advpn"
  set remote-as 65100
  ...
end
config neighbor-range
  edit 1
  end
config network
  ..
end
    
```

Which two parameters must an administrator configure in the config neighbor range for spokes shown in the exhibit? (Choose two.)

- A. set max-neighbor-num 2
- B. set neighbor-group advpn
- C. set route-reflector-client enable
- D. set prefix 172.16.1.0 255.255.255.0

Answer: BD

NEW QUESTION 7

Refer to the exhibit, which contains the partial output of an OSPF command.

```
FortiGate # get router info ospf status
Routing Process "ospf 0" with ID 0.0.0.5
Process uptime is 0 minute
Process bound to VRF default
Conforms to RFC2328, and RFC1583Compatibility flag is enabled
Supports only single TOS(TOS0) routes
Supports opaque LSA
Do not support Restarting
This router is an ABR
```

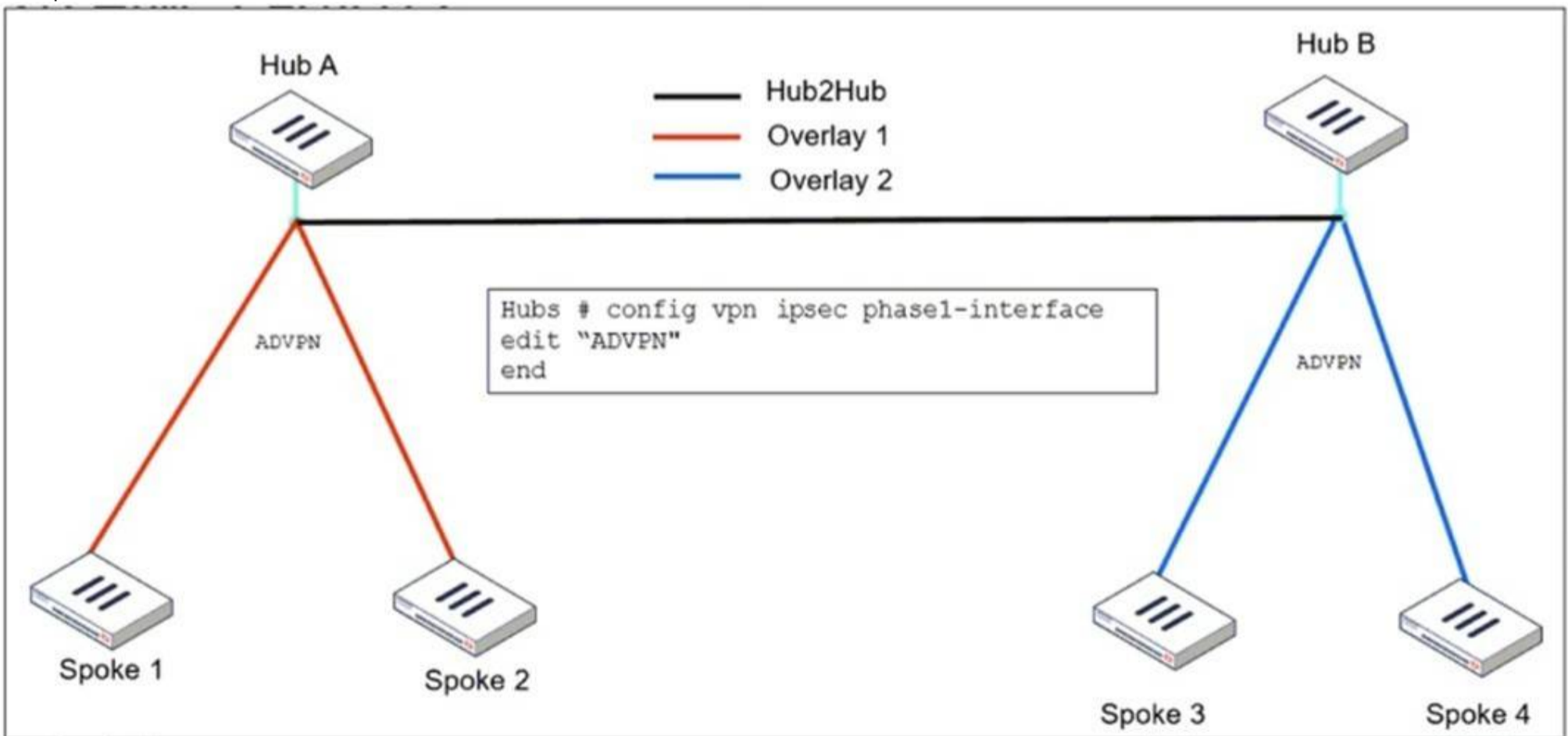
An administrator is checking the OSPF status of a FortiGate device and receives the output shown in the exhibit. What two conclusions can the administrator draw? (Choose two.)

- A. The FortiGate device is a backup designated router
- B. The FortiGate device is connected to multiple areas
- C. The FortiGate device injects external routing information
- D. The FortiGate device has OSPF ECMP enabled

Answer: BC

NEW QUESTION 8

Refer to the exhibit, which shows the ADVPN IPsec interface representing the VPN IPsec phase 1 from Hub A to Spoke 1 and Spoke 2, and from Hub to Spoke 3 and Spoke 4.



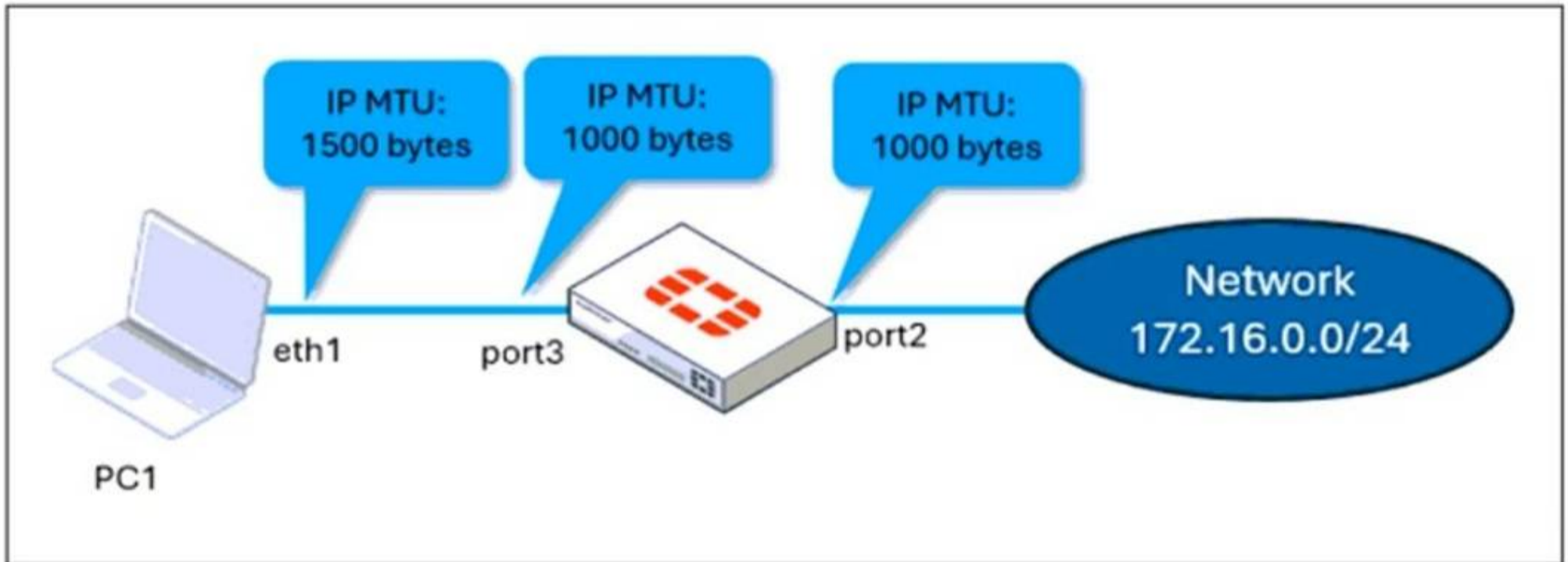
An administrator must configure an ADVPN using IBGP and EBGP to connect overlay network 1 with 2. What must the administrator configure in the phase 1 VPN IPsec configuration of the ADVPN tunnels?

- A. set auto-discovery-sender enable and set network-id x
- B. set auto-discovery-forwarder enable and set remote-as x
- C. set auto-discovery-crossover enable and set enforce-multihop enable
- D. set auto-discovery-receiver enable and set npu-offload enable

Answer: C

NEW QUESTION 9
 Refer to the exhibits.

Network topology



port 3 configuration on FortiGate

```
config system interface
edit "port3"
set vdom "root"
set ip 10.0.0.1 255.255.255.0
set allowaccess ping https ssh snmp http fgfm ftm
set type physical
set alias "LAN"
set snmp-index 3
set mtu-override enable
set mtu 1000
next
end
```

ping output

```
C:\Users\fortinet>ping 172.16.0.254 -f -l 1400

Pinging 172.16.0.254 with 1400 bytes of data:
Reply from 10.0.0.1: Packet needs to be fragmented but DF set.
Packet needs to be fragmented but DF set.
Packet needs to be fragmented but DF set.
Packet needs to be fragmented but DF set.

Ping statistics for 172.16.0.254:
Packets: Sent = 4, Received = 1, Lost = 3 (75% loss),
```

The configuration of a user's Windows PC, which has a default MTU of 1500 bytes, along with FortiGate interfaces set to an MTU of 1000 bytes, and the results of PC1 pinging server 172.16.0.254 are shown.

Why is the user in Windows PC1 unable to ping server 172.16.0.254 and is seeing the message: Packet needs to be fragmented but DF set?

- A. Option ip.flags.mf must be set to enable on FortiGate
- B. The user has to adjust the ping MTU to 1000 to succeed.
- C. Fragmented packets must be encrypted
- D. To connect any application successfully, the user must install the Fortinet_CA certificate in the Microsoft Management Console.
- E. FortiGate honors the do not fragment bit and the packets are dropped
- F. The user has to adjust the ping MTU to 972 to succeed.
- G. The user must trigger different traffic because path MTU discovery techniques do not recognize ICMP payloads.

Answer: C

NEW QUESTION 10

Refer to the exhibit, which shows a command output.

```
FortiGate_B # get system session list | grep icmp

FortiGate_B #
```

FortiGate_A and FortiGate_B are members of an FGSP cluster in an enterprise network. While testing the cluster using the ping command, the administrator monitors packet loss

and found that the session output on FortiGate_B is as shown in the exhibit.

What could be the cause of this output on FortiGate_B?

- A. The session synchronization is encrypted.
- B. session-pickup-connectionless is set to disable on FortiGate_B.
- C. FortiGate_B is configured in passive mode.
- D. FortiGate_A and FortiGate_B have the same standalone-group-id value.

Answer: B

NEW QUESTION 10

During the maintenance window, an administrator must sniff all the traffic going through a specific firewall policy, which is handled by NP6 interfaces. The output of the sniffer trace provides just a few packets.

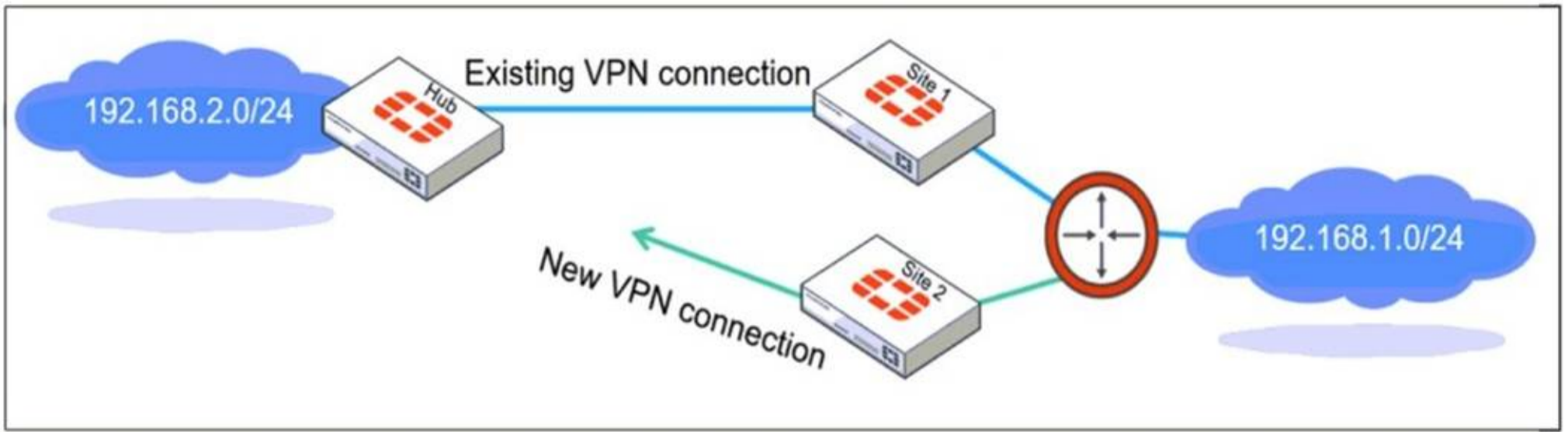
Why is the output of sniffer trace limited?

- A. The traffic corresponding to the firewall policy is encrypted.
- B. auto-asic-off load is set to enable in the firewall policy,
- C. inspection-mode is set to proxy in the firewall policy.
- D. The option npudbg is not added in the diagnose sniff packet command.

Answer: B

NEW QUESTION 13

Refer to the exhibit, which shows a network diagram showing the addition of site 2 with an overlapping network segment to the existing VPN IPsec connection between the hub and site 1.



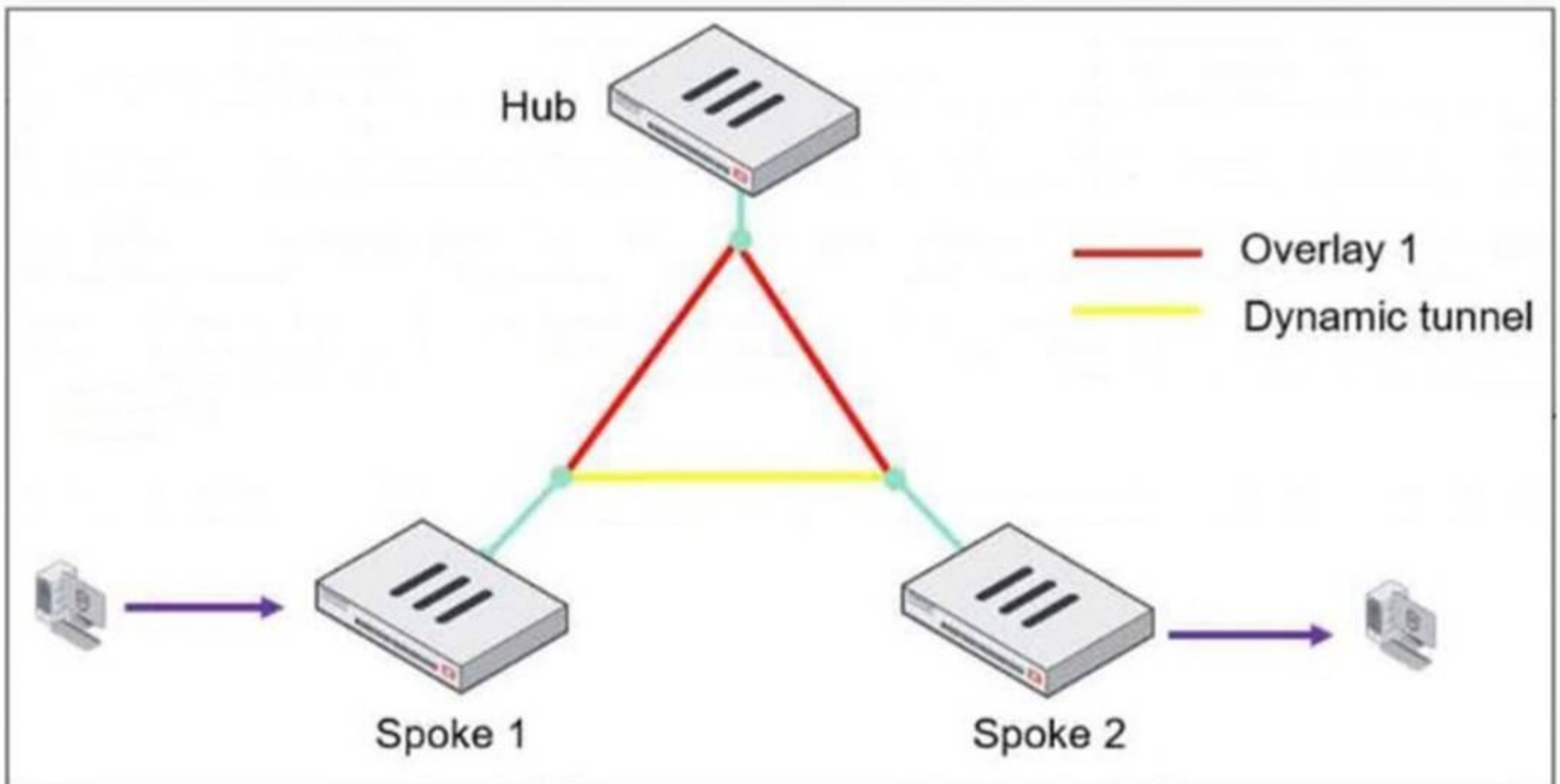
Which IPsec phase 2 configuration must an administrator make on the FortiGate hub to enable equal-cost multi-path (ECMP) routing when multiple remote sites connect with overlapping subnets?

- A. Set route-overlap to either use-new or use-old
- B. Set net-device to ecmp
- C. Set single-source to enable
- D. Set route-overlap to allow

Answer: A

NEW QUESTION 17

Refer to the exhibit, which shows an ADVPN network.



The client behind Spoke-1 generates traffic to the device located behind Spoke-2. What is the first message that the hub sends to Spoke-1 to bring up the dynamic tunnel?

- A. Shortcut query
- B. Shortcut offer
- C. Shortcut reply
- D. Shortcut forward

Answer: B

NEW QUESTION 20

.....

Thank You for Trying Our Product

We offer two products:

1st - We have Practice Tests Software with Actual Exam Questions

2nd - Questions and Answers in PDF Format

FCSS_EFW_AD-7.6 Practice Exam Features:

- * FCSS_EFW_AD-7.6 Questions and Answers Updated Frequently
- * FCSS_EFW_AD-7.6 Practice Questions Verified by Expert Senior Certified Staff
- * FCSS_EFW_AD-7.6 Most Realistic Questions that Guarantee you a Pass on Your FirstTry
- * FCSS_EFW_AD-7.6 Practice Test Questions in Multiple Choice Formats and Updatesfor 1 Year

100% Actual & Verified — Instant Download, Please Click
[Order The FCSS_EFW_AD-7.6 Practice Test Here](#)