

## 300-615 Dumps

# Troubleshooting Cisco Data Center Infrastructure (DCIT)

<https://www.certleader.com/300-615-dumps.html>



**NEW QUESTION 1**

```
Debug messages from Router-A
OSPF: Rcv DBD from 10.100.1.2 on GigabitEthernet0/1 seq 0x2124 opt 0x52 flag 0x2
      len 1452 mtu 2000 state EXSTART
OSPF: Nbr 10.100.1.2 has larger interface MTU
SPF: Send DBD to 10.100.1.2 on GigabitEthernet0/1 seq 0x9E6 opt 0x52 flag 0x7
      len 32
OSPF: Retransmitting DBD to 10.100.1.2 on GigabitEthernet0/1 [10]
OSPF: Send DBD to 10.100.1.2 on GigabitEthernet0/1 seq 0x9E6 opt 0x52 flag 0x7
      len 32
OSPF Retransmitting DBD to 10.100.1.2 on GigabitEthernet0/1[11]
%OSPF-5-ADJCHG: Process 1, Nbr 10.100.1.2 on GigabitEthernet0/1 from EXSTART to
      DOWN, Neighbor Down: Too many retransmissions

Debug messages from Router-B
OSPF: Rev DBD from 10.100.100.1 on GigabitEthernet0/1 seq 0x89E opt 0x52 flag 0x7
      len 32 mtu 1600 state EXCHANGE
OSPF: Nbr 10.100.100.1 has smaller interface MTU
```

Refer to the exhibit. An OSPF adjacency between Router-A and Router-B cannot reach the FULL state. Which action resolves the issue?

- A. Adjust the MTU on Router-A to 1600.
- B. Disable the check of the MTU value.
- C. Set the OSPF media type to point-to-point.
- D. Adjust the MTU on Router-B to 1604.

**Answer: B**

**NEW QUESTION 2**

The Cisco Nexus switch is connected to a peer switch that is not running Cisco NX-OS. The switches are connected using port channel and are experiencing packet loss. Which action should be performed on the Cisco Nexus switch ports to resolve this issue?

- A. Turn on lacp suspend-individual.
- B. Turn on lacp graceful-convergence.
- C. Turn off lacp graceful-convergence.
- D. Turn off lacp suspend-individual.

**Answer: C**

**NEW QUESTION 3**

Refer to the exhibit. The HSRP configuration in the exhibit fails to function. Which action resolves this issue?

- A. Enable IP redirects.
- B. Set the MTU to 1500 bytes.
- C. Configure HSRP version 2.
- D. Configure the same HSRP group on both devices.

**Answer: A**

**NEW QUESTION 4**

```
switch1# show vpc brief
Legend:
(*) - local vPC is down, forwarding via vPC peer-link

vPC domain id : 500
Peer status : peer link is down
vPC keep-alive status : Suspended (Destination IP not reachable)
Configuration consistency status : success
vPC role : secondary, operational primary
Number of vPCs configured : 4
Peer Gateway : Disabled
Dual-active exluded VLANs : -

vPC Peer-link status
-----
id  Port  Status  Active  vlans
---  ----  -
1  Po500  down  -

switch2# show vpc brief
Legend:
(*) - local vPC is down, forwarding via vPC peer-link

vPC domain id : 20
Peer status : peer link is down
vPC keep-alive status : Suspended (Destination IP not reachable)
Configuration consistency status : success
vPC role : secondary, operational primary
Number of vPCs configured : 4
Peer Gateway : Disabled
Dual-active exluded VLANs : -

vPC Peer-link status
-----
id  Port  Status  Active  vlans
---  ----  -
1  Po500  down  -
```

Refer to the exhibit. vPC between switch1 and switch2 is not working. Which two actions are needed to fix the problem? (Choose two.)

- A. Match vPC domain ID between the two devices.
- B. Configure IP address on the interface.
- C. Activate VLANs on the vPC.
- D. Configure vPC peer link and vPC peer keepalive correctly.
- E. Configure one of the switches as primary for the vPC.

**Answer:** AC

#### NEW QUESTION 5

An engineer is troubleshooting a packet flow from an access leaf to spine. Which EVPN routes are expected on this connection?

- A. EVPN Type 1-5
- B. EVPN Type 0,9,15
- C. EVPN Type 9-15
- D. EVPN Type 0,16

**Answer:** A

#### NEW QUESTION 6

```
switch# show interface fc1/5
fc1/5 is down (NPV upstream port not available)
Hardware is Fibre Channel, SFP is short wave laser w/o OFC (SN)
Port WWN is 20:47:00:0d:ac:a4:3b:83
Admin port mode is F, turnk mode is off
snmp link state traps are enabled
Port vsan is 100
Receive data field Size is 2112
```

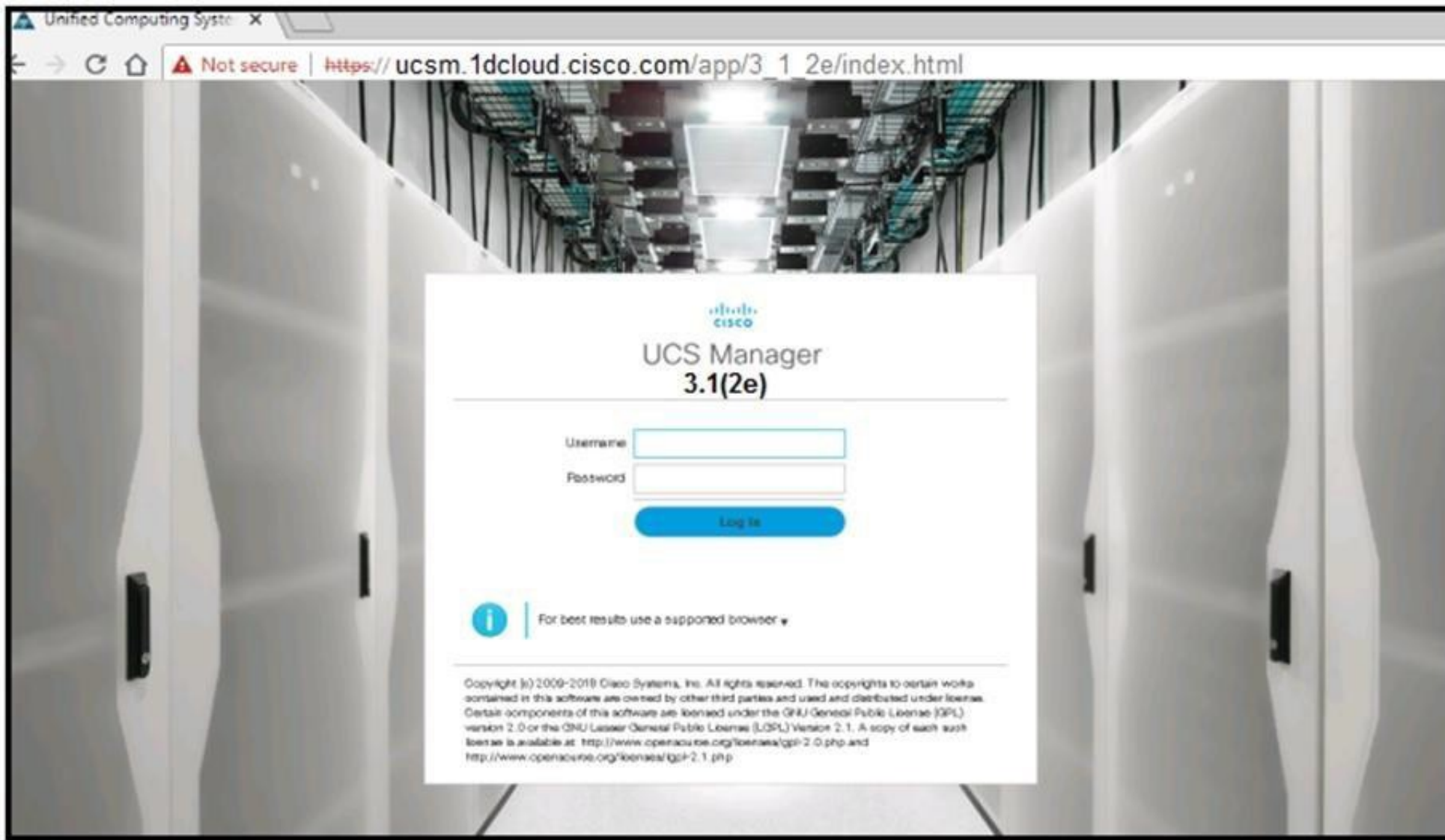
Refer to the exhibit. Interface fc1/5 is offline. Which action should be taken to troubleshoot the issue?



- A. Activate the correct zoneset for VSAN 100.
- B. Update the FLOGI database to contain the FLOGI entries for interface fc1/5 in VSAN 100.
- C. Update the FCNs database to contain names for VSAN 100.
- D. Configure the upstream ports and the server ports to be in VSAN 100.

**Answer: D**

#### NEW QUESTION 7



Refer to the exhibit. A web browser displays a “not secure” warning message when accessing the web interface of Cisco UCS Manager. Which action resolves the issue?

- A. Load third-party certificate to UCS Manager.
- B. Use the correct TCP port for HTTPS.
- C. Use a supported web browser.
- D. Use a supported version of UCS Manager.

**Answer: A**

#### NEW QUESTION 8

An engineer attempts to register Cisco UCS Manager to Cisco UCS Central, but the registration fails. The engineer can ping Cisco UCS Central from UCS Manager. Which two actions must the engineer attempt to resolve the problem? (Choose two.)

- A. Synchronize the date and time to NTP for Cisco UCS Central and the Cisco UCS domains.
- B. Apply the UCS Central license to UCS Central.
- C. Place Cisco UCS Manager on the same subnet as Cisco UCS Central.
- D. Allow port 443 between Cisco UCS Manager and Cisco UCS Central.
- E. Allow port 9443 between Cisco UCS Manager and Cisco UCS Central.

**Answer: AD**

#### NEW QUESTION 9

You have an ACI environment with three APICs, two spine switches, and four-leaf switches. You wipe and reboot all APICs first then leaf and spine switches one-by-one and successfully go through the Initial Setuo dialogue on the APIC 1 CIMC KVM console. When you log in to the APIC1 WebGUI, you notice that you do not see any directly connected leaf switches being discovered under Fabric > Inventory > Fabric Membership. What is the cause of the issue?

- A. The leaf nodes were not erased properly, which caused a fabric parameters mismatch with the APIC1.
- B. Rebooting the APICs and the leaf and spine switches after wiping them is not required.
- C. You forgot to enter the TEP Pool value during the Initial Setup dialogue on APIC1.
- D. The same Fabric Name value should be used before after wiping all devices.

**Answer: C**

#### NEW QUESTION 10

DRAG DROP

Drag and drop the Cisco UCS SNMP fault types from the left onto the correct issues on the right.

Select and Place:

connectivity	A server discovery fails.
environment	An adapter is unreachable.
operational	A voltage issue is detected.
server	A service profile is unable to associate.

- A. Mastered  
B. Not Mastered

Answer: A

Explanation:

connectivity	operational
environment	connectivity
operational	environment
server	server

**NEW QUESTION 10**  
Cisco Unified Computing System Manager raises a critical error message that indicates that the system has overlapping Ethernet and FCoE VLANs. All of the Ethernet traffic on the overlapping VLANs drops. Which action resolves the issue?

- A. Modify the VLAN assignment to vNICs.  
B. Change the PIN groups on the vHBAs.  
C. Modify the FCoE VLAN.  
D. Set the FCoE VLAN as the native VLAN on server uplinks.

Answer: A

**NEW QUESTION 11**  
DRAG DROP  
Drag and drop the actions from the left onto the faults that they resolve on the right. Not all options are used.  
Select and Place:

Add a block of WWNs.

Add a block of suffixes.

Reacknowledge the server.

Add a block of Layer 2 addresses.

Add a block of Layer 3 addresses.

Add a block of ext-mgmt addresses.

fitComputePoolEmpty

fitFcpoolInitiatorsEmpty

fitpoolPoolEmpty

fitMacpoolPoolEmpty

fitUuidpoolPoolEmpty

- A. Mastered  
B. Not Mastered

**Answer:** A

**Explanation:**

Add a block of WWNs.

Add a block of suffixes.

Reacknowledge the server.

Add a block of Layer 2 addresses.

Add a block of Layer 3 addresses.

Add a block of ext-mgmt addresses.

Reacknowledge the server.

Add a block of WWNs.

Add a block of Layer 3 addresses.

Add a block of Layer 2 addresses.

Add a block of suffixes.

**NEW QUESTION 14**

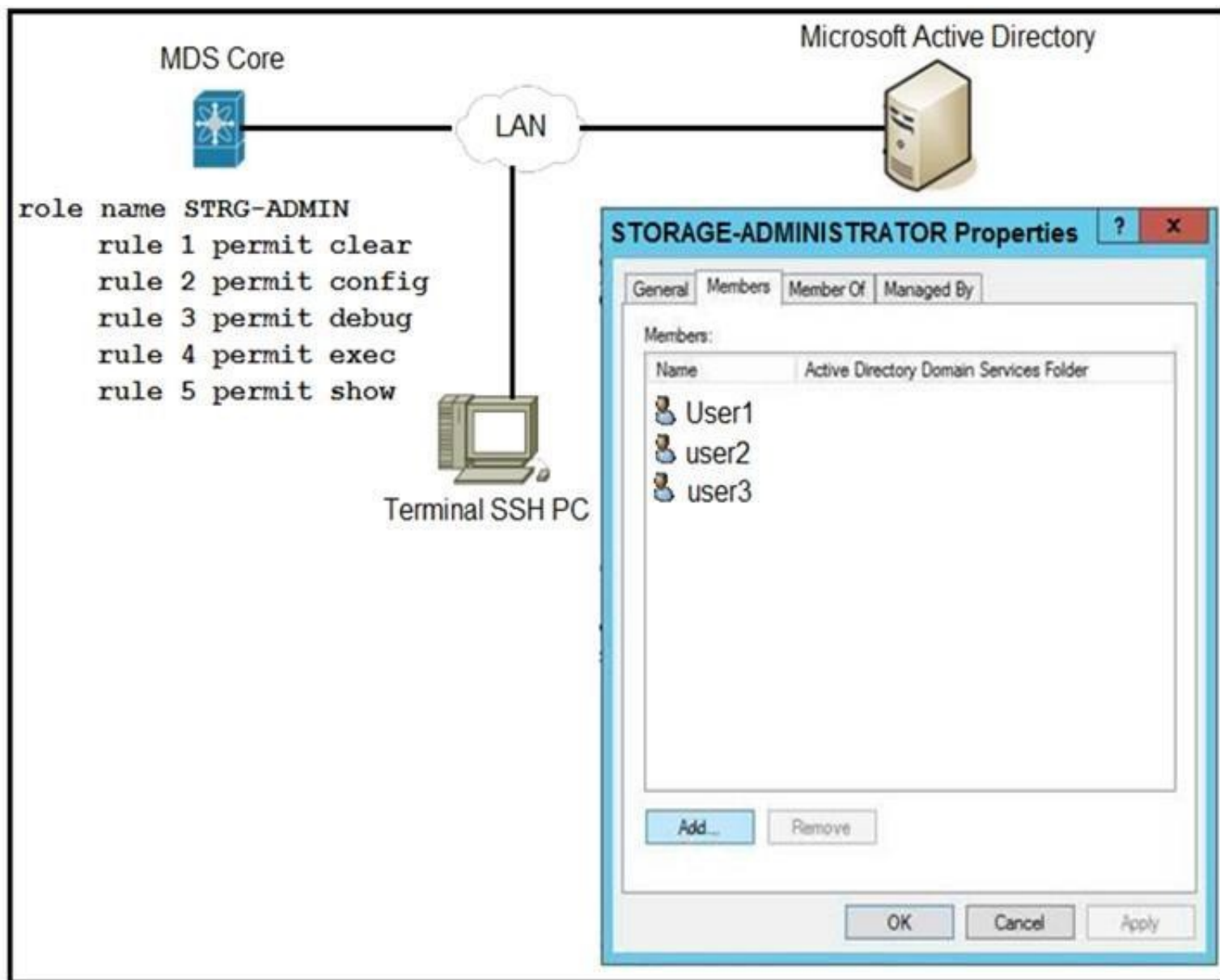
An engineer is implementing a storage VDC, but fails. Which two prerequisites must be in place before a storage VDC is implemented? (Choose two.)

- A. M-Series module  
B. ESSENTIALS license  
C. STORAGE-ENT license  
D. FCoE license  
E. F-Series module

**Answer:** DE

**NEW QUESTION 16**





Refer to the exhibit. An engineer is troubleshooting why user1, user2, and user3 from group STORAGE-ADMINISTRATOR in Microsoft Active Directory cannot log in to the Cisco MDS SSH CLI. Which action resolves the issue?

- A. Configure the role name to match the group name on Microsoft Active Directory.
- B. Include specific users into MDS role configuration.
- C. Configure SSH logins on Cisco MDS switch.
- D. Integrate Cisco MDS with Microsoft Active Directory.

**Answer:** A

#### NEW QUESTION 20

A Fibre Channel interface on a Cisco Nexus 5000 Series Switch receives bit errors, and the switch disables the interface. A temporary workaround must be implemented before the root cause is identified. Which action does an engineer take to prevent this issue from reoccurring?

- A. Verify that the SFPs are supported.
- B. Change the SFP to operate at 4 Gbps instead of 2 Gbps.
- C. Run the shutdown and then no shutdown command on the interface.
- D. Run the switchport ignore bit-errors command on the interface.

**Answer:** D

#### NEW QUESTION 22

A fabric interconnect fails to start and the console displays the loader prompt. Which two actions resolve the issue? (Choose two.)

- A. Load an uncorrupt bootloader image.
- B. Load an uncorrupt kickstart image.
- C. Reconnect L1/L2 cables between the Fis.
- D. Reformat the fabric interconnect.
- E. Load the correct version of the boot image.

**Answer:** BE

#### NEW QUESTION 27

```

event manager applet config_monitor
event cli match "conf t"
action 1.0 snmp-trap strdata "User has entered into configuration mode"
  
```

Refer to the exhibit. The EEM script fails to send an SNMP trap when a user attempts to enter configuration mode. Which configuration is missing from the script?

- A. event statement
- B. event-default action statement
- C. policy-default action statement
- D. IP address of the SNMP server

**Answer: D**

#### NEW QUESTION 29

```
serverteam Cleartext-Password := "<password>"  
  
Cisco-avpair = "shell:domains = user/admin/,common//read-  
all(16000) "
```

Refer to the exhibit. An engineer is investigating a role mapping issue on a switch. The users report that they cannot view the IP addresses under the tenant "corp". Which action resolves the issue?

- A. Add the users to the RADIUS server.
- B. Update the UNIX ID.
- C. Configure the correct secret password between the APIC and the RADIUS server.
- D. Add the updated avpair to include/corp/admin/

**Answer: C**

#### NEW QUESTION 34

Refer to the exhibit. A network engineer configures an EEM script to get a syslog notification after a configuration change. This message appears when the engineer must make a new configuration to this switch. Which configuration did the engineer neglect to apply in the script for it to function properly?

- A. event cli match 'configure terminal'
- B. event policy-default count 1 time 100
- C. event syslog occurs 10
- D. action 2.0 event-default

**Answer: D**

#### NEW QUESTION 35

```
event manager applet looback_online override -BootupPortLoopback  
  action 1 syslog priority notifications msg "Switch Online"  
  action 2 policy-default
```

Refer to the exhibit. The EEM script overrides all events in the system policy. What should be added to the script to resolve the issue?

- A. event statement
- B. environment variable
- C. event-default action statement
- D. configure terminal action

**Answer: A**

#### NEW QUESTION 39

```
switch# guestshell resize cpu 4  
Note: System CPU share will be resized on Guest shell enable
```

Refer to the exhibit. After the configuration is performed, guestshell continues to use 2%CPU. Which action resolves the issue?

- A. Resync the database
- B. Recreate the guestshell
- C. Reboot the guestshell
- D. Reboot the switch

**Answer: C**

#### NEW QUESTION 44

A request to activate the port security database is rejected. Which action do you perform to investigate the cause of the issue?

- A. Enable the auto-learning feature.
- B. Use the force option to identify rejected devices.
- C. Find conflicting entries between the active and configuration databases.
- D. Verify that devices are fully attached to the active database.

**Answer: B**

#### NEW QUESTION 48

Your client reports that many flaps and server cluster disconnects occur in their data center. While troubleshooting the issue, you discover a network attack hitting their Cisco Nexus 7000 Series Switches and determine that the source IP addresses are spoofed. Which first-line security solution resolves this issue?

- A. Dynamic ARP Inspection
- B. Unicast RPF
- C. IP Source Guard



D. Storm Control

**Answer:** A

**NEW QUESTION 52**

An IOM fails during a firmware upgrade and is unresponsive. Which action recovers the module?

- A. Restore UCSM configuration from backup.
- B. Roll back to the previous firmware.
- C. Use AutoInstall to reinstall the firmware.
- D. From the peer IOM, reset the faulty module.

**Answer:** B

**NEW QUESTION 54**

.....

## Thank You for Trying Our Product

\* 100% Pass or Money Back

All our products come with a 90-day Money Back Guarantee.

\* One year free update

You can enjoy free update one year. 24x7 online support.

\* Trusted by Millions

We currently serve more than 30,000,000 customers.

\* Shop Securely

All transactions are protected by VeriSign!

**100% Pass Your 300-615 Exam with Our Prep Materials Via below:**

<https://www.certleader.com/300-615-dumps.html>