

Cisco

Exam Questions 400-007

Cisco Certified Design Expert (CCDE v3.0) Written Exam



NEW QUESTION 1

Which solution component helps to achieve comprehensive threat protection and compliance for migration to multicloud SDX architectures?

- A. system-oriented architecture
- B. OSASE architecture
- C. platform-oriented architecture
- D. SASE architecture

Answer: D

NEW QUESTION 2

When consumers that leverage IaaS reach 100% resource capacity, what can be used to redirect the overflow of traffic to the public cloud so there is no disruption to service?

- A. cloud policing
- B. cloud spill
- C. cloud bursting
- D. cloud shaping

Answer: C

NEW QUESTION 3

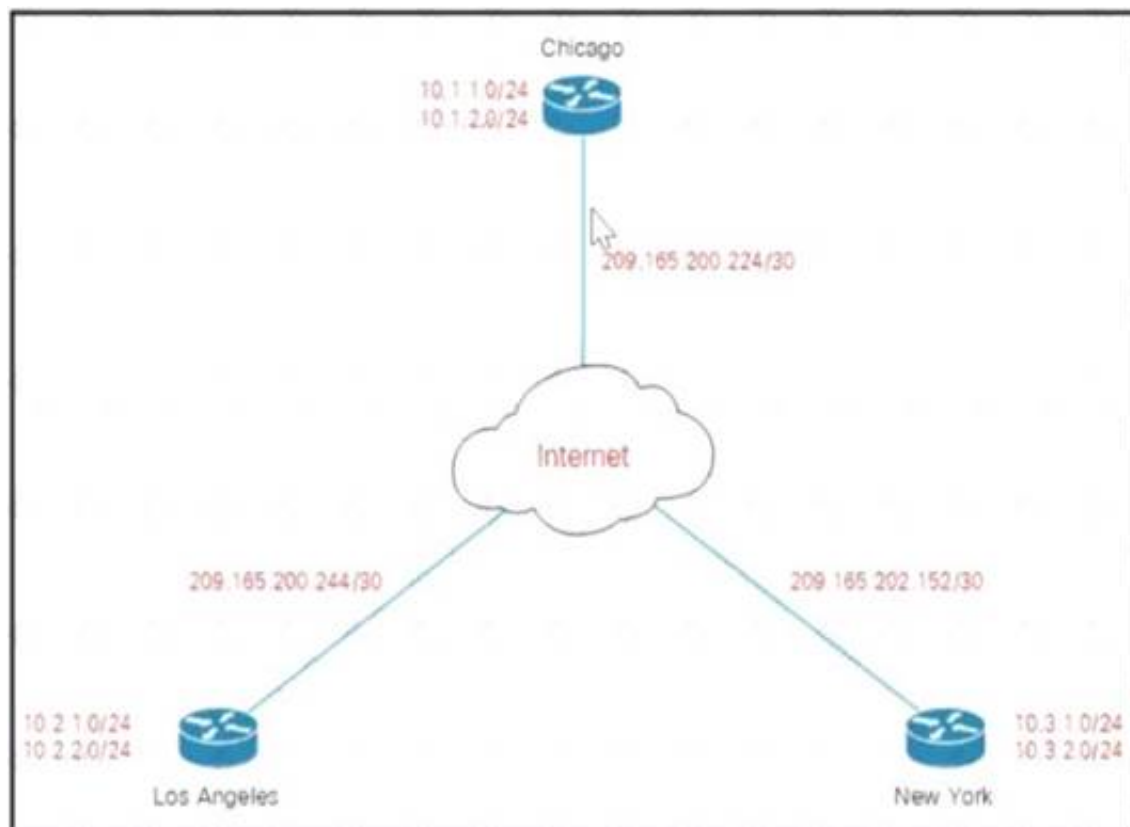
An enterprise solution team is performing an analysis of multilayer architecture and multicontroller SDN solutions for multisite deployments. The analysis focuses on the ability to run tasks on any controller via a standardized interface. Which requirement addresses this ability on a multicontroller platform?

- A. Deploy a root controller to gather a complete network-level view.
- B. Use the East-West API to facilitate replication between controllers within a cluster.
- C. Build direct physical connectivity between different controllers.
- D. Use OpenFlow to implement and adapt new protocols.

Answer: D

NEW QUESTION 4

Refer to the exhibit.



Company XYZ must design a DMVPN tunnel between the three sites. Chicago is going to act as the NHRP and the company wants DMVPN to detect peer endpoint failures. Which technology should be used in the design?

- A. VPLS
- B. IP SLA
- C. GRE
- D. L2TPv3

Answer: B

NEW QUESTION 5

A legacy enterprise is using a Service Provider MPLS network to connect its head office and branches. Recently, they added a new branch to their network. Due to physical security concerns, they want to extend their existing IP CCTV network of the head office to the new branch, without any routing changes in the network. They are also under some time constraints. What is the best approach to extend the existing IP CCTV network to the new branch, without incurring any IP address changes?

- A. GRE
- B. L2TPv3
- C. VXLAN

D. EoMPLS

Answer: B

NEW QUESTION 6

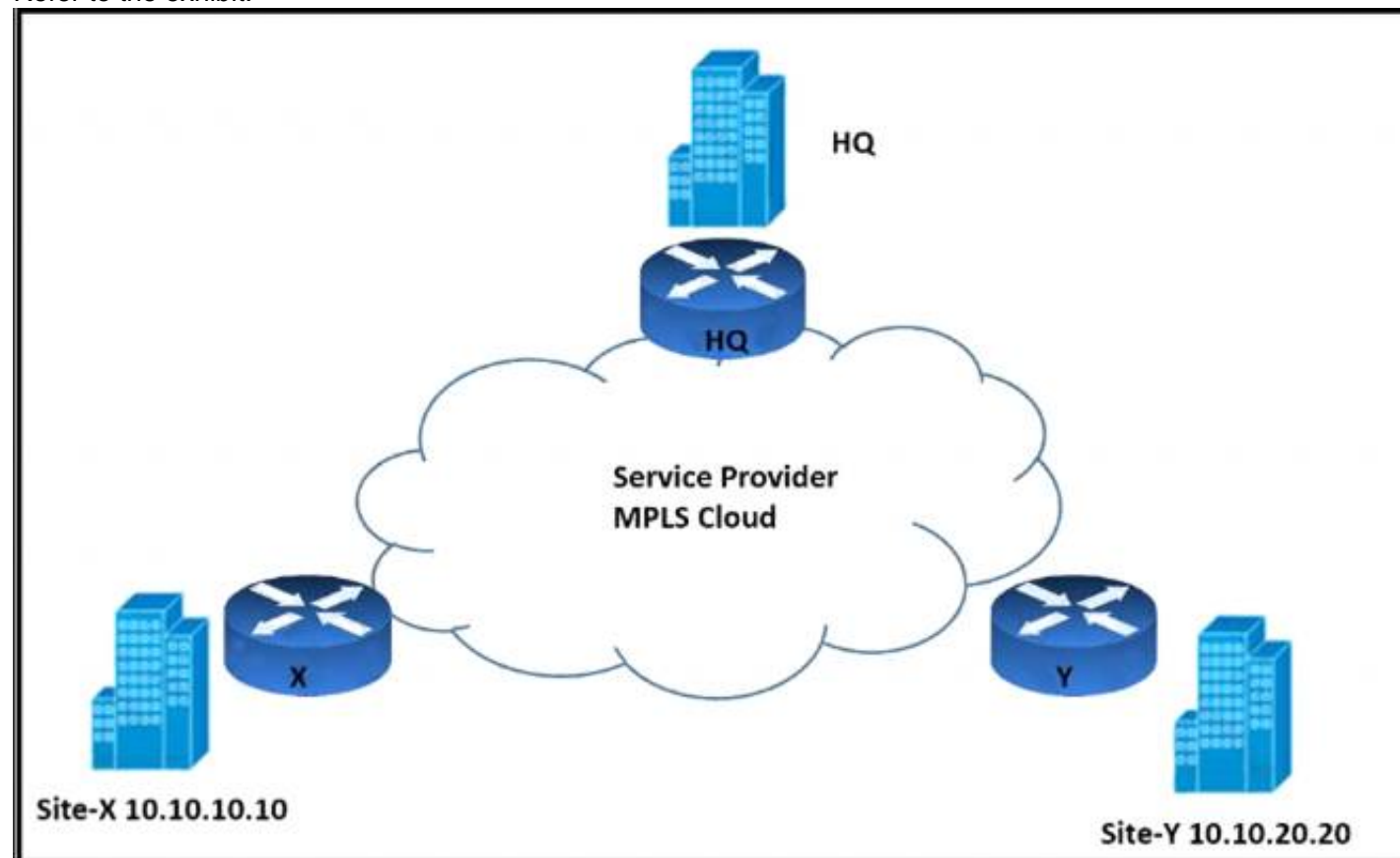
You have been tasked with designing a data center interconnect to provide business continuity. You want to encrypt the traffic over the DCI using IEEE 802.1AE MACsec to prevent the deployment of any firewall or IPS. Which two interconnect technologies support MACsec? (Choose two.)

- A. EoMPLS
- B. MPLS Layer 3 VPN
- C. DMVPN
- D. GET VPN
- E. KVPLS

Answer: AE

NEW QUESTION 7

Refer to the exhibit.



An architect must design an enterprise WAN that connects the headquarters with 22 branch offices. The number of remote sites is expected to triple in the next three years. The final solution must comply with these requirements:

- > Only the loopback address of each of the enterprise CE X and Y routers must be advertised to the interconnecting service provider cloud network.
- > The transport layer must carry the VPNv4 label and VPN payload over the MP-BGP control plane.
- > The transport layer must not be under service provider control.

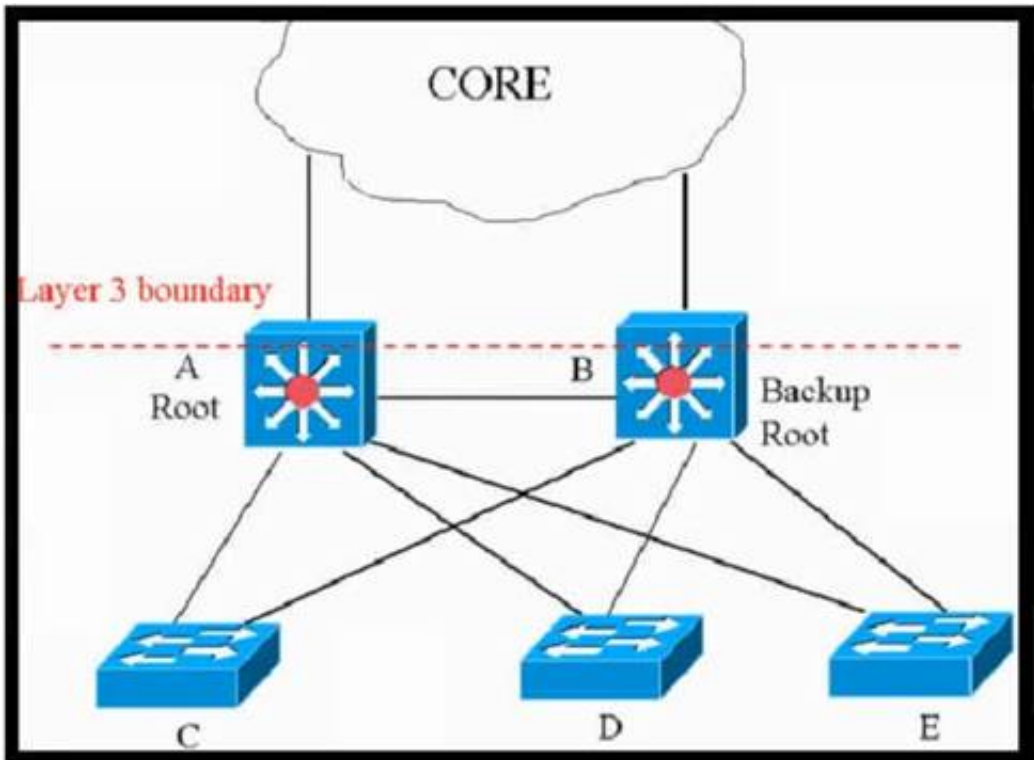
Which enterprise WAN transport virtualization technique meets the requirements?

- A. EIGRP Over the Top
- B. MPLS over BGP over multipoint GRE
- C. DMVPN per VRF
- D. point-to-point GRE per VRF

Answer: B

NEW QUESTION 8

Refer to the exhibit.



This network is running legacy STP 802.1 d. Assuming "hello_timer" is fixed to 2 seconds, which parameters can be modified to speed up convergence times after single link/node failure?

- A. The transit_delay=5 and dpdu_delay=20 are recommended values, considering helto_timer=2 and specified
- B. Only the maximum_transmission_halt_delay and diameter parameters are configurable parameters in 802. to speed up STP convergence process
- C. The max_age and forward delay parameters can be adjusted to speed up STP convergence process.
- D. Only the transit_delay and bpdu_delay timers are configurable parameters in 802.1d to speed up STP convergence process.

Answer: C

NEW QUESTION 9

Drag and drop the end-to-end network virtualization elements from the left onto the correct network areas on the right.

Network Functions Virtualization (NFV)	Edge Control
IP Tunneling	option A
VRF	option B
MPLS + MP-BGP	Transport Virtualization
VLAN	option A
Service Containers	option B
	Service Virtualization
	option A
	option B

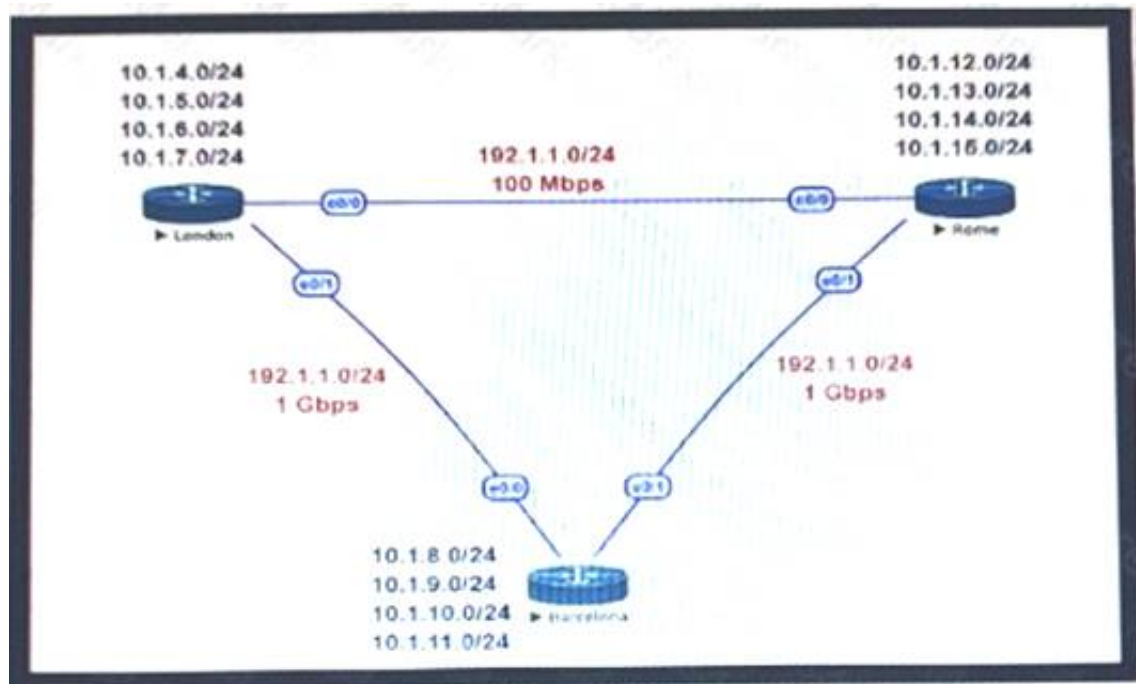
- A. Mastered
- B. Not Mastered

Answer: A

Explanation:
Graphical user interface Description automatically generated with medium confidence

NEW QUESTION 10

Refer to the exhibit.



This network is running OSPF as the routing protocol. The internal networks are being advertised in OSPF. London and Rome are using the direct link to reach each other although the transfer rates are better via Barcelona. Which OSPF design change allows OSPF to calculate the proper costs?

- A. Change the OSPF reference bandwidth to accommodate faster links.
- B. Filter the routes on the link between London and Rome
- C. Change the interface bandwidth on all the links.
- D. Implement OSPF summarisation to fix the issue

Answer: A

NEW QUESTION 10

A customer has a functional requirement that states HR systems within a data center should be segmented from other systems that reside in the same data center and same VLAN. The systems run legacy applications by using hard-coded IP addresses. Which segmentation method is suitable and scalable for the customer?

- A. data center perimeter firewalling
- B. VACLs on data center switches
- C. transparent firewalling
- D. routed firewalls

Answer: B

NEW QUESTION 13

Sometimes SDN leverages various overlay networking technologies to create layer(s) of network abstraction. What describes an overlay network?

- A. It transmits packets that traverse over network devices like switches and routers
- B. It encapsulates packets at source and destination, which incurs additional overhead
- C. Packet delivery and reliability occurs at Layer 3 and Layer 4
- D. It is responsible for the delivery of packets; NAT- or VRF-based segregation is required

Answer: B

NEW QUESTION 17

Which design consideration is valid when you contrast fabricPath and trill?

- A. FabricPath uses IS-IS, but TRILL uses VxLAN
- B. FabricPath permits active-active FHRP and TRILL support anycast gateway.
- C. FabricPath Permits ECMP, but TRILL does not
- D. FabricPath permits active-active mode, but TRILL supports only active-standby mode.

Answer: B

NEW QUESTION 21

What is a disadvantage of the traditional three-tier architecture model when east west traffic between different pods must go through the distribution and core layers?

- A. low bandwidth
- B. security
- C. scalability
- D. high latency

Answer: A

NEW QUESTION 26

Which architecture does not require an explicit multicast signaling protocol, such as PIM or P2MP, to signal the multicast state hop-by-hop, but instead uses a link state protocol to advertise the multicast forwarding state?

- A. Binary indexed explicit routing
- B. Binary intermediate enhanced routing

- C. Bit indexed explicit replication
- D. Bi-directional implicit replication

Answer: C

NEW QUESTION 28

Which technology supports antispoofing and does not have any impact on encryption performance regardless of packet size?

- A. MACsec
- B. IP source guard
- C. DHCP snooping with DAI
- D. IPsec

Answer: A

NEW QUESTION 29

Company XYZ uses an office model where the employees can use any open desk and plug their laptops in. They want to authenticate the end users using their domain username and password before allowing them access to the network. The design must also accommodate the ability of controlling traffic within the same group or subnet if a macro (or micro) segmentation-based model is adopted in the future. Which protocol can be recommended for this design to authenticate end users?

- A. LDAP
- B. EAP
- C. TACACS+
- D. RADIUS

Answer: D

Explanation:

<https://www.networkstraining.com/what-is-cisco-ise/>

NEW QUESTION 31

An architect receives a business requirement from a CTO that states the RTO and RPO for a new system should be as close as possible to zero. Which replication method and data center technology should be used?

- A. asynchronous replication over dual data centers via DWDM
- B. synchronous replication over geographically dispersed dual data centers via MPLS
- C. synchronous replication over dual data centers via Metro Ethernet
- D. asynchronous replication over geographically dispersed dual data centers via CWDM

Answer: B

Explanation:

RTO and RPO are measures of how quickly and accurately a system can be recovered after a disaster or failure. RTO refers to the amount of time it takes to restore a system to its normal operation after a failure, while RPO refers to the amount of data that can be lost as a result of a failure. In synchronous replication, data is written to both the primary and secondary systems at the same time. This ensures that the data on the secondary system is always up-to-date and ready for use in the event of a disaster or failure. Geographically dispersed dual data centers refer to two data centers that are located in different geographical locations, which can help to reduce the risk of a disaster or failure impacting both data centers at the same time.

NEW QUESTION 35

A Service Provider is designing a solution for a managed CE service to a number of local customers using a single CE platform and wants to have logical separation on the CE platform using Virtual Routing and Forwarding (VRF) based on IP address ranges or packet length. Which is the most scalable solution to provide this type of VRF Selection process on the CE edge device?

- A. Static Routes for Route Leaking
- B. Policy Based Routing
- C. OSPF per VRF Instance
- D. Multi-Protocol BGP

Answer: B

NEW QUESTION 40

Which two benefits can software-defined networks provide to businesses? (Choose two.)

- A. provides additional redundancy
- B. reduction of OpEx/CapEx
- C. reduced latency
- D. decentralized management
- E. enables innovation
- F. meets high traffic demands

Answer: BE

NEW QUESTION 44

Which two points must network designers consider when designing a new network design or when evaluating an existing network design to help them understand the high-level design direction with regards to the security aspects? (Choose two)

- A. Consider Business objectives and goals
- B. Consider organization's security policy standards
- C. Consider for only multi-site networks
- D. Consider for only new network technologies and components

Answer: AB

NEW QUESTION 48

Company ABC wants to minimize the risk of users plugging unauthorized switches and hubs into the network. Which two features can be used on the LAN access ports to support this design requirement? (Choose two.)

- A. Loop Guard
- B. PortFast
- C. DTF
- D. Root Guard
- E. BPDU Guard

Answer: BE

NEW QUESTION 49

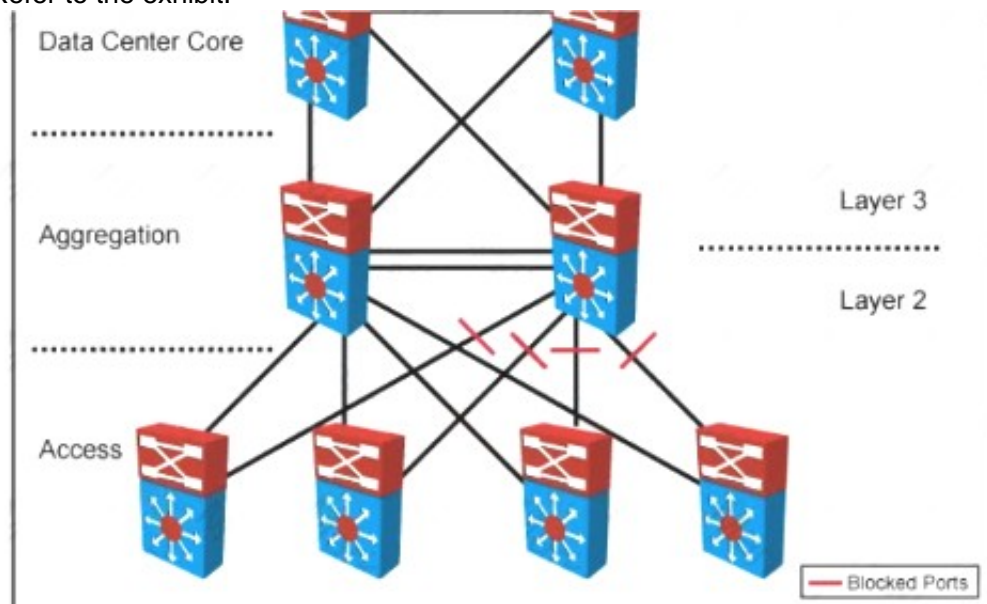
Which two features control multicast traffic in a VLAN environment? (Choose two.)

- A. IGMP snooping
- B. MLD snooping
- C. RGMP
- D. PIM snooping
- E. pruning

Answer: AB

NEW QUESTION 50

Refer to the exhibit.



Your company designed a network to allow server VLANs to span all access switches in a data center. In the design, Layer 3 VLAN interfaces and HSRP are configured on the aggregation switches. Which two features improve STP stability within the network design? (Choose two.)

- A. BPDU guard on access ports
- B. BPDU guard on the aggregation switch downlinks toward access switches
- C. root guard on the aggregation switch downlinks toward access switches
- D. root guard on access ports
- E. edge ports on access ports
- F. access switch pairs explicitly determined to be root and backup root bridges

Answer: AE

NEW QUESTION 51

You are designing the routing design for two merging companies that have overlapping IP address space. Which of these must you consider when developing the routing and NAT design?

- A. Local to global NAT translation is done after routing
- B. Global to local NAT translation is done before routing.
- C. Local to global NAT translation is done before policy-based routing
- D. Global to local NAT translation is done after policy-based routing.

Answer: B

NEW QUESTION 52

Company XYZ needs advice in redesigning their legacy Layer 2 infrastructure. Which technology should be included in the design to minimize or avoid convergence delays due to STP or FHRP and provide a loop-free topology?

- A. Use switch clustering in the access layer.

- B. Use switch clustering in the core/distribution layer.
- C. Use spanning-tree PortFast.
- D. Use BFD.

Answer: B

NEW QUESTION 57

Which two control plane policer designs must be considered to achieve high availability? (Choose two.)

- A. Control plane policers are enforced in hardware to protect the software path, but they are hardware platform dependent in terms of classification ability.
- B. Control plane policers are really needed only on externally facing devices.
- C. Control plane policers can cause the network management systems to create false alarms.
- D. Control plane policers must be processed before a forwarding decision is made.
- E. Control plane policers require that adequate protocols overhead are factored in to allow protocol convergence.

Answer: AD

NEW QUESTION 60

Drag and drop the design characteristics from the left onto the correct network filter techniques on the right. Not all options are used.

It is used to prevent spoofing attacks when there are alternate routes to a given IP address

It is used to check the existence of a route without regard to the incoming interface

It is a dynamic filter

It requires manual configuration

It is used as a filtering technique for Martian IP addresses

Ingress Access Lists

target 1

Strict Reverse Path Forwarding

target 2

Feasible Path Reverse Path Forwarding

target 3

Loose Reverse Path Forwarding

target 4

- A. Mastered
- B. Not Mastered

Answer: A

Explanation:

It is used to prevent spoofing attacks when there are alternate routes to a given IP address

It is used to check the existence of a route without regard to the incoming interface

It is a dynamic filter

It requires manual configuration

It is used as a filtering technique for Martian IP addresses

Ingress Access Lists

It requires manual configuration

Strict Reverse Path Forwarding

It is a dynamic filter

Feasible Path Reverse Path Forwarding

It is used to prevent spoofing attacks when there are alternate routes to a given IP address

Loose Reverse Path Forwarding

It is used as a filtering technique for Martian IP addresses

NEW QUESTION 63

A customer asks you to perform a high level review of their upcoming WAN refresh for remote sites The review is specially focused on their retail store operations consisting of 500+ locations connected via mutlipoint IPsec VPN solution. Which routing protocol would be valid but would also be the most restrictive for the expansion of this deployment model?

- A. EIGRP
- B. IS-IS

Passing Certification Exams Made Easy

visit - <https://www.surepassexam.com>

- C. OSPF
- D. BGP

Answer: B

NEW QUESTION 65

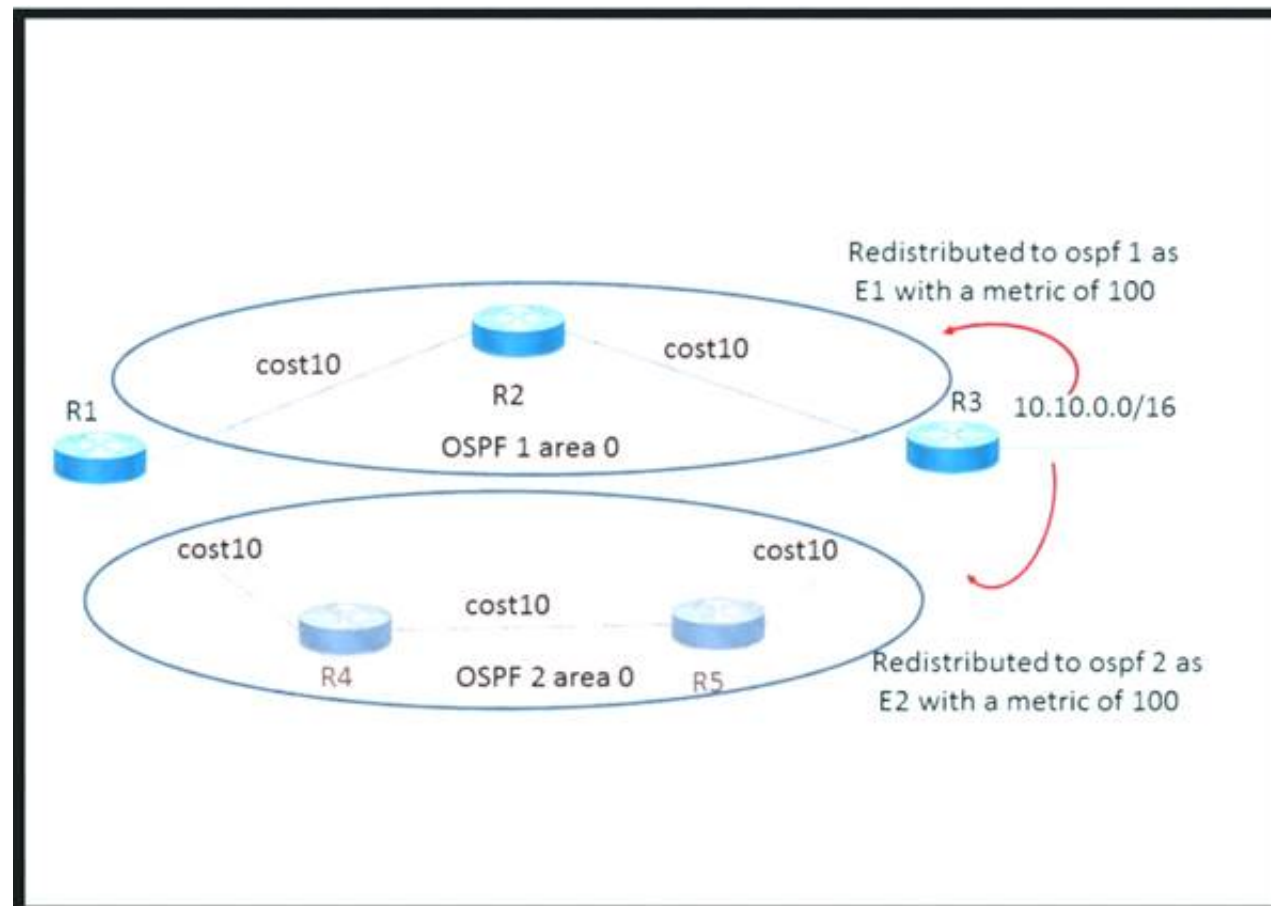
The administrator of a small branch office wants to implement the Layer 2 network without running STP. The office has some redundant paths. Which mechanism can the administrator use to allow redundancy without creating Layer 2 loops?

- A. Use double-sided VPC on both switches
- B. Use two port channels as Flex links
- C. Use fabric path with ECMP
- D. Use 802.3ad link bundling.

Answer: B

NEW QUESTION 70

Refer to the exhibit.



The network 10.10.0.0/16 has been redistributed to OSPF processes and the best path to the destination from R1 has been chosen as R1-R2-R3. A failure occurred on the link between R2 and R3, and the path was changed to R1-R4-R5-R3. What happens when the link between R2 and R3 is restored?

- A. The path R1-R4-R5-R3 continues to be the best path because the metric is better
- B. The path reverts back to R1-R2-R3 because the route type is E1
- C. The path R1-R4-R5-R3 continues to be the best path because OSPF does not compare the metrics between two domains
- D. The path reverts to R1-R2-R3 because this was the previous best path

Answer: D

Explanation:

When the link between R2 and R3 is restored, the path reverts back to R1-R2-R3 because this was the previous best path. This is because OSPF uses the Dijkstra algorithm to calculate the shortest path tree (SPT) and the path with the lowest cost is chosen as the best path. In this case, the cost of the path R1-R2-R3 is lower than the cost of the path R1-R4-R5-R3, so the path R1-R2-R3 is chosen as the best path. OSPF also has a preference order for different types of routes, such as intra-area, inter-area, external type 1, external type 2, NSSA type 1, and NSSA type 2. However, this preference order only applies when OSPF has to choose between routes of different types to the same destination. In this scenario, both paths are external type 2 routes, so the preference order does not affect the path selection.

NEW QUESTION 74

You are designing the QoS policy for a company that is running many TCP-based applications. The company is experiencing tail drops for these applications. The company wants to use a congestion avoidance technique for these applications. Which QoS strategy can be used to fulfill the requirement?

- A. weighted fair queuing
- B. weighted random early detection
- C. low-latency queuing
- D. first-in first-out

Answer: B

NEW QUESTION 77

A business wants to centralize services via VDI technology and to replace remote WAN desktop PCs with thin client-type machines to reduce operating costs. Which consideration supports the new business requirement?

- A. VDI servers should be contained centrally within a DMZ

- B. The thin client traffic should be placed in a WAN QoS priority queue
- C. VDI servers should be contained within dedicated VLANs in each branch location
- D. The WAN should offer low latency and be resized

Answer: D

NEW QUESTION 81

Drag and drop the FCAPS network management reference models from the left onto the correct definitions on the right.

Fault Management	ensures that network transit quality remains at acceptable levels
Configuration Management	gathers usage statistics for users and business units
Accounting Management	gathers and stores configuration code from network devices
Performance Management	recognizes, isolates, corrects, and logs events that occur in the network
Security Management	controls access to assets in the network

- A. Mastered
- B. Not Mastered

Answer: A

Explanation:

Fault Management	= Recognize, isolates, corrects, and logs events that occur in the network
Configuration Management	= Gathers and stores configuration code from network devices
Performance Management	= ensures that network transit quality remains at acceptable laevels
Security Management	= Controls access to assets in the network
Accounting Management	= gathers usage statistics for users and business units

NEW QUESTION 83

Company XYZ is designing the IS-IS deployment strategy for their multiarea IS-IS domain. They want IS-IS neighbour relationships to be minimized on each network segment and want to optimize the size of the IS-IS LSDB on each router. Which can design can be used to meet these requirements?

- A. Design all routers as Level 2 router
- B. Set the links between the routers as Level 1 with the area
- C. Design the network so that the routers connecting to other areas are Level 2 routers and internal routers are Level 1
- D. Design the network so that all routers are Level 1 routers
- E. Design the network so that the routers connecting to other areas are Level 1/Level 2 routers and internal routers are Level 1

Answer: D

NEW QUESTION 86

What is the most important operational driver when building a resilient and secure modular network design?

- A. Reduce the frequency of failures requiring human intervention
- B. Minimize app downtime
- C. Increase time spent on developing new features
- D. Dependencies on hardware or software that is difficult to scale

Answer: A

NEW QUESTION 90

What are two examples of business goals to be considered when a network design is built? (Choose two.)

- A. standardize resiliency
- B. minimize operational costs
- C. integrate endpoint posture
- D. ensure faster obsolescence
- E. reduce complexity

Answer: BE

NEW QUESTION 92

An enterprise has identified these causes for inefficient CAPEX spending:

- CAPEX planning is driven by technology and not by business objectives.
- The CAPEX planning team lacks the data it needs to perform due diligence tasks.
- The organizational structure lacks sufficient accountability and incentives.

Which corporate cultural change contributes to improving the effectiveness of CAPEX spending?

- A. Build a financial control function that delivers high-quality reports on operational expenses for business insight and financial reporting.
- B. CxO-level staff must have a full technical understanding but they should not trust their technical leaders fully.
- C. Adopt new organizational models that promote real accountability for RO
- D. not just revenue
- E. EBITDA, and cash.
- F. Marketing and product management divisions must reduce their CAPEX budgets significantly to drive the change.

Answer: C

NEW QUESTION 95

You have been asked to design a high-density wireless network for a university campus. Which two principles would you apply in order to maximize the wireless network capacity? (Choose two.)

- A. Implement a four-channel design on 2.4 GHz to increase the number of available channels
- B. Choose a high minimum data rate to reduce the duty cycle.
- C. increases the number of SSIDs to load-balance the client traffic.
- D. Make use of the 5-GHz band to reduce the spectrum utilization on 2.4 GHz when dual-band clients are used.
- E. Enable 802.11n channel bonding on both 2.4 GHz and 5 GHz to increase the maximum aggregated cell throughput.

Answer: BD

NEW QUESTION 97

Which two actions ensure voice quality in a branch location with a low-speed, high-latency WAN connection? (Choose two.)

- A. Increase WAN bandwidth
- B. Increase memory branch switch.
- C. Fragment data packets.
- D. Replace any electrical links with optical links
- E. Prioritize voice packets

Answer: CE

NEW QUESTION 101

A healthcare provider discovers that protected health information of patients was altered without patient consent. The healthcare provider is subject to HIPAA compliance and is required to protect PHI data. Which type of security safeguard should be implemented to resolve this issue?

- A. technical and physical access control
- B. administrative security management processes
- C. physical device and media control
- D. technical integrity and transmission security

Answer: D

Explanation:

https://www.cisco.com/en/US/docs/solutions/Enterprise/Compliance/HIPAA/HIP_AppC.html#wp1085353

NEW QUESTION 103

Which parameter is the most important factor to consider when deciding service placement in a cloud solution?

- A. data replication cost
- B. application structure
- C. security framework Implementation time
- D. data confidentiality rules

Answer: D

NEW QUESTION 108

Company XYZ is running SNMPv1 in their network and understands that it has some flaws. They want to change the security design to implement SNMPv3 in the network. Which network threat is SNMPv3 effective against?

- A. man-in-the-middle attack
- B. masquerade threats
- C. DDoS attack
- D. brute force dictionary attack

Answer: D

NEW QUESTION 111

Refer to the exhibit.

	Equipment Cost	ISP Cost	Licenses Cost
SD-WAN over L3VPN	\$\$	\$\$	\$\$\$
SD-WAN over L2VPN	\$\$	\$	\$\$\$
Managed SD-WAN	\$	\$\$\$	-
DMVPN over L3VPN	\$\$	\$\$	\$

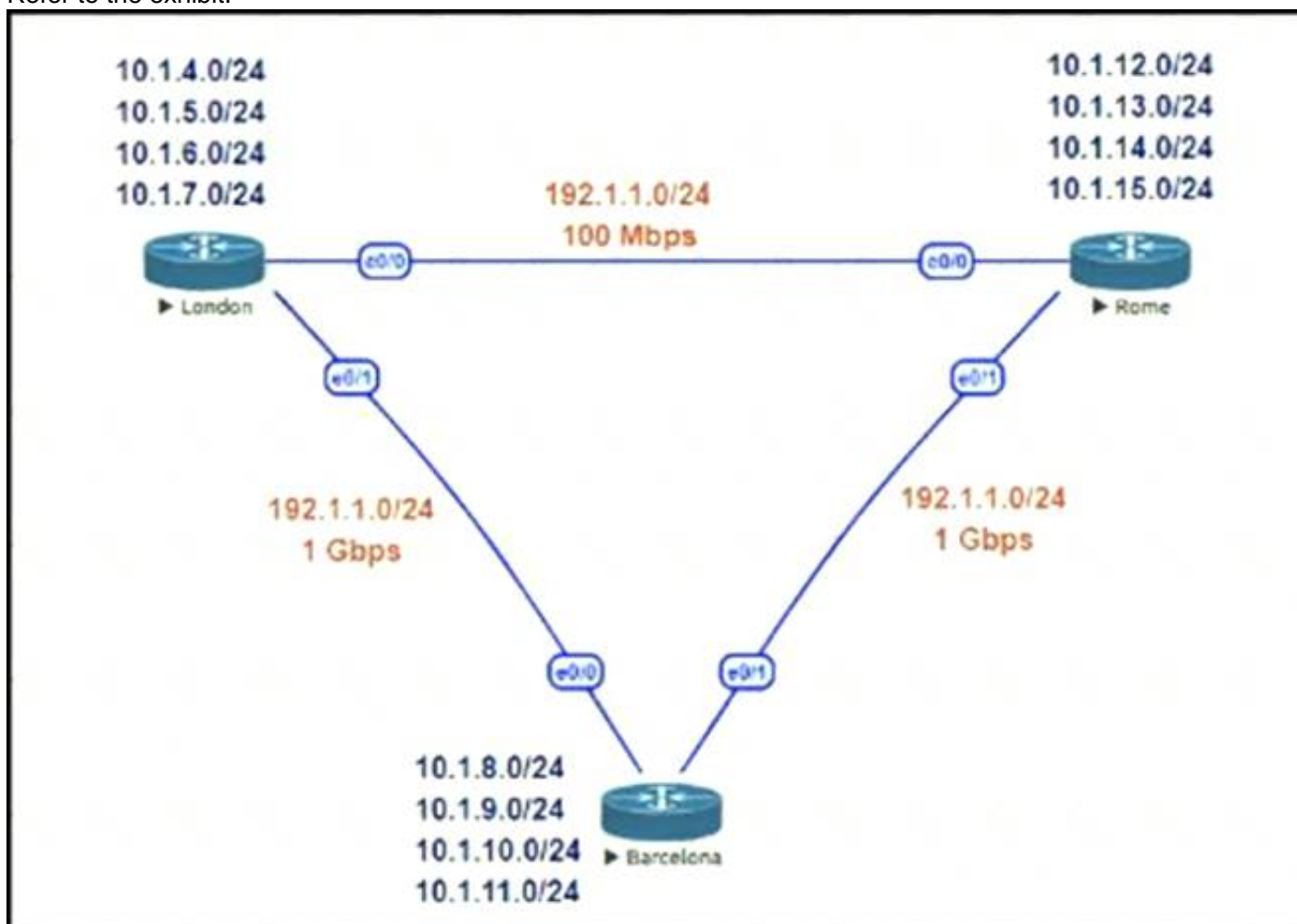
The WAN network of the General Bank of Greece has experienced several outages. It takes too long to activate a new branch site. The networking department of the bank plans to upgrade the legacy end-of-life WAN network with a new flexible, manageable, and scalable in-house solution. The number of branches will increase exponentially in the next fiscal year. The CTO states that the bank's main goal is OPEX reduction. The network engineering team prepares a table to evaluate the available options. Which WAN technology can be used for the solution?

- A. DMVPN over L3VPN
- B. Managed SD-WAN
- C. SD-WAN over L3VPN
- D. SD-WAN over L2VPN

Answer: B

NEW QUESTION 114

Refer to the exhibit.



This network is running EIGRP as the routing protocol and the internal networks are being advertised in EIGRP. Based on the link speeds, all traffic between London and Rome is getting propagated via Barcelona and the direct link between London and Rome is not being utilized under normal working circumstances. The EIGRP design should allow for efficiency in the routing table by minimizing the routes being exchanged. The link between London and Rome should be utilized for specific routes. Which two steps accomplish this task? (Choose two.)

- A. Configure EIGRP route summarization on all the interfaces to summarize the internal LAN routes
- B. Filter the routes on the link between London and Barcelona
- C. Filter the routes on the link between London and Rome
- D. Configure route leaking of summary routes on the link between London and Rome

Answer: AD

NEW QUESTION 115

Refer to the table.

CONNECTIVITY	CAPEX	OPEX ANNUAL	INSTALLATION FEE	TERM
DWDM over dark fiber	\$250,000	\$100,000	\$30,000	12 months
CWDM over dark fiber	\$150,000	\$100,000	\$25,000	18 months
MPLS wires only	\$50,000	\$80,000	\$5,000	24 months
Metro Ethernet	\$45,000	\$100,000	\$5,000	36 months

A customer investigates connectivity options for a DCI between two production data centers to aid a large-scale migration project. The solution must provide a single 10G connection between locations and be able to run its own varying QoS profiles without service provider interaction based on the migration stages. All connectivity methods are at 10 Gbps. Which transport technology costs the least if the connectivity is

required for just one year?

- A. MPLS wires only
- B. CWDM over dark fiber
- C. DWDM over dark fiber
- D. Metro Ethernet

Answer: A

NEW QUESTION 117

Company XYZ is running a redundant private WAN network using OSPF as the underlay protocol. The current design accommodates for redundancy in the network, but it is taking over 30 seconds for the network to reconverge upon failure. Which technique can be implemented in the design to detect such a failure in a subsecond?

- A. STP
- B. fast sharing
- C. OSPF LFA
- D. BFD
- E. flex links

Answer: D

NEW QUESTION 119

Which actions are performed at the distribution layer of the three-layer hierarchical network design model? (Choose two)

- A. Fast transport
- B. Reliability
- C. QoS classification and marking boundary
- D. Fault isolation
- E. Redundancy and load balancing

Answer: DE

NEW QUESTION 122

A multinational enterprise integrates a cloud solution with these objectives:

- Achieve seamless connectivity across different countries and regions
- Extend data center and private clouds into public clouds and provider-hosted clouds

What are two outcomes of deploying data centers and fabrics that interconnect different cloud networks? (Choose two.)

- A. enhanced security
- B. data and network ownership
- C. ability to place workloads across clouds
- D. centralized visibility
- E. unidirectional workload mobility across the cloud

Answer: AC

NEW QUESTION 125

Which two pain points are the most common for container technology adoption? (Choose two)

- A. Performance
- B. Security
- C. Cost
- D. Container deployment
- E. Skilled staff
- F. Compliance

Answer: DE

NEW QUESTION 129

Drag and drop the characteristics from the left onto the corresponding network management options on the right.

protocol based on HTTP for configuring data defined in YANG and supports operations such as GET, PUT, POST, PATCH, and DELETE	NETCONF
provides mechanisms to install, manipulate, and delete the configuration of network devices; uses XML for data encoding and the operation is realized as RPC	RESTCONF
application program interface that uses HTTP requests to GET, PUT, POST, and DELETE data	ANSIBLE
open-source software provisioning, configuration management, and application-deployment tool	YANG
data modeling language used to model configuration data, state data, remote procedure calls, and notifications for network management protocols	REST API

- A. Mastered
B. Not Mastered

Answer: A

Explanation:

Text Description automatically generated

NEW QUESTION 133

You are designing a network for a branch office. In order to improve convergence time, you are required to use the BFD feature Which four routing protocols can you use to facilitate this? (Choose four.)

- A. IS-IS
B. static
C. RIP
D. EIGRP
E. BGP

Answer: ABDE

NEW QUESTION 136

A multicast network is using Bidirectional PIM. Which two combined actions achieve high availability so that two RPs within the same network can act in a redundant manner? (Choose two)

- A. Use two phantom RP addresses
B. Manipulate the administration distance of the unicast routes to the two RPs
C. Manipulate the multicast routing table by creating static mroutes to the two RPs
D. Advertise the two RP addresses in the routing protocol
E. Use anycast RP based on MSDP peering between the two RPs
F. Control routing to the two RPs through a longest match prefix

Answer: AF

Explanation:

<https://community.cisco.com/t5/networking-knowledge-base/rp-redundancy-with-pim-bidir-phantom-rp/ta-p/31>

NEW QUESTION 138

Company ABC uses IPv4-only. Recently they started deploying new endpoint devices. For operational reasons, IPv6 cannot be disabled on these new endpoint devices. Which security measure prevents the new endpoint from learning an IPv6 prefix from an attacker?

- A. Source Guard and Prefix Guard
B. Router Advertisement Guard
C. Prefix Guard
D. Secure Neighbor Discovery

Answer: B

NEW QUESTION 140

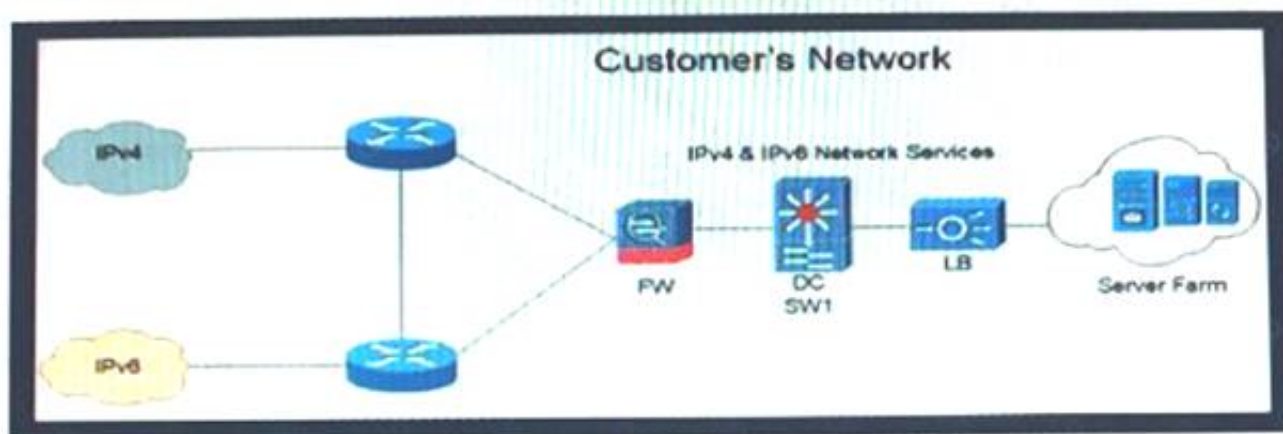
A product manufacturing organization is integrating cloud services into their IT solution The IT team is working on the preparation phase of the implementation approach, which includes the Define Strategy step. This step defines the scope of IT, the application, and the service What is one topic that should be considered in the Define Strategy step?

- A. financial and governance models
- B. innovate and align with business according to volume
- C. due diligence and financial scenarios
- D. contingency exit strategy steps

Answer: D

NEW QUESTION 145

Refer to the exhibit.



Company XYZ is currently running IPv4 but has decided to start the transition into IPv6. The initial objective is to allow communication based on IPv6 wherever possible, and there should still be support in place for devices that only support IPv4. These devices must be able to communicate to IPv6 devices as well. Which solution must be part of the design?

- A. address family translation
- B. dual stack
- C. host-to-host tunneling
- D. 6rd tunneling

Answer: B

NEW QUESTION 147

What are two top cloud-native security challenges faced by today's cloud-oriented organizations? (Choose two.)

- A. establishing user roles
- B. polymorphism
- C. lack of visibility and tracking
- D. increased attack surface
- E. user credential validation

Answer: CD

NEW QUESTION 151

Which two statements explain the operation of BFD asynchronous mode? (Choose two)

- A. BFD asynchronous mode with echo packets combines the control packets and echo packets into a single packet.
- B. BFD asynchronous mode without echo packets uses control packets, and BFD asynchronous mode with echo packets does not.
- C. BFD asynchronous mode with and without echo packets use control packets.
- D. BFD asynchronous without echo packets has control packets sent back to the originating router, which echoes the control packet to detect failures.
- E. BFD asynchronous mode with echo packets uses separate control packets and echo packets.

Answer: CE

NEW QUESTION 155

Software-defined networking architecture is used for cost-effective, adaptable, and easily manageable applications. In which two software-defined networks is SDN commonly used? (Choose two.)

- A. wide area network
- B. mobile network
- C. metro network
- D. application network
- E. control network

Answer: AE

NEW QUESTION 158

Which component of the SDN architecture automatically ensures that application traffic is routed according to policies established by network administrators?

- A. packet forwarding engine
- B. northbound API
- C. southbound API
- D. SDN controller

Answer: D

NEW QUESTION 160

IPFIX data collection via standalone IPFIX probes is an alternative to flow collection from routers and switches. Which use case is suitable for using IPFIX probes?

- A. performance monitoring
- B. security
- C. observation of critical links
- D. capacity planning

Answer: A

NEW QUESTION 164

What are two design constraints in a standard spine and leaf architecture? (Choose two.)

- A. Spine switches can connect to each other.
- B. Each spine switch must connect to every leaf switch.
- C. Leaf switches must connect to each other.
- D. Endpoints connect only to the spine switches.
- E. Each leaf switch must connect to every spine switch.

Answer: BE

NEW QUESTION 166

Company XYZ wants to improve the security design of their network to include protection from reconnaissance and DoS attacks on their sub interfaces destined toward next hop routers. Which technology can be used to prevent these types of attacks?

- A. MPP
- B. CPPr
- C. CoPP
- D. DPP

Answer: B

Explanation:

<https://learningnetwork.cisco.com/s/question/0D53i00000KsuyvCAB/copp-vs-cppr>

NEW QUESTION 170

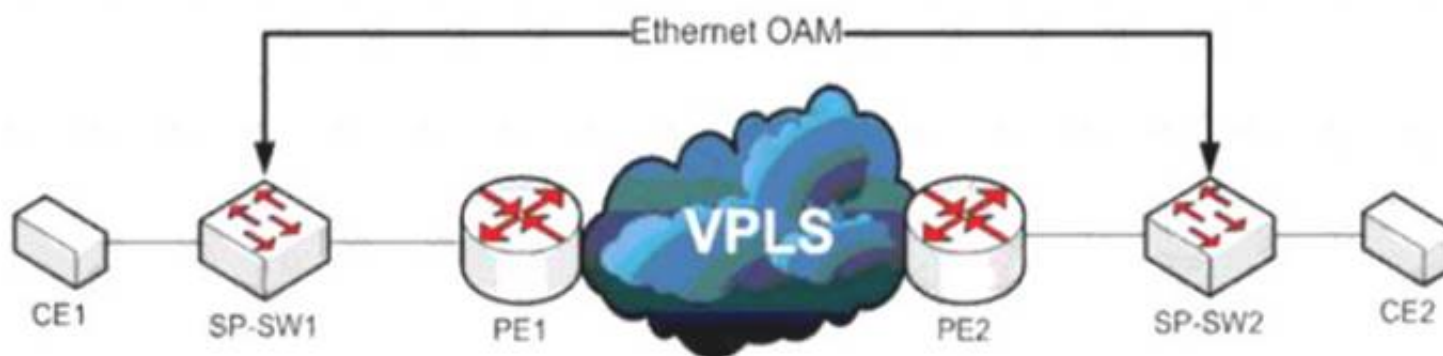
Company XYZ wants to secure the data plane of their network. Which two technologies can be included in the security design? (Choose two)

- A. DAI
- B. IP Source Guard
- C. BEEP
- D. CPPr
- E. MPP

Answer: AB

NEW QUESTION 173

Refer to the exhibit



A service provider has a requirement to use Ethernet OAM to detect end-to-end connectivity failures between SP-SW1 and SP-SW2. Which two ways to design this solution are true? (Choose two)

- A. Enable unicast heartbeat messages to be periodically exchanged between MEPs
- B. Enable Connectivity Fault Management on the SP switches
- C. Use upward maintenance endpoints on the SP switches
- D. Forward E-LMI PDUs over VPLS
- E. Forward LLD PDUs over the VPLS

Answer: BC

NEW QUESTION 176

Which two possible drawbacks should you consider when introducing Network Functions Virtualization in a network design? (Choose two)

- A. Bandwidth utilization increases
- B. Traffic flows are suboptimal
- C. High-end routers are required to support NFV
- D. OpenFlow must be supported in the network
- E. An SDN orchestration layer is required to support NFV

Answer: CE

NEW QUESTION 177

Company XYZ has designed their network to run GRE over IPsec on their Internet-based VPN to connect two sites. Which IPsec tunneling feature can they enable to optimize the data flow while ensuring that the headers contain no duplicate IP addresses?

- A. Transport Mode in IPsec Phase I
- B. Transport Mode in IPsec Phase II
- C. Tunnel Mode in IPsec Phase II
- D. Tunnel Mode in IPsec Phase I

Answer: B

NEW QUESTION 179

You have been tasked with designing a data center interconnect as part of business continuity. You want to use FCoE over this DCI to support synchronous replication. Which two technologies allow for FCoE via lossless Ethernet or data center bridging? (Choose two.)

- A. DWDM
- B. EoMPLS
- C. SONET/SDH
- D. Multichassis EtherChannel over Pseudowire
- E. VPLS

Answer: AC

NEW QUESTION 181

What are two examples of components that are part of an SDN architecture? (Choose two.)

- A. software plane
- B. control plane
- C. application plane
- D. management plane
- E. network plane

Answer: BD

NEW QUESTION 183

Which two characteristics apply to firewall transparent mode operations in a firewall solution design? (Choose two.)

- A. Changes in the existing IP addressing and subnets are required.
- B. The firewall can participate actively on spanning tree.
- C. Multicast traffic can traverse the firewall.
- D. OSPF adjacencies can be established through the firewall.
- E. The firewall acts like a router hop in the network.

Answer: CD

NEW QUESTION 185

Which main IoT migration aspect should be reviewed for a manufacturing plant?

- A. Sensors
- B. Security
- C. Applications
- D. Wi-Fi Infrastructure
- E. Ethernet Switches

Answer: A

NEW QUESTION 186

Which three items do you recommend for control plane hardening of an infrastructure device? (Choose three.)

- A. routing protocol authentication
- B. SNMPv3
- C. Control Plane Policing
- D. redundant AAA servers
- E. warning banners
- F. to enable unused services

Answer: ABC

NEW QUESTION 190

Which two application requirements are mandatory for traffic to receive proper treatment when placed in the priority queue? (Choose two.)

- A. small transactions (HTTP-like behavior)
- B. WRED drop treatment

- C. tolerance to packet loss
- D. intolerance to jitter
- E. TCP-based application

Answer: AD

NEW QUESTION 192

The Agile Manifesto is a document that defines the key values and principles behind the Agile philosophy and helps development teams work more efficiently and sustainably Each of the four key values is split into two sections a left-hand side and a right-hand side In other words, though there is value in the items on the right we value the items on the left more What is one of the key values of the Agile Manifesto?

- A. comprehensive documentation over working software
- B. contract negotiation over customer collaboration
- C. individuals and interactions over processes and tools
- D. following a plan over responding to change

Answer: C

NEW QUESTION 196

A green data center is being deployed and a design requirement is to be able to readily scale server virtualization Which IETF standard technology can provide this requirement?

- A. data center bridging
- B. unified fabric
- C. Transparent Interconnection of Lots of Links
- D. fabric path

Answer: C

NEW QUESTION 201

Company XYZ wants to use the FCAPS ISO standard for network management design. The focus of the design should be to minimize network outages by employing a set of procedures and activities to detect and isolate network issues and the appropriate corrective actions to overcome current issues and prevent them from occurring again. Which layer accomplishes this design requirement?

- A. fault management
- B. performance management
- C. security management
- D. accounting management

Answer: A

NEW QUESTION 202

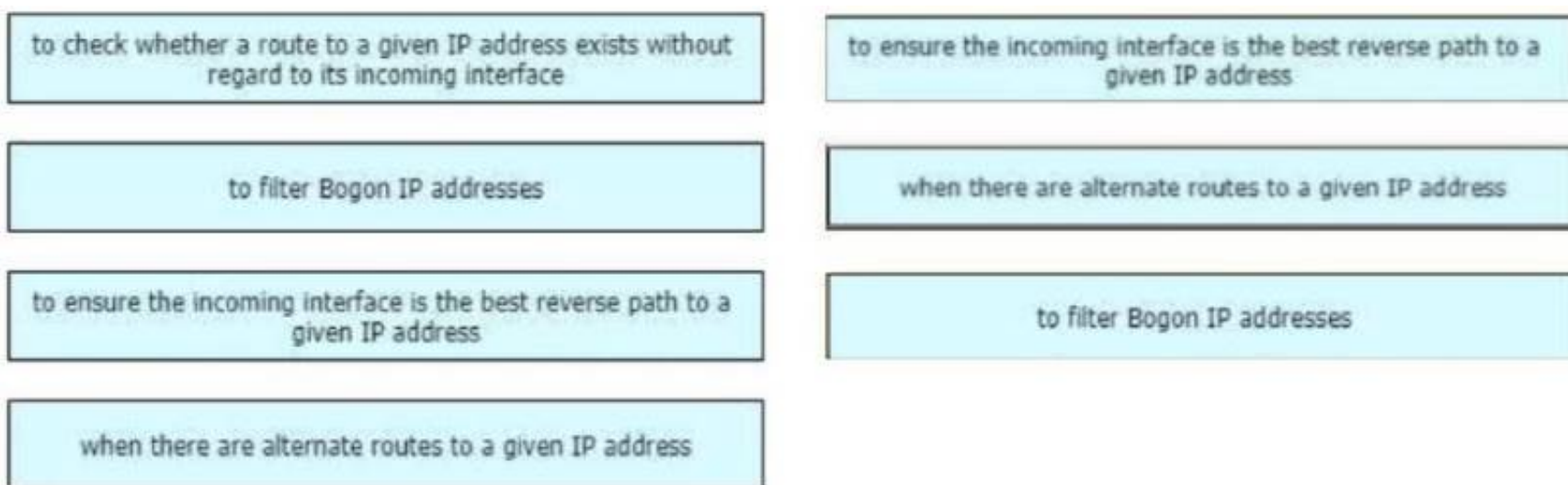
Drag and drop the design use cases from the left onto the correct uRPF techniques used to prevent spoofing attacks Not all options are used.

to check whether a route to a given IP address exists without regard to its incoming interface	strict mode
to filter Bogon IP addresses	feasible mode
to ensure the incoming interface is the best reverse path to a given IP address	loose mode
when there are alternate routes to a given IP address	

- A. Mastered
- B. Not Mastered

Answer: A

Explanation:



NEW QUESTION 205

Company XYZ wants to use the FCAPS ISO standard for network management design. The focus of the design should be to monitor and keep track of any performance issues by continuously collecting and analyzing statistical information to monitor, correct, and optimize any reduced responsiveness across the network. Which layer accomplishes this design requirement?

- A. fault management
- B. accounting management
- C. performance management
- D. security management

Answer: C

NEW QUESTION 206

A customer migrates from a traditional Layer 2 data center network into a new SDN-based, spine-and-leaf VXLAN EVPN data center within the same location. The networks are joined to enable host migration at Layer 2. Which activity should be completed each time a legacy network is migrated?

- A. The migrated VLAN should be pruned from the Layer 2 interconnects.
- B. The migrated network should have a VXLAN VNID configured within the new network.
- C. The migrated network should be advertised to the EVPN network as a Type 2 network.
- D. The migrated network should be added to the EVPN BGP routing.

Answer: C

NEW QUESTION 207

A network security team observes phishing attacks on a user machine from a remote location. The organization has a policy of saving confidential data on two different systems using different types of authentication. What is the next step to control such events after the security team verifies all users in Zero Trust modeling?

- A. Enforce risk-based and adaptive access policies.
- B. Assess real-time security health of devices.
- C. Apply a context-based network access control policy for users.
- D. Ensure trustworthiness of devices.

Answer: B

NEW QUESTION 211

What are two descriptions of network optimization? (Choose two.)

- A. maintain high availability
- B. proactive network management
- C. network redesign
- D. network health maintenance
- E. identify network requirements

Answer: AD

NEW QUESTION 213

An architect prepares a network design for a startup company. The design must be able to meet business requirements while the business grows and divests due to rapidly changing markets. What is the highest priority in this design?

- A. The network should be hierarchical
- B. The network should be modular.
- C. The network should be scalable.
- D. The network should have a dedicated core.

Answer: A

NEW QUESTION 218

Which two factors must be considered for high availability in campus LAN designs to mitigate concerns about unavailability of network resources? (Choose two.)

- A. device resiliency
- B. device type
- C. network type
- D. network resiliency
- E. network size

Answer: AD

NEW QUESTION 219

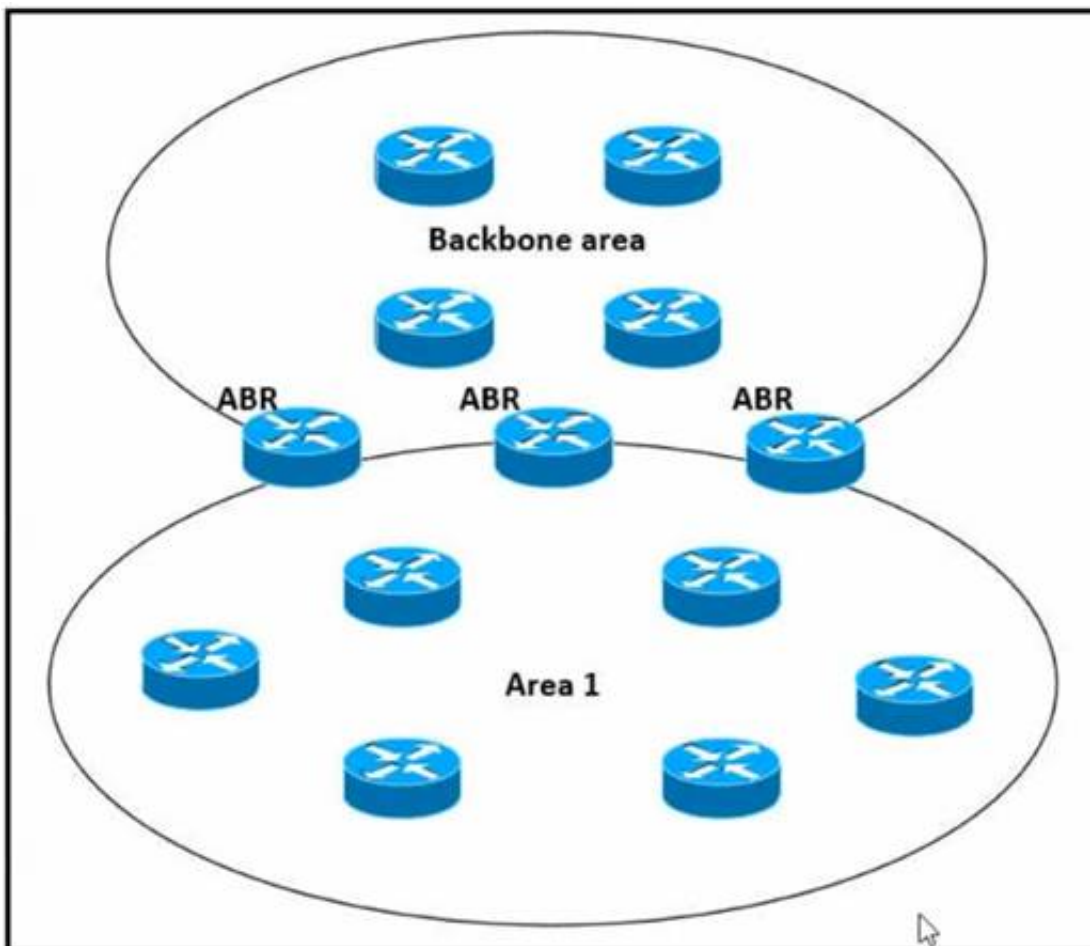
The major business applications of an enterprise are largely monolithic and hard-coded. As part of a major modernization and overhaul of the applications, the goal is to move to a modular and containerized application architecture mode. At the same time, decoupling from the hardware is desired to move to an on-demand provisioning. However, the CyberOps team mandated that the final architecture must provide the same security levels as an air-gapped data center. Which cloud architecture meets these requirements?

- A. IaaS
- B. private cloud
- C. PaaS
- D. hybrid cloud
- E. public cloud

Answer: B

NEW QUESTION 221

Refer to the exhibit.



Which impact of using three or more ABRs between the backbone area and area 1 is true?

- A. In a large-scale network, LSA replication by all ABRs can cause serious scalability issues.
- B. Multiple ABRs reduce the CPU processing on each ABR due to splitting prefix advertisement.
- C. In a large-scale network, multiple ABRs can create microloops.
- D. Prefixes from the non-backbone area are advertised by one ABR to the backbone.

Answer: A

NEW QUESTION 225

A consultant needs to evaluate project management methodologies for a new service deployment on the existing network of a customer. The customer wants to be involved in the end-to-end project progress and be provided with frequent updates. The customer also wants the ability to change the requirements if needed, as the project progresses. Which project management methodology should be used?

- A. three principles
- B. phased
- C. Agile
- D. Waterfall

Answer: C

NEW QUESTION 226

Company XYZ has implemented policy-based routing in their network. Which potential problem must be kept in mind about network reconvergence and PBR?

- A. It can limit network scalability.
- B. It can create microloops during reconvergence.
- C. It increases convergence time.

D. It reduces convergence time.

Answer: B

NEW QUESTION 229

A network engineering team is in the process of designing a lab network for a customer demonstration. The design engineer wants to show that the resiliency of the MPLS traffic Engineering Fast Reroute solution has the same failover/failback times as a traditional SONET/SDH network (around 50MSEC). In order to address both link failure and node failure within the lab typology network, which type of the MPLS TE tunnels must be considered for this demonstration?

- A. TE backup tunnel
- B. Next-hop (NHop) tunnel
- C. FRR Backup tunnel
- D. next-next-hop (NNHop) tunnel

Answer: D

NEW QUESTION 234

Which function is performed at the access layer of the three-layer hierarchical network design model?

- A. fault isolation
- B. QoS classification and marking boundary
- C. reliability
- D. fast transport
- E. redundancy and load balancing

Answer: B

NEW QUESTION 239

Company XYZ has a multicast domain that spans across multiple autonomous systems. The company wants to choose a technology that provides simplified and controlled approach to interconnecting the multicast domains. Which technology is the best fit for this purpose?

- A. MSDP
- B. PIM SSM
- C. MPLS
- D. PIM sparse mode

Answer: A

NEW QUESTION 241

Which best practice ensures data security in the private cloud?

- A. Use IPsec for communication between unsecured network connection
- B. Encrypt data at rest and in transition.
- C. Use the same vendor for consistent encryption.
- D. Anonymize data ownership to comply with privacy rules.

Answer: B

NEW QUESTION 242

In the case of outsourced IT services, the RTO is defined within the SLA. Which two support terms are often included in the SLA by IT and other service providers? (Choose two.)

- A. network size and cost
- B. support availability
- C. network sustainability
- D. network reliability
- E. resolution time

Answer: BE

NEW QUESTION 246

Which mechanism provides Layer 2 fault isolation between data centers?

- A. fabric path
- B. OTL
- C. advanced VPLS
- D. LISP
- E. TRILL

Answer: D

NEW QUESTION 249

An engineer is designing the QoS strategy for Company XYZ. Based on initial analysis, a lot of scavenger type of traffic is traversing the network's 20Mb Internet link toward the service provider. The new design must use a QoS technique that limits scavenger traffic to 2 Mbps, which helps avoid oversubscription of the link during times of congestion. Which QoS technique can be used to facilitate this requirement?

- A. class-based traffic policing
- B. LLQ
- C. CBWFQ
- D. class-based traffic shaping

Answer: D

NEW QUESTION 251

What are two primary design constraints when a robust infrastructure solution is created? (Choose two.)

- A. monitoring capabilities
- B. project time frame
- C. staff experience
- D. component availability
- E. total cost

Answer: BE

NEW QUESTION 254

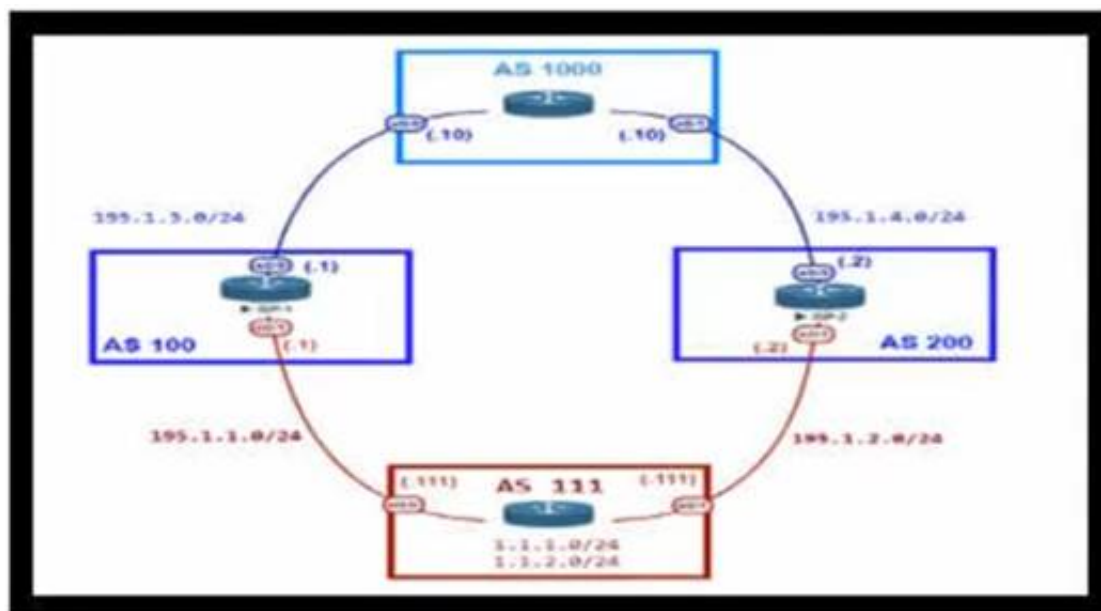
When designing a WAN that will be carrying real-time traffic, what are two important reasons to consider serialization delay? (Choose two)

- A. Serialization delays are invariable because they depend only on the line rate of the interface
- B. Serialization delays are variable because they depend on the line rate of the interface and on the type of the packet being serialized.
- C. Serialization delay is the time required to transmit the packet on the physical media.
- D. Serialization delays are variable because they depend only on the size of the packet being serialized
- E. Serialization delay depends not only on the line rate of the interface but also on the size of the packet

Answer: BD

NEW QUESTION 255

Refer to the exhibit.



An engineer is designing the network for a multihomed customer running in AS 111 does not have any other ASs connected to it. Which technology is more comprehensive to use in the design to make sure that the AS is not being used as a transit AS?

- A. Configure the AS-set attribute to allow only routes from AS 111 to be propagated to the neighbor ASs.
- B. Use the local preference attribute to configure your AS as a non-transit" AS.
- C. include an AS path access list to send routes to the neighboring ASs that only have AS 111 in the AS path field.
- D. Include a prefix list to only receive routes from neighboring ASs.

Answer: C

NEW QUESTION 260

A business customer deploys workloads in the public cloud. Now the customer network faces governance issues with the flow of IT traffic and must ensure the security of data and intellectual property. Which action helps to identify the issue for further resolution?

- A. Set up a secure tunnel from customer routers to ensure that traffic is protected as it travels to the cloud service providers.
- B. Send IPFIX telemetry data from customer routers to a centralized collector to identify traffic to cloud service providers
- C. Build a zone-based firewall policy on Internet edge firewalls that collects statistics on traffic sent to cloud service providers
- D. Apply workload policies that dictate the security requirements to the workloads that are placed in the cloud.

Answer: B

NEW QUESTION 262

During evaluation of migrating current on premises infrastructure to add cloud-based infrastructure, a network planning team must meet three core requirements as they make recommendations on which cloud strategy to adopt going forward

- Technology is changing rapidly, therefore the enterprise must be open to adopting new ways of doing things, and be ready to invest CapEx-funds in the next three years
- Network bandwidth capacity requirements are dynamic and are expected to change over the next year
- If new technologies are to be introduced, operational expenses must be kept at a minimum.

Which cloud strategy meets these requirements?

- A. private
- B. hybrid
- C. public
- D. multcloud

Answer: D

NEW QUESTION 263

Hybrid cloud computing allows organizations to take advantage of public and private cloud models. Which best practice should organizations follow to ensure data security in the private cloud?

- A. Use standard protocols for data transmission over the network.
- B. Encrypt data when it is at rest and in motion.
- C. Communicate all data security risks to customers and end users.
- D. Use standard network protocols for data communication between unsecured network connections.

Answer: B

NEW QUESTION 265

Company XYZ is designing their network using the three-layer hierarchical model. At which layer must the QoS design classify or mark the traffic?

- A. access
- B. core
- C. collapsed core
- D. distribution

Answer: A

NEW QUESTION 266

Company XYZ, a global content provider, owns data centers on different continents. Their data center design involves a standard three-layer design with a Layer 3-only core. HSRP is used as the FHRP. They require VLAN extension across access switches in all data centers, and they plan to purchase a Layer 2 interconnection between two of their data centers in Europe. In the absence of other business or technical constraints, which termination point is optimal for the Layer 2 interconnection?

- A. at the core layer, to offer the possibility to isolate STP domains
- B. at the aggregation layer because it is the Layer 2 to Layer 3 demarcation point
- C. at the access layer because the STP root bridge does not need to align with the HSRP active node.
- D. at the core layer because all external connections must terminate there for security reasons

Answer: B

NEW QUESTION 268

Agile and Waterfall are two popular methods for organizing projects. What describes any Agile network design development process?

- A. working design over comprehensive documentation
- B. contract negotiation over customer collaboration
- C. following a plan over responding to change
- D. processes and tools over individuals and interactions over time

Answer: A

NEW QUESTION 271

Which extensions to GRE tunneling provide session tracking and in-order packet delivery in exchange for additional state stored in tunnel endpoints?

- A. GRE Protocol Type and Checksum extension fields.
- B. GRE Version and Reserved0 extension fields.
- C. No extension fields are available in the GRE header to track session data and packet sequences.
- D. GRE Key and Sequence number extensions.

Answer: D

NEW QUESTION 272

A business wants to refresh its legacy Frame Relay WAN. It currently has product specialists in each of its 200 branches but plans to reduce and consolidate resources. The goal is to have product specialists available via video link when customers visit the nationwide branch offices. Which technology should be used to meet this objective?

- A. DMVPN phase 1 network over the Internet
- B. Layer 3 MPLS VPN hub and spoke
- C. Layer 2 VPLS
- D. Layer 3 MPLS VPN full mesh

Answer: D

NEW QUESTION 276

Which technology is an open-source infrastructure automation tool that automates repetitive tasks for users who work in networks such as cloud provisioning and

intraservice orchestration?

- A. Ansible
- B. Contrail
- C. Java
- D. Jinja2

Answer: A

NEW QUESTION 280

What is an architectural framework created by ETSI that defines standards to decouple network functions from proprietary hardware-based appliances and have them run in software on standard x86 servers?

- A. NPIV
- B. NFVIS
- C. NFV
- D. VNF

Answer: C

NEW QUESTION 283

Which two aspects are considered when designing a dual hub dual DMVPN cloud topology? (Choose two)

- A. will only work with single-tier headend architecture
- B. hub sites must connect to both DMVPN clouds
- C. recommended for high availability
- D. spoke-to-spoke traffic will transit the hub unless spokes exchange dynamic routing directly
- E. requires all sites to have dual Internet connections

Answer: AC

NEW QUESTION 288

An existing wireless network was designed to support data traffic only. You must now install context Aware services for location tracking changes must be applied to the existing wireless network to increase the location accuracy? (Chose two)

- A. Add access points along the perimeter of the coverage area.
- B. Increase the access point density to create an average inter-access point distance of less than 40 feet or 12.2 meters
- C. Use directional antennas to provide more cell overlapping
- D. Install additional access points in monitor mode where the co-channel interference would otherwise be affected
- E. Fine tune the radio configuration of the access point to have a higher average transmission power to achieve better coverage

Answer: BE

NEW QUESTION 290

Drag and drop the multicast protocols from the left onto the current design situation on the right.

PIM-SM, SSM, BIDIR

PIM-DM, PIM-SM, SSM, BIDIR

IGMP

MSDP

MP-BGP

MLD

IPv4

host registration

router registration

intherdomain source discovery

IPv6

host registration

router registration

- A. Mastered
- B. Not Mastered

Answer: A

Explanation:

A picture containing table Description automatically generated

NEW QUESTION 293

Refer to the table.

CONNECTIVITY	CAPEX	OPEX ANNUAL	INSTALLATION FEE	TERM
DWDM over dark fiber	\$200,000	\$100,000	\$30,000	12 months
CWDM over dark fiber	\$150,000	\$100,000	\$25,000	18 months
MPLS wires only	\$50,000	\$180,000	\$5,000	12 months
Metro Ethernet	\$65,000	\$100,000	\$5,000	36 months

A customer investigates connectivity options for a DCI between two production data centers to aid a large-scale migration project. The migration is estimated to take 20 months to complete but might extend an additional 10 months if issues arise. All connectivity options meet the requirements to migrate workloads. Which transport technology provides the best ROI based on cost and flexibility?

- A. CWDM over dark fiber
- B. MPLS
- C. DWDM over dark fiber
- D. Metro Ethernet

Answer: D

NEW QUESTION 298

Which two statements describe the functionality of OSPF packet-pacing timers? (Choose two) The group-pacing timer controls the interval that is used for group and individual LSA refreshment

- A. OSPF flood-pacing timers allow dynamic control of the OSPF transmission queue size
- B. OSPF retransmission-pacing timers allow control of interpacket spacing between consecutive link-state update packets in the OSPF retransmission queue.
- C. OSPF retransmission-pacing timers allow control of packet interleaving between nonconsecutive link-state update packets in the OSPF retransmission queue.
- D. OSPF flood-pacing timers allow control of interpacket spacing between consecutive link-state update packets in the OSPF transmission queue

Answer: BD

NEW QUESTION 301

Organizations that embrace Zero Trust initiatives ranging from business policies to technology infrastructure can reap business and security benefits. Which two domains should be covered under Zero Trust initiatives? (Choose two)

- A. workload
- B. work domain
- C. workplace
- D. workgroup
- E. workspace

Answer: AC

NEW QUESTION 302

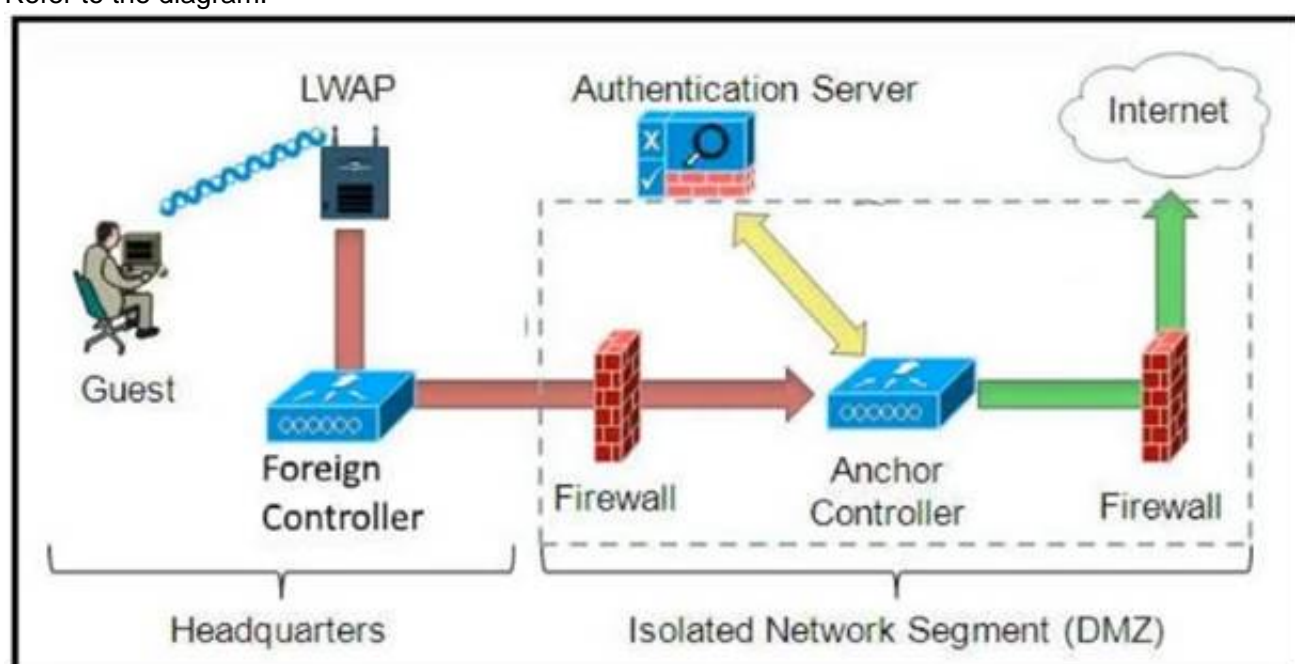
A banking customer determines that it is operating POS and POI terminals that are noncompliant with PCI DSS requirements, as it is running TLSv1.0. The customer plans to migrate the terminals to TLSv1.2. What are two requirements to complete the migration? (Choose two.)

- A. Ensure that strong cryptography is applied for users who have administrative access through networks
- B. Apply strong cryptography and security protocols to safeguard sensitive cardholder data.
- C. Apply strong encryption for transmission of cardholder data across public networks.
- D. Protect all user systems against malware and frequently update antivirus software
- E. Maintain a policy that addresses information security for employees and third parties.

Answer: CE

NEW QUESTION 305

Refer to the diagram.



Which solution must be used to send traffic from the foreign wireless LAN controller to the anchor wireless LAN controller?

- A. Send packets from the foreign controller to the anchor controller via Layer 3 MPLS VPN or VRF-Lite
- B. Send packets without encapsulation to the anchor controller over the routed network.
- C. Encapsulate packets into an EoIP tunnel and send them to the anchor controller.
- D. Send packets from the foreign controller to the anchor controller via IPinIP or IPsec tunnel.

Answer: C

NEW QUESTION 309

How many fully established neighbour relationships exist on an Ethernet with five routers running OSPF as network type broadcast?

- A. 5
- B. 6
- C. 7
- D. 10
- E. 20

Answer: C

Explanation:

Assuming routers R1-R5, R1 is elected DR, R2 BDR. Fully established neighborships only occur to DR and BDR, all other neighbors are in 2Way DR other state.
DR|BDRFull relationships:

R2-R1 R3-R1 R3-R2 R4-R1 R4-R2 R5-R1 R5-R2

NEW QUESTION 314

An external edge router provides connectivity from a service provider to an enterprise Which two Internet edge best practices meet compliance regulations'?
(Choose two)

- A. Implement filterng to control traffic that is sourced from the infrastructure IP space.
- B. Enable and use only secure protocols.
- C. Send logs to a centralized logging collection server.
- D. Implement EBGP to advertise all owned IP blocks.
- E. Use login banners and interface access lists to restrict administrative access to the system

Answer: BE

NEW QUESTION 315

A Tier-3 Service Provider is evolving into a Tier-2 Service Provider due to the amount of Enterprise business it is receiving The network engineers are re-evaluating their IP/MPLS design considerations in order to support duplicate/overlapping IP addressing from their Enterprise customers within each Layer3 VPN. Which concept would need to be reviewed to ensure stability in their network?

- A. Assigning unique Route Distinguishers
- B. Assigning unique Route Target ID'S
- C. Assigning unique IP address space for the Enterprise NAT/Firewalls
- D. Assigning unique VRF ID's to each L3VPN

Answer: A

NEW QUESTION 316

An enterprise wants to provide low-cost delivery of network systems that can be scaled on business demand, followed by an initiative to reduce capital expenses for new IT equipment. Which technology meets these goals'?

- A. IaaS within a private cloud
- B. IaaS within an on-premises location
- C. PaaS within a public cloud
- D. SaaS within an on-premises location

Answer: C

NEW QUESTION 320

Identity and access management between multiple users and multiple applications has become a mandatory requirement for Company XYZ to fight against ever increasing cybersecurity threats. To achieve this, federated identity services have been deployed in the Company XYZ network to provide single sign-on and Multi-Factor Authentication for the applications and services. Which protocol can be used by Company XYZ to provide authentication and authorization services?

- A. OAuth2
- B. OpenID Connect
- C. OpenID
- D. SAML2.0

Answer: D

NEW QUESTION 324

SD-WAN can be used to provide secure connectivity to remote offices, branch offices, campus networks, data centers, and the cloud over any type of IP-based underlay transport network. Which two statements describe SD WAN solutions? (Choose two.)

- A. SD-WAN networks are inherently protected against slow performance.
- B. Control and data forwarding planes are kept separate.
- C. Improved operational efficiencies result In cost savings.

- D. Solutions include centralized orchestration, control, and zero-touch provisioning.
- E. Solutions allow for variations of commodity and specialized switching hardware.

Answer: BD

NEW QUESTION 329

An enterprise plans to evolve from a traditional WAN network to a software-defined WAN network. The existing devices have limited capability when it comes to virtualization. As the migration is carried out, enterprise applications and services must not experience any traffic impact. Which implementation plan can be used to accommodate this during the migration phase?

- A. Deploy controllers, deploy SD-WAN edge router
- B. In the data center, and migrate branch sites.
- C. Migrate data center WAN routers, migrate branch sites, and deploy SD-WAN edge routers.
- D. Migrate branch sites, migrate data center WAN routers, and deploy controllers.
- E. Deploy SD-WAN edge routers in the data center, deploy controllers, and migrate branch sites

Answer: A

NEW QUESTION 331

An MPLS service provider is offering a standard EoMPLS-based VPLS service to Customer A. providing Layer 2 connectivity between a central site and approximately 100 remote sites. Customer A wants to use the VPLS network to carry its internal multicast video feeds which are sourced at the central site and consist of 20 groups at Mbps each. Which service provider recommendation offers the most scalability?

- A. EoMPLS-based VPLS can carry multicast traffic in a scalable manner
- B. Use a mesh of GRE tunnels to carry the streams between sites
- C. Enable snooping mechanisms on the provider PE routers.
- D. Replace VPLS with a Layer 3 MVPN solution to carry the streams between sites

Answer: D

NEW QUESTION 333

Which feature must be part of the network design to wait a predetermined amount of time before notifying the routing protocol of a change in the path in the network?

- A. Transmit delay
- B. Throttle timer
- C. SPF hold time
- D. Interface dampening

Answer: B

NEW QUESTION 337

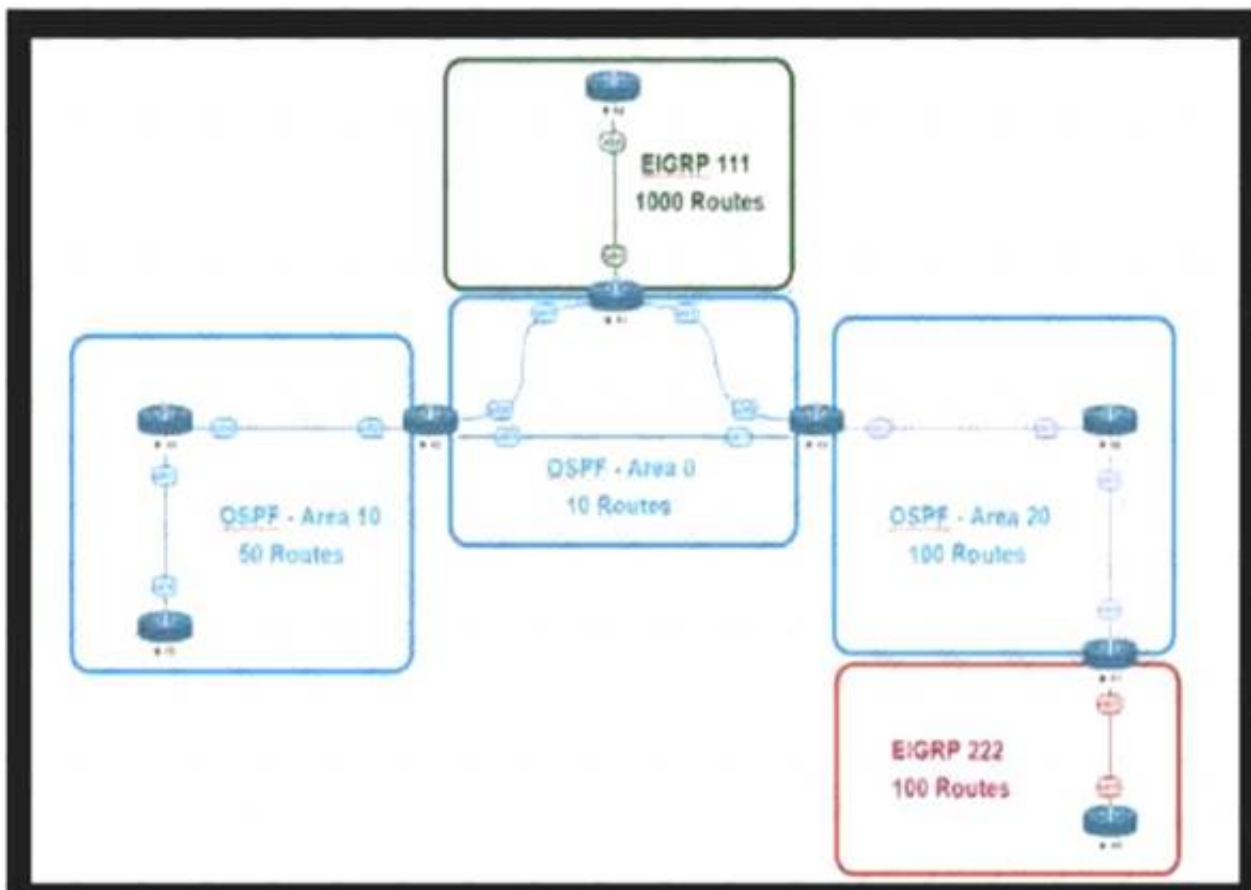
The controller has a global view of the network, and it can easily ensure that the network is in a consistent and optimal configuration. Which two statements describe a centralized SDN control path? (Choose two.)

- A. Scaling of the centralized controller cluster is challenging for services like DHCP and load-balancing.
- B. It is highly-available by design with no single-point-of-failure risks present.
- C. Integrating smart NIC capabilities on the local host level is made easier through rest APIs.
- D. It significantly improves the latency when performing reactive handling of PACKET_IN events.
- E. It centralized controller can support all southbound APIs, which allows for easy integration with legacy equipment.

Answer: AE

NEW QUESTION 338

Refer to the exhibit.



This network is running OSPF and EIGRP as the routing protocols. Mutual redistribution of the routing protocols has been configured on the appropriate ASBRs. The OSPF network must be designed so that flapping routes in EIGRP domains do not affect the SPF runs within OSPF. The design solution must not affect the way EIGRP routes are propagated into the EIGRP domains. Which technique accomplishes the requirement?

- A. route summarization on the ASBR interfaces facing the OSPF domain
- B. route summarization on the appropriate ASBRs.
- C. route summarization on the appropriate ABRs.
- D. route summarization on EIGRP routers connecting toward the ASBR

Answer: B

NEW QUESTION 341

SDN emerged as a technology trend that attracted many industries to move from traditional networks to SDN. Which challenge is solved by SDN for cloud service providers?

- A. need for intelligent traffic monitoring
- B. exponential growth of resource-intensive application
- C. complex and distributed management flow
- D. higher operating expense and capital expenditure

Answer: B

NEW QUESTION 342

If the desire is to connect virtual network functions together to accommodate different types of network service connectivity, what must be deployed?

- A. bridging
- B. service chaining
- C. linking
- D. daisy chaining
- E. switching

Answer: B

Explanation:

Service chaining is the technique of connecting virtual network functions together to provide different types of network service connectivity. Service chaining uses software-defined networking (SDN) programmability to create a chain of connected network services, such as firewalls, load balancers, NAT, and intrusion protection. Service chaining can automate the provisioning of network applications that have different characteristics and requirements, such as security, latency, or quality of service (QoS). Service chaining can also optimize the use of network resources and improve application performance by using SDN analytics and performance tools to select the best available network paths and avoid network congestion. Service chaining is being used in many SDN and network functions virtualization (NFV) use cases and deployments, such as data centers, carrier networks, and virtual customer edge. References:

- > 1: What is Network Service Chaining or Service Function Chaining - SDxCentral
- > 2: On service chaining using Virtual Network Functions in Network-enabled Cloud systems | IEEE Conference Publication | IEEE Xplore
- > 3: Service function chaining - Gini5

NEW QUESTION 346

How must the queue sizes be designed to ensure that an application functions correctly?

- A. Each individual device queuing delay in the chain must be less than or equal to the application required delay.
- B. The queuing delay on every device in the chain must be exactly the same to the application required delay.
- C. The default queue sizes are good for any deployment as it compensates the serialization delay.
- D. The sum of the queuing delay of all devices plus serialization delay in the chain must be less than or equal to the application required delay.

Answer: D

NEW QUESTION 348

How can EIGRP topologies be designed to converge as fast as possible in the event of a point-to-point link failure?

- A. Limit the query domain by use of distribute lists.
- B. Build neighbor adjacencies in a triangulated fashion.
- C. Build neighbor adjacencies in squared fashion.
- D. Limit the query domain by use of summarization.
- E. Limit the query domain by use of default routes.

Answer: D

NEW QUESTION 350

Company XYZ is migrating their existing network to IPv6 and they must plan for Layer 2 and Layer 3 devices. Some of the access layer switches do not support IPv6, however, core and distribution switches fully support unicast and multicast routing. The company wants to minimize cost of the migration. Which migration strategy should be used in the design?

- A. The access layer switches must support IGMP snooping at a minimum.
- B. Any switches that do not support IGM snooping must be replaced.
- C. Upgrade the nonsupporting switches. Otherwise, it will cause an issue with the migration.
- D. Layer 2 switches will not affect the implementation of IPv6. They can be included in the design in their current state.
- E. The access layer switches must support DHCPv6. Any switches that do not support DHCPv6 must be replaced.

Answer: C

NEW QUESTION 352

Which network management framework can be used to develop a network architecture that contains business requirements analysis, gap analysis, and network diagrams as artifacts to be used for design and implementation later?

- A. TOG
- B. ITIL
- C. FCAPS
- D. Cobit

Answer: A

NEW QUESTION 357

Drag and drop the optical technology design characteristics on the left to the correct optical technologies on the right. Not all options are used.

suited for short-haul and long-haul distances	CWDM (Coarse Wavelength Division Multiplexing)	target 1
number of channels can be 40 or more		target 2
large channel spacing (2000 GHz)		target 3
small channel spacing (100 or 50 GHz)	DWDM (Dense Wavelength Division Multiplexing)	target 4
suited for short-haul, typically limited to Metropolitan networks		target 5
maximum of 16 channels		target 6
only suitable for ring or dual-ring topology		

- A. Mastered
- B. Not Mastered

Answer: A

Explanation:

- 1 - target 4
- 2 - target 5
- 3 - target 1
- 4 - target 6
- 5 - target 2
- 6 - target 3

NEW QUESTION 361

The General Bank of Greece plans to upgrade its legacy end-of-life WAN network with a new flexible, manageable, and scalable solution. The main requirements are ZTP support, end-to-end encryption application awareness and segmentation. The CTO states that the main goal of the bank is CAPEX reduction. Which WAN technology should be used for the solution?

- A. SD-branch
- B. DMVPN with PfR
- C. managed SD-WAN
- D. SD-WAN

Answer: C

NEW QUESTION 364

Which undesired effect of increasing the jitter compensation buffer is true?

- A. The overall transport jitter decreases and quality improves.
- B. The overall transport jitter increases and quality issues can occur.
- C. The overall transport delay increases and quality issues can occur.
- D. The overall transport delay decreases and quality improves.

Answer: C

NEW QUESTION 366

.....

Thank You for Trying Our Product

We offer two products:

1st - We have Practice Tests Software with Actual Exam Questions

2nd - Questions and Answers in PDF Format

400-007 Practice Exam Features:

- * 400-007 Questions and Answers Updated Frequently
- * 400-007 Practice Questions Verified by Expert Senior Certified Staff
- * 400-007 Most Realistic Questions that Guarantee you a Pass on Your First Try
- * 400-007 Practice Test Questions in Multiple Choice Formats and Updates for 1 Year

100% Actual & Verified — Instant Download, Please Click
[Order The 400-007 Practice Test Here](#)