



Fortinet

Exam Questions NSE6_FWF-6.4

Fortinet NSE 6 - Secure Wireless LAN 6.4

NEW QUESTION 1

Refer to the exhibits.

Exhibit A

```
config wireless-controller wtp-profile
  edit "Main Networks - FAP-320C"
    set comment "Profile with standard networks"
    config platform
      set type 320C
    end
    set handoff-rssi 30
    set handoff-sta-thresh 30
    set ap-country GB
    config radio-1
      set band 802.11n
      set power-level 50
      set channel-utilization enable
      set wids-profile "default-wids-apscan-enabled"
      set darrp enable
      set vap-all manual
      set vaps "Main-Wifi" "Contractors" "Guest"
      "Wifi_IOT" "Wifi_POS" "Staff" "Students"
      set channel "1" "6" "11"
    end
    config radio-2
      set band 802.11ac
      set channel-bonding 40MHz
      set power-level 60
      set channel-utilization enable
      set wids-profile "default-wids-apscan-enabled"
      set darrp enable
      set vap-all manual
      set vaps "Main-Wifi" "Contractors" "Guest"
      "Wifi_IOT" "Wifi_POS" "Staff" "Students"
      set channel "36" "44" "52" "60"
    end
  end
next
end
```

Exhibit B

Diagnostics and Tools - Office

Office

Serial Number

FPXXXXXXXXXXXX

Base MAC Address

XX:XX:XX:XX:XX:XX

Status

Online

Country/Region

GB

Uplink Interface

FortiAP management (ap)

IPv4 Address

192.168.5.98

Uptime

12m1s

Version

v6.4 build0437

Actions

General

56%

CPU Usage

70%

Memory Usage

0 days

Connection Uptime

1.0 Gbps

lan1

0 Mbps

lan2

Radio 1 - 2.4 GHz

31

Interfering SSIDs

1

Clients

25%

Channel Utilization

Radio 2 - 5 GHz

0

Interfering SSIDs

30

Clients

5%

Channel Utilization

Radios

Clients

Interfering SSIDs

Logs

CLI Access

Spectrum Analysis

VLAN Probe

Radio 1 - 2.4 GHz

Radio 2 - 5 GHz

Mode

AP

SSID

fortinet (Main-WiFi)

fortinet2 (Contractors)

fortinet3 (Guest)

Clients

1

Bandwidth Tx

4.65 kbps

Bandwidth Rx

20.46 kbps

Operating Channel

1

Channels

Operating TX Power

3 dBm

Band

802.11n

Interfering SSIDs for Office (Radio 1)

x

Refresh

Search

SSID

AP BSSID

Channel

Signal

Husky

aa:aa:aa:aa:aa

1

-84 dBm

Husky guest

bb:bb:bb:bb:bb

1

-84 dBm

KBANK5007

cc:cc:cc:cc:cc

1

-85 dBm

mandikaylee

dd:dd:dd:dd:dd

1

-86 dBm

ee:ee:ee:ee:ee

1

-87 dBm

HUAWEI-EMIX4f

ee:ee:ee:ee:ef

1

-88 dBm

trojan-3

ff:ff:ff:ff:ff

1

-88 dBm

fg:gg:gg:gg:gg

1

-89 dBm

hg:gg:gg:gg:gg

1

-89 dBm

Exhibit C

Guaranteed success with Our exam guides

visit - https://www.certshared.com

```
# get wireless-controller rf-analysis FPXXXXXXXXXXXXXX
```

```
WTP: Office 0-192.168.5.98:5246
```

channel	rss-total	rf-score	overlap-ap	interfere-ap	chan-utilization
1	100	6	13	13	63%
2	23	10	0	22	47%
3	15	10	0	22	15%
4	24	10	0	22	15%
5	51	10	0	22	41%
6	223	1	9	9	75%
7	52	10	0	17	47%
8	32	10	0	17	13%
9	27	10	0	19	10%
10	45	10	0	19	28%
11	177	1	8	10	65%
12	46	10	0	10	34%
13	45	10	2	10	70%
14	14	10	0	10	0%
36	16	10	2	2	0%
44	83	7	5	5	0%

A wireless network has been installed in a small office building and is being used by a business to connect its wireless clients. The network is used for multiple purposes, including corporate access, guest access, and connecting point-of-sale and IoT devices.

Users connecting to the guest network located in the reception area are reporting slow performance. The network administrator is reviewing the information shown in the exhibits as part of the ongoing investigation of the problem. They show the profile used for the AP and the controller RF analysis output together with a screenshot of the GUI showing a summary of the AP and its neighboring APs.

To improve performance for the users connecting to the guest network in this area, which configuration change is most likely to improve performance?

- A. Increase the transmission power of the AP radios
- B. Enable frequency handoff on the AP to band steer clients
- C. Reduce the number of wireless networks being broadcast by the AP
- D. Install another AP in the reception area to improve available bandwidth

Answer: B

NEW QUESTION 2

Which two statements about background rogue scanning are correct? (Choose two.)

- A. A dedicated radio configured for background scanning can support the connection of wireless clients
- B. When detecting rogue APs, a dedicated radio configured for background scanning can suppress the rogue AP
- C. Background rogue scanning requires DARRP to be enabled on the AP instance
- D. A dedicated radio configured for background scanning can detect rogue devices on all other channels in its configured frequency band

Answer: CD

NEW QUESTION 3

Which two configurations are compatible for Wireless Single Sign-On (WSSO)? (Choose two.)

- A. A VAP configured for captive portal authentication
- B. A VAP configured for WPA2 or 3 Enterprise
- C. A VAP configured to authenticate locally on FortiGate
- D. A VAP configured to authenticate using a radius server

Answer: BD

Explanation:

In the SSID choose WPA2-Enterprise authentication.

WSSO is RADIUS-based authentication that passes the user's user group memberships to the FortiGate.

NEW QUESTION 4

Which of the following is a requirement to generate analytic reports using on-site FortiPresence deployment?

- A. SQL services must be running
- B. Two wireless APs must be sending data
- C. DTLS encryption on wireless traffic must be turned off
- D. Wireless network security must be set to open

Answer: A

NEW QUESTION 5

What type of design model does FortiPlanner use in wireless design project?

- A. Architectural model
- B. Predictive model
- C. Analytical model
- D. Integration model

Answer: B

NEW QUESTION 6

Where in the controller interface can you find a wireless client's upstream and downstream link rates?

- A. On the AP CLI, using the cw_diag ksta command
- B. On the controller CLI, using the diag wireless-controller wlac -d sta command
- C. On the AP CLI, using the cw_diag -d sta command
- D. On the controller CLI, using the WiFi Client monitor

Answer: A

NEW QUESTION 7

Which two statements about distributed automatic radio resource provisioning (DARRP) are correct? (Choose two.)

- A. DARRP performs continuous spectrum analysis to detect sources of interference
- B. It uses this information to allow the AP to select the optimum channel.
- C. DARRP performs measurements of the number of BSSIDs and their signal strength (RSSI). The controller then uses this information to select the optimum channel for the AP.
- D. DARRP measurements can be scheduled to occur at specific times.
- E. DARRP requires that wireless intrusion detection (WIDS) be enabled to detect neighboring devices.

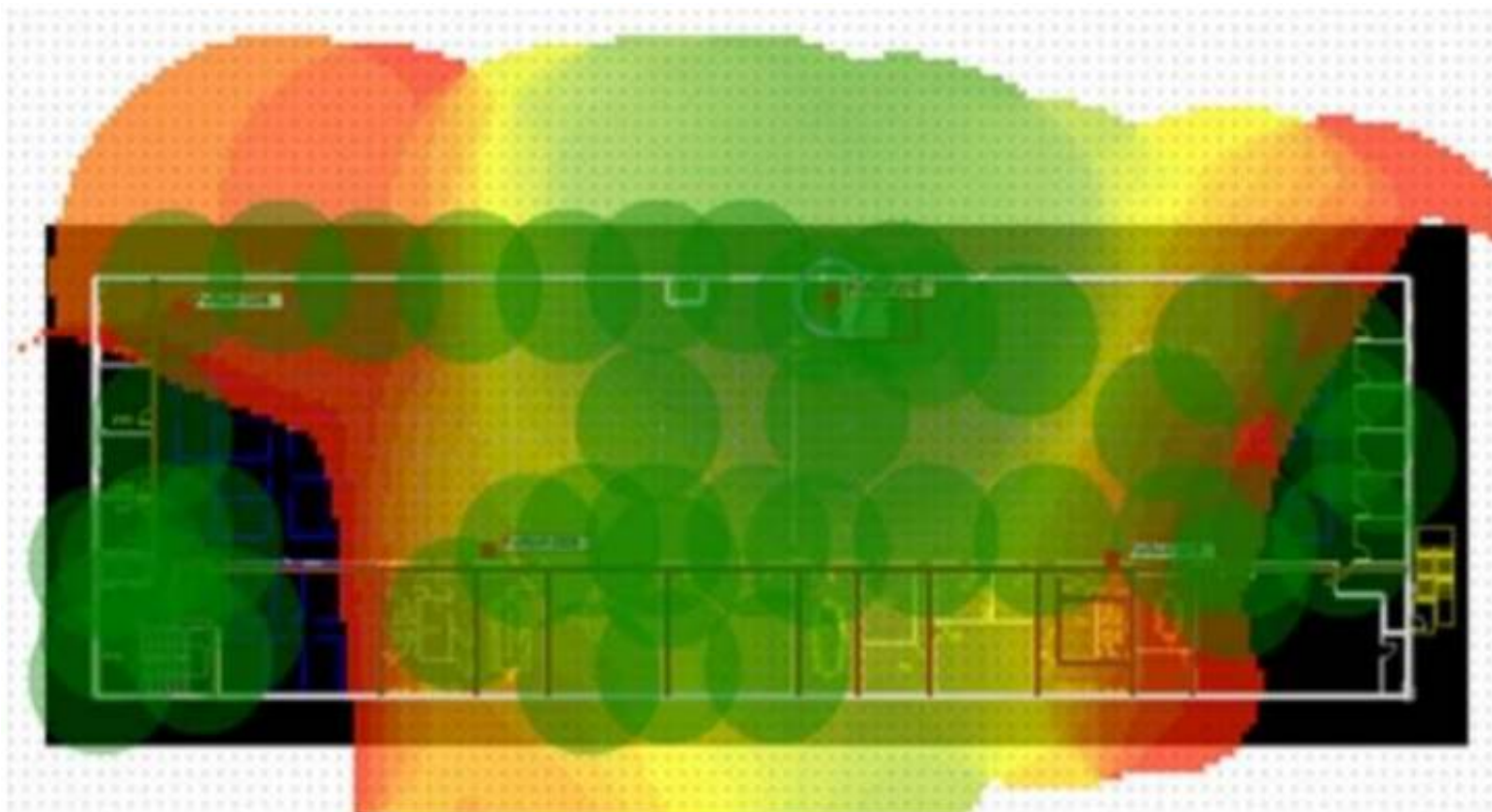
Answer: BC

Explanation:

According to Fortinet training: "When using DARRP, the AP selects the best channel available to use based on the scan results of BSSID/receive signal strength (RSSI) to AC" and "To set the running time for DARRP optimization, use the following CLI command within the wireless controller setting: set darrp-optimize {integer}. Note that DARRP doesn't do continuous spectrum analysis..."

NEW QUESTION 8

Refer to the exhibit.



If the signal is set to -68 dB on the FortiPlanner site survey reading, which statement is correct regarding the coverage area?

- A. Areas with the signal strength equal to -68 dB are zoomed in to provide better visibility
- B. Areas with the signal strength weaker than -68 dB are cut out of the map
- C. Areas with the signal strength equal or stronger than -68 dB are highlighted in multicolor
- D. Areas with the signal strength weaker than -68 dB are highlighted in orange and red to indicate that no signal was propagated by the APs.

Answer: D

NEW QUESTION 9

As standard best practice, which configuration should be performed before configuring FortiAPs using a FortiGate wireless controller?

- A. Create wireless LAN specific policies
- B. Preauthorize APs
- C. Create a custom AP profile
- D. Set the wireless controller country setting

Answer: D

NEW QUESTION 10

Which statement describes FortiPresence location map functionality?

- A. Provides real-time insight into user movements
- B. Provides real-time insight into user online activity
- C. Provides real-time insight into user purchase activity
- D. Provides real-time insight into user usage stats

Answer: A

NEW QUESTION 10

When using FortiPresence as a captive portal, which two types of public authentication services can be used to access guest Wi-Fi? (Choose two.)

- A. Social networks authentication
- B. Software security token authentication
- C. Short message service authentication
- D. Hardware security token authentication

Answer: AC

NEW QUESTION 11

.....

Thank You for Trying Our Product

We offer two products:

1st - We have Practice Tests Software with Actual Exam Questions

2nd - Questions and Answers in PDF Format

NSE6_FWF-6.4 Practice Exam Features:

- * NSE6_FWF-6.4 Questions and Answers Updated Frequently
- * NSE6_FWF-6.4 Practice Questions Verified by Expert Senior Certified Staff
- * NSE6_FWF-6.4 Most Realistic Questions that Guarantee you a Pass on Your First Try
- * NSE6_FWF-6.4 Practice Test Questions in Multiple Choice Formats and Updates for 1 Year

100% Actual & Verified — Instant Download, Please Click
[Order The NSE6_FWF-6.4 Practice Test Here](#)