

## 200-901 Dumps

# Developing Applications and Automating Workflows using Cisco Core Platforms (DEVASC)

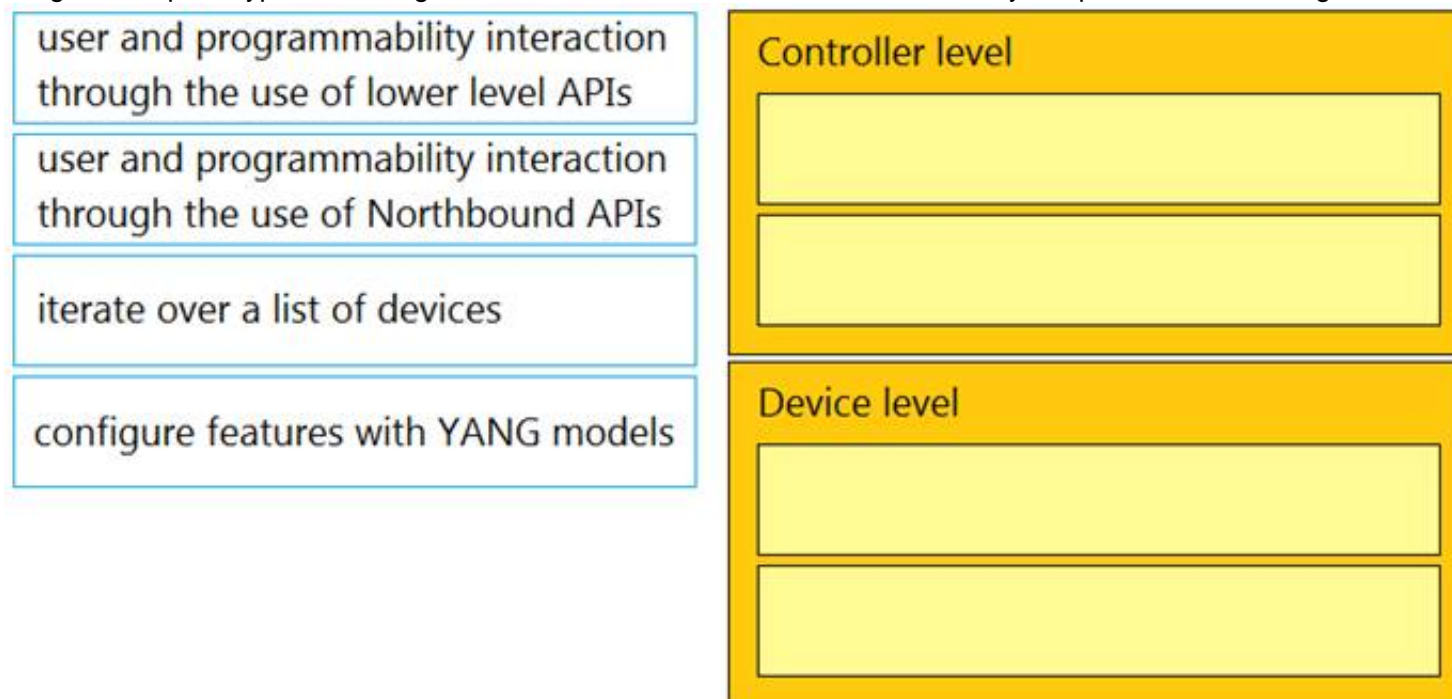
<https://www.certleader.com/200-901-dumps.html>



### NEW QUESTION 1

- (Exam Topic 2)

Drag and drop the types of management from the left onto the levels at which they are performed on the right.



- A. Mastered
- B. Not Mastered

**Answer:** A

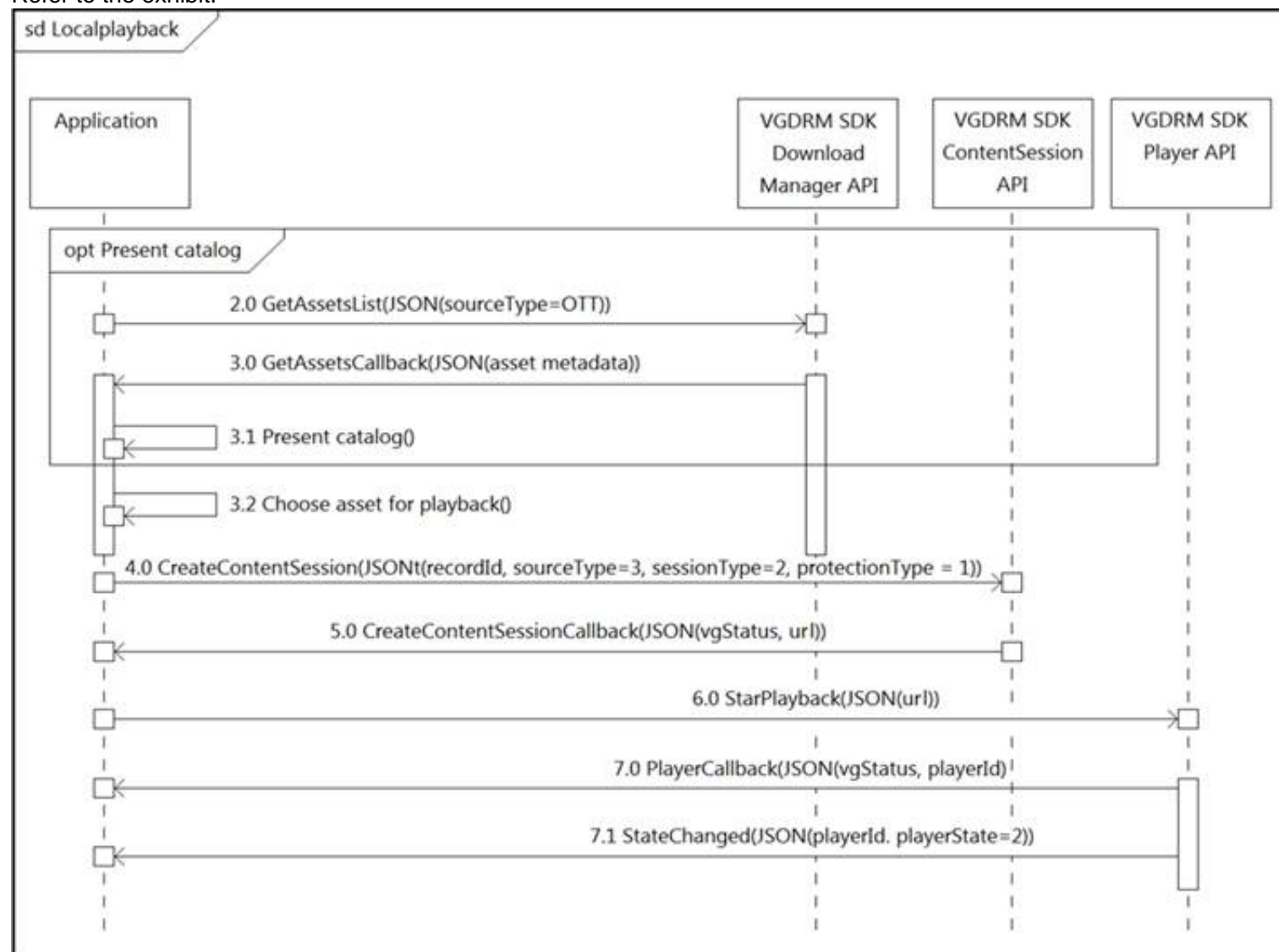
#### Explanation:

Graphical user interface, application Description automatically generated with medium confidence

### NEW QUESTION 2

- (Exam Topic 2)

Refer to the exhibit.



What do all the calls shown in the sequence diagram have in common?

- A. All the calls are optional.
- B. All the calls are asynchronous.
- C. All the calls are synchronous.
- D. All the calls depend on the catalog.

**Answer:** D

### NEW QUESTION 3

- (Exam Topic 2)

Which application should be used to externally access all applications deployed in the same host machine with a single public IP address and port, when each application listens on different local ports?

- A. reverse proxy
- B. load balancer
- C. DNS
- D. firewall

**Answer:** D

#### NEW QUESTION 4

- (Exam Topic 2)

Devices

## Get Device Count

**Operation Id:** `getDeviceCount`

**Description:** Returns the count of network devices based on the filter criteria by management IP address, mac address, hostname and location name

GET

/dna/intent/api/v1/network-device/count

## Request Parameters

## Responses

**Status:** 200

The request was successful. The result is contained in the response body.

Schema Definition

Example Body

CountResult

response: integer

version: string

+ -

Refer to the exhibit. Drag and drop the code snippets from the bottom onto the blanks in the code to construct a request to find the Cisco DNA Center switch count. Not all options are used.

```
curl -L --request  \
--  https://dna/intent/api/v1/network-device/  \
--header '  : application/json' \
--header 'Accept: application/json'
```

url	network	count
POST	GET	Content-Type

- A. Mastered
- B. Not Mastered

**Answer:** A

**Explanation:**

```
curl -L --request GET \
--url https://dna/intent/api/v1/network-device/ count \
--header 'Content-Type: application/json' \
--header 'Accept: application/json'
```

url	network	count
POST	GET	Content-Type

#### NEW QUESTION 5

- (Exam Topic 2)

Drag and drop the code from the bottom onto the box where the code is missing in the Python script to complete a function to return all the clients on a network by using the Cisco Meraki Dashboard API. Not all options are used.

```
import requests
import json
url = 'https://dashboard.meraki.com/api/v0/'
headers = {' ': '0110c4e1b8a1',
           'Content-Type': ' '}
orgs = json.loads(requests.get(url+'organizations', headers=headers).text)

for org in orgs:
    nets = json.loads(requests.get(url+'organizations/'+org['id']+'/networks',
    headers=headers).text)
    for net in nets:
        clients = json.loads(requests.get(
            url+ ' /'+net['id']+' / ',
            headers=headers).text)
        for client in clients:
            print(client['ip'])
```

client	application/json
application/xml	clients
X-Cisco-Meraki-API-Key	networks
Authorization: Bearer	

- A. Mastered
- B. Not Mastered

Answer: A

Explanation:

```
import requests
import json
url = 'https://dashboard.meraki.com/api/v0/'
headers = {'X-Cisco-Meraki-API-Key': '0110c4e1b8a1',
           'Content-Type': 'application/json '}
orgs = json.loads(requests.get(url+'organizations', headers=headers).text)

for org in orgs:
    nets = json.loads(requests.get(url+'organizations/'+org['id']+'/networks',
    headers=headers).text)
    for net in nets:
        clients = json.loads(requests.get(
            url+ 'clients /'+net['id']+' networks ',
            headers=headers).text)
        for client in clients:
            print(client['ip'])
```

client	
application/xml	
Authorization: Bearer	



**NEW QUESTION 6**

- (Exam Topic 2)

A company wants to accelerate the adoption of technologies that will simplify its operations. Staff have different skill levels and are looking for a single site to find easy-to-consume beginner, intermediate, and advanced multidomain use cases. Which site should be used?

- A. DevNet Ecosystem Exchange
- B. DevNet Automation Exchange
- C. DevNet Creations
- D. DevNet Support Forum

**Answer:** D

**NEW QUESTION 7**

- (Exam Topic 2)

What are two functions of a routing table on a network device? (Choose two.)

- A. It lists entries more than two hops away.
- B. It lists the routes to a particular destination.
- C. It lists the routes to drop traffic.
- D. It lists hosts that are one hop away.
- E. It lists the static and dynamic entries.

**Answer:** BE

**NEW QUESTION 8**

- (Exam Topic 2)

Before which process is code review performed when version control is used?

- A. Branching code
- B. Merge of code
- C. Checkout of code
- D. Committing code

**Answer:** D

**NEW QUESTION 9**

- (Exam Topic 2)

What are two considerations when selecting the "best route" for a network device to reach its destination? (Choose two.)

- A. MAC address
- B. metrics
- C. administrative distance
- D. IP address
- E. subnet mask

**Answer:** BC

**NEW QUESTION 10**

- (Exam Topic 2)

```
GET getNetworkHttpServers
https://api.meraki.com/api/v0/networks/:networkId/httpServers
List the HTTP servers for a network

AUTHORIZATION
API Key

This request is using an authorization helper from collection Meraki Dashboard
API
HEADERS
Accept
*/*
```

Refer to the exhibit. A developer is creating a Python script to obtain a list of HTTP servers on a network named office\_east by using the Cisco Meraki API. The request has these requirements:

- Must time out if the response is not received within 2 seconds.
- Must utilize client certificates and SSL certificate verification.
- Must utilize basic authentication that uses a username of admin and a password of cisco.
- Must save the response to an object named response.

Drag and drop the code snippets from the bottom onto the blanks in the code to meet the requirements. Not all options are used.

```
import requests
from requests.auth import HTTPBasicAuth
network = 'office east'
url = 'https://api.meraki.com/api/v0/networks/{}/httpServers'.format (network)
[ ] = requests.get(url=url, headers={ 'Accept': '*/*'},
verify='/etc/pki/tls/certs/ca.pem',
timeout= [ ] ,
[ ] =('/etc/pki/tls/certs/client.pem',
'/etc/pki/tls/certs/client.key'),
auth= [ ] ('admin', 'cisco'))
response.status_code
```

token	response	2
HTTPTokenAuth	HTTPBasicAuth	cert

- A. Mastered
- B. Not Mastered

**Answer:** A

**Explanation:**

Text Description automatically generated

Reference:

<https://community.cisco.com/t5/networking-blogs/authenticating-rest-api-calls-to-dnac-getting-started/ba-p/3658>

**NEW QUESTION 10**

- (Exam Topic 2)

Which API must an engineer use to change a netmask on a Cisco IOS XE device?

- A. Meraki
- B. RESTCONF/YANG
- C. SD-WAN
- D. DNAC

**Answer:** B

**NEW QUESTION 11**

- (Exam Topic 2)

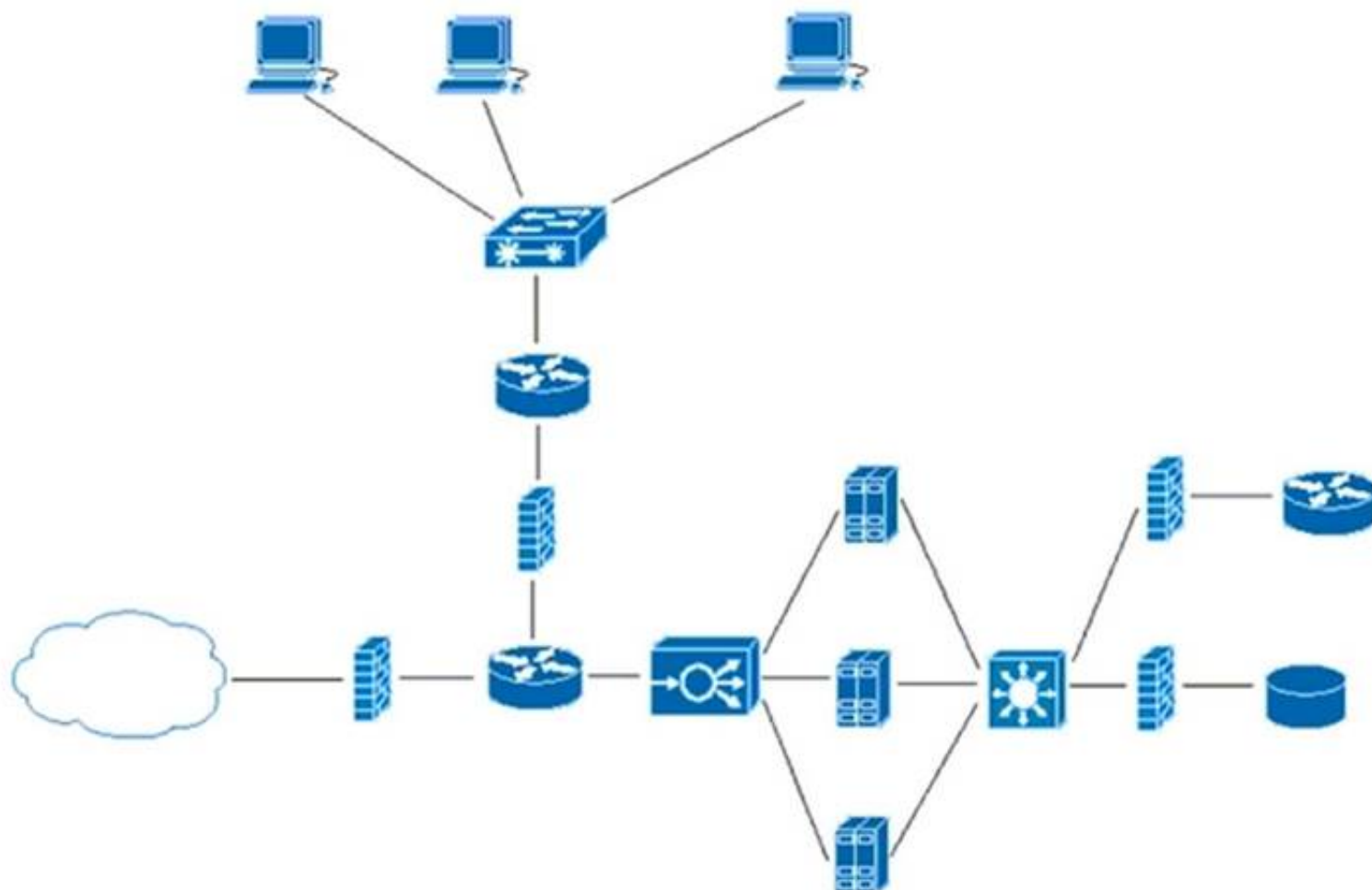
What is a benefit of organizing code into modules?

- A. improves overall performance
- B. reduces the length of code
- C. enables code to be multifunctional
- D. enables the reuse of code

**Answer:** D

**NEW QUESTION 15**

- (Exam Topic 2)



Refer to the exhibit. What does the load balancer enable in the network topology?

- A. hosted application to access Internet services
- B. external requests to be routed to the application servers
- C. workstations to access the Internet
- D. application to access the database server

**Answer: C**

#### NEW QUESTION 17

- (Exam Topic 2)

What are two use cause where webhooks are effective? (Choose two.)

- A. Close a session with a web server after a specific amount of time.
- B. Filter out information from a response to an API call
- C. Change the response format or content type of an API call.
- D. Inform a previously defined chat channel after a deployment fate.
- E. Send an email to a customer of an online store after payment is complete

**Answer: DE**

#### NEW QUESTION 21

- (Exam Topic 2)

A new application is being developed that must be hardware independent. The application includes an administrative component which is accessed using a Windows desktop GUI. Installation and management of the environment must be fully automated. Which application deployment type meets the requirements?

- A. bare metal
- B. virtual Python environment
- C. container
- D. virtual machine

**Answer: C**

#### NEW QUESTION 24

- (Exam Topic 2)

Drag and drop the code from the bottom onto the box where the code is missing in the Bash script to complete the missing assignment.

```
#!/bin/bash

= 'date +%b-%d-%y'

= /home/usr/path/backup-$BACKUPTIME.tar.gz

= /home/usr/path/data_folder

tar -cpzf $DESTINATION $SOURCEFOLDER
```

BACKUPTIME

SOURCEFOLDER

DESTINATION

- A. Mastered  
B. Not Mastered

Answer: A

Explanation:

```
#!/bin/bash

BACKUPTIME = 'date +%b-%d-%y'

DESTINATION = /home/usr/path/backup-$BACKUPTIME.tar.gz

SOURCEFOLDER = /home/usr/path/data_folder

tar -cpzf $DESTINATION $SOURCEFOLDER
```

BACKUPTIME

SOURCEFOLDER

DESTINATION

#### NEW QUESTION 26

- (Exam Topic 2)  
Refer to the exhibit.

### List Messages

Lists all messages in a room. Each message will include content attachments if present.

The list sorts the messages in descending order by creation date.

Long result sets will be split into pages.

**GET** /v1/messages

**Query Parameters**

**roomId**  
string *Required*  
List messages in a room, by ID.

**parentId**  
string  
List messages with a parent, by ID.

Try it Example

Request Response

```
https://webexapis.com/v1/messages?roomId=Y2lzY29zcGFyazovL3VzL1JPT00vYmJjZWl1Y29zcGFyazovL3VzL01FU1NBR0UvZW12TlZjAAtN2RhMS0xMWU5LTg2NTgtZTkzYzNiODZjZmFm&mentionedPeople=Y2lzY29zcGFyazovL3VzL1BFT1BMRS8yNDlmNzRkOS1kYjhhLTQzY2EtODk2Yi04NzllZDI0MGFjNTM&before=2016-04-21T19:01:55.966Z&beforeMessage=Y2lzY29zcGFyazovL3VzL01FU1NBR0UvOTJkYjNiZTAiNDNiZC0xMWU2LTlhZTkzZGQ1YjNkZmM1NjVj&max=100
```

A developer needs to automatically retrieve all of the messages of a Webex room with the roomId of HY2l2Y292cGFyazovL3Vz397748444YjU5NjAtNTk0ZJ0xMWVhLTk0Mj". Using the Webex API documentation shown, drag and drop the code snippets from below onto the code to complete the Python script to list all of the messages in the room. Not all options are used.





- A. Mastered
- B. Not Mastered

**Answer:** A

**Explanation:**

Graphical user interface Description automatically generated with medium confidence

**NEW QUESTION 31**

- (Exam Topic 2)

An engineer must configure Cisco Nexus devices and wants to automate this workflow. The engineer enables the Cisco NX-OS REST API to configure the devices by using an Ansible playbook. Before running the code, which resource must be used to verify that the code works correctly?

- A. Cisco NX-OS SDK
- B. Cisco Learning Labs
- C. Cisco Code Exchange
- D. Cisco Modeling Labs

**Answer:** A

**NEW QUESTION 33**

- (Exam Topic 2)

Refer to the exhibit.



OWASP threat does this example demonstrate?

- A. Broken access control
- B. SQL injection
- C. Man-in-the-middle
- D. Cross-site-scripting

**Answer:** D

**NEW QUESTION 38**

- (Exam Topic 2)

What is a benefit of model-driven programmability?

- A. It addresses the static architecture of traditional networks being decentralized and complex.
- B. By modeling data, it ensures that vast quantities of data are usable for monitoring.
- C. It provides a programmatic and standards-based way of writing configurations to any network device.
- D. It simplifies management and operations by decoupling the networking hardware from its control mechanism.

**Answer:** D

**NEW QUESTION 40**

- (Exam Topic 2)

Refer to the exhibit.

**Local File Attachments**

To send local file attachments, simply post a message by including your access token in the Authorization header and the path to your local file with the files parameter. Optionally, you can also include a plain-text message with the attachment by using the text parameter. When uploading files directly from your local filesystem, your request will need to be a multipart/form-data request rather than JSON

```
curl --request POST \  
  --form "files=@/home/desktop/example.png;type=image/png" \  
  --form "roomId=Y21zY2....." \  
  --form "text=example attached" \  
https://webexapis.com/v1/messages
```

A developer needs to upload a local file by using the REST API. The developer gathers information according to the documentation and sends the request by using the cURL command in the exhibit but gets an error code. Which action should be followed to get valid response?

- A. change content type as JSON
- B. add the authorization header with the access token
- C. add a username-password combination to request command
- D. change request method as GET

**Answer:** B**Explanation:**Reference: <https://developer.webex.com/docs/api/basics>**NEW QUESTION 41**

- (Exam Topic 2)

Refer to the exhibit.

```
1 #/bin/bash  
2  
3 curl https://cisco devnet.com/devnet-0.13.tar.gz -o /tmp/devnet.tar.gz  
4 tar -zxvf /tmp/devnet.tar.gz  
5 mkdir /tmp/devnet && pushd /tmp/devnet  
6  
7 ./configure && make && make install  
8  
9 systemctl enable devnet  
10 systemctl start devnet
```

A network engineer works on a Cisco DevNet application that is available for download on the Cisco DevNet website. The engineer prepares a bash script to automate operations that relate to the application. Which workflow is being automated in the bash script?

- A. compilation and configuration of the Cisco DevNet application so that it must be started manually
- B. compilation, installation, and configuration of the Cisco DevNet application so that it starts automatically
- C. compilation and installation of the Cisco DevNet application for an autonomous deployment model
- D. installation and configuration of the Cisco DevNet application so that it starts manually

**Answer:** B**NEW QUESTION 42**

- (Exam Topic 2)

What is used in JSON to represent a Python Tuple?

- A. Object
- B. Array
- C. Dict
- D. Collection

**Answer:** B**NEW QUESTION 47**

- (Exam Topic 2)

Several teams at a company are developing a new CRM solution to track customer interactions with a goal of improving customer satisfaction and driving higher revenue. The proposed solution contains these components:

- MySQL database that stores data about customers
- HTML5 and JavaScript UI that runs on Apache
- REST API written in Python

What are two advantages of applying the MVC design pattern to the development of the solution? (Choose two.)

- A. to enable multiple views of the same data to be presented to different groups of users
- B. to provide separation between the view and the model by ensuring that all logic is separated out into the controller
- C. to ensure data consistency, which requires that changes to the view are also made to the model
- D. to ensure that only one instance of the data model can be created
- E. to provide only a single view of the data to ensure consistency

Answer: BD

#### NEW QUESTION 51

- (Exam Topic 2)

Refer to the exhibit.

<pre> module ietf-ip {   namespace "urn:ietf:params:xml:ns:yang:ietf-ip";   prefix ip;   import ietf-interfaces {     prefix if;   }   augment "/if:interfaces/if:interface" {     container ipv4 {       leaf enabled {         type boolean;         default true;       }       list address {         key "ip";         leaf ip {           type inet:ipv4-address-no-zone;         }         choice subnet {           mandatory true;           leaf prefix-length {             type uint8 {               range "0..32";             }         }         leaf netmask {           type yang:dotted-quad;         }       }     }   } } </pre>	<pre> module ietf-interfaces {   namespace "urn:ietf:params:xml:ns:yang:ietf-interfaces";   prefix if;   typedef interface-ref {     type leafref {       path "/if:interfaces/if:interface/if:name";     }   }   container interfaces {     list interface {       key "name";       leaf name {         type string;       }       leaf description {         type string;       }       leaf type {         type identityref {           base interface-type;         }         mandatory true;       }       leaf enabled {         type boolean;         default "true";       }     }   } } </pre>
---	--

Which JSON snippet configures a new interface according to YANG model?

A)

```

{"ietf-interfaces:interface": {
  "name": "Loopback100",
  "enabled": true,
  "ietf-ip:ipv4": {
    "address": [
      {
        "ip": "10.255.254.1",
        "netmask": "255.255.255.0"
      }
    ]
  }
}

```

B)

```

{"ietf-interfaces": {
  interface": {
    "name": "Loopback100",
    "enabled": true,
    "ietf-ip": {
      ipv4": {
        "address": [
          {
            "ip": "10.255.254.1",
            "netmask": "255.255.255.0"
          }
        ]
      }
    }
  }
}

```

C)

```

{
  "interface" {
    "name": "Loopback100",
    "enabled": true,
    "ipv4": {
      "address": [
        {
          "ip": "10.255.254.1",
          "netmask": "255.255.255.0"
        }
      ]
    }
  }
}

```

D)



```
“ietf-interfaces:interface”: {  
  “name”: “Loopback100”,  
  “enabled”: true,  
  “ietf-ip:ipv4:address”: [  
    {  
      “ip”: “10.255.254.1”,  
      “netmask”: “255.255.255.0”  
    } ]  
}
```

- A. Option A
- B. Option B
- C. Option C
- D. Option D

**Answer:** B

#### NEW QUESTION 56

- (Exam Topic 2)

Which tool allows changes to the configuration management toolset to be tested?

- A. Cisco VIRL
- B. NAPALM
- C. Ansible
- D. pyATS

**Answer:** D

#### NEW QUESTION 57

- (Exam Topic 2)

Refer to the exhibit.

```
diff --git a/ciscoaxl/axl.py b/ciscoaxl/axl.py  
index bc7727e..d66ef4d 100644  
--- a/ciscoaxl/axl.py  
+++ b/ciscoaxl/axl.py  
@@ -99,7 +99,7 @@ class axl(object):  
     :return: result dictionary  
     """  
     try:  
-         return self.client.executeSQLUpdate(query)  
+         return self.client.executeSQLUpdate(query) ['return']  
     except Fault as e:  
         return e  
  
diff --git a/setup.py b/setup.py  
index df79ef4..1470b05 100644  
--- a/setup.py  
+++ b/setup.py  
@@ -5,7 +5,7 @@ with open("README.md", "r") as fh:  
  
    setup(  
        name="ciscoaxl",  
-        version="0.14",  
+        version="0.141",  
        author="User 1",  
        author_email="user1@example.com",  
        description="Cisco CUCM AXL Library. Simple to use.",
```

Which two files are being edited in the unified diff? (Choose two.)

- A. README.md
- B. setup.py
- C. axl.py
- D. ciscoaxl.py
- E. index.py

**Answer:** BC



## NEW QUESTION 62

- (Exam Topic 1)

Refer to the exhibit.

### List Messages

Lists all messages in a room. Each message will include content attachments if present.

The list sorts the messages in descending order by creation date.

Long result sets will be split into [pages](#).

**GET** /v1/messages

### Query Parameters

**roomId**  
string **Required**  
List messages in a room, by ID.

**mentionedPeople**  
array  
List messages with these people mentioned, by ID. Use me as a shorthand for the current API user.

**before**  
string  
List messages sent before a date and time.

**beforeMessage**  
string  
List messages sent before a message, by ID.

**max**  
number  
Limit the maximum number of messages in the response.  
Default:

Try it

Example

GET

/v1/messages{?roomId,mentionedPeople,before,beforeMessage}

### Header

Authorization ☒ Use personal access token

Bearer .....

*This limited-duration personal access token is hidden for your security.*

### Query Parameters

**roomId**  
**Required**  
e.g. Y2lzY29zcGFyazovL3VzL1IPT00vYmJj

**mentionedPeople**  
e.g. Y2lzY29zcGFyazovL3VzL1BFT1BMR56

**before**  
e.g. 2016-04-2Tf9:01:55:966Z

**beforeMessage**  
e.g. Y2lzY29zcGFyazovL3VzL1FU1NBROL

**max**  
e.g. 100

Run

```
bash-3.2$ curl -H "Content-Type: application/json" -H "Authorization: Fj2zzzykEa091ic9GK2j8LtE1HklHklH6oRHPQdw1Pat60i7ndtHHnWzL2b5pqMg14Kk_B9EI59isacLy7-NarA02n9H-tGgt-SxQ39iDejgcs" -i -X POST -d "{ \"roomId\": \"Y2geK53sjEknosrC7SwQ5ZGL99pHgIuScB7DfNvU8Xx4wDKLiPORcEkryAnM3QmK9LQZsP0G4\", \"text\": \"test2\" }" https://api.ciscospark.com/v1/messages

HTTP/1.1 401 Unauthorized
Via: 1.1 linkerd
TrackingID: ROUTER_5E0FDC8C-EB6F-01BB-00EF-806BF1BD00EF
Date: Sat, 04 Jan 2020 00:30:04 GMT
Server: Redacted
Content-Length: 267
Content-Type: application/json
Strict-Transport-Security: max-age=63072000; includeSubDomains; preload

{"message": "The request requires a valid access token set in the Authorization request header.", "errors": [{"description": "The request requires a valid access token set in the Authorization request header."}], "trackingId": "ROUTER_5E0FDC8C-EB6F-01BB-00EF-806BF1BD00EF"}

bash-3.2$
```

A developer is troubleshooting an API with the given API with the given API documentation and cURL command. What is the cause of this problem?

- A. The user is not allowed to post messages from their account
- B. The request body is missing or incomplete
- C. The API token specified is expired
- D. The authorization header is missing or incomplete

**Answer: C**

## NEW QUESTION 65

- (Exam Topic 1)

Refer to the exhibit.

For CLI commands that support XML, the `clid()` method returns JSON output. An exception is thrown when XML is not used. Executes CLI commands. Takes CLI command string and returns show command output in a JSON form.

“

*Note: The “clid” API can be useful when searching the output of show commands using JSON tools as shown in the example.*

## PYTHON

```
Example:
>>> import json
>>> from cli import *
>>> jversion = json.loads(clid("show
version"))
>>> jversion['bios_ver_str']
'08.06'
```

### Arguments:

- `cmd`: Single CLI command or a batch of CLI commands. Delimiter for multiple CLI commands is a space followed by a semicolon. Configuration commands must be in a fully qualified form.

### Returns:

- string: JSON-formatted output of show commands.

```
>>> from cli import *
>>> import json

>>>
>>> cli('configure terminal ; interface loopback 5 ; no shut')
''
>>> intflist=json.loads(clid('show interface brief'))
>>> i=0
>>> while i < len (intflist['TABLE_interface']['ROW_interface']):
...     intf=intflist['TABLE_interface']['ROW_interface'][i]
...     i=i+1
...     if intf['state'] == 'up':
...         print intf['interface']
```

The python interpreter and the Cisco python SDK are available by default in the Cisco NX-OS software. The SDK documentation shows how the `cild()` API can be used when working with working with JSON and XML. What are two effect of running the script? (Choose two.)

- configure interlace loopback 5
- issue shutdown on interface loopback 5
- show only the interfaces In the up status
- show only the interfaces in admin shut status
- show details for the TABLE interface

**Answer:** AC

### Explanation:

Reference:

[https://www.cisco.com/c/en/us/td/docs/switches/datacenter/nexus9000/sw/7-x/programmability/guide/b\\_Cisco\\_](https://www.cisco.com/c/en/us/td/docs/switches/datacenter/nexus9000/sw/7-x/programmability/guide/b_Cisco_)

## NEW QUESTION 70

- (Exam Topic 1)

What are two benefit of managing network configuration via APIs? (Choose two.)

- configuration on devices becomes less complex
- more security due to locking out manual device configuration
- increased scalability and consistency of network changes
- eliminates the need of legacy management protocols like SNMP
- reduction in network changes performed manually

**Answer:** CE

## NEW QUESTION 73

- (Exam Topic 1)

Refer to the exhibit.

```

1      ---
2  - hosts: {{ router }}
3    gather_facts: true
4    connection: local
5
6    tasks:
7      - ios_command
8        commands:
9          - show run
10         provider: "{{ router_credentials }}"
11         register: config
12
13     - copy:
14       content: "{{ config.stdout[0] }}"
15       dest: "etc/ansible/configs/command_{{ router_hostname }}.txt
16     ...

```

What is the effect of this Ansible playbook on an IOS router?

- A. A new running configuration is pushed to the IOS router.
- B. The current running configuration of the IOS router is backed up.
- C. The start-up configuration of the IOS router is copied to a local folder.
- D. A new start-up configuration is copied to the IOS router.

**Answer:** B

#### NEW QUESTION 74

- (Exam Topic 1)

Drag and drop the functionalities from the left onto correct networking devices on the right.

ports are different broadcast domain by default	Firewall
ports can be in the same broadcast domain	Load Balancer
uses traffic inspection to make routing decisions	Router
blocks networks traffic by default	Switch

- A. Mastered
- B. Not Mastered

**Answer:** A

#### Explanation:

1 – D, 2 – C, 3 – A, 4 – B

Reference: <https://geek-university.com/ccna/broadcast-domain-explained/>

#### NEW QUESTION 78

- (Exam Topic 1)

What are two characteristics of Bare Metal environments that are related to application deployment? (Choose two.)

- A. Provide the hypervisor to host virtual servers
- B. Specifically designed for container-based workloads.
- C. Provides workloads with access to hardware features
- D. Suitable for legacy application that do not support virtualization
- E. Not compatible with other cloud services such as PaaS or SaaS offerings.

**Answer:** CD

#### NEW QUESTION 80

- (Exam Topic 1)

Before which process is code review performed when version control is used?

- A. committing code



- B. branching code
- C. merge of code
- D. checkout of code

**Answer:** C

**NEW QUESTION 83**

- (Exam Topic 1)

A developer is writing an application that a REST API and the application requires a valid from the API which element of the response is used in the conditional check?

- A. URL
- B. Status code
- C. Link
- D. Body
- E. Headers

**Answer:** B

**NEW QUESTION 86**

- (Exam Topic 1)

Which response status code is used by a RESTful interface to indicate successful execution of a request?

- A. 200
- B. 404
- C. 405
- D. 500

**Answer:** A

**NEW QUESTION 90**

- (Exam Topic 1)

Drag and Drop the GIT commands from the left onto the right that add modified local files to a remote repository. Not all options are used

git push	Git command one
git add .	Git command two
git checkout -b "new branch"	Git command three
git commit -m "this is my edit"	
git pull	

- A. Mastered
- B. Not Mastered

**Answer:** A

**Explanation:**

git add .  
git commit -m "this is my edit" git push

**NEW QUESTION 93**

- (Exam Topic 1)

What is the purpose of a MAC address?

- A. To uniquely identify a router in a LAN
- B. To uniquely identify a network interface in a LAN
- C. To uniquely identify a device on the internet
- D. To uniquely identify a switch in a LAN

**Answer:** B

**NEW QUESTION 98**

- (Exam Topic 1)

Which two concepts describe test-driven development? (Choose two.)

- A. It enables code refactoring.
- B. Write a test before writing code.
- C. Implementation is driven by incremental testing of release candidates.



- D. User acceptance testers development the test requirements.
- E. Tests are created when code is ready for release.

**Answer:** BC

**Explanation:**

[https://www.tutorialspoint.com/software\\_testing\\_dictionary/release\\_candidate.htm](https://www.tutorialspoint.com/software_testing_dictionary/release_candidate.htm)

#### NEW QUESTION 103

- (Exam Topic 1)

Which type of HTTP method is used by the Meraki nad webex teams APIs to send webhook notifications?

- A. HTTP GET
- B. HTTP PUT
- C. HTTP HEAD
- D. HTTP POST

**Answer:** D

**Explanation:**

Reference: <https://meraki.cisco.com/blog/tag/alerts/>

#### NEW QUESTION 106

- (Exam Topic 1)

Which device is used to transport traffic from one broadcast domain to another broadcast domain?

- A. load balancer
- B. layer 2 switch
- C. router
- D. proxy server

**Answer:** C

#### NEW QUESTION 109

- (Exam Topic 1)

Which two statement describe the role of an artifact repository in a CI/CD pipeline? (Choose two.)

- A. An artifact repository allows to compare and merge changes in the source code of files involved in a build process.
- B. An artifact repository is needed only for CI/CD pipeline executed on a public cloud infrastructure.
- C. An artifact repository provides traceability, search, and management of binary files.
- D. An artifact repository is needed only for managing open source software.
- E. An artifact repository stores files needed and generated during the build process.

**Answer:** CE

#### NEW QUESTION 113

- (Exam Topic 1)

Which description of a default gateway is true?

- A. It is a device that receives IP packets that have no explicit next-hop in the routing table.
- B. It is a feature that translates between public and private addresses.
- C. It is a security feature that denies certain traffic.
- D. It is a device that receives Layer 2 frames with an unknown destination address.

**Answer:** A

**Explanation:**

Refe

<https://www.certificationkits.com/cisco-certification/ccna-articles/cisco-ccna-intro-to-routing-basics/cisco-ccna>

#### NEW QUESTION 116

- (Exam Topic 1)

what is an advantage of a version control system?

- A. forces the practice of trunk-based development
- B. prevents over-writing code or configuration files
- C. facilitates resolving conflicts when merging code
- D. ensures that unit tests are written

**Answer:** C

#### NEW QUESTION 121

- (Exam Topic 1)

Which model-driven programmability protocol does Cisco IOS XE Software support?

- A. CORBA

- B. SSH
- C. gNMI
- D. SOAP

Answer: C

Explanation:

Reference:  
[https://www.cisco.com/c/en/us/td/docs/ios-xml/ios/prog/configuration/1610/b\\_1610\\_programmability\\_cg/gnmi\\_](https://www.cisco.com/c/en/us/td/docs/ios-xml/ios/prog/configuration/1610/b_1610_programmability_cg/gnmi_)

NEW QUESTION 126

- (Exam Topic 1)  
What are two advantages of the Model-view-controller software design pattern? (Choose two.)

- A. simplifies network automation
- B. allows for multiple views of the same model
- C. makes code easier to deploy using CI/CD pipelines
- D. reduces need for error handling
- E. separates responsibilities of the code, which makes future modifications easier

Answer: BE

NEW QUESTION 127

- (Exam Topic 1)  
Drag and drop the network automation interfaces from the left onto the transport protocols that they support on the right. Not all options are used.

SSH

HTTP

HTTP/2

HTTPS

gRPC

NETCONF

RESTCONF

- A. Mastered
- B. Not Mastered

Answer: A

Explanation:

SSH

HTTP

HTTP/2

HTTPS

gRPC

HTTP/2

NETCONF

SSH

RESTCONF

HTTPS

NEW QUESTION 128

- (Exam Topic 1)  
Refer to the exhibit.

**URL:** https://<ASA\_IP>/api/access/global/rules

**Method:** POST

**Payload:**

```

{
  "destinationAddress": {
    "kind": "IPv4Address",
    "value": "10.1.1.1"
  },
  "remarks": [ ],
  "active": true,
  "permit": true,
  "sourceAddress": {
    "kind": "IPv4Address",
    "value": "192.168.1.1"
  }
}

```

**Response Status Code:** 400 Bad Request

```

{"messages":[{"level":"Error","code":"JSON-PARSE-ERROR","details":
  "Unexpected character ('\"' (code 34))":

```

What caused the error in this API request?

- A. The API resource does not support the POST operation.
- B. The API resource does not support JSON format payloads.
- C. The submitted JSON payload includes a field that is not supported by the API resources.
- D. The submitted JSON payload has a formatting issue.

**Answer:** D

#### NEW QUESTION 130

- (Exam Topic 1)

Which two statements are true about Cisco UCS manager, Cisco Intersight APIs? (Choose two.)

- A. Cisco Intersight API interactions can be encoded in XML or JSON and require an APIs key in the HTTP header for authentication.
- B. USC Director API interactions can be XML- or JSON-encoded and require an APLs key in the HTTP header for authentication.
- C. UCS manager API interactions are XML-encoded and require a cookie in the method for authentication.
- D. Cisco Intersight uses XML to encoded API interactions and requires an API key pair for authentication.
- E. UCS manager uses JSON to encode API interactions and utilizes Base64-encoded credentials in the HTTP header for authentication.

**Answer:** BC

#### Explanation:

Reference:

[https://www.cisco.com/c/en/us/td/docs/unified\\_computing/ucs/ucs-director/rest-api-getting-started-guide/6-5/cis](https://www.cisco.com/c/en/us/td/docs/unified_computing/ucs/ucs-director/rest-api-getting-started-guide/6-5/cis)

[https://www.cisco.com/c/en/us/td/docs/unified\\_computing/ucs/sw/api/b\\_ucs\\_api\\_book.pdf](https://www.cisco.com/c/en/us/td/docs/unified_computing/ucs/sw/api/b_ucs_api_book.pdf)

#### NEW QUESTION 132

- (Exam Topic 1)

What is a tenet of test-driven development?

- A. write documentation for tests
- B. write tests after adding new blocks of code
- C. write and run tests before writing new code
- D. run tests after writing new code

**Answer:** C

#### NEW QUESTION 136

- (Exam Topic 1)

Refer to the exhibit.

## List Rooms

List rooms.

The `title` of the room for 1:1 rooms will be the display name of the other person.

By default, lists rooms to which the authenticated user belongs.

Long result sets will be split into [pages](#).

**GET** `/v1/rooms`

### Query Parameters



Name	Description
<code>teamId</code> string	List rooms associated with a team, by ID.
<code>type</code> string	List rooms by tape. <i>Possible values: direct, group</i>
<code>sortBy</code> string	Sort results. <i>Possible values: id, lastactivity, created</i>
<code>max</code> number	Limit the maximum number of rooms in the response.
Default: <code>100</code>	

Fill in the blank to complete the query parameter and value so that the result set is returned in reverse chronological order (most recent first) based on when message were entered.

HTTP GET `/v1/rooms` \_\_\_\_\_

- A. Mastered
- B. Not Mastered

Answer: A

Explanation:

HTTP GET `/v1/rooms` `?sortBy=lastactivity`

### NEW QUESTION 141

- (Exam Topic 1)

A function `my_func()` returns True when it executes normally. Which python snippet tests `my_func()`?

- ☒

```
def test_func(self):
    self.assertTrue(my_func())
```
- ☐

```
def test_func(self):
    self.assertRaises(my_func())
```
- ☐

```
def test_func(self):
    self.assertEqual(my_func(), '{true}')
```
- ☐

```
def test_func(self):
    self.assertFalse(my_func())
```

- A. Option A
- B. Option B
- C. Option C
- D. Option D



**Answer:** B

**NEW QUESTION 144**

- (Exam Topic 1)

An application calls a REST API and expects a result set of more than 550 records, but each time the call is made, only 25 are returned. Which feature limits the amount of data that is returned by the API?

- A. pagination
- B. payload limit
- C. rate limiting
- D. service timeouts

**Answer:** A

**NEW QUESTION 147**

- (Exam Topic 1)

When a Cisco IOS XE networking device is configured using RESTCONF, what is the default data-encoding method?

- A. XML
- B. x-form-encoding
- C. YANG
- D. YAML

**Answer:** A

**NEW QUESTION 151**

- (Exam Topic 1)

What is the purpose of a firewall in application deployment?

- A. adds TLS support to an application that does not support it natively
- B. forwards traffic to a pool of instances of the application
- C. provides translation for an application's hostname to its IP address
- D. limits traffic to only ports required by the application

**Answer:** D

**NEW QUESTION 155**

- (Exam Topic 1)

Which two protocols are used to apply a configuration change on a Cisco IOS XE device? (Choose two)

- A. CCX
- B. RESTCONF
- C. NETCONF
- D. HSRP
- E. CDP

**Answer:** BC

**NEW QUESTION 159**

- (Exam Topic 1)

A 401 HTTP response code is returned when calling a REST API. What is the error state identified by this response code?

- A. The server cannot process the request as it has detected an issue in the request syntax or body.
- B. The server accepted the request but the client is not authorized for this content.
- C. The request has not been accepted because it requires authentication.
- D. The server cannot find the requested resource because the path specified is incorrect.

**Answer:** C

**Explanation:**

Reference:

<https://blog.restcase.com/rest-api-error-codes-101/#:~:text=A%20401%20error%20response%20indicates,crede>

**NEW QUESTION 162**

- (Exam Topic 1)

Which platform is run directly using a hypervisor?

- A. Virtual
- B. Bare metal systems
- C. Containers
- D. Applications

**Answer:** C

**NEW QUESTION 164**

- (Exam Topic 1)

What is the benefit of edge computing?

- A. It reduces network latency by moving processing closer to the data source.
- B. It simplifies security as devices and processing are brought closer together
- C. It removes the need for centralized data processing.
- D. It reduces data velocity from devices or other data sources.

**Answer:** A

**Explanation:**

Reference: <https://blogs.cisco.com/networking/time-to-get-serious-about-edge-computing>

#### NEW QUESTION 168

- (Exam Topic 1)

Which is an advantage of using network programmability?

- A. It removes CLI access for devices.
- B. It provides for more scalable and replicable network provisioning.
- C. Manual configuration is faster.
- D. No cloud abstraction occurs.

**Answer:** B

#### NEW QUESTION 170

- (Exam Topic 1)

What is the first development task in test-driven development?

- A. Write code that implements a desired function.
- B. Write a failing test case for a desired function.
- C. Write a passing test case for existing code.
- D. Reverse engineer the code for a desired function.

**Answer:** B

**Explanation:**

Reference:

<https://technologyconversations.com/2013/12/20/test-driven-development-tdd-example-walkthrough/>

#### NEW QUESTION 172

- (Exam Topic 1)

Which two use cases are supported by Meraki APIs? (Choose two.)

- A. Retrieve live streams from a Meraki Camera.
- B. Build a custom Captive Portal for Mobile Apps.
- C. Configure network devices via the Dashboard API.
- D. Build location-aware apps from Wi-Fi and LoRaWAN devices.
- E. Deploy applications onto the devices.

**Answer:** BC

#### NEW QUESTION 174

- (Exam Topic 1)

What are two roles of an artifact repository in a CI/CD pipeline? (Choose two.)

- A. is required for CI/CD pipelines executed on a public cloud infrastructure
- B. is required for managing open source software
- C. stores files needed and generated during the build process
- D. allows for comparing and merging changes in the source code
- E. provides traceability, search, and management of binary files

**Answer:** CE

#### NEW QUESTION 177

- (Exam Topic 1)

Package updates from a local server fail to download. However, the same updates work when a much slower external repository is used. Why are local updates failing?

- A. The update utility is trying to use a proxy to access the internal resource.
- B. The Internet connection is too slow.
- C. The Internet is down at the moment, which causes the local server to not be able to respond.
- D. The server is running out of disk space.

**Answer:** A

#### NEW QUESTION 178

- (Exam Topic 1)

Which line is an example of the start of a chunk from a unified diff?

- A. @@ -90,88 +20191008T1349@@
- B. @@ -20191007T1200 +88,90 @@
- C. @@ -20191007T1200 +20191008T1349@@
- D. @@ -88,10 +88,6 @@

**Answer:** D

**Explanation:**

Reference:

<https://unix.stackexchange.com/questions/252927/what-do-the-numbers-in-the-line-mean-in-output-of-diff>

#### NEW QUESTION 180

- (Exam Topic 1)

A company has written a script that creates a log bundle from the Cisco DNA Center every day. The script runs without error and the bundles are produced. However, when the script is run during business hours, report poor voice quality of phones calls. What explains this behavior?

- A. The application is running in the Voice VLAN and causes delays and jitter in the subnet.
- B. The speed and duplex settings in Cisco DNA Center are set incorrectly, which causes the transfer to be too slow.
- C. 9 The script is written in a low-level programming language where there is no memory safety
- D. This causes a buffer overflow and disruption on the network.
- E. Generating the logs causes the CPU on the network controller to spike, which causes delays in forwarding the voice IP packets.

**Answer:** D

#### NEW QUESTION 184

- (Exam Topic 3)

Which HTTP method is used by webhooks and notifies a listener about an event change?

- A. PUT
- B. POST
- C. PATCH
- D. GET

**Answer:** B

#### NEW QUESTION 189

- (Exam Topic 3)

What is a capability of Ansible playbooks?

- A. They execute scheduled tasks regularly.
- B. They define the state for a device configuration.
- C. They collect SNMP logs from networking devices.
- D. They utilize the target device agent to execute.

**Answer:** A

#### NEW QUESTION 191

- (Exam Topic 3)

What is a characteristic of Waterfall compared to Agile software development method?

- A. Waterfall focuses on continuous improvement, and Agile focuses on the design phase.
- B. Waterfall separates the project development lifecycle into sprints, and Agile does not use cycles.
- C. Waterfall specifies requirements before development begins, and Agile responds flexibly to changes in requirements.
- D. Waterfall uses reviews with step by step approach, and Agile uses a serially phased approach.

**Answer:** C

#### NEW QUESTION 194

- (Exam Topic 3)

A file in a local Git repository has been updated and issued the git add . command. The git diff command has been run to compare the changes to the previous commit, but nothing shows. Which action identifies the problem?

- A. Run the git add . command again in the correct subdirectory to ensure changes added to the staging area.
- B. Run the git commit command before the differences are compared to receive the end state of the code.
- C. Run the git status command to see the differences between current and previous code review stages.
- D. Run the git diff --staged command to compare the code added to the staging area.

**Answer:** D

#### NEW QUESTION 196

- (Exam Topic 3)

Which technology is responsible for resolving a host name to an IP address?

- A. DNS

- B. SNMP
- C. DHCP
- D. NTP

**Answer:** A

#### NEW QUESTION 200

- (Exam Topic 3)

Drag and drop the capabilities from the left onto the Cisco Network Management Platforms that support the capabilities on the right.

receives AI/ML network performance insights, and uses guided issue remediation	Meraki
achieves automation through common policy for data center operations	Cisco DNA Center
establishes an overlay fabric to connect data centers, branches, and campuses through vManage	ACI
provisions and manages networks, networking devices, and clients through a fully managed cloud service	Cisco SD-WAN
supports multivendor networks through Network Element Drivers	NSO

- A. Mastered
- B. Not Mastered

**Answer:** A

**Explanation:**

receives AI/ML network performance insights, and uses guided issue remediation	provisions and manages networks, networking devices, and clients through a fully managed cloud service
achieves automation through common policy for data center operations	receives AI/ML network performance insights, and uses guided issue remediation
establishes an overlay fabric to connect data centers, branches, and campuses through vManage	achieves automation through common policy for data center operations
provisions and manages networks, networking devices, and clients through a fully managed cloud service	establishes an overlay fabric to connect data centers, branches, and campuses through vManage
supports multivendor networks through Network Element Drivers	supports multivendor networks through Network Element Drivers

#### NEW QUESTION 205

- (Exam Topic 3)

A team of developers is responsible for a network orchestration application in the company. The responsibilities also include: developing and improving the application in a continuous manner deployment of the application and management of CI/CD frameworks monitoring the usage and problems and managing the performance improvements Which principle best describes this DevOps practice?

- A. responsible for IT operations
- B. automation of processes
- C. end-to-end responsibility
- D. quality assurance checks

**Answer:** C

#### NEW QUESTION 209

- (Exam Topic 3)



During which step of the CI/CD pipeline for infrastructure automation is code from multiple developers combined to compile and test different components?

- A. integration
- B. deployment
- C. development
- D. testing

**Answer:** A

#### NEW QUESTION 211

- (Exam Topic 3)

Which command reverses the last commit without changing the index file or the working tree position?

- A. git revert HEAD
- B. git reset --hard HEAD~3
- C. git reset --soft HEAD^
- D. git revert

**Answer:** C

#### NEW QUESTION 215

- (Exam Topic 3)

```
HTTPS/1.1 201 Created
Date: Tue, 08 Nov 2020 09:37:27 GMT
Server: example-server
Location: https://example.com/restconf/data\
          example-jukebox/library/dogbreed=Australian%20Cattle%20Dog
Last Modified: Tue 08 Nov 2020 09:37:27 GMT
ETag: "s1878124t4c"
```

Refer to the exhibit. Which RESTCONF request results in this response?

A.

```
GET /restconf/data/example-jukebox:jukebox/library HTTP/1.1
Host: example.com
Content-Type: application/yang-data-json

{
  "Example-jukebox:dogbreed" : [
    {
      "name" : "Australian Cattle Dog"
    }
  ]
}
```

B.

```
CONFIG /restconf/data/example-jukebox:jukebox/library HTTP/1.1
Host: example.com
Content-Type: application/yang-data-json

{
  "Example-jukebox:dogbreed" : [
    {
      "name" : "Australian Cattle Dog"
    }
  ]
}
```

C.

```
PUT /restconf/data/example-jukebox:jukebox/library HTTP/1.1
Host: example.com
Content-Type: application/yang-data-json

{
  "Example-jukebox:dogbreed" : [
    {
      "name" : "Australian Cattle Dog"
    }
  ]
}
```

D.

```
POST /restconf/data/example-jukebox:jukebox/library HTTP/1.1
Host: example.com
Content-Type: application/yang-data+json

{
  "Example:dogbreed" : [
    {
      "name" : "Australian Cattle Dog"
    }
  ]
}
```

**Answer:** D

#### NEW QUESTION 216

- (Exam Topic 3)

Which action do webhooks enable an application to perform?

- A. Increase the request rate limit.
- B. Populate the application with restricted data.
- C. Receive real-time data.
- D. Implement a push model.

**Answer:** D

#### Explanation:

Simplifying the wording: Webhook enables the app to ( push or receive real time) . The clients should receive real time but the app pushes.

#### NEW QUESTION 221

- (Exam Topic 3)

A developer is attempting to retrieve all the messages from a Cisco Webex space. The server responds by sending the first 1,000 messages. The developer must make additional requests to retrieve the rest of the messages. Which API constraint is described in this scenario?

- A. payload limiting
- B. throttling
- C. pagination
- D. rate limiting

**Answer:** C

#### Explanation:

<https://developer.atlassian.com/server/confluence/pagination-in-the-rest-api/>

#### NEW QUESTION 223

- (Exam Topic 3)

```
1 - hosts: nxos_rtr
2   gather_facts: false
3   tasks:
4     - nxos_hsrp:
5       group: "{{ item.group }}"
6       vip: "{{ item.vip }}"
7       priority: 115
8       interface: "{{ item.interface }}"
9       preempt: enabled
10      auth_type: md5
11      auth_string: "s3cuR3"
12      version: 2
13      host: "{{ hostvars['rtr-1a']['ansible_ssh_host'] }}"
14      with_items:
15        - "{{ hsrp_groups }}"
16      delegate_to: "{{ hostvars['srv-1a']['ansible_ssh_host'] }}"
```

Refer to the exhibit. An engineer runs a network that consists of Cisco Nexus devices. The network is distributed between data centers in different locations. The switches are configured using standalone connections and a single point of failure. Which process is being automated by the Ansible playbook?

- A. enabling HSRP on the nxos\_rtr inventory host
- B. enabling HSRP on the rtr-1a inventory host
- C. executing HSRP configuration from the Ansible controller node
- D. executing HSRP configuration from the srv-1a inventory host

**Answer:** B

#### NEW QUESTION 224

- (Exam Topic 3)

Drag and drop the code snippets from the bottom onto the blanks in the code to complete the happy path scenario. Not all options are used.

```
import member as m
import pytest
class Team:
    def __init__(self, name):
        self.name = name
        self.members = []
    def add_member(self, member):
        if member:
            if member not in self.members:
                [ ]
                return True
            else:
                [ ]
        else:
            [ ]

@pytest.fixture
def team():
    team = Team('Reds')
    yield team
    del team

@pytest.fixture
def member():
    member = m.Member('Chris George')
    yield member
    del member

@pytest.mark.usefixtures('team', 'member')
class TestHappyPathAddMemberToTeam:
    def test_add_member_to_team(self, team, member):
        assert [ ] is True
```

return True

team.add\_member(member)

self.members.append(member)

yield member

return False

member.add\_member()

- A. Mastered  
B. Not Mastered

Answer: A

Explanation:

```
import member as m
import pytest
class Team:
    def __init__(self, name):
        self.name = name
        self.members = []
    def add_member(self, member):
        if member:
            if member not in self.members:
                member.add_member()
                return True
            else:
                return False
        else:
            team.add_member(member)

@pytest.fixture
def team():
    team = Team('Reds')
    yield team
    del team

@pytest.fixture
def member():
    member = m.Member('Chris George')
    yield member
    del member

@pytest.mark.usefixtures('team', 'member')
class TestHappyPathAddMemberToTeam:
    def test_add_member_to_team(self, team, member):
        assert yield member is True
```

return True

team.add\_member(member)

self.members.append(member)

yield member

return False

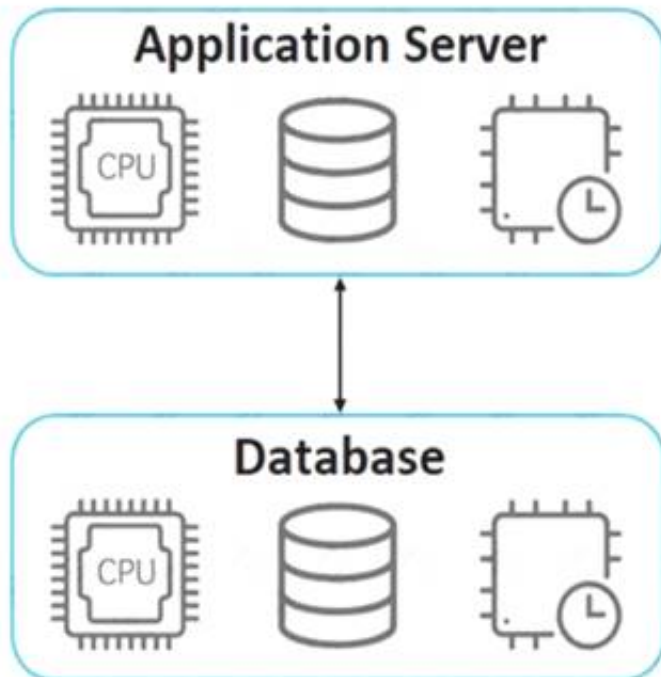
member.add\_member()

## NEW QUESTION 229

- (Exam Topic 3)

Refer to the exhibit.

## Hypervisor



An application must be deployed on a server that has other applications installed. The server resources are to be allocated based on the deployment requirements. The OS for each application must be independent. Which type of deployment is used?

- A. hybrid
- B. virtual machines
- C. containers
- D. bare metal

**Answer:** B

### NEW QUESTION 233

- (Exam Topic 3)

What is a function of the default gateway in a network?

- A. to drop traffic that is destined to the default gateway
- B. to forward traffic to different subnets
- C. to forward traffic to the same subnet
- D. to drop traffic that is not destined to the default gateway

**Answer:** B

### NEW QUESTION 238

- (Exam Topic 3)

Refer to the exhibit.

```
import requests

base_url = f"https://webexapis.com/v1/people"

headers = {
    "Accept": "application/json"
}

person_email = 'customer@company.com'
url = f"{base_url}?email={person_email}"

response = requests.request("GET", url, headers=headers)

if response.status code == 200 :
    print(f"OK - Added {person_email}")
else:
    print(f"ERROR CODE {response.status code}")
```

A collaboration engineer has developed a script to automate the gathering of information by providing the email address of the individual. When the engineer tests the script, a 401 error is received. Which command fixes the script?

- A. Add "Authorization": "Bearer <WEBEX\_TOKEN>" to the headers
- B. Add "Authentication": "Basic <WEBEX\_TOKEN>" in the base\_url after "https://".
- C. Add "<Authorization>:<password>@" in the base\_url after "https://".
- D. Add "Authentication": "Bearer <WEBEX\_TOKEN>" to the headers

**Answer:** A



**NEW QUESTION 240**

- (Exam Topic 3)

Which platform has an API that has the capability to obtain a list of vulnerable software on user devices?

- A. Cisco Advanced Malware Protection
- B. Cisco Umbrella
- C. Cisco Identity Services Engine
- D. Cisco Firepower

**Answer:** A

**NEW QUESTION 245**

- (Exam Topic 3)

Which port does HTTPS use by default?

- A. 433
- B. 443
- C. 803
- D. 883

**Answer:** B

**NEW QUESTION 246**

- (Exam Topic 3)

Which tool provides a testing environment to run tests on network devices and perform network automation scenarios?

- A. Visual Studio Code
- B. Cisco VIRT
- C. pyATS
- D. Cisco Packet Tracer

**Answer:** B

**NEW QUESTION 251**

- (Exam Topic 3)

What is a benefit of a distributed version control system?

- A. encourages users to commit small pieces of work to the system more frequently
- B. ensures that all code meets minimum standards before being committed to the system
- C. allows users to work on the codebase even when not connected to the Internet
- D. ensures that all code is tested before being committed to the system

**Answer:** C

**Explanation:**

Reference: <https://about.gitlab.com/topics/version-control/benefits-distributed-version-control-system/>

**NEW QUESTION 253**

- (Exam Topic 2)

Refer to the exhibit.

```
import requests, sys
from config import user, password

url = "http://restconf.devnet.com:9443/api/running/interfaces"
headers = 
response = requests.put(url, auth=(user, password), headers=headers,
verify=False)
print(response.text)
```

A network engineer wants to use an API to update information about device interfaces. The network devices are deployed in a Cisco DevNet Sandbox and have running interfaces. Which line of code needs to be placed in the snippet where the code is missing?

- A. {'Content-Type': 'application/yang.data+xml', 'Accept': 'application/yang.data+xml'}
- B. {'Content-Type': 'application/yang.data+yaml', 'Accept': 'application/yang.data+yaml'}
- C. {'Content-Type': 'application/restconf.data+json', 'Accept': 'application/ restconf.data+json'}
- D. {'Content-Type': 'application/yang.data+utf8', 'Accept': 'application/ restconf.data+utf8'}

**Answer:** C

**NEW QUESTION 256**

- (Exam Topic 2)

What is a capability of an agentless configuration management system?

- A. It requires managed hosts to have an interpreter for a high-level language such as Python or Ruby.
- B. It requires managed hosts to connect to a centralized host to receive updated configurations.
- C. It uses compiled languages as the basis of the domain-specific language to interface with managed hosts.
- D. It uses existing protocols to interface with the managed host.

**Answer:** D

#### NEW QUESTION 258

- (Exam Topic 3)

Developer is working on a new feature and made changes on a branch named 'branch-413667549a-new'. When merging the branch to production, conflicts occurred. Which Git command must the developer use to recreate the pre-merge state?

- A. git merge -no-edit
- B. git merge -commit
- C. git merge -revert
- D. git merge -abort

**Answer:** D

#### Explanation:

<https://www.git-tower.com/learn/git/ebook/en/command-line/advanced-topics/merge-conflicts>

#### NEW QUESTION 259

- (Exam Topic 3)

A developer is working on a new feature in a branch named 'newfeat123456789' and the current working primary branch is named 'prim987654321'. The developer requires a merge commit during a fast forward merge for record-keeping purposes. Which Git command must be used?

- A. git merge --no-ff newfeat123456789
- B. git commit --no-ff newfeat123456789
- C. git add --commit-ff newfeat123456789
- D. git reset --commit-ff newfeat123456789

**Answer:** A

#### NEW QUESTION 263

- (Exam Topic 3)

```
1 - name: Configure Interfaces
2 with_items: "{{ interfaces }}"
3 netconf_config:
4   <<: *host_info
5   xml: |
6     <config>
7       <interfaces xmlns="urn:ietf:params:xml:ns:yang:ietf-interfaces">
8         <interface>
9           <name>{{ item.interface_type }}{{ item.interface_id }}</name>
10          <description>{{ item.description }}</description>
11          <type xmlns:ianaift="urn:ietf:params:xml:ns:yang:iana-if-type">ianaift:ethernetCsmacd</type>
12          <enabled>true</enabled>
13          <ipv4 xmlns="urn:ietf:params:xml:ns:yang:ietf-ip">
14            <address>
15              <ip>{{ item.ip_address }}</ip>
16              <netmask>{{ item.subnet_mask }}</netmask>
17            </address>
18          </ipv4>
19        </interface>
20      </interfaces>
21    </config>
```

Refer to the exhibit. A network engineer must configure new interfaces on a set of devices and is planning to use an Ansible playbook for the task. All devices support SSH and NETCONF protocol, and the interface variables are unique per device. In which directory are the YAML files including variables hosted to automate the task with the netconf\_config module?

- A. current working directory
- B. host\_vars directory
- C. group\_vars directory
- D. home directory

**Answer:** A

#### NEW QUESTION 264

- (Exam Topic 3)

A group of software developers wants to improve its collaboration with the operations team. The group wants to deliver release-ready code that merges code changes back to the main branch and runs the automated testing as often as possible. Which DevOps concept does this scenario represent?

- A. continuous delivery
- B. version control
- C. continuous integration
- D. continuous deployment

**Answer:** C

#### NEW QUESTION 266

- (Exam Topic 3)

How does edge computing analyze sensitive data in the context of privacy control?

- A. locally instead of sending the data to the cloud for analysis
- B. locally or on the cloud depending on the configuration
- C. all at once by sending the data to the cloud
- D. locally on each node, and then sends the data to the cloud

**Answer:** A

#### NEW QUESTION 271

- (Exam Topic 3)

```
1 import requests
2 from requests.auth import HTTPBasicAuth
3 BASE_URL = 'https://<IP ADDRESS or FQDN>'
4 AUTH_URL = '/dna/system/api/v1/auth/token'
5 TOKEN = '<TOKEN>'
6
7 headers = {'X-Auth-Token': TOKEN, 'Content-Type': 'application/json'}
8
9 DEVICES_COUNT_URL = '/dna/intent/api/v1/network-device/count'
10 DEVICES_URL = '/dna/intent/api/v1/network-device'
11 DEVICES_BY_ID_URL = '/dna/intent/api/v1/network-device/'
12
13 def devices_func(headers):
14     response = requests.get(BASE_URL + DEVICES_COUNT_URL,
15                             headers = headers, verify=False)
16     return response.json()['response']
17
18 def devices_test(headers, query_string_params):
19     response = requests.get(BASE_URL + DEVICES_URL, headers = headers,
20                             params = query_string_params, verify=False)
21     return response.json()['response']
22
23 def devices_info(headers, device_id):
24     response = requests.get(BASE_URL + DEVICES_BY_ID_URL + device_id,
25                             headers = headers, verify=False)
26     return response.json()['response']
27
28 print(devices_func(headers))
29 print(devices_test(headers, {}))
30 print(devices_test(headers, {'hostname': 'CSR1Kv-01.devnet.local'}))
31 response = devices_test(headers, {'platformId': 'C9500-40X'})
32 print(devices_info(headers, response[0]['id']))
```

Refer to the exhibit. An engineer prepares a script to automate workflow by using Cisco DNA Center APIs to display:  
total count of devices

list of the network devices

information of one device with a hostname filter

What is displayed in the final step after the Python script is executed?

- A. information about a device of type C9500-40x.
- B. filtered results by the hostname and the platformId C9500-40X
- C. information about the test devices
- D. list of devices with platformId C9500-40x

**Answer:** B

#### NEW QUESTION 274

- (Exam Topic 3)

What is a benefit of a CI/CD pipeline for infrastructure?

- A. removes manual errors
- B. enables manual steps
- C. removes the need for operations
- D. provides variety for deployments

**Answer:** A

#### NEW QUESTION 277

- (Exam Topic 3)

What is a feature of XML compared to other data formats?

- A. It uses tags to define the structure.
- B. It uses parenthesis for key-value pairs.
- C. It uses indentation to define the structure.
- D. It uses namespaces for list representation.

**Answer:** A

**NEW QUESTION 281**

- (Exam Topic 3)

Which OWASP threat occurs when untrusted data is supplied as input to an interpreter as part of a command or query?

- A. broken authentication
- B. data exposure
- C. injection
- D. cross-site scripting

**Answer: C**

**NEW QUESTION 284**

- (Exam Topic 3)

A developer creates an application that must provide an encrypted connection or API keys. The keys will be used to communicate with a REST API. Which command must be used for the secure connection?

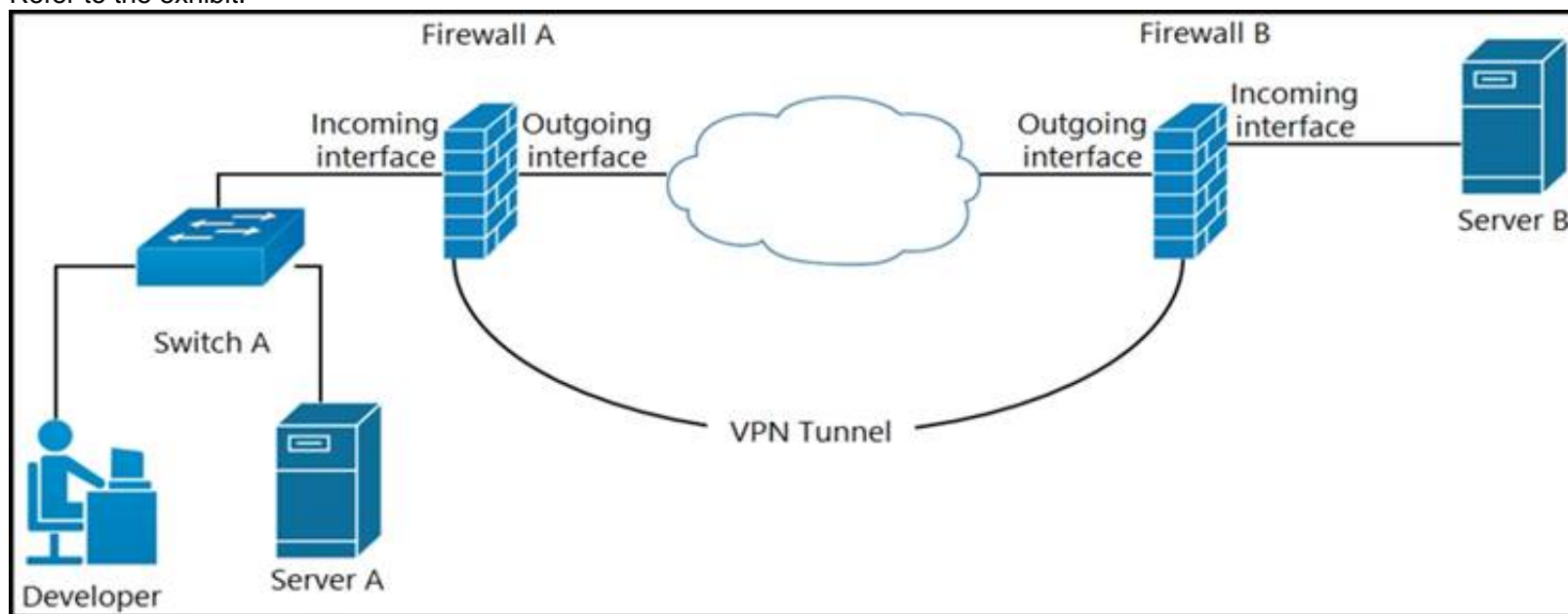
- A. curl-X PUSH 'http://username.app.com/endpoint/?api\_key=12345abcdef'
- B. curl -v 'ftp://username.app.com/endpoint/?api\_key=12345abcdef'
- C. curl -X GET 'https://username.app.com/endpoint/?api\_key=12345abcdef'
- D. curl-X GET 'http://username.app.com/endpoint/?api\_key=12345abcdef'

**Answer: C**

**NEW QUESTION 287**

- (Exam Topic 3)

Refer to the exhibit.



A developer can access the TLS REST API on server A, but cannot access the API on server B. The developer can ping server B. When the developer performs a packet capture on the TLS REST API port on server B, the capture shows that the packet arrived and the server responded. What causes the issue?

- A. Port 80 is blocked on the outgoing interface of firewall B.
- B. Port 443 is blocked on the outgoing interface of firewall A.
- C. Port 443 is blocked on the incoming interface of firewall B.
- D. Port 80 is blocked on the incoming interface of firewall A.

**Answer: C**

**NEW QUESTION 292**

- (Exam Topic 3)

Which protocol runs over TCP port 830?

- A. NETCONF
- B. Telnet
- C. RESTCONF
- D. HTTP

**Answer: A**

**NEW QUESTION 296**

- (Exam Topic 3)

Refer to the exhibit.

```
cd ~/development/project01
mkdir info
cd info
[REDACTED]
cp ./requirements.txt ~/Documents/backup/requirements.txt
```

A developer just finished testing a Python script and wants to save the list of packages and versions installed on the current machine. The developer must make



sure that it will not cause any issues if tested on another device due to different library versions. Which line of code needs to be placed on the snippet where the code is missing?

- A. pip freeze 2> requirements.txt
- B. pip freeze > requirements.txt
- C. pip freeze => requirements.txt
- D. pip freeze | requirements.txt

**Answer: B**

**Explanation:**

pip freeze requirements.txt ile ilgili görsel sonucu The most common command is pip freeze > requirements. txt , which records an environment's current package list into requirements. txt. If you want to install the dependencies in a virtual environment, create and activate that environment first, then use the Install from requirements.

**NEW QUESTION 297**

- (Exam Topic 3)

What is a principle of a code review process?

- A. Changes are made after the code is submitted to source control.
- B. It must not prevent code from getting into production as quickly as possible.
- C. Naming standards must be consistent.
- D. A technical lead must sign off on the review.

**Answer: D**

**NEW QUESTION 300**

- (Exam Topic 3)

An engineer deploys a Cisco CSR 1000 V instance to a virtual machine. The engineer must output the device configuration in JSON format. Which protocol is used for this task?

- A. YANG
- B. NETCONF
- C. SNMP
- D. RESTCONF

**Answer: D**

**NEW QUESTION 302**

- (Exam Topic 3)

A company requires a new platform to store large volumes of log data that is generated in their assembly plant. The platform must be scalable, so the underlying technology must provide a path for fast deployment of new nodes for data and indexing? The data contains sensitive information, so specialist encryption tools must be used to secure the data. Which application deployment model meets the requirements?

- A. edge
- B. private cloud
- C. public cloud
- D. hybrid cloud

**Answer: D**

**Explanation:**

A hybrid cloud combines the benefits of both a private cloud, which offers the ability to store sensitive data in a secure, dedicated environment, and a public cloud, which offers the ability to scale quickly and easily by deploying new nodes as needed. With a hybrid cloud deployment, you could use specialist encryption tools to secure the sensitive data in the private cloud, and then take advantage of the scalability and flexibility of the public cloud to handle the large volumes of log data.

**NEW QUESTION 305**

.....

## Thank You for Trying Our Product

\* 100% Pass or Money Back

All our products come with a 90-day Money Back Guarantee.

\* One year free update

You can enjoy free update one year. 24x7 online support.

\* Trusted by Millions

We currently serve more than 30,000,000 customers.

\* Shop Securely

All transactions are protected by VeriSign!

**100% Pass Your 200-901 Exam with Our Prep Materials Via below:**

<https://www.certleader.com/200-901-dumps.html>