

# HP

## Exam Questions HPE6-A72

Aruba Certified Switching Associate Exam



NEW QUESTION 1  
Refer to the exhibit.

```
Access-1# debug l2mac event
Access-1# debug destination buffer
Access-1# page
```

```
show debug buffer
-----
2020-05-06:22:32:52. 601427|12mac-mgrd|LOG_DEBUG|AMM|-|L2MAC|L2MAC_EVENT|macmgr_m
ac_manager_handle_mac_event(1311), MAC=00:50:79:66:68:01, VLAN=1, Port=1/1/1 is
trying to be inserted
2020-05-06:22:32:52. 602027|12mac-mgrd|LOG_DEBUG|AMM|-|L2MAC|L2MAC_EVENT|macmgr_m
ac_manager_handle_mac_event(1328), MAC=00:50:79:66:68:01 was successfully inserted
```

What command will display the debug l2mac events?

- A. show module L2MAC
- B. show debug terminal
- C. show debug buffer module L2MAC
- D. show debug all

Answer: C

NEW QUESTION 2  
Refer to the exhibit.

```
Access-1(config-if)# show run int 1/1/1
interface 1/1/1
    no shutdown
    no routing
    vlan trunk native 1
    vlan trunk allowed all
    exit
Access-1(config-if)# vlan 100
Access-1(config-vlan-100)# exit
Access-1(config)#
```

What commands will successfully enable the SVI for vlan 100 on interface 1/1/1 to produce the results displayed in the command show ip interface brief in the exhibit below?

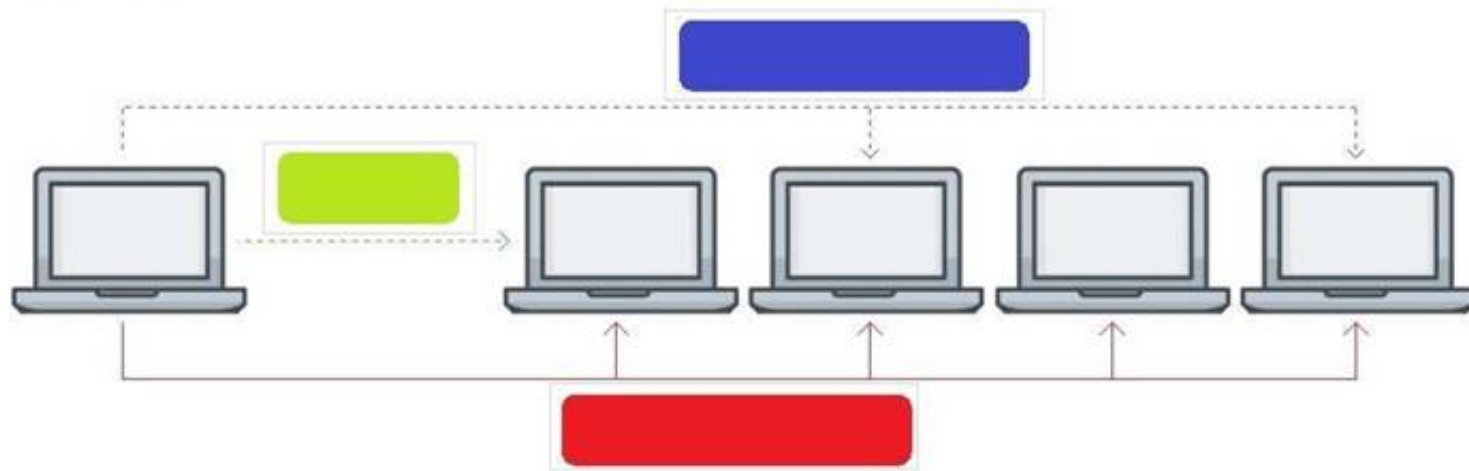
```
Access-1(config)# show ip interface brief
Interface                IP Address                Interface Status
                          link/admin
1/1/2                    No Address                down/down
1/1/3                    No Address                down/down
1/1/4                    No Address                down/down
1/1/5                    No Address                down/down
vlan100                  10.1.1.1/24              up/up
```

- A. Access-1(config)# interface 1/1/1 Access-1(config-if)# routingAccess-1(config-if)# interface vlan 100Access-1(config-if-vlan)# ip address 10.1.1.1/24
- B. Access-1(config)# interface 1/1/1Access-1(config-if)# vlan trunk permit vlan 100 Access-1(config-if)# interface vlan 100Access-1(config-if-vlan)# ip address static 10.1.1.1/24
- C. Access-1(config)# interface vlan 100Access-1(config-if-vlan)# ip address 10.1.1.1/24
- D. Access-1(config-if)# vlan 100Access-1(config-vlan)# ip address 10.1.1.1/24

Answer: C

NEW QUESTION 3  
Click on the colored box that corresponds with the line that best represents Multicast traffic flow.

**Answer Area**



- A. Mastered
- B. Not Mastered

**Answer:** A

**Explanation:**

Diagram Description automatically generated  
 Blue Box

**NEW QUESTION 4**

What is an available command on an Aruba AOS-CX switch that would back up the secondary image to a secure remote repository?

- A. backup secondary sftp://admin@10.1.1.21/GL.10.04.0003.swi
- B. copy secondary sftp://admin@10.1.1.21/GL.10.04.0003.swi
- C. copy sftp://admin@10.1.1.21/GL.10.04.0003.swi secondary
- D. copy secondary tftp://admin@10.1.1.21/GL.10.04.0003.swi

**Answer:** B

**NEW QUESTION 5**

Refer to the exhibit.

Internet Protocol Version 4 (TCP/IPv4) Properties

**General**

You can get IP settings assigned automatically if your network supports this capability. Otherwise, you need to ask your network administrator for the appropriate IP settings.

☐ Obtain an IP address automatically

☒ Use the following IP address:

IP address: 10 . 177 . 213 . 75

Subnet mask: 255 . 255 . 248 . 0

Default gateway: 10 . 177 . 208 . 1

☐ Obtain DNS server address automatically

☒ Use the following DNS server addresses:

Preferred DNS server: . . .

Alternate DNS server: . . .

☐ Validate settings upon exit

Advanced...

OK Cancel

Using the static IP address configured above, what is the converted binary value of the third octet assigned to the local interface?

- A. 11010101
- B. 10110001
- C. 01001011
- D. 11111000

**Answer:** A

#### NEW QUESTION 6

The customer has 778 developers testing computer games on the network. Which two actions resolve Broadcast storms? (Choose two.)

- A. Manually disable the redundant link to immediately resolve the impacted portion of the network.
- B. Utilize Spanning Tree to dynamically disable all redundant links in a segment.
- C. Setting switch ports to half-duplex will resolve Broadcast storms using Carrier Sense Multiple-Access Collision Detection (CSMA/CD).
- D. Enable single Area Open Shortest Path First (OSPF) on all Layer 2 switches, but do not enable routing.
- E. Utilize Spanning Tree to dynamically block Designated ports in addition to Alternate ports.

**Answer:** AB

#### NEW QUESTION 7

What is the binary conversion of the hexadecimal value 0x2001?

- A. 0010 0001
- B. 0002 0000 0000 0001
- C. 0011 0000 0000 0001
- D. 0010 0000 0000 0001

**Answer:** D

#### NEW QUESTION 8

Which two statements accurately describe the features of NetEdit? (Choose two.)

- A. NetEdit can be used to configure and validate any third-party device that supports SSH and REST access.
- B. NetEdit includes trial licensing for up to 10 nodes.
- C. NetEdit can perform configuration and compliance validation.
- D. NetEdit supports viewing and editing multiple devices using a single deployment plan.
- E. NetEdit can run on a mobile device using Android or Apple IOS.

**Answer:** CD

#### NEW QUESTION 9

Which two options are correct regarding the IEEE 802.11ax standard? (Choose two.)

- A. allows transmissions of up to 4.8Gbps
- B. is an emerging satellite connection standard to allow wireless access anywhere in the world
- C. operates only in the 5GHz similar to 802.11ac
- D. operates in both the 2.4GHz and 5GHz radios bands
- E. is the first WLAN standard to no longer use electromagnetic signals to transmit data

**Answer:** AD

#### NEW QUESTION 10

Interface 1/1/1 is up  
Admin state is up  
Link transitions: 1  
Description: TO\_PC-1  
Hardware: Ethernet, MAC Address: 00:11:22:33:44:55  
MTU 1500  
Type 1GbT  
Full-duplex qos trust none  
Speed 1000 Mb/s  
Auto-negotiation is on Flow-control: off Error-control: off MDI mode: MDIX VLAN Mode: access Access VLAN: 1111  
Which command will produce the above output?

- A. show interface vlan 1111
- B. show interface 1/1/1
- C. show interface gigabit 1/1/1
- D. show vlan 1111

**Answer:** B

#### NEW QUESTION 10

The section in blue can be ignored.  
SW1(config)# interface 1/1/1-1/1/2  
SW1(config-if-<1/1/1-1/1/2)# vlan access 2  
SW1(config-if-<1/1/1-1/1/2)# exit  
SW1(config)# interface 1/1/11-1/1/17  
SW1(config-if-<1/1/11-1/1/17)# vlan access 17  
SW1(config-if-<1/1/11-1/1/17)# exit  
After completing the above commands, what is the expected output of show vlan with no other vlan commanded having been added?



A.

```
SW1# show vlan
```

VLAN	Name	Status	Reason	Type	Interfaces
1	DEFAULT_VLAN_1	up	ok	default	1/1/2
2		up	ok	static	1/1/2
11		up	ok	static	1/1/17
12		up	ok	static	1/1/17
13		up	ok	static	1/1/17
14		up	ok	static	1/1/17
15		up	ok	static	1/1/17
16		up	ok	static	1/1/17
17		up	ok	static	1/1/17

B.

```
SW1# show vlan
```

VLAN	Name	Status	Reason	Type	Interfaces
1	DEFAULT_VLAN_1	up	ok	default	1/1/1-1/1/24
2		up	ok	static	1/1/1-1/1/2
17		up	ok	static	1/1/11-1/1/17

C.

```
SW1# show vlan
```

VLAN	Name	Status	Reason	Type	Interfaces
2	DEFAULT_VLAN_2	up	ok	static	1/1/1-1/1/2
17		up	ok	static	1/1/11-1/1/17

D.

```
SW1# show vlan
```

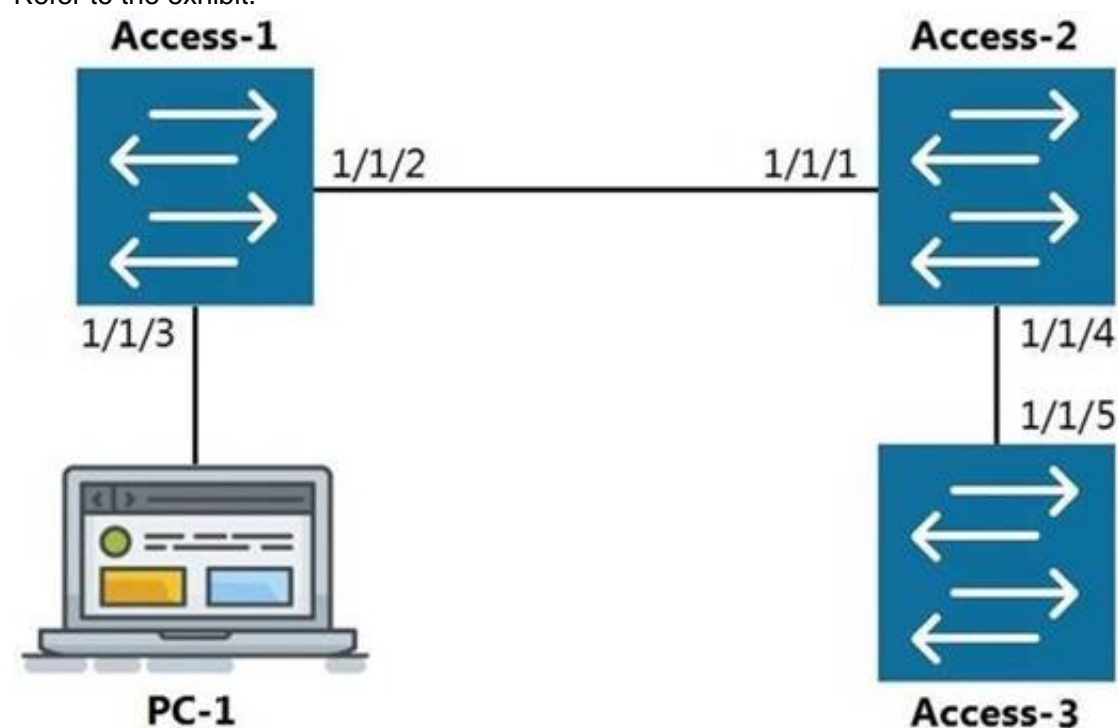
VLAN	Name	Status	Reason	Type	Interfaces
1	DEFAULT_VLAN_1	up	ok	default	<output omitted>
2		up	ok	static	1/1/1-1/1/2
17		up	ok	static	1/1/11-1/1/17

- A. Option A
- B. Option B
- C. Option C
- D. Option D

**Answer: D**

#### NEW QUESTION 12

Refer to the exhibit.



The command show LLDP neighbor-info gets typed into Access-1. All switches are Aruba OS-CX switches. What is the output of this command?

A.	LOCAL-PORT	CHASSIS-ID	PORT-ID	PORT-DESC	TTL	SYS-NAME
	1/1/1	90:20:c2:bc:ed:00	1/1/2	1/1/2	120	Access-2
	1/1/5	90:20:c2:bc:ef:00	1/1/2	1/1/2	120	Access-3
B.	LOCAL-PORT	CHASSIS-ID	PORT-ID	PORT-DESC	TTL	SYS-NAME
	1/1/1	90:20:c2:bc:ed:00	1/1/2	1/1/2	120	Access-2
C.	LOCAL-PORT	CHASSIS-ID	PORT-ID	PORT-DESC	TTL	SYS-NAME
	1/1/2	90:20:c2:bc:ed:00	1/1/1	1/1/1	120	Access-2
	1/1/2	90:20:c2:bc:ef:00	1/1/5	1/1/5	120	Access-3
D.	LOCAL-PORT	CHASSIS-ID	PORT-ID	PORT-DESC	TTL	SYS-NAME
	1/1/2	90:20:c2:bc:ed:00	1/1/1	1/1/1	120	Access-2

- A. Option A
- B. Option B
- C. Option C
- D. Option D

**Answer:** D

#### NEW QUESTION 15

Which switch supports a maximum of 8 line-cards, 3 fabric modules, and 2 management cards?

- A. Aruba 8400
- B. Aruba 8408
- C. Aruba 6410
- D. Aruba 5412r

**Answer:** A

#### NEW QUESTION 17

What are two features of the three-tier designs? (Choose two.)

- A. removes the distribution layer in favor of a spine-leaf design used in modern data center deployments
- B. adds a distribution layer to free up resources from the Core for improved performance and routing throughput
- C. a more scalable design over by leveraging a distribution layer to handle Layer 3 routing and access control in large deployments
- D. uses only Layer 2 access on the Access and the Core with Layer 3 routing and access control provided at the distribution layer
- E. is considered legacy by requiring a large flat layer-two broadcast domain from Core to Access and should be avoided

**Answer:** BC

#### NEW QUESTION 20

Which port or ports should be allowed through a firewall so that an AOS-CX switch can act as an SNMP Agent?

- A. UDP 1812 and UDP 1813
- B. UDP 161
- C. TCP 443
- D. UDP 162

**Answer:** B

#### NEW QUESTION 25

```
Core(config)# user admin password
Core(config)# interface mgmt
Core(config-if-mgmt)# ip static 10.254.16.89/22
Core(config-if-mgmt)# default-gateway 10.254.19.129
Core(config)# ssh server vrf mgmt
Core(config)# https-server vrf mgmt
```

You are tasked with configuring the Core switch to be managed by NetEdit. Currently, the Core switch is at factory-default settings. Which two steps are missing? (Choose two.)

- A. Core(config)# https-server rest access-mode read-write
- B. Core(config-if-mgmt)# no shutdown
- C. Core(config-if-mgmt)# no tftp-server
- D. Core(config-if-mgmt)# enable
- E. Core(config)# https-server rest access-mode read-only

**Answer:** AB

**NEW QUESTION 27**

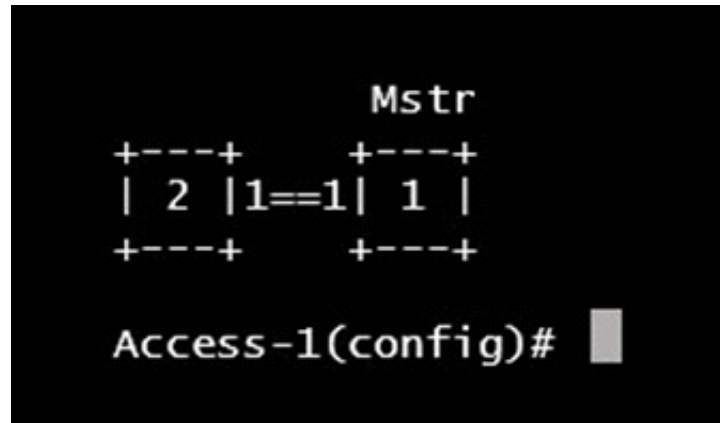
Which command will suppress LLDP messages from egressing on a given port while still allowing LLDP to be enabled on the switch?

- A. switch(config-if)# no lldp interface (port) transmit
- B. switch(config-if)# no lldp transmit
- C. switch(config-if)# no lldp receive
- D. switch(config)# no lldp

**Answer: B**

**NEW QUESTION 31**

Refer to the exhibit.



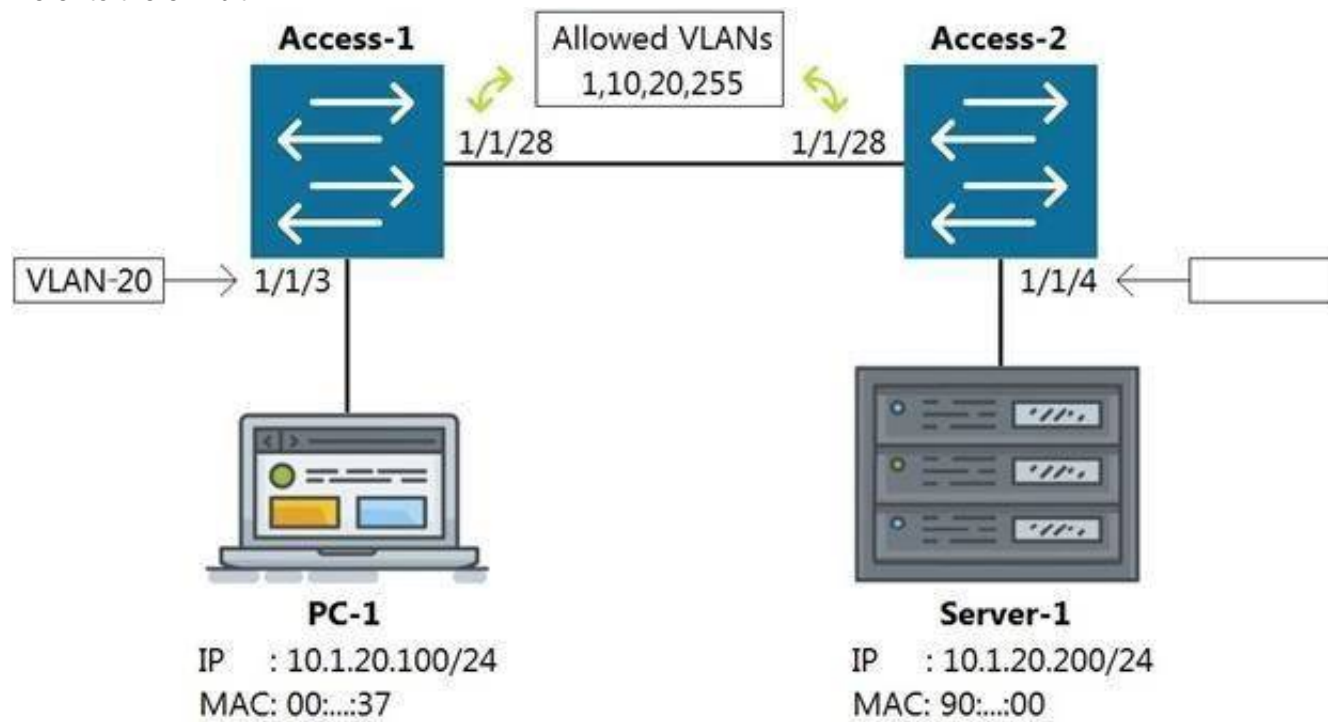
What VSF command produces the above output?

- A. show vsf member
- B. show vsf link
- C. show vsf topology
- D. show vsf detail

**Answer: C**

**NEW QUESTION 33**

Refer to the exhibit



Which command on Access-2 port 1/1/4 will enable connectivity between PC-1 and Server-1 without any routing enabled in the network?

- A. Access-2 (config-if-1/1/4)# vlan access 1, 10, 20, 255
- B. Access-2 (config-if-1/1/4)# vlan access 20
- C. Access-2 (config-if-1/1/4)# vlan 20 untag 1/1/4
- D. Access-2 (config-if-1/1/4)# vlan trunk allow 1, 10, 255

**Answer: B**

**NEW QUESTION 34**

Match each description to the correct management tool for Aruba AOS-CX.

Management Tools	Answer Area	Description
NetEdit	Management Tool	can run as an OVA
Aruba CX Mobile App		requires AOS-CX switches to support HTTPS, SSH, and REST access
		connects to switches via Bluetooth or Wi-Fi
		includes a feature for stacking automation
		supports SNMPv2c to discover third-party devices

- A. Mastered
- B. Not Mastered



Answer: A

Explanation:

Management Tools

NetEdit
Aruba CX Mobile App

Answer Area

Management Tool	Description
NetEdit	can run as an OVA
NetEdit	requires AOS-CX switches to support HTTPS, SSH, and REST access
Aruba CX Mobile App	connects to switches via Bluetooth or Wi-Fi
Aruba CX Mobile App	includes a feature for stacking automation
NetEdit	supports SNMPv2c to discover third-party devices

NEW QUESTION 36

Refer to the exhibit.



You are in the process of configuring VSF between Access-1 and Access-2. Access-1 has been configured as the VSF Master. What is a valid configuration for Access-2 to join the VSF stack?

- A. Access-2# configureAccess-2(config)# vsf member 1 Access-2(config)# vsf renumber-to 2 Access-2(vsf-member-1)# link 2 2/1/28 Access-2(vsf-member-1)# exitThis will save the VSF configuration and reboot the switc
- B. Do you want to continue (y/n)? y
- C. Access-2# configureAccess-2(config)# vsf member 2 Access-2(vsf-member-1)# link 2 1/1/28 Access-2(vsf-member-1)# exit This will save the VSF configuration and reboot the switc
- D. Do you want to continue (y/n)? y
- E. Access-2# configureAccess-2(config)# vsf member 2 Access-2(vsf-member-1)# link 1 1/1/28 Access-2(vsf-member-1)# exit This will save the VSF configuration and reboot the switc
- F. Do you want to continue (y/n)? y
- G. Access-2# configureAccess-2(config)# vsf member 1 Access-2(vsf-member-1)# link 1 1/1/28 Access-2(vsf-member-1)# exit Access-2(config)# vsf renumber-to 2This will save the VSF configuration and reboot the switc
- H. Do you want to continue (y/n)? y

Answer: C

NEW QUESTION 37

The following command is issued: Switch# checkpoint rollback start What is the result?

- A. The command will fail because rollback commands must be issued from global-config mode.
- B. The switch will revert the running-configuration to the checkpoint called 'start1 without a reboot.
- C. The command will fail because it is incomplete.
- D. The switch will use the checkpoint 'rollback1 as the starting configuration on next reboot.

Answer: B

NEW QUESTION 40

Refer to the exhibit.

Switch-1(config)# show spanning-tree   exclude Disabled					
←---- output omitted ----→					
Port	Role	State	Cost	Priority	Type
1/1/1	Designated	Forwarding	4000	128	point_to_point
Lag1		Forwarding	2000	64	point_to_point
1/1/2	Designated	Forwarding	10000	128	point_to_point
1/1/3	Designated	Forwarding	20000	128	point_to_point

Switch-1 is not the root bridge. The ports shown are all the connected pointtopoint interfaces. What Role (hidden by the blue rectangle) will be assigned to the Lag 1 interface?

- A. Alternate



- B. Backup
- C. Root
- D. Designated

**Answer: C**

#### NEW QUESTION 42

Which two commands will save the running-config so that changes will be loaded automatically on the next reboot? (Choose two.)

- A. write memory
- B. save
- C. copy config config1 config startup-config
- D. copy running-config startup-config
- E. copy running-config checkpoint boot-config

**Answer: AD**

#### NEW QUESTION 43

Core# configure terminal Core(config)# vrf Green Core(config-vrf)# exit Core(config)#  
 Core(config)# interface vlan 50 Core(config-if-vlan)# ?

Given the configuration on the CORE switch shown above, what command would follow to assign the switched virtual interface (SVI) vlan 50 to the VRF created?

- A. Core(config-if-vlan)# vrf attach Green
- B. Core(config-if-vlan)# ip vpn-instance Green
- C. Core(config-if-vlan)# ip vrf forwarding Green
- D. Core(config-if-vlan)# routing-context Green vrf

**Answer: A**

#### NEW QUESTION 45

What connectivity commands are available on AOS-CX switches? (Choose two.)

- A. netstatus
- B. traceroute
- C. ping
- D. pathping
- E. tracert

**Answer: BC**

#### NEW QUESTION 49

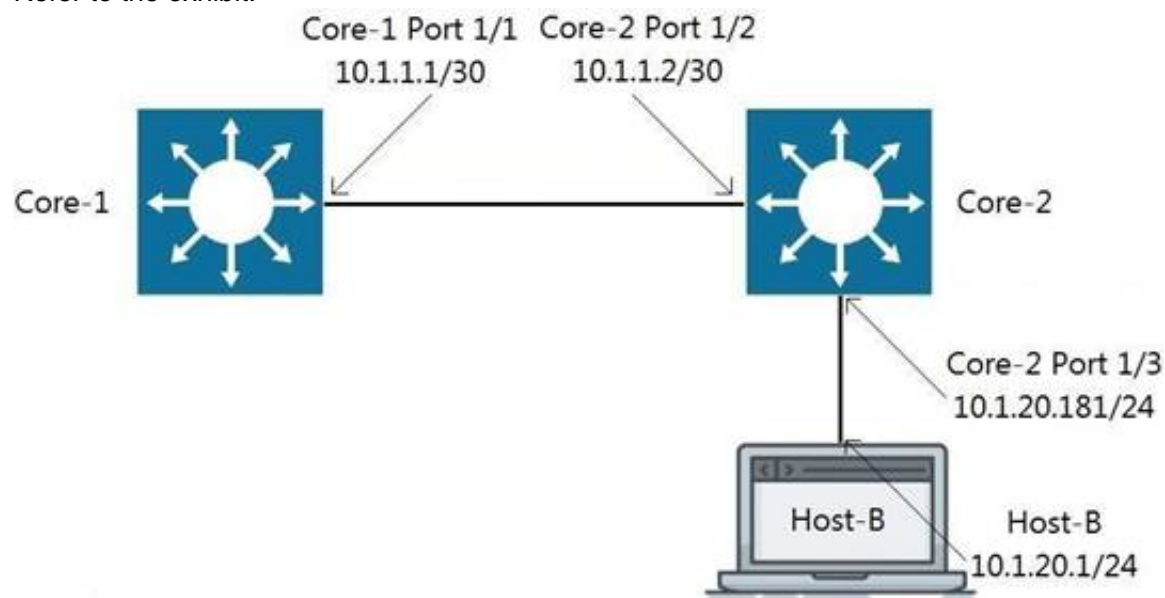
Which two statements accurately describe stacking with Aruba switches? (Choose two.)

- A. A VSF stack is allowed between an AOS-CX 6300M and 6300F switches.
- B. VSF is a core or aggregation layer stacking technology due to the high resiliency of sharing a single control plane.
- C. The VSF feature is not compatible between AOS-CX and AOS platforms.
- D. A VSF stack is allowed between an AOS 5400R and an AOS-CX 6400.
- E. VSF and VSX are stacking option with the AOS-CX 8320, 8325, 8400, and 6400 models.

**Answer: BE**

#### NEW QUESTION 54

Refer to the exhibit.



Traffic is failing between Core-1 and Host-B. IP addressing has correctly been applied, and all interfaces are attached to the vrf GREEN. Which configuration will correct the issue?

- A. Core-2(config)# ip route 0.0.0.0/0 10.1.1.1 vrf GREEN Host-B: assign the default-gateway address 10.1.20.181
- B. Core-1(config)# ip route 10.1.20.0/24 10.1.1.2 vrf GREEN Host-B: assign the default-gateway address 10.1.20.181
- C. Core-1(config)# ip route 10.1.20.0/24 10.1.1.2 vrf GREEN Host-B: assign the default-gateway address 10.1.20.1
- D. Host-B: assign the default-gateway address 10.1.20.181

**Answer:** B

**NEW QUESTION 56**

.....

## Thank You for Trying Our Product

### We offer two products:

1st - We have Practice Tests Software with Actual Exam Questions

2nd - Questions and Answers in PDF Format

### HPE6-A72 Practice Exam Features:

- \* HPE6-A72 Questions and Answers Updated Frequently
- \* HPE6-A72 Practice Questions Verified by Expert Senior Certified Staff
- \* HPE6-A72 Most Realistic Questions that Guarantee you a Pass on Your FirstTry
- \* HPE6-A72 Practice Test Questions in Multiple Choice Formats and Updatesfor 1 Year

**100% Actual & Verified — Instant Download, Please Click**  
**[Order The HPE6-A72 Practice Test Here](#)**