



Microsoft

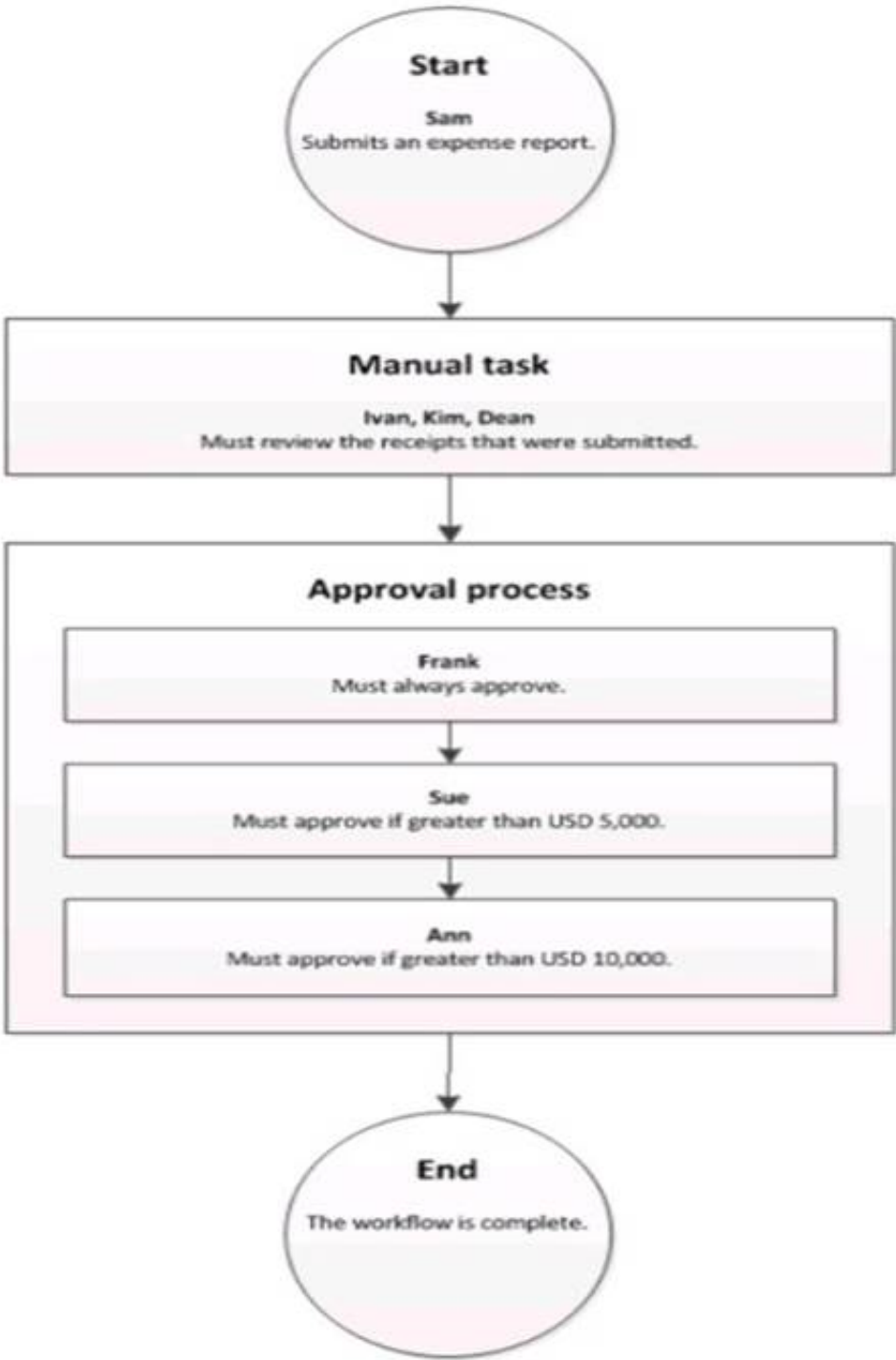
Exam Questions mb-300

Microsoft Dynamics 365 Unified Operations Core

NEW QUESTION 1

HOTSPOT - (Topic 6)

A company sets up a workflow for expense reports. An employee named Sam submits an expense report totaling USD 7,000 to go through the workflow.



Use the drop-down menus to select the answer choice that answers each question based on the information presented in the graphic.
NOTE: Each correct selection is worth one point.

Questions	Answer choice
What statement about the workflow is correct?	<div>Ann can reject the expense report.</div> <div>Ivan, Kim, and Dean must all complete the manual task.</div> <div>The workflow ends after Sue approves the expense report.</div> <div>The expense report will go through Frank, Sue, and Ann for approval.</div>
What type of workflow is this?	<div>Workflow with roles</div> <div>Workflow with a manual decision</div> <div>Workflow with multiple users in a task</div> <div>Workflow with a line-item workflow element</div>

- A. Mastered
- B. Not Mastered

Answer: A

Explanation:

Questions	Answer choice
What statement about the workflow is correct?	<div>Ann can reject the expense report.</div> <div>Ivan, Kim, and Dean must all complete the manual task.</div> <div>The workflow ends after Sue approves the expense report.</div> <div>The expense report will go through Frank, Sue, and Ann for approval.</div>
What type of workflow is this?	<div>Workflow with roles</div> <div>Workflow with a manual decision</div> <div>Workflow with multiple users in a task</div> <div>Workflow with a line-item workflow element</div>

NEW QUESTION 2

- (Topic 6)

A company implements Dynamics 365 Finance.

You need to schedule a recurring general journal import. What should you use?

- A. Data integrator
- B. Common Data Service

- C. Microsoft Excel add-in
- D. Data Import Export Framework
- E. Dual-write

Answer: D

NEW QUESTION 3

HOTSPOT - (Topic 6)

Your company is upgrading to Dynamics 365 Finance. The company has 20 offices in 20 countries/regions. Each office currently uses their own Microsoft Dynamics AX 2012 R3 implementation. Transactions occurring in the systems are high volume. Viewing data from each office requires logging into 20 different AX implementations and takes hours to complete.

You must upgrade to a solution that provides near real-time data refreshes and views the data in a single Power BI dashboard.

You need to implement the solution.

Which technology should you use? To answer, select the appropriate options in the answer area.

NOTE: Each correct selection is worth one point.

Requirement

Technology

Refresh data

	▼
Batch framework	
Dual-write	
Azure Batch	
AzureWebJobs	

Synchronized data for reporting

	▼
Entity store	
Dual-write	
JSON documents	
Lifecycle Services (LCS)	

- A. Mastered
- B. Not Mastered

Answer: A

Explanation:

Requirement

Technology

Refresh data

	▼
Batch framework	
Dual-write	
Azure Batch	
AzureWebJobs	

Synchronized data for reporting

	▼
Entity store	
Dual-write	
JSON documents	
Lifecycle Services (LCS)	

NEW QUESTION 4

- (Topic 6)

You are a Dynamics 365 for Finance and Operations system administrator for a United States-based corporation that is expanding to other regions.

You set up a new legal entity for Brazil.

You need to enable localization for Brazil in the new legal entity. What should you do?

- A. Create a new Lifecycle Services project.
- B. Create a new entity with your corporate address in the system, and then update the address to the Brazil office address.
- C. Create a new legal entity with the Brazil office address in the system, and then set preferences according to the user.
- D. Create a new configuration key and associate it with the Brazil localization.
- E. Create a new entity in the system with your corporate address and set the user language preferences for Brazil.

Answer: B

NEW QUESTION 5

HOTSPOT - (Topic 6)

A company uses finance and operations apps. The company operates and ships to only the United States, Canada, and the United Kingdom. The company has online stores for each of the countries/regions.

The company requires its customers to purchase online merchandise from only the country/region where the customer is physically located and redirects the customer to the appropriate site.

You need to configure the requirements.

What should you configure? To answer, select the appropriate options in the answer area.

NOTE: Each correct selection is worth one point.

Requirement	Configuration
Define the country/region per online store.	<div>▼</div> <div>Associate the country/region to the store.</div> <div>Create a party ID.</div> <div>Assign an address format.</div> <div>Create a default customer.</div>
Ensure that customers purchase from only the country/region where they are physically located.	<div>▼</div> <div>Set up geo detection.</div> <div>Split the country/region by statement method.</div> <div>Assign an organizational address.</div> <div>Create a default customer.</div>

- A. Mastered
- B. Not Mastered

Answer: A

Explanation:

Box 1: Associate the country/region to the store.

Associate countries and regions with online stores in Commerce headquarters

Countries and regions are associated with online stores (also known as online channels) in Commerce headquarters. When you associate a country or region with an online store, you indicate that customers who reside in that country or region should view the site that is mapped to that online store. You can associate multiple countries and regions with an online store as you require.

To associate countries or regions with an online store, follow these steps.

? Go to Retail and Commerce > Channels > Online stores, or search for "online stores" in the search box.

? Open the online channel that you want to associate countries or regions with.

? On the Countries/Regions FastTab, select Add, and then, in the Country/region field, select the country or region.

? Repeat these steps for any other countries or regions that you want to associate with the online channel.

Box 2: Set up geo detection

The geo detection and redirection feature in Dynamics 365 Commerce lets you detect your customers' geographic locations and then use that information to recommend the site that is most appropriate for the country or region where each customer lives.

NEW QUESTION 6

- (Topic 6)

Note: This question is part of a series of questions that present the same scenario. Each question in the series contains a unique solution that might meet the stated goals. Some question sets might have more than one correct solution, while others might not have a correct solution.

After you answer a question in this section, you will NOT be able to return to it. As a result, these questions will not appear in the review screen.

You are a Dynamics 365 for Finance and Operations system administrator. You have a test environment that is used by several people at any given time.

You create a new data entity in your development and migrate the code to the test environment. In the test environment, you are unable to find the data entity in the list. You need to locate the data entity.

Solution: Enable the Public API check box in the data entity. Does the solution meet the goal?

- A. Yes
- B. No

Answer: B

NEW QUESTION 7

HOTSPOT - (Topic 6)

You are planning to import trade agreement journal lines into Dynamics 365 Supply Chain Management from a Microsoft Excel workbook.

You configure the source and target mapping as shown in the table below.

Auto-Generated	Auto Default	Source field	Staging field
No	No	JournalNo	JournalNumber
No	No	ItemCode	ItemNumber
Yes	No	Auto	LineNumber
No	No	SalesPrice	Price
No	Yes	Default	CurrencyCode

You need to validate the Excel file and the mappings.

Which field or fields originate from which sources? To answer, select the appropriate options in the answer area.

NOTE: Each correct selection is worth one point.

Answer Area

Source

Fields in the Excel file

Field calculated by the system

Field calculated by the system

Field fixed to a single value

Field

JournalNo, ItemCode, SalesPrice
JournalNumber, ItemNumber, Price
JournalNo, ItemCode, JournalNumber, ItemNumber, Price, CurrencyCode
JournalNumber, ItemNumber, LineNumber, Price, CurrencyCode
LineNumber
JournalNumber
ItemNumber
CurrencyCode
CurrencyCode
JournalNumber
ItemNumber
LineNumber

- A. Mastered
- B. Not Mastered

Answer: A

Explanation:

Answer Area

Source

Fields in the Excel file

Field calculated by the system

Field calculated by the system

Field fixed to a single value

Field

JournalNo, ItemCode, SalesPrice
JournalNumber, ItemNumber, Price
JournalNo, ItemCode, JournalNumber, ItemNumber, Price, CurrencyCode
JournalNumber, ItemNumber, LineNumber, Price, CurrencyCode
LineNumber
JournalNumber
ItemNumber
CurrencyCode
CurrencyCode
JournalNumber
ItemNumber
LineNumber

NEW QUESTION 8

- (Topic 6)

Note: This question is part of a series of questions that present the same scenario. Each question in the series contains a unique solution that might meet the stated goals. Some question sets might have more than one correct solution, while others might not have a correct solution.

After you answer a question in this section, you will NOT be able to return to it. As a result, these questions will not appear in the review screen.

You are a Dynamics 365 Finance security administrator.

When starting security setups, users report that certain roles are gaining access to sensitive information via a form in the system.

You must investigate which user roles have what visibility level to system objects, and then send a report to the implementation team to address security compliance concerns.

You need to report the information from the system. Solution: Generate the Role to user assignments report. Does the solution meet the goal?

- A. Yes
- B. No

Answer: B

Explanation:

Reference:
https://docs.microsoft.com/en-us/dynamics365/fin-ops-core/dev-itpro/sysadmin/security- reports

NEW QUESTION 9

HOTSPOT - (Topic 6)

A company is standardizing its business processes. You plan to facilitate business process alignment by using the Business process modeler (BPM) tool in Lifecycle Services (LCS).

You need to identify the main capabilities of BPM.

Which of the following can you accomplish with the BPM tool in LCS? To answer, select the appropriate options in the answer area.

NOTE: Each correct selection is worth one point.

Capability

Integration

All functionality except

Tasks

Upload flowcharts from Task recorder
Pull master data
Pull reference data
Connect to external databases

Modify flowcharts
Attach video
Push process configurations to instances
Generate gap analysis

- A. Mastered
- B. Not Mastered

Answer: A

Explanation:

Capability	Tasks
Integration	<div>▼</div> <div>Upload flowcharts from Task recorder</div> <div>Pull master data</div> <div>Pull reference data</div> <div>Connect to external databases</div>
All functionality except	<div>▼</div> <div>Modify flowcharts</div> <div>Attach video</div> <div>Push process configurations to instances</div> <div>Generate gap analysis</div>

NEW QUESTION 10

- (Topic 6)

A client runs Dynamics 365 Finance.

The client wants to implement supply chain functionality that is fully integrated with the current Dynamics 365 Retail instance.

You need to implement the new functionality. What should you do?

- A. Configure Dynamics 365 Retail integration with Dynamics 365 Finance by using Common Data Service.
- B. Place the Dynamics 365 Retail instance into maintenance mode by using the Dynamics 365 InstanceManagement portal.
- C. Place the Dynamics 365 Retail instance into maintenance mode by using Lifecycle Services.
- D. Clear the Dynamics 365 Finance configuration in the License configuration form.

Answer: A

NEW QUESTION 10

- (Topic 6)

Note: This question is part of a series of questions that present the same scenario. Each question in the series contains a unique solution that might meet the stated goals. Some question sets might have more than one correct solution, while others might not have a correct solution.

After you answer a question in this section, you will NOT be able to return to it. As a result, these questions will not appear in the review screen.

You are configuring a Dynamics 365 for Finance and Operations environment. You must set up Microsoft Excel data exports.

You need to verify that the solution will result in a successful export of data to Excel. Solution: Use OAuth authentication.

Does the solution meet the goal?

- A. Yes
- B. No

Answer: B

NEW QUESTION 15

- (Topic 6)

A company that sells, rents, and service heating, ventilation, and air conditioning (HVAC) system implement Dynamics 365 Supply Chain Management.

When a maintenance request is created for a condenser unit, the request must be reviewed and approved before a work order is created. You must send both an email message and a text message to the reviewer for each maintenance request.

Which two options should you configure? Each answer represents part if the solution. NOTE: Each correct selection is worth one point.

- A. Power Apps apps
- B. Business events
- C. Workspaces
- D. Power Automate flows
- E. Standard workflows

Answer: BE

Explanation:

Reference: <https://docs.microsoft.com/en-us/dynamics365/fin-ops-core/dev-itpro/business-events/home-page>

<https://docs.microsoft.com/en-us/dynamics365/supply-chain/procurement/procurement-sourcing-workflows>

NEW QUESTION 18

- (Topic 6)

You are a Dynamics 365 for Finance and Operations system administrator.

A company named Contoso Ltd. is creating a new legal entity that will be similar to an existing legal entity. Team members copy key entities to the new legal entity using the Data management workspace. They indicate that there were already-configured pieces of data unique to the new legal entity before they ran the Copy into legal entity process.

The data import/export framework settings are listed in the table below:

Setting	Current value
Ignore error	Yes
Create error file	Yes
Remove duplicates	Yes

You need to determine what happened to the already-configured pieces of data. What happened to the data?

- A. Any source legal entity data that already exists in the destination legal entity will be updated.
- B. Any destination legal entity data will be deleted, and the source data will be inserted.
- C. Any source legal entity data that already exists in the destination legal entity will be ignored.
- D. Any source legal entity data that already exists in the destination legal entity will be displayed as an error for user action in the Data management workspace.

Answer: C

NEW QUESTION 23

- (Topic 6)

Note: This question is part of a series of questions that present the same scenario. Each question in the series contains a unique solution that might meet the stated goals. Some question sets might have more than one correct solution, while others might not have a correct solution.

After you answer a question in this section, you will NOT be able to return to it. As a result, these questions will not appear in the review screen.

A company's Dynamics 365 Commerce production instance is updated monthly as new versions of the software are released.

The company needs to identify any potential issues in new releases. They do not have developers to help with this initiative.

You need to implement a way to regression test scenarios.

Solution: Use the SysTest framework to create unit tests for critical business processes. Does the solution meet the goal?

- A. Yes
- B. No

Answer: B

Explanation:

Reference:

<https://docs.microsoft.com/en-us/dynamics365/fin-ops-core/dev-itpro/perf-test/testing-validation>

NEW QUESTION 27

- (Topic 6)

You have the following Dynamics 365 Finance instances:

Instance	Comments
1	Contains configuration data for a company named CompanyA
2	Contains a blank setup for a company named CompanyB

You must copy the configuration data from CompanyA to CompanyB. Solution: Use Copy into legal entity.

Does the solution meet the goal?

- A. Yes
- B. No

Answer: B

Explanation:

Reference:

<https://docs.microsoft.com/en-us/dynamics365/fin-ops-core/dev-itpro/data-entities/copy-configuration>

NEW QUESTION 28

HOTSPOT - (Topic 6)

You are a Dynamics 365 Finance system administrator.

Account managers need to use workspaces to monitor key pieces of data for customers and to navigate to forms for further actions.

You need to include workspace elements to achieve these needs.

Which design element should you use? To answer, select the appropriate configuration in the answer area.

NOTE: Each correct selection is worth one point.

Task

Presentation

View the number of sales orders that took place within the past seven days for a specific group of customers.

	▼
Tiles	
Links	
Favorites	
FactBoxes	

Provide direct access to forms commonly used by workspace users.

	▼
Charts	
Links	
Favorites	
FactBoxes	

- A. Mastered
- B. Not Mastered

Answer: A

Explanation:

Task	Presentation
View the number of sales orders that took place within the past seven days for a specific group of customers.	<div><div></div><div>Tiles</div><div>Links</div><div>Favorites</div><div>FactBoxes</div></div>
Provide direct access to forms commonly used by workspace users.	<div><div></div><div>Charts</div><div>Links</div><div>Favorites</div><div>FactBoxes</div></div>

NEW QUESTION 31

DRAG DROP - (Topic 6)

You are the project owner in a Lifecycle Services (LCS) project to deploy a Dynamics 365 for Finance and Operations environment. The system must be configured to enable testers to record processes that become business processes and test plans. You need to configure the system to generate User Acceptance Testing (UAT) test plans. In which order should you perform the actions? To answer, move all actions from the list of actions to the answer area and arrange them in the correct order.

Actions

Create business process libraries in the LCS project.

Enable Azure DevOps sync.

Configure Azure DevOps for the LCS project.

Configure system administrator help parameters to the LCS project.

Enable Sync test cases.

Answer Area

- A. Mastered
- B. Not Mastered

Answer: A

Explanation:

Actions

Create business process libraries in the LCS project.

Enable Azure DevOps sync.

Configure Azure DevOps for the LCS project.

Configure system administrator help parameters to the LCS project.

Enable Sync test cases.

Answer Area

Create business process libraries in the LCS project.

Configure Azure DevOps for the LCS project.

Configure system administrator help parameters to the LCS project.

Enable Azure DevOps sync.

Enable Sync test cases.

NEW QUESTION 35

- (Topic 6)

You are a Dynamics 365 for Finance and Operations system administrator. You have production and testing environments. You move the workflow from the testing environment to the production environment. The workflow in the production environment is stuck in a wait state. You need to resolve the issue with the workflow in the production environment. What should you do?

- A. Set the workflow batch job to critical
- B. Set the workflow messaging batch job group
- C. Grant the user workflow permissions
- D. Set the workflow execution account in the workflow parameters

Answer: D

NEW QUESTION 39

HOTSPOT - (Topic 6)

You are tasked with enhancing usability in the Dynamics 365 for Finance and Operations deployment for your organization. Your organization is evaluating different approaches, including using workspaces. You need to identify the goals of using workspaces. Which goals should you identify? To answer, select the appropriate options in the answer area. NOTE: Each correct selection is worth one point.

Answer Area

Requirement	Functional use
Visibility	Understand the current state of the light task activity to support informed decisions Display deep information supporting complex task execution
Workspace definition	An initial overview for a specific role to increase productivity A view of complex activities requiring interaction across different roles

- A. Mastered
 B. Not Mastered

Answer: A

Explanation:

Answer Area

Requirement	Functional use
Visibility	Understand the current state of the light task activity to support informed decisions Display deep information supporting complex task execution
Workspace definition	An initial overview for a specific role to increase productivity A view of complex activities requiring interaction across different roles

NEW QUESTION 44

- (Topic 6)

A multinational company plans to implement centralized procurement using purchase requisition workflows. Multiple workflows must be of the same type. Each region must use its own purchase requisition workflow. You need to implement the workflows. What should you do?

- A. Configure Instructions for users
 B. Configure the workflow owner
 C. Configure automated tasks
 D. Configure manual tasks
 E. Add a condition for running the workflow

Answer: E

NEW QUESTION 49

HOTSPOT - (Topic 6)

Your company uses Dynamics 365 Supply Chain Management.

Discounts are being applied to customer invoices at month end incorrectly. Users are configuring the wrong discount group when maintaining customer accounts. You need to implement alerts to identify when the wrong discount group is configured. Which alert value should you use? To answer, select the appropriate options in the answer area.

NOTE: Each correct selection is worth one point.

Configuration

Value

Alert me when table

Price agreements
Customers
Invoice lines
Sales order lines

Alert me when event

Has changed
Is set to:
Record has been created
Record has been deleted

- A. Mastered
 B. Not Mastered

Answer: A

Explanation:

Box 1: Price agreements

Trade agreements (Price/ discount agreement) in Dynamics 365 for Finance and Operations - Setup.

Trade agreements in AX. It is also called as Price/discount agreements.

As the name suggests, it is used to setup the prices (sales prices & purchase prices) and the discounts (Line discounts, Multiline discounts & Total discounts) for the item, customer and Vendor combinations. Once price and discount rules are set up in the trade agreements, the valid prices and/or discounts are fetched and applied to quotations, orders, and invoices in AX.

Box 2: Has changed

There are two kinds of alerts that can be configured by users. These are change-based alerts and due date alerts.

NEW QUESTION 50

- (Topic 6)

A company implements Dynamics 365 for Finance and Operations.

The company's purchasing agents must be able to create purchase orders for a first-time vendor.
All new vendor requests must be reviewed and approved by the accounts payable manager.
A workflow must send an email to the accounts payable manager and the senior accounts payable clerk notifying both when a vendor application is waiting for approval. The workflow must be configured to account for people changing job roles.
You need to configure the system to meet these requirements. What should you do?

- A. On the Recipient tab, select Use
- B. Then, select the users for the accounts payable manager and the senior accounts payable clerk from the list.
- C. On the Recipient tab, select Workflow use
- D. Then, select the user for purchasing agents from the list.
- E. On the Recipient tab, select Workflow use
- F. Then, select the role for vendor approval from the list.
- G. On the Recipient tab, select Use
- H. Then, select the role for vendor approval from the list.
- I. On the Recipient tab, select Participan
- J. Then, select the role for vendor approval from the list.
- K. On the Recipient tab, select Participan
- L. Then, select the users for the accounts payable manager and the senior accounts payable clerk from the list.

Answer: E

Explanation:

Reference:
<https://docs.microsoft.com/en-us/dynamics365/fin-ops-core/fin-ops/organization-administration/configure-approval-process-workflow>

NEW QUESTION 51

DRAG DROP - (Topic 6)
You create a new Dynamics 365 Finance instance.
You must migrate data from several third-party financial systems into a Dynamics 365 Finance instance. You gather all relevant data.
You need to map the third-party data to Dynamics 365 Finance entities.
Which entity categories should you use? To answer, drag the appropriate entity categories to the correct source data. Each entity category may be used once, more than once, or not at all. You may need to drag the split bar between panes or scroll to view content.
NOTE: Each correct selection is worth one point.

Answer Area

Entity categories	Source data	Entity category
Document	Accounts receivable configurations	
Master	Methods of payment	
Parameter	Customers	
Reference	Sales orders	
Transaction	Payment vouchers	

- A. Mastered
- B. Not Mastered

Answer: A

Explanation:

Answer Area

Entity categories

Source data

Entity category

Document	Accounts receivable configurations	Parameter
Master	Methods of payment	Reference
Parameter	Customers	Master
Reference	Sales orders	Document
Transaction	Payment vouchers	Transaction

NEW QUESTION 56

- (Topic 6)

Note: This question is part of a series of questions that present the same scenario. Each question in the series contains a unique solution that might meet the stated goals. Some question sets might have more than one correct solution, while others might not have a correct solution.

After you answer a question in this section, you will NOT be able to return to it. As a result, these questions will not appear in the review screen.

A company's Dynamics 365 Commerce production instance is updated monthly as new versions of the software are released.

The company needs to identify any potential issues in new releases. They do not have developers to help with this initiative.

You need to implement a way to regression test scenarios.

Solution: Use the Acceptance Test Library (ATL) framework to create regression test scenarios for critical business processes that do not require any X++ code changes.

Does the solution meet the goal?

A. Yes

B. No

Answer: B

Explanation:

Reference:

<https://ellipsesolutions.com/acceptance-test-library-for-dynamics-365-for-finance-and-operations-or-when-rsat-is-not-enough/>

NEW QUESTION 60

DRAG DROP - (Topic 6)

You are implementing Dynamics 365 Finance. You need to perform testing.

Which tests should you perform? To answer, drag the appropriate test types to the correct requirements. Each test type may be used once, more than once, or not at all. You may need to drag the split bar between panes or scroll to view content.

NOTE: Each correct selection is worth one point.

Test types		Requirement	Test type
Component test		Ensure that a singular function within the application works with real objects from other classes.	
Performance test		Ensure that the latency of the application meets acceptability metrics for users.	
Regression test		Ensure that as new capabilities are added, old capabilities are not broken.	
Unit test			

A. Mastered

B. Not Mastered

Answer: A

Explanation:

Test types		Requirement	Test type
Component test		Ensure that a singular function within the application works with real objects from other classes.	Unit test
Performance test		Ensure that the latency of the application meets acceptability metrics for users.	Performance test
Regression test		Ensure that as new capabilities are added, old capabilities are not broken.	Regression test
Unit test			

NEW QUESTION 63

DRAG DROP - (Topic 6)

A company is implementing Dynamics 365 Finance. The company the following requirements:

- * Employees must be able to upload travel receipts from their mobile device.
- * Employees must be able to record effort spent on billable tasks.

Which mobile workspaces should you use? Answer, drag the appropriate mobile workspaces to the correct requirements. Each mobile workspace may be used once, more than once, or not at all. You may need to drag to drag the split bar between panes or scroll to view content.

NOTE: Each correct selection is worth one point.

Mobile workspaces	Requirement	Mobile workspace
Expense management	Employees must be able to upload travel receipts from their mobile device. Employees must be able to record effort spent on billable tasks.	Mobile workspace
Cost controlling		Mobile workspace
My team		
Project time entry		

- A. Mastered
B. Not Mastered

Answer: A

Explanation:

Mobile workspaces	Requirement	Mobile workspace
Expense management	Employees must be able to upload travel receipts from their mobile device. Employees must be able to record effort spent on billable tasks.	Expense management
Cost controlling		Project time entry
My team		
Project time entry		

NEW QUESTION 68

DRAG DROP - (Topic 6)

You design flow control for a complex expense workflow.

The workflow must run the approval process for expense reports simultaneously.

If an expense report is for an amount more than \$1,000, a supervisor must approve the expense report.

You need to design the workflow.

Which flow control elements should you use? To answer, drag the appropriate flow control shapes to the correct requirements. Each flow control shape may be used once, more than once, or not at all. You may need to drag the split bar between panes or scroll to view content.

NOTE: Each correct selection is worth one point.

Flow control shapes	Requirement	Flow control shape
Conditional decision	Run several processes simultaneously. Evaluate total amount for expense report.	Flow control shape
Manual decision		Flow control shape
Parallel activity		
Subworkflow		

- A. Mastered
B. Not Mastered

Answer: A

Explanation:

Flow control shapes	Requirement	Flow control shape
Conditional decision	Run several processes simultaneously. Evaluate total amount for expense report.	Parallel activity
Manual decision		Manual decision
Parallel activity		
Subworkflow		

NEW QUESTION 69

HOTSPOT - (Topic 6)

You support custom functionality in Dynamics 365 Finance.

Your company requires that all solutions be fully tested before they are deployed to production.

You need to use different testing types prior to deployments.

Which testing type should you use? To answer, select the appropriate options in the answer area.

NOTE: Each correct selection is worth one point.

Answer Area

Requirement	Testing type
Isolate and test new features individually.	<div><div></div><div>Unit Regression Functional End to end</div></div>
Test whether new features break existing capabilities.	<div><div></div><div>Unit Regression Functional End to end</div></div>
Validate that multiple new features meet requirements.	<div><div></div><div>Unit Regression Functional End to end</div></div>
Test all components of the solution together.	<div><div></div><div>Unit Regression Functional End to end</div></div>

- A. Mastered
B. Not Mastered

Answer: A

Explanation:

Box 1: Unit

Unit testing is a software development process in which the smallest testable parts of an application, called units, are individually and independently scrutinized for proper operation. This testing methodology is done during the development process by the software developers and sometimes QA staff.

Box 2: Regression

What is regression testing?

Image result for Dynamics 365 what is regression testing

Regression testing is a software testing practice that ensures an application still functions as expected after any code changes, updates, or improvements.

Regression testing is responsible for the overall stability and functionality of the existing features.

Box 3: Functional

FUNCTIONAL TESTING is a type of software testing that validates the software system against the functional requirements/specifications.

Box 4: End to End

End-to-end testing is a methodology that assesses the working order of a complex product in a start-to-finish process. End-to-end testing verifies that all components of a system are able to run and perform optimally under real-world scenarios.

NEW QUESTION 70

- (Topic 6)

A company delivers seafood to retail stores.

Refrigeration trucks send temperature and distance data from internet of Things (IoT) sensors over 5G. Data is written to an API endpoint in Microsoft Azure. The Temperature and distance data are stored in Common Data Service and edited in Dynamics 365 Finance.

You create model- driven apps to visual data. The apps support online and offline modes. You must update the following:

* The shipment information in Dynamics 365 Finance based on delivery distance and real- time temperature readings from trucks

* The corresponding Common Data Service data with the latest shipment status You need to update the shipment information.

What should you use?

- A. Dual-write
B. Power Automate (Flow)
C. Azure IoT Hub
D. Azure IoT Central
E. Azure IoT Edge

Answer: A

NEW QUESTION 71

DRAG DROP - (Topic 6)

You are implementing Dynamics 365 Finance. You have the following user requirements:

? The ability to see a tile that will display the total of all received purchase orders

? Coordinate the closure of Accounts payable after the last payment has been processed for the month

You need to configure the system.

Which option should you use? To answer, drag the appropriate option to the correct requirements. Each option may be used once, more than once, or not at all.

You may need to drag the split bar between panes or scroll to view content.

NOTE: Each correct selection is worth one point.

Options	Requirements	Option
<div>Workspace</div>	Ability to see a tile that will display the total of all received purchase orders	<div></div>
<div>Workflow</div>		
<div>Purchase order inquiry</div>	Coordinate the closure of Accounts payable	<div></div>
<div>Purchase order report</div>		

- A. Mastered
- B. Not Mastered

Answer: A

Explanation:

Options	Requirements	Option
<div>Workspace</div>	Ability to see a tile that will display the total of all received purchase orders	<div>Workspace</div>
<div>Workflow</div>		
<div>Purchase order inquiry</div>	Coordinate the closure of Accounts payable	<div>Workspace</div>
<div>Purchase order report</div>		

NEW QUESTION 76

- (Topic 6)

A system administrator has limited security rights in a Dynamics 365 for Finance and Operations environment that has multiple legal entities. You have a service-level agreement (SLA) of 30 minutes for support requests.

The organizational administrator set up the printers for the organization.

A printer fails. The system administrator deletes the printer instance. Sensitive print jobs remain in the printer queue and must be purged. Existing permissions do not allow the system administrator to purge the print queue because the printer is attached to multiple legal entities.

You need to purge the documents from the print queue. What should you do?

- A. Wait for the organizational administrator to return to purge the documents._
- B. Use the system administration utility to purge the documents.
- C. Use an account with administrative permissions on the network printer to purge the queue.
- D. Contact Microsoft technical support-

Answer: C

NEW QUESTION 80

SIMULATION - (Topic 6)

A user named Karl recently moved to France and will begin working at Contoso Consulting FR (FRSI).

You need to ensure that the default legal entity for Karl is set to FRSI. The solution must ensure that the default date, time, and number format for Karl is set to French.

To complete this task, sign in to the Dynamics 365 portal.

- A. Mastered
- B. Not Mastered

Answer: A

Explanation:

- ? Navigate to System Administration > Users > Users.
- ? Select Karl's user account.
- ? Click User Options.
- ? Go to the Preferences tab.
- ? In the Company field, select Contoso Consulting FR (FRSI).
- ? In the Date, time and number format field, select French.
- ? Click Save to save the changes.

NEW QUESTION 83

- (Topic 6)

A company implements Dynamics 365 Finance

The company plans to implement the Regression Suite Automation Tool (RSAT) to assist with their automated testing. The company creates test scripts and must store the scripts in a location that is accessible by RSAT.

You need to configure RSAT.

Where should you upload the test scripts?

- A. Microsoft SharePoint
- B. Microsoft Azure DevOps
- C. Document Management
- D. Common Data Service

Answer: B

Explanation:

Reference:
<https://docs.microsoft.com/en-us/dynamics365/fin-ops-core/dev-itpro/perf-test/rsat/rsat-overview#rsat-user-interface-overview>

NEW QUESTION 86

- (Topic 6)

You are preparing to migrate data into Dynamics 365 Finance from an older system.

You must assign customer to specific receivables accounts by region. A custom field within the older system exists to assign the customer to a region.

You need to map the customer data. What should you do?

- A. Add a field in Dynamics 365 Finance to mirror the older system configuration
- B. Map the custom field from the older system to the customer group field in Dynamics 365 Finance.
- C. Map the custom field from the older system to the customer account number in Dynamics 365 Finance.
- D. Map the value from the custom field in the older system to the customer segment field in Dynamics 365 Finance

Answer: B

Explanation:

A customer group is a way of aggregating customers that are similar in some way. For example, you may use them to distinguish between retail and wholesale customers or between company employees and external customers etc.

Reference: <https://docs.microsoft.com/en-us/dynamics365/fin-ops-core/dev-itpro/create-a-customer-group>

NEW QUESTION 88

HOTSPOT - (Topic 6)

You are configuring a new Dynamics 365 app deployment for a company. The company has the following requirements:

Create a rewards program for customers.

Manage long-term relationships with customers through clienteling. Manage customer ledger entries to reconcile payments.

You need to select the appropriate app to use.

Which app should you use? To answer, select the appropriate options in the answer area. NOTE: Each correct selection is worth one point.

Answer Area

Requirement	App
Create a rewards program for customers.	<input type="checkbox"/> Dynamics 365 Finance <input type="checkbox"/> Dynamics 365 Supply Chain Management <input type="checkbox"/> Dynamics 365 Project Operations <input type="checkbox"/> Dynamics 365 Commerce
Manage long-term relationships with customers.	<input type="checkbox"/> Dynamics 365 Finance <input type="checkbox"/> Dynamics 365 Supply Chain Management <input type="checkbox"/> Dynamics 365 Project Operations <input type="checkbox"/> Dynamics 365 Commerce
Manage long-term relationships with customers.	<input type="checkbox"/> Dynamics 365 Finance <input type="checkbox"/> Dynamics 365 Supply Chain Management <input type="checkbox"/> Dynamics 365 Project Operations <input type="checkbox"/> Dynamics 365 Commerce
Manage customer ledger entries to reconcile payments.	<input type="checkbox"/> Dynamics 365 Finance <input type="checkbox"/> Dynamics 365 Supply Chain Management <input type="checkbox"/> Dynamics 365 Project Operations <input type="checkbox"/> Dynamics 365 Commerce

- A. Mastered
- B. Not Mastered

Answer: A

Explanation:

Answer Area

Requirement	App
Create a rewards program for customers.	<input checked="" type="checkbox"/> Dynamics 365 Finance <input type="checkbox"/> Dynamics 365 Supply Chain Management <input type="checkbox"/> Dynamics 365 Project Operations <input type="checkbox"/> Dynamics 365 Commerce
Manage long-term relationships with customers.	<input checked="" type="checkbox"/> Dynamics 365 Finance <input type="checkbox"/> Dynamics 365 Supply Chain Management <input type="checkbox"/> Dynamics 365 Project Operations <input type="checkbox"/> Dynamics 365 Commerce
Manage long-term relationships with customers.	<input checked="" type="checkbox"/> Dynamics 365 Finance <input type="checkbox"/> Dynamics 365 Supply Chain Management <input type="checkbox"/> Dynamics 365 Project Operations <input type="checkbox"/> Dynamics 365 Commerce
Manage customer ledger entries to reconcile payments.	<input checked="" type="checkbox"/> Dynamics 365 Finance <input type="checkbox"/> Dynamics 365 Supply Chain Management <input type="checkbox"/> Dynamics 365 Project Operations <input type="checkbox"/> Dynamics 365 Commerce

NEW QUESTION 90

FILL IN THE BLANK - (Topic 6)

Note: This question is part of a series of questions that present the same scenario. Each question in the series contains a unique solution. Determine whether the solution meets the stated goals. Some question sets might have more than one correct solution, while others might not have a correct solution.

After you answer a question in this section, you will NOT be able to return to it. As a result, these questions will not appear in the review screen.

A company is implementing Dynamics 365 Finance. The company has two legal entities in two different regions requiring separate tenants. CompanyA and CompanyB are both implementing Dynamics 365 Finance as separate implementation teams in a staggered approach.

CompanyA and CompanyB want to ensure that assets are accessible across the companies and to Microsoft but will not be publicly accessible to other companies.

You need to determine how to set up and configure assets to the Lifecycle Services (LCS) Asset library.

Solution: Create a project-level asset library in LCS. Does the solution meet the goal?

A.

Answer: A

NEW QUESTION 91

- (Topic 6)

Note: This question is part of a series of questions that present the same scenario. Each question in the series contains a unique solution. Determine whether the solution meets the stated goals. Some question sets might have more than one correct solution, while others might not have a correct solution.

After you answer a question in this section, you will NOT be able to return to it. As a result, these questions will not appear in the review screen.

You are a Dynamics 365 Finance sales manager. You use a Power BI dashboard that shows near-real-time sales data from reports and tiles.

It is impractical to keep switching between multiple applications.

You need to configure a way to access the Power BI reports within the Dynamics 365 Finance client.

Solution: Import the Power BI reports through Lifecycle Services and pin it to your workspace.

Does the solution meet the goal?

A. Yes

B. No

Answer: B

Explanation:

Reference:

<https://docs.microsoft.com/en-us/dynamics365/fin-ops-core/dev-itpro/analytics/pin-power-bi-reports>

NEW QUESTION 92

- (Topic 6)

A company is implementing Dynamics 365 Finance.

The company wants to use Power BI as a reporting solution. The reporting must be embedded into the workspace.

You need to identify the data strategy that supports this requirement. What should you use?

A. Dual-write

B. Bring your own database (BYOD)

C. Entity store

D. Data management

Answer: C

Explanation:

Entity store is an operational data store that is included with Microsoft Dynamics 365 Finance. Entity store enables Power BI integration.

Reference:

<https://docs.microsoft.com/en-us/dynamics365/fin-ops-core/dev-itpro/analytics/power-bi-integration-entity-store>

NEW QUESTION 97

DRAG DROP - (Topic 6)

A company named Company A is implementing Dynamics 365 Finance. The company is migrating organizational structure data from an older system.

CompanyA has a wholly-owned subsidiary named CompanyB that reports its own financials. CompanyA and CompanyB transact with each other. The companies have three regional offices that are individual cost centers.

You need to configure the organization.

What should you use? To answer, drag the appropriate functionalities to the correct requirements. Each functionality may be used once, more than once, or not at all. You may need to drag the split bar between panes or scroll to view content.

NOTE: Each correct selection is worth one point.

Functionalities

Legal entity

Financial dimension

Financial dimension set

Consolidation legal entity

Answer Area

Requirement

Set up financials for CompanyB.

Set up for regional offices.

Functionality

Answer:

Functionalities

Legal entity

Financial dimension

Financial dimension set

Consolidation legal entity

Answer Area

Requirement

Set up financials for CompanyB.

Set up for regional offices.

Functionality

Legal entity

Financial dimension set

A. Mastered

B. Not Mastered

Answer: A

NEW QUESTION 99

SIMULATION - (Topic 6)

You are a functional consultant for Contoso Entertainment System USA (USMF). You plan to implement a purchase order (PO) change management solution.

You need to configure the system to ensure that users can review a history of the changes made to POs by using approval workflows.

To complete this task, sign in to the Dynamics 365 portal.

A. Mastered

B. Not Mastered

Guaranteed success with Our exam guides

visit - <https://www.certshared.com>

Answer: A

Explanation:

- ? Navigate to Procurement and sourcing > Setup > Procurement and sourcing parameters > General tab
- ? Under Change Management For Purchase Orders, click the slider for Activate change management to set it to Yes.
- ? Click the slider for Allow override of settings per supplier to set it to No.

NEW QUESTION 104

SIMULATION - (Topic 6)

You are a functional consultant for Contoso Entertainment System USA (USMF). You plan to import customers from an old legacy system to USMF. You need to identify the format used for the customer details v2 entity by creating an export job. The solution must use a Microsoft Excel data format and Contoso Europe. To validate your results, save the file in Microsoft Excel format to the Downloads\Customer folder. To complete this task, sign in to the Dynamics 365 portal.
NOTE: To complete this task, you must configure the Shared working directory for the Framework parameters to C:\users\public\documents\.

- A. Mastered
- B. Not Mastered

Answer: A

Explanation:

- ? Navigate to System Administration > Workspaces > Data management.
- ? Click the Framework parameters tile.
- ? In the Shared working directory field, enter C:\users\public\documents\ then click Validate.
- ? Click the Export tile.
- ? In the Name field, enter a name for the export job.
- ? In the Entity Name field, select the Customer details v2 entity.
- ? Click on Add entity.
- ? In the Target data format field, select EXCEL.
- ? Set the Skip staging option to No.
- ? Click the Add button.
- ? Click Export to begin the export.
- ? Click on Download package.
- ? Select the Downloads\Customer folder as the location to save the downloaded file.

NEW QUESTION 106

DRAG DROP - (Topic 6)

A company is migrating to Dynamics 365 for Finance and Operations from a legacy system. The company is creating new questionnaires for customers. When the survey responses come in, the company wants to provide ratings as a foundation for a further discussion. You set up questionnaire types, question types, and questionnaire parameters. You need to design the questionnaire. In which order should you perform the actions? To answer, move all actions to the answer area and arrange them in the correct order.

Actions

Attach questions to the questionnaire

Set up the questionnaire

Set up questions and their association

Set up answer groups and answers

Answer Area

<

>

- A. Mastered
- B. Not Mastered

Answer: A

Explanation:

References:
<https://docs.microsoft.com/en-us/dynamics365/unified-operations/talent/design- questionnaires>

NEW QUESTION 107

SIMULATION - (Topic 6)

A company named Fabrikam, Inc. plans to open an office in the United Kingdom. You need to create a new legal entity named Fabrikam that uses a company code of FABR. To complete this task, sign in to the Dynamics 365 portal.

- A. Mastered
- B. Not Mastered

Answer: A

Explanation:

- ? Go to Navigation pane > Modules > Organization administration > Organizations > Legal entities.
- ? Click New.

- ? In the Name field, type Fabrikam.
- ? In the Company field, type FABR.
- ? In the Country/region field, enter or select a value.
- ? Click OK.

NEW QUESTION 111

HOTSPOT - (Topic 6)
HOTSPOT

A company is implementing Dynamics 365 Finance and Dynamics 365 Supply Chain Management. The company is preparing to migrate data to the new systems. You need to import sales order headers and lines by using a single entity. All legal entities must contain the same setup data. What should you use? To answer, select the appropriate options in the answer area.
NOTE: Each correct selection is worth one point.

Requirement

Option

Import the sales order header and lines by using a single entity.

▼

Composite entity
Data entity
Configuration data project

Ensure that all legal entities contain the same setup data.

▼

Composite entity
Data entity
Copy into legal entity
Configuration data project

- A. Mastered
- B. Not Mastered

Answer: A

Explanation:

Requirement

Option

Import the sales order header and lines by using a single entity.

▼

Composite entity
Data entity
Configuration data project

Ensure that all legal entities contain the same setup data.

▼

Composite entity
Data entity
Copy into legal entity
Configuration data project

NEW QUESTION 112

- (Topic 6)

Note: This question is part of a series of questions that present the same scenario. Each question in the series contains a unique solution that might meet the stated goals. Some question sets might have more than one correct solution, while others might not have a correct solution.

After you answer a question in this section, you will NOT be able to return to it. As a result, these questions will not appear in the review screen.

You are a functional consultant who is deploying Dynamics 365 for Finance and Operations.

The implementation must:

- ? Use an iterative approach
- ? Integrate with real-world data
- ? Enforce standards and governance
- ? Implement multiple rounds of feedback

You need to deploy and validate the implementation.

Solution: Deploy the out-of-the-box solution. Enable users to customize the solution based on individual user scenarios.

Does the solution meet the goal?

- A. Yes
- B. No

Answer: B

NEW QUESTION 114

- (Topic 6)

You are preparing to migrate data into Dynamic 365 Supply chain management. You need to identify which tool to use for data migration activities.

NOTE: Each correct selection is worth one point.

- A. Electronic reporting tool
- B. Regression suite automation tool
- C. Data management workspace
- D. Excel workbook designer
- E. Office integration

Answer: CDE

NEW QUESTION 116

SIMULATION - (Topic 6)

You are a functional consultant for Contoso Entertainment System USA (USMF).

Another functional consultant attempts to create an export job in the system. The consultant reports that the export job fails and the path is unavailable.

You need to modify the data export settings to resolve the issue. To complete this task, sign in to the Dynamics 365 portal.

- A. Mastered
- B. Not Mastered

Answer: A

Explanation:

You need to modify the path in the framework parameters for the export job.

? Navigate to System Administration > Workspaces > Data management.

? Click the Framework parameters tile.

? In the Shared working directory field, enter a valid path such as C:\users\public\documents\ then click Validate.

? Click Save to save the changes.

NEW QUESTION 118

- (Topic 6)

Note: This question is part of a series of questions that present the same scenario. Each question in the series contains a unique solution that might meet the stated goals. Some question sets might have more than one correct solution, while others might not have a correct solution.

After you answer a question in this section, you will NOT be able to return to it. As a result, these questions will not appear in the review screen.

A company's Dynamics 365 Commerce production instance is updated monthly as new versions of the software are released.

The company needs to identify any potential issues in new releases. They do not have developers to help with this initiative.

You need to implement a way to regression test scenarios.

Solution: Place data packages that are related to data task automation in the individual Dynamics Lifecycle Services (LCS) asset library.

Does the solution meet the goal?

- A. Yes
- B. No

Answer: A

Explanation:

Reference:

<https://docs.microsoft.com/en-us/dynamics365/fin-ops-core/dev-itpro/perf-test/rsat/rsat-overview>

NEW QUESTION 122

- (Topic 6)

Note: This question is part of a series of questions that present the same scenario. Each question in the series contains a unique solution that might meet the stated goals. Some question sets might have more than one correct solution, while others might not have a correct solution.

After you answer a question in this section, you will NOT be able to return to it. As a result, these questions will not appear in the review screen.

You are developing a file-based integration to Dynamics 365 for Finance and Operations.

Microsoft Excel files with 15,000 or more records need to be imported into the system periodically by individual users. The records need to be imported in full within a 5-minute approved window.

You need to determine how to accomplish the import into the system. Solution: Import the data by using the recurring data integrations API. Does the solution meet the goal?

- A. Yes
- B. No

Answer: A

Explanation:

References:

<https://docs.microsoft.com/en-us/dynamics365/fin-ops-core/dev-itpro/data-entities/integration-overview>

<https://docs.microsoft.com/en-us/dynamics365/fin-ops-core/dev-itpro/data-entities/data-management-api>

NEW QUESTION 125

- (Topic 6)

A company implements Dynamics 365 Finance.

The implementation team must build acceptance testing scripts to make sure that common business use

cases can be performed in the new system. They must use cases by stepping through required tasks, organized by functional hierarchy.

You need to create User Acceptance Testing (UAT) tests in Lifecycle Services (LCS) that can be easily repeatable.

What should you use?

- A. Business process modeler (BPM) synced with Microsoft Azure DevOps
- B. APQC Unified Library
- C. Usage profiler
- D. Configuration data manager

Answer: A

NEW QUESTION 129

HOTSPOT - (Topic 6)

You are preparing to import data into Dynamics 365 Finance.

You need to use the data management framework for the data import process. Which components should you use? To answer, select the appropriate options in the

answer area.

NOTE: Each correct selection a worth one pewit.

Answer Area



- A. Mastered
- B. Not Mastered

Answer: A

Explanation:

Box 1: data package

Data package - A single compressed file that contains a data project manifest and data files. This is generated from a data job and used for import or export of multiple files with the manifest.

Note: A data package for a Dynamics 365 Finance and Operations app can consist of one or many data entities. A typical data package consists of a group of entities for a specific task, process, or function. For example, the data entities that are required for general ledger setup might be part of one data package. The format of a data package is a compressed file that contains a package manifest, a package header, and any additional files for the data entities that are included.

Box 2: data job

Data job - A job that contains an execution instance of the data project, uploaded files, schedule (recurrence), and processing options.

NEW QUESTION 132

- (Topic 6)

You implement Dynamics 36b Supply Chain Management. You have over 2,000 vendor records. You configure vendor groups to differentiate international vendor's horn domestic vendors. You need to locate vendors in France with payment terms of 30 days.

- A. Use the global address book to locate the vendors.
- B. Use a successive quick filter for vendor group and payment terms.
- C. Create a report filtered by vendor group.
- D. Create an advanced filter on the All vendors list page

Answer: D

NEW QUESTION 136

- (Topic 6)

You implement Dynamic 365 Finance.

You must post a message to a Microsoft teams channel each time a write-off amount is over \$1,000 USD.

You need to determine which tools to use.

Which two tools should you use? Each correct answer presents part of the solution. NOTE: Each correct selection is worth one point.

- A. Power Apps
- B. Business Events
- C. Dynamics 365 Finance workflow
- D. Power Automate

Answer: AD

NEW QUESTION 140

- (Topic 6)

You are a Dynamic 365 Finance sales manager. You use a Power BI dashboard that shows near-real-time sales data from reports and tiles. It is impractical to keep switching between multiple application. You need to configure a way to access the Power BI reports within the Dynamic 365 Finance client. Solution: Include the power BI reports In a Power BI App and pin the Power BI App to your workspace. Does the solution meet the goal?

- A. Yes
- B. No

Answer: B

NEW QUESTION 145

- (Topic 6)
A company plans to set up an organizational hierarchy to manage organizational relationships. You need to identify which organizational purpose to use. What purpose can you assign to an organizational hierarchy?

- A. Centralized payments
- B. Financial reason code
- C. Cost center
- D. Price models

Answer: A

Explanation:

Reference:
<https://docs.microsoft.com/en-us/dynamics365/unified-operations/financials/cash-bank-management/set-up-centralized-payments>

NEW QUESTION 146

- (Topic 6)
You are working as a functional consultant in a new Dynamics 365 for Finance and Operations environment. Your organization conducts business within the United States, with offices in several states. The organization has legal entities defined for each state and must share common tables between entities. Each legal entity has the following setup:
? Users
? Products
? Customers
? Tax authorities
? Payment terms
? Human Resources data
? Site-specific stock ordering
You need to consolidate reports used for financial-consolidation reporting in a new legal entity. What should you do?

- A. Define the consolidation period
- B. Specify the range of product for consolidation
- C. Define Human Resources data
- D. Create users

Answer: A

NEW QUESTION 148

HOTSPOT - (Topic 5)
You must configure the master data for customers import to meet the applications and environment requirements. How should the master data for customer's import be configured? To answer, select the appropriate options in the answer area. NOTE: Each correct selection is worth one point.

Answer Area

Requirement	Confiuration
Number of entity mappings	<div><div>3</div><div>1</div><div>2</div><div>3</div></div>
Duplicate records	<div><div>View staging data option on the execution summary page</div><div>View staging data option on the execution summary page</div><div>Copy data to target</div><div>Skip staging</div></div>

- A. Mastered
- B. Not Mastered

Answer: A

Explanation:

Answer Area

Requirement

Number of entity mappings

Configuration

3
1
2
3

View staging data option on the execution summary page
View staging data option on the execution summary page
Copy data to target
Skip staging

Duplicate records

NEW QUESTION 153

HOTSPOT - (Topic 5)

You need to meet the project manager's requirements for testing.

What should you do? To answer, select the appropriate options in the answer area.

NOTE: Each correct selection is worth one point.

Requirement

Configuration

Document step

Add developer placeholder
RSAT optional settings
Preferred value instruction
User-supplied value label

Required control

RSAT configurations
Azure DevOps settings
Task recorder edit step
Hide this step

- A. Mastered
- B. Not Mastered

Answer: A

Explanation:

Box 1: Add developer placeholder.

Note: The user creating the test script must document the step in the test script that the specific validation script must be run for the developers.

Add developer placeholder lets the user add a placeholder step to the list of recorded steps. This placeholder step doesn't appear when the task guide is viewed, and it isn't run

during maintenance of a recording. It's used only by the Regression suite automation tool (RSAT) or the X++ code generator that enables an X++ test to be created from a task recording. When the code generator creates an X++ test, it automatically adds a method stub to the generated code. The developer can then add X++ code into this method stub. The automated code will call the validation when the generated test is run at the point in the recording where this placeholder was added.

Note: The project manager is concerned that a critical field must have validation scripts run against it during automated testing. The developers will be required to write the custom validation script. The user creating the test script must document the step in the test script that the specific validation script must be run for the developers.

Box 2: Task Recorder Edit Step

Note: The developers will be required to write the custom validation script.

Enriching steps in a recording

There are various options for enriching a step in a recording. For example, you can adjust the text that is associated with a step and add information about a specific step. This section describes the step enrichment capabilities that are available. To access these options, click the Edit step button on a specific step of a recording.

NEW QUESTION 154

- (Topic 5)

You need to configure the customer service representative's screen to meet the requirements.

Which three features must be configured? Each correct answer presents part of the solution.

NOTE: Each correct selection is worth one point.

- A. Funnel
- B. Favorites
- C. Charts
- D. Workspaces
- E. Security

Answer: ACE

NEW QUESTION 157

HOTSPOT - (Topic 5)
You must perform the data migration for User1 to meet the application and environment requirements.
What should you do? To answer, select the appropriate options in the answer area. NOTE: Each correct selection is worth one point.

Action	Option
Define data type	<div><div></div><div>Master</div><div>Transactional</div><div>Parametric</div></div>
Select migration method	<div><div></div><div>Manual only</div><div>Import only</div><div>Manual or import</div></div>

- A. Mastered
- B. Not Mastered

Answer: A

Explanation:

Action	Option
Define data type	<div><div></div><div>Master</div><div>Transactional</div><div>Parametric</div></div>
Select migration method	<div><div></div><div>Manual only</div><div>Import only</div><div>Manual or import</div></div>

NEW QUESTION 162

HOTSPOT - (Topic 5)
You need to determine the testing type for the activities.
Which testing type should you use? To answer, select the appropriate options in the answer area.
NOTE: Each correct selection is worth one point.

Answer Area

Testing	Type
Requirement 1	<div><div>Unit</div><div>Regression</div><div>End to end</div></div> <div>These are the selections for requirement 1.</div>
Requirement 2	<div><div>Unit</div><div>Regression</div><div>Functional</div><div>End to end</div></div>
Requirement 3	<div><div>Unit</div><div>Regression</div><div>End to end</div></div>

- A. Mastered
- B. Not Mastered

Answer: A

Explanation:

Testing	Type
Requirement 1:	Unit
	Regression
	End to end
Requirement 2:	Unit
	Regression
	Functional
	End to end
Requirement 3:	Unit
	Regression
	End to end

NEW QUESTION 165

- (Topic 5)
You must meet the requirements for frequently asked Questions (FAQs).
Which two features are required? Each correct answer presents part of the solution. NOTE: Cacti correct selection is worth one point.

- A. Power Apps app
- B. Remote assist
- C. Power Virtual Agents
- D. Microsoft Dataverse
- E. Azure Data Lake

Answer: AC

NEW QUESTION 166

- (Topic 6)
A parts suppliers provides several terabytes of data that must be imported into Dynamics 365 Finance in bulk.
Data operations must provide for insert operations and be asynchronous. You need to implement a data access technology.
Which data access technology should you use?

- A. AJAX
- B. Data management framework
- C. Dual-write
- D. OData APIs

Answer: B

NEW QUESTION 168

DRAG DROP - (Topic 6)
Your company is using a highly customized version of Dynamics 365 for Finance and Operations.
You have identified a new hotfix that will correct several important issues that have caused many user complaints.
You need to determine whether the hotfix will break any customizations.
Which four actions should you perform in sequence? To answer, move the appropriate actions from the list of actions to the answer area and arrange them in the correct order.

Actions

Upload the hotfix to Lifecycle Services

Download the hotfix from Lifecycle Services

Check in the entire hotfix as pending change and schedule and deploy it to the production environment

Build the hotfix in the development environment and accept changes

Install the hotfix in your Microsoft Azure DevOps application development environment in an Active state

Install the hotfix in your Microsoft Azure DevOps application development environment in a Pending state

Answer Area

- A. Mastered
- B. Not Mastered

Answer: A

Explanation:

References:

<https://docs.microsoft.com/en-us/dynamics365/unified-operations/dev-itpro/migration-upgrade/install-metadata-hotfix-package>

NEW QUESTION 173

- (Topic 6)

Note: This question is part of a series of questions that present the same scenario. Each question in the series contains a unique solution that might meet the stated goals. Some question sets might have more than one correct solution, while others might not have a correct solution.

After you answer a question in this section, you will NOT be able to return to it. As a result, these questions will not appear in the review screen.

You are a functional consultant who is deploying Dynamics 365 for Finance and Operations.

The implementation must:

- ? Use an iterative approach
- ? Integrate with real-world data
- ? Enforce standards and governance
- ? Implement multiple rounds of feedback

You need to deploy and validate the implementation.

Solution: Perform a fit-gap analysis. Configure Dynamics 365 for Finance and Operations to address the functional gap. Deploy the configuration. Does the solution meet the goal?

- A. Yes
- B. No

Answer: A

NEW QUESTION 177

DRAG DROP - (Topic 6)

A company uses Dynamic 365 Supply chain management. A customer call customer service to report that a product is defective.

The customer service process dictates that a format set of activities needs to occur based on the specific incident.

You need to implement a repeatable process for the customer service representatives. Which functionality should you use? To answer, drag the appropriate functionalities to the

correct requirements. Each functionality may be used once, more than once, or not at all,

You may need to drag the split bar between panes or scroll to view content. NOTE: Each correct selection is worth one point.

Functionalities

Case management

Power Virtual Agents

Workflow

Answer Area

Requirement

Manage the series of actions.

Provide instructions on how to handle the customer service call.

Functionality

Functionality

- A. Mastered
- B. Not Mastered

Answer: A

Explanation:

Functionalities

Case management

Power Virtual Agents

Workflow

Answer Area

Requirement

Manage the series of actions.

Provide instructions on how to handle the customer service call.

Functionality

Workflow

Power Virtual Agents

NEW QUESTION 178

- (Topic 6)

You are a Dynamics 365 for Finance and Operations implementation team lead.

A series of test plans need to be created and tracked during a company's development phase. Multiple users will be testing multiple aspects as code is released. Issues and remediations to bugs will also need to be tracked.

You need to identify Microsoft solutions that offer these capabilities. What should you use?

- A. Microsoft Azure DevOps
- B. Dynamics 365 for Finance and Operations
- C. Solution management
- D. Lifecycle Services (LCS)

Answer: A

NEW QUESTION 183

- (Topic 6)

You are a Dynamics 365 for Finance and Operations system administrator.

A user is reporting an issue with the Sales Order form. The UI for the form is not loading properly, and there are some performance issues. The object was working fine until the most recent update release. The who personalized this form is using Microsoft Edge. No other users are reporting issues.

You need to resolve the issue.

- A. Delete the sales from project in the usage data form.
- B. Export, delete, then reimport the usage data for the sales form object.
- C. Disable and then re-enable the user.
- D. Switch to Microsoft Edge instead of internet Explorer 11.

Answer: D

NEW QUESTION 187

HOTSPOT - (Topic 6)

You are a system administrator using Dynamics 365 for Finance and Operations. You are responsible for troubleshooting workflows.

You need to determine where workflows are failing based on error messages.

Which runtime is raising the error when the following activity and error occurs? To answer, select the appropriate runtime in the answer area.

NOTE: Each correct selection is worth one point.

Answer Area

Activity and error

A user submits an expense report by clicking the Submit button on one of the workflow controls. An error occurs.

.NET Interop from X++ receives the message and starts a new workflow instance via Windows Workflow Foundation. An error occurs.

The messaging batch job reads the Workflow started message from the message queue and invokes the application event handler to process a workflow started event. An error occurs.

Runtime

☐ Managed workflow runtime

☐ X++ workflow runtime

☐ X++ workflow runtime

☐ Managed workflow runtime

☐ Managed workflow runtime

☐ X++ workflow runtime

- A. Mastered
- B. Not Mastered

Answer: A

Explanation:

References:

<https://docs.microsoft.com/en-us/dynamics365/unified-operations/fin-and-ops/organization-administration/workflow-system-architecture>

NEW QUESTION 192

HOTSPOT - (Topic 6)

You are implementing Dynamics 365 Supply Chain Management.

You must ensure employee address information is only accessible to users in the human resources department.

You need to configure the solution.

How should you configure the solution? To answer, select the appropriate options in the answer area.

NOTE: Each correct selection is worth one point.

Answer Area

Requirements	Configuration
Hide employee records.	<div><input type="checkbox"/> Mark the address as Private.</div> <div><input type="checkbox"/> Mark the address as Primary.</div> <div><input type="checkbox"/> Assign the primary address to the address book.</div> <div><input type="checkbox"/> Create a relationship between employee records and the address book.</div>
Enable human resources access.	<div><input type="checkbox"/> Assign security roles to Private location security roles.</div> <div><input type="checkbox"/> Assign teams to the address book.</div> <div><input type="checkbox"/> Assign the primary address to the address book.</div> <div><input type="checkbox"/> Assign team members to the address book.</div>

- A. Mastered
- B. Not Mastered

Answer: A

Explanation:

Answer Area

Requirements	Configuration
Hide employee records.	<div><input type="checkbox"/> Mark the address as Private.</div> <div><input type="checkbox"/> Mark the address as Primary.</div> <div><input type="checkbox"/> Assign the primary address to the address book.</div> <div><input type="checkbox"/> Create a relationship between employee records and the address book.</div>
Enable human resources access.	<div><input type="checkbox"/> Assign security roles to Private location security roles.</div> <div><input type="checkbox"/> Assign teams to the address book.</div> <div><input type="checkbox"/> Assign the primary address to the address book.</div> <div><input type="checkbox"/> Assign team members to the address book.</div>

NEW QUESTION 196

HOTSPOT - (Topic 6)

You support custom functionality in Dynamics 365 Finance.

Your company requires that all solution be fully tested before they are deployed to production.

You need to use different testing types prior to deployment.

Which testing type should you use? To answer, select the appropriate options in the answer area

NOTE: Each correct selection is worth one point.

Answer Area

Requirement	Testing type
Isolate and test new features individually.	Unit
Test whether new features break existing capabilities.	Regression
Validate that multiple new features meet requirements.	Functional
Test whether new features break existing capabilities.	End to end
Validate that multiple new features meet requirements.	Unit
Test all components of the solution together.	Regression
Validate that multiple new features meet requirements.	Functional
Test all components of the solution together.	End to end
Validate that multiple new features meet requirements.	Unit
Test all components of the solution together.	Regression
	Functional
	End to end

- A. Mastered
- B. Not Mastered

Answer: A

Explanation:

Answer Area

Requirement	Testing type
Isolate and test new features individually.	Unit
Test whether new features break existing capabilities.	Regression
Validate that multiple new features meet requirements.	Functional
Test whether new features break existing capabilities.	End to end
Validate that multiple new features meet requirements.	Unit
Test all components of the solution together.	Regression
Validate that multiple new features meet requirements.	Functional
Test all components of the solution together.	End to end
Validate that multiple new features meet requirements.	Unit
Test all components of the solution together.	Regression
	Functional
	End to end

NEW QUESTION 199

DRAG DROP - (Topic 6)

You are a Dynamics 365 for Finance and Operations system administrator.
The finance department is experiencing electronic reporting submittal issues. You must use all available sources to troubleshoot those issues.
You need to identify potential hotfixes.
Which four actions should you perform in sequence? To answer, move the appropriate actions from the list of actions to the answer area and arrange them in the correct order.

Actions

Log in to Lifecycle Services (LCS).

Use the Issue search tile.

Select a project to work in.

Enter the issue case number.

Enter search terms.

Create a new case.

Answer area

>

<

^

v

- A. Mastered
- B. Not Mastered

Answer: A

Explanation:

Actions	Answer area
Log in to Lifecycle Services (LCS).	Log in to Lifecycle Services (LCS).
Use the Issue search tile.	Use the Issue search tile.
Select a project to work in.	Select a project to work in.
Enter the issue case number.	Enter search terms.
Enter search terms.	Enter search terms.
Create a new case.	

NEW QUESTION 204

- (Topic 6)

A company implements Dynamics 365 Supply Chain Management. The company is starting a short-term project that has a rigid budget. The warehouse manager requests an environment that has demo data so that users can look at samples of the warehouse module. A cloud scale unit is not required. You need to recommend a cost-effective environment. What should you recommend?

- A. Tier 3
- B. Tier 1
- C. Tier 2
- D. Tier 4

Answer: B

Explanation:

Environment types

You can use the following environment types for your project:

* Environment image (VHD) – These additional Tier-1 environments are hosted on- premises by using a virtual hard disk (VHD) that can be downloaded from Microsoft Dynamics Lifecycle Services (LCS).

* Standard – This environment is included in the standard offer and is managed by Microsoft in a Microsoft subscription. Standard environments include the production environment and a Tier-2 Standard Acceptance Test environment.

* Add-on – The add-on environments are in a Microsoft-managed subscription that the customer has purchased in addition to the standard offer. For example, an add-on environment might be an additional Tier-4 environment for performance testing.

* Cloud-hosted – Cloud-hosted environments are additional environments that are managed by the customer or partner in a customer or partner Microsoft Azure subscription. A cloud-hosted environment can include a Tier-1 demo environment.

Reference: <https://learn.microsoft.com/en-us/dynamics365/fin-ops-core/fin-ops/imp-lifecycle/environment-planning>

NEW QUESTION 206

DRAG DROP - (Topic 6)

A company implements Dynamics 365 Finance. The company wants to automate some standard business practices and processes into the system.

A sales representative calls on a new customer and obtains an order. As part of the process, the representative must follow the standard procedure for onboarding a new customer by uploading the customer's credit application to the company OneDrive for processing, create the new customer record, set a default minimum credit limit, and enter the new order using the company's streamlined new-customer form.

After the credit application is approved by the finance manager, and the customer's credit limit is updated in the system, the order will be released for fulfilment. You need to determine which tool or functionality best fits the scenario.

Which feature or functionality should you use? To answer, drag the appropriate setting to the correct drop targets. Each source may be used once, more than once, or not at all. You may need to drag the split bar between panes or scroll to view content.

NOTE: Each correct selection is worth one point.

Features or functionalities	Answer Area	
	Scenario	Feature or functionality
Business process flow	Guide the salesperson through creating the new customer record and order.	
Workflow	Notify the finance manager of a new credit application by using email.	
Microsoft Flow	Automatically update the order status when the credit limit is updated.	
Task Guide		

- A. Mastered
- B. Not Mastered

Answer: A

Explanation:

Answer Area	
Features or functionalities	Scenario
Business process flow	Guide the salesperson through creating the new customer record and order.
Workflow	Notify the finance manager of a new credit application by using email.
Microsoft Flow	Automatically update the order status when the credit limit is updated.
Task Guide	

Answer Area	
Scenario	Feature or functionality
Guide the salesperson through creating the new customer record and order.	Task Guide
Notify the finance manager of a new credit application by using email.	Microsoft Flow
Automatically update the order status when the credit limit is updated.	Workflow

NEW QUESTION 208

SIMULATION - (Topic 6)

You are a functional consultant for Contoso Entertainment System USA (USMF). You plan to create several customer approval workflows. You need to configure the system to support customer approvals. To complete this task, sign in to the Dynamics 365 portal.

- A. Mastered
- B. Not Mastered

Answer: A

Explanation:

- ? Navigate to Accounts receivable > Setup > Accounts receivable parameters.
- ? Click the General tab.
- ? Expand the Customer Approval section.
- ? Click the slider named Enable customer approvals to Yes.
- ? Select the entities for which you wish to enable customer approvals.

NEW QUESTION 210

- (Topic 6)

You are a Dynamics 365 for Finance and Operations systems analyst.

A user configures an alert for purchase orders that have a delivery date of two weeks away. However, batch alerts are not being sent.

You need to troubleshoot why alerts are not processing.

What two actions may be the cause for alerts not being sent? Each correct answer presents a complete solution.

NOTE: Each correct selection is worth one point.

- A. The date format in the Dynamics 365 tenant does not match the format in the client device-CD
- B. A batch processing window may be set up for that batch job.
- C. The change-based alert has expired.
- D. There may not be a batch server assigned to the batch job.

Answer: CD

Explanation:

Reference:

<https://community.dynamics.com/ax/b/shafeealabadiaxtutorials/posts/ax-2012-alert-management-part-ii-due-date-alerts>

NEW QUESTION 211

SIMULATION - (Topic 6)

You are a functional consultant for Contoso Entertainment System USA (USMF).

The pallets used by USMF can contain 12 boxes. You need to create a unit of conversion for the boxes.

To complete this task, sign in to the Dynamics 365 portal.

- A. Mastered
- B. Not Mastered

Answer: A

Explanation:

You need to create a unit of measure for the pallet and another unit of measure for the box (if they don't already exist). Then you create a unit conversion.

Create a unit of measure for pallet and box:

? Go to Navigation pane > Modules > Product information management > Released product maintenance.

? Click Units.

? Click New.

? In the Unit field, type a value. Enter the ID or symbol to use when referring to the unit of measure.

? In the Description field, type a value such as Pallet. Enter a descriptive name for the unit of measure in the system language.

? In the Unit class field, select Quantity

? In the Decimal precision field, enter a number. Specify the number of decimals that the converted unit of measure must be rounded to when a calculation is completed

for the unit of measure.

? Click Save.

? Repeat the above steps for Box.

Define unit conversion rules

? On the Action Pane, click Unit conversions. Define rules for converting the unit of measure to and from other units of measure in the selected unit class.

? Click New to open the drop dialog.

- ? In the Factor field, enter 12. Conversion factor between the From unit (Pallet) and the To unit (Box).
- ? In the To unit field, select Box.
- ? In the Rounding field, select To nearest.
- ? Click OK.
- ? Close the page.

NEW QUESTION 214

HOTSPOT - (Topic 6)

You need to integrate Dynamics 365 Finance data entities with other data stores.

Which integration technologies should you use? To answer, select the appropriate options in the answer area.

NOTE: Each correct selection is worth one point.

Answer Area

Data stores	Integration technology
Microsoft Office	<div>▼</div> <div>Custom Service</div> <div>Data Management Pipeline</div> <div>Dual-write</div> <div>OData APIs</div>
Dynamics 365 mobile app	<div>▼</div> <div>Custom Service</div> <div>Data Management Pipeline</div> <div>Dual-write</div> <div>OData APIs</div>
Interactive file-based import/export	<div>▼</div> <div>Custom Service</div> <div>Data Management Pipeline</div> <div>Dual-write</div> <div>OData APIs</div>
Recurring files	<div>▼</div> <div>Custom Service</div> <div>Data Management Pipeline</div> <div>Dual-write</div> <div>OData APIs</div>
Recurring queues	<div>▼</div> <div>Custom Service</div> <div>Data Management Pipeline</div> <div>Dual-write</div> <div>OData APIs</div>

- A. Mastered
- B. Not Mastered

Answer: A

Explanation:

Answer Area

Data stores	Integration technology
Microsoft Office	<div>▼</div> <div>Custom Service</div> <div>Data Management Pipeline</div> <div>Dual-write</div> <div>OData APIs</div>
Dynamics 365 mobile app	<div>▼</div> <div>Custom Service</div> <div>Data Management Pipeline</div> <div>Dual-write</div> <div>OData APIs</div>
Interactive file-based import/export	<div>▼</div> <div>Custom Service</div> <div>Data Management Pipeline</div> <div>Dual-write</div> <div>OData APIs</div>
Recurring files	<div>▼</div> <div>Custom Service</div> <div>Data Management Pipeline</div> <div>Dual-write</div> <div>OData APIs</div>
Recurring queues	<div>▼</div> <div>Custom Service</div> <div>Data Management Pipeline</div> <div>Dual-write</div> <div>OData APIs</div>

NEW QUESTION 215

- (Topic 6)

A company uses Dynamics 365 Finance.

User1 is an approver of expense reports. User1 will be on vacation next week.

You need to configure the system to assign a user named User2 temporary permissions to review and approve expense report submissions while User1 is on vacation.

What should you do?

- A. Assign User2 as the approver for expense reports using the workflow designer.
- B. Assign User2 the same user security roles as User1.
- C. Create a delegation rule for User1 for the duration of the vacation period.
- D. Create a delegation rule for User2 for the duration of the vacation period.

Answer: C

Explanation:

Reference:

<https://docs.microsoft.com/en-us/dynamics365/fin-ops-core/fin-ops/organization-administration/tasks/delegate-work-items-workflow>

NEW QUESTION 217

HOTSPOT - (Topic 6)

A company implements Dynamics 365 for Finance and Operations. It must set up the system to be ready for entering inventory items. You need to select which unit of conversion fits the scenario.

Which conversion types should you use? To answer, select the appropriate options in the answer area.

NOTE: Each correct selection is worth one point.

Answer Area	Scenario	Conversion type
<input type="checkbox"/>	Car paint colors and their ingredients are purchased in barrels, stocked in ounces, and sold in gallons.	<div>Standard</div> <div>Intra-class</div> <div>Inter-class</div>
<input type="checkbox"/>	Steel is purchased in tons, stocked in pounds, and sold in linear feet.	<div>Standard</div> <div>Intra-class</div> <div>Inter-class</div>
<input type="checkbox"/>	Bolts and nuts are purchased in pounds, stocked as individual units, and sold in boxes.	<div>Standard</div> <div>Intra-class</div> <div>Inter-class</div>

- A. Mastered
- B. Not Mastered

Answer: A

Explanation:

References:

<https://docs.microsoft.com/en-us/dynamicsax-2012/appuser-itpro/set-up-units-and-unit-conversions-retail-essentials>

NEW QUESTION 219

- (Topic 6)

You are implementing Dynamics 365 Supply Chain Management. You have a CSV file that contains two million records. You need to import the file into Dynamics 365 Supply Chain Management without manual manipulation of the data. What should you use?

- A. Microsoft Excel Add-In
- B. Microsoft SQL Server Integration Services
- C. Classic data integration
- D. Data management import job

Answer: D

NEW QUESTION 222

- (Topic 6)

Note: This question is part of a series of questions that present the same scenario. Each question in the series contains a unique solution that might meet the stated goals. Some question sets might have more than one correct solution, while others might not have a correct solution.

After you answer a question in this section, you will NOT be able to return to it. As a result, these questions will not appear in the review screen.

You are developing a file-based integration to Dynamics 365 for Finance and Operations. Microsoft Excel files with 15,000 or more records need to be imported into the system

periodically by individual users. The records need to be imported in full within a 5-minute approved window.

You need to determine how to accomplish the import into the system. Solution: Import the data by using the Excel Add-in.

Does the solution meet the goal?

- A. Yes
- B. No

Answer: B

Explanation:

References:

<https://docs.microsoft.com/en-us/dynamics365/fin-ops-core/dev-itpro/data-entities/integration-overview>

<https://docs.microsoft.com/en-us/dynamics365/fin-ops-core/dev-itpro/data-entities/data-management-api>

NEW QUESTION 225

SIMULATION - (Topic 6)

You are a functional consultant for Contoso Entertainment System USA (USMF).

The legal department plans to publish all legal terms to a website that has a URL of <https://www.contoso.com/legalterms.html>.

You need to ensure that USMF uses the website for legal terms. To complete this task, sign in to the Dynamics 365 portal.

- A. Mastered
- B. Not Mastered

Answer: A

Explanation:

? Navigate to the System parameters page and click Legal and Privacy.

? In the Legal Terms section, enter the URL: <https://www.contoso.com/legalterms.html>.

? Click Save to save the changes.

NEW QUESTION 229

- (Topic 6)

Note: This question is part of a series of questions that present the same scenario. Each question in the series contains a unique solution that might meet the stated goals. Some question sets might have more than one correct solution, while others might not have a correct solution.

After you answer a question in this section, you will NOT be able to return to it. As a result, these questions will not appear in the review screen.

You are a Dynamics 365 for Finance and Operations security administrator.

When testing security setups, users report that certain roles are gaining access to sensitive information via a form in the system.

You must investigate which user roles have what visibility and access level to system objects, and then send a report to the implementation team to address security compliance concerns.

You need to report the information from the system. Solution: Generate the Security role access report. Does the solution meet the goal?

- A. Yes
- B. No

Answer: A

Explanation:

Reference:

<https://docs.microsoft.com/en-us/dynamics365/fin-ops-core/dev-itpro/sysadmin/security-reports>

NEW QUESTION 230

- (Topic 6)

You are implement Dynamic 365 Finance.

You must initiate a custom process when a new invoice journal is posted. The custom must complete actions in external systems.

You need to select a business event to trigger the custom process. What should you use?

- A. Microsoft Dataverse
- B. Dynamics 365 Customer Engagement
- C. Azure DevOps
- D. Power Automate

Answer: D

NEW QUESTION 232

- (Topic 6)

You are a systems administrator at a company that has implemented Dynamics 365 for Finance and Operations.

New employees are starting at the company.

You need to extend the electronic signatures functionality to them.

Which two actions should you perform? Each answer presents part of the solution. NOTE: Each correct selection is worth one point.

- A. On the Email parameters page, specify that SSL is required
- B. Specify the user's email address
- C. In License configuration, enable Maintenance mode
- D. Select the Electronic signature check box

Answer: CD

Explanation:

Reference:

<https://docs.microsoft.com/en-us/dynamics365/unified-operations/fin-and-ops/organization-administration/tasks/set-up-electronic-signatures>

NEW QUESTION 237

- (Topic 6)

Dynamics 365 Finance is implemented at your company.

Users in the accounts payable roles and inventory management roles can edit the general ledger details for all departments. These roles must not be able to change the inventory on hand or be able to pay a parts supplier. The users have physical access to warehouses.

You attempt to remove the users from the roles and see that the users are then added back to the roles.

Users must not be able to be added to both roles. Users in a single role must be able to perform their duties.

You need to ensure that users are assigned to the proper roles.

What are two possible ways to achieve this goal? Each correct answer presents a complete solution.

NOTE: Each correct selection is worth one point.

- A. Remove the privileges from the roles.
- B. Include the users in automatic assignment.
- C. Set up segregation of duties for the users.
- D. Remove segregation of duties for the users.
- E. Exclude the users from automatic assignment.

Answer: BC

Explanation:

B: To use anything other than common capabilities in finance and operations apps, users must be assigned to security roles. You can assign users to roles automatically, based on rules and business data, exclude users from automatic role assignment, or add users to roles manually.
C: You can set up rules to separate tasks that must be performed by different users. This concept is named segregation of duties.
Reference: <https://docs.microsoft.com/en-us/dynamics365/fin-ops-core/dev-itpro/sysadmin/tasks/assign-users-security-roles>
<https://docs.microsoft.com/en-us/dynamics365/fin-ops-core/dev-itpro/sysadmin/tasks/set-up-segregation-duties>

NEW QUESTION 240

DRAG DROP - (Topic 6)

A client wants to automate approvals for various business processes. You need to use workflow configuration to meet the requirements.
Which workflow configuration should you use? TO answer, drag the appropriate configurations to the correct requirements. Each configuration may be used once, more than once, or not at all. You may need to drag the split bar between panes or scroll to view content.
NOTE: Each correct selection is worth one point.

Configurations

Hierarchy

Participant

User

Workflow user

Answer Area

Requirement	Configuration
When a purchase requisition is submitted, it should go to the employee's manager.	<div>Configuration</div>
When an expense report is submitted, it should go to a user group of managers.	<div>Configuration</div>

- A. Mastered
- B. Not Mastered

Answer: A

Explanation:

Box 1: Hierarchy
Hierarchy: Users in a specific organizational hierarchy.
? After you select Hierarchy, on the Hierarchy selection tab, in the Hierarchy type list, select the type of hierarchy to assign the step to.
? The system must retrieve a range of user names from the hierarchy. These names represent users that the step can be assigned to.
Box 2: Participant
Participant: Users who are assigned to a specific group or role.
After you select Participant, on the Role based tab, in the Type of participant list, select the type of group or role to assign the step to.
In the Participant list, select the group or role to assign the step to.

NEW QUESTION 243

HOTSPOT - (Topic 6)

A company implements Dynamics 365 Supply Chain Management and Dynamics 365 Finance. The company adds new vendors to the system. A purchasing agent is responsible for populating all company-mandated fields on new vendor records.
Once the vendor is created, the purchasing manager must approve the vendor record before the vendor record can be used in any purchase requisitions. Every Friday, the purchasing director must receive an email with the list of new vendors added to the system in the prior week.
You need to configure the system.
Which tools should you use? To answer, select the appropriate options in the answer area. NOTE: Each correct selection is worth one point.

Answer Area

Requirement	Tool
Assist a new purchasing agent with vendor creation.	<div><div>Task guide</div><div>Task guide</div><div>Power Automate</div><div>Workflow</div><div>Business Process Modeler</div></div>
Send information about a new vendor to a purchasing manager for approval.	<div><div>Workflow</div><div>Workflow</div><div>Business Process Modeler</div><div>Data task automation</div><div>Regression suite automation tool</div></div>
Send the purchasing manager an email every Friday with new vendor information.	<div><div>Power Automate</div><div>Power Automate</div><div>Workflow</div><div>Data task automation</div></div>

- A. Mastered
- B. Not Mastered

Answer: A

Explanation:

Answer Area

Requirement	Tool
Assist a new purchasing agent with vendor creation.	<div>Task guide</div> <div>Task guide</div> <div>Power Automate</div> <div>Workflow</div> <div>Business Process Modeler</div>

| Send information about a new vendor to a purchasing manager for approval. | Workflow Workflow Business Process Modeler Data task automation Regression suite automation tool |
| Send the purchasing manager an email every Friday with new vendor information. | Power Automate Power Automate Workflow Data task automation |

NEW QUESTION 246

- (Topic 6)

You assign security roles to users in a company. New purchasing managers must be able to have a single role assigned to them to accomplish a tasks. The purchasing manager role has the following requirements;

- Must be standalone and not -impacted when another security role is changed.
- Must be able to view payment journals but not edit them.

The purchasing manager role does not currently have access to the payment journals. You need to edit the security configuration on to meet the requirements. What Should you do?

A. Create a privilege for the read-only access for the payment journal tables.

B. Assign an existing security role with read-only access to the payment journal as a sub role.

C. Create a new security role for the payment journal, access,

D. Create an Extension Data Security (XOS) policy and add the payment journal table as a constrained table.

Answer: C

NEW QUESTION 251

DRAG DROP - (Topic 6)

A company is implementing Dynamics 365 Finance and preparing for go-live. You need to thoroughly test the system. Which tools should you use? To answer, drag the appropriate tools to the correct scenarios. Each tool may be used once, more than once, or not at all. You may need to drag the split bar between panes or scroll to view content.

NOTE: Each correct selection is worth one point.

Tools	Scenario	Tool
Business process modeler	A developer needs to test code.	
Data task automation	A procurement analyst needs to test the purchase order entry process.	
RSAT	A system engineer needs to test integration with a third-party warehouse solution.	
SysTest		

- A. Mastered
- B. Not Mastered

Answer: A

Explanation:

Tools	Scenario	Tool
Business process modeler	A developer needs to test code.	SysTest
Data task automation	A procurement analyst needs to test the purchase order entry process.	RSAT
RSAT	A system engineer needs to test integration with a third-party warehouse solution.	Data task automation
SysTest		

NEW QUESTION 252

- (Topic 6)

A company implements Dynamics 365 for Finance and Operations. The company wants to utilize Case management to track project issues and risks and associate them to the projects. Project managers will be responsible for managing the new cases. You need to configure the system. What should you do?

- A. Create case subcategories named Issue and Risk._
- B. Create parent case categories named Issue and Risk.
- C. Create case activities for Issue and Risk-
- D. Create case category security roles named Issue and Risk and assign them to the Project managers duty.

Answer: A

NEW QUESTION 256

- (Topic 6)
A company implements cymes 365 Finance on-premises. The company uses Microsoft Offer 2007.
The country/region address verifies a document originates must be included in the tower of Documents. Users must be able to edit the address for a document by using Microsoft Word Online.
You need to implement Busmen Document Management (BDM).
Which Two actions should you perform? Each correct answer present part of the solution

- A. Create a Power Automate cloud flow for each BDM template.
- B. Upgrade Office 2007 to Microsoft office 2019.
- C. Migrate the on-premises deployment to the cloud.
- D. Upgrade Office 2007 to Microsoft Office 365.
- E. Create a business process flow for each BDM template

Answer: AE

NEW QUESTION 260

DRAG DROP - (Topic 6)
You are a Dynamics 365 for Finance and Operations system administrator for your company.
The company sets up a new legal entity and wants to update the main page of the entity with a large banner containing the company logo.
You need to configure the new legal entity to display this.
Which four actions should you perform in sequence? To answer, move the appropriate actions from the list of actions to the answer area and arrange them in the correct order.

Actions

Change the Dashboard company image type to Banner

Verify that the Dashboard company image type is set to Default

Select the new image

Use the Legal entities form

Use the Parameters form in the Organizational administration module

Edit the form

Answer Area

<

>

- A. Mastered
- B. Not Mastered

Answer: A

Explanation:
References:
<https://docs.microsoft.com/en-us/dynamics365/unified-operations/fin-and-ops/get-started/tasks/change-banner-or-logo>

NEW QUESTION 263

HOTSPOT - (Topic 6)
A company uses May 1 as the start of its fiscal year.
The company's management needs to define fiscal calendars and date intervals for financial activities and financial reporting.
You need to set up fiscal calendars and date intervals and understand how they are used in financial accounting.
Which of the following attributes or purposes does each of the data configurations have? To answer, select the appropriate configuration in the answer area.
NOTE: Each correct selection is worth one point.

Date configurations	Attributes
Fiscal calendar	<div><div></div><div>▼</div></div> <div>Is an optional setup</div> <div>Is a mandatory setup</div> <div>Is company specific</div> <div>Contains only one fiscal year</div>
Date interval	<div><div></div><div>▼</div></div> <div>Is an optional setup</div> <div>Is a mandatory setup</div> <div>Used by one legal entity only</div> <div>Can cross different fiscal calendars</div>

Date configurations	Purposes
Fiscal calendar	<div><div></div><div>▼</div></div> <div>Sales calendar</div> <div>Fixed asset calendar</div> <div>Warehouse calendar</div> <div>Procurement calendar</div>
Date interval	<div><div></div><div>▼</div></div> <div>Easy date range selection</div> <div>Mark a date range for journal adjustments</div> <div>Mark a date for financial auditing</div> <div>Limit posting date range</div>

- A. Mastered
- B. Not Mastered

Answer: A

Explanation:

References:
<https://docs.microsoft.com/en-us/dynamics365/unified-operations/financials/budgeting/fiscal-calendars-fiscal-years-periods>

NEW QUESTION 268

DRAG DROP - (Topic 6)

You are planning to perform testing during an implementation of Dynamics 365 Finance. You need to identify the appropriate tools to support the testing. Which tools should you use? To answer, drag the appropriate tools to the correct requirements. Each tool may be used once, more than once, or not at all. You may need to drag the split bar between panes or scroll to view content.
NOTE: Each correct selection is worth one point.

Answer Area

Tools	Scenario	Tool
Business process modeler	A developer needs to test code.	
Data task automation	A procurement analyst needs to test the purchase order entry process.	
RSAT	A system engineer needs to test integration with a third-party warehouse solution.	
SysTest		

- A. Mastered
- B. Not Mastered

Answer: A

Explanation:

Answer Area

Tools	Scenario	Tool
Business process modeler	A developer needs to test code.	SysTest
Data task automation	A procurement analyst needs to test the purchase order entry process.	RSAT
RSAT	A system engineer needs to test integration with a third-party warehouse solution.	Data task automation
SysTest		

NEW QUESTION 269

HOTSPOT - (Topic 6)

A company implements Dynamics 365 for Finance and Operations and uses Lifecycle Services (LCS). The company uses both standard and customized functionality.

Testers have reported problems using the recent User Acceptance Testing (UAT) round. You need to resolve these issues before UAT can proceed.

Which tools should you use? To answer, select the appropriate options in the answer area. NOTE: Each correct selection is worth one point.

Issue	LCS tool
A UAT tester cannot add a newly created bill of materials (BOM) into a production order.	<div><div></div><div>Issue search</div><div>Usage profiler</div><div>System diagnostics</div></div>
A UAT tester finds an error in the company's process to create a new vendor.	<div><div></div><div>Business process modeler</div><div>Customization analysis</div><div>Issue search</div></div>

- A. Mastered
- B. Not Mastered

Answer: A

Explanation:

Issue	LCS tool
A UAT tester cannot add a newly created bill of materials (BOM) into a production order.	<div><div></div><div>Issue search</div><div>Usage profiler</div><div>System diagnostics</div></div>
A UAT tester finds an error in the company's process to create a new vendor.	<div><div></div><div>Business process modeler</div><div>Customization analysis</div><div>Issue search</div></div>

NEW QUESTION 271

- (Topic 6)

You are a Dynamics 365 for Finance and Operations systems administrator.

Your company needs to document and test all possible scenarios for a given implementation. Implementation gaps need to be documented using the tool available for tracking and linking to delivered extensions.

You need to identify the correct tool to accomplish this. What should you use?

- A. APQC Unified Libraries
- B. Shared asset library
- C. Business process modeler (BPM)
- D. Microsoft Azure DevOps

Answer: C

NEW QUESTION 274

- (Topic 6)

A company uses Dynamics 365 Finance. You configure a standard workflow for travel requisitions approvals. You configure the workflow which requires a single approver. You configure a pool of five managers to approve all travel requisitions. Managers must submit their own travel requisitions. A separate manager must approve the travel requisition. You need to ensure the system prevents managers from approving their own travel requisitions. What should you do?

- A. Create an escalation path for the Approve travel requisition step of the travel requisition workflow.
- B. Configure an activation condition on the travel requisition workflow to prevent activation for managers.
- C. Set the value of the Disallow approval by submitter option to Yes.
- D. Configure a condition to prevent the approval step from running when the originator is a manager.

Answer: C

Explanation:

Specify a final approver

You can designate a final approver for scenarios where the approver is the person who submitted the document for approval and the "disallow approval by submitter" is being used. Follow these steps to specify a final approver.

? In the workflow editor, right-click the approval element, and then select Properties to open the Properties form.

? In the left pane, click Advanced settings.

? Select the Use final approver check box.

? In the list, select a user to be the final approver.

Reference: <https://learn.microsoft.com/en-us/dynamics365/fin-ops-core/fin-ops/organization-administration/configure-approval-process-workflow>

<https://learn.microsoft.com/en-us/dynamics365/fin-ops-core/fin-ops/organization-administration/configure-approval-step-workflow>

NEW QUESTION 277

HOTSPOT - (Topic 6)

A company uses finance and Operations apps.

The company wants to use Power BI to view the actuals versus budget amounts of the current fiscal year. This requires handling several million transactions.

Some data must be near-real-time while other data must be updated every 10 minutes. You need to identify which solution components meet these requirements.

Which component should you use for each requirement? To answer, select the appropriate options in the answer area.

NOTE: Each correct selection is worth one point.

Answer Area

Requirement	Component
View large data sets requiring near-real-time data that is optimized for reporting.	<div>Transaction DB</div> <div>Common Data Service</div> <div>Entity Store</div> <div>Dynamics 365 entities</div>
Allow the data to refresh every 10 minutes.	<div>Aggregate Measurements</div> <div>Power BI DirectQuery</div> <div>Common Data Service</div> <div>Business Events</div>

- A. Mastered
- B. Not Mastered

Answer: A

Explanation:

Answer Area

Requirement	Component
View large data sets requiring near-real-time data that is optimized for reporting.	<div>Transaction DB</div> <div>Common Data Service</div> <div>Entity Store</div> <div>Dynamics 365 entities</div>
Allow the data to refresh every 10 minutes.	<div>Aggregate Measurements</div> <div>Power BI DirectQuery</div> <div>Common Data Service</div> <div>Business Events</div>

NEW QUESTION 279

- (Topic 6)

A company is implementing Dynamics 365 Supply Chain Management.

The company has a customer who is also a vendor. If the customer's address changes the company must make a single change. The change must be reflected for both the customer and vendor records.

You need to configure the system for the customer and vendor address. What should you do?

- A. Create a single party record tanked to Doth the customer and vendor records.
- B. Create a single contact that is scared between the customer and vendor record.
- C. Create separate parry records for both the customer and vendor records.
- D. Create separate party records with a single relationship defined between them

Answer: A

NEW QUESTION 281

DRAG DROP - (Topic 6)

A user attempts to view of vendors in Dynamics 365 Finance.

You collaborate with the user to access Dynamics 365 Finance. The user logs their device and credentials to show you the vendor list menu is missing. You log in an create a task recording on the user's device. The recording shows you accessing the menu. You then upload the recording.

You need to use the security diagnostics tool on your device to gran the user permissions. Which four actin should you perform in sequence? To answer, move the approve actions from the list of actions to the answer area and arrange them in the correct order.

Actions

View the objects where the Missing permissions field displays the value **Yes**.

Select **Open from this PC**.

Enter the user's device ID.

Select **Open from LCS**.

Add a reference to a role, duty, or privilege.

View the objects where the Missing permissions field displays the value **No**.

Enter the user's ID.

Answer area

>

<

- A. Mastered
- B. Not Mastered

Answer: A

Explanation:

- Select Open from LCS;
- Enter the user's ID;
- View the objects where the Missing permissions field displays the value Yes;
- Add a reference to a role, duty, or privilege.

<https://learn.microsoft.com/en-us/dynamics365/fin-ops-core/dev-itpro/sysadmin/tasks/security-diagnostics-task-recordings>

NEW QUESTION 285

HOTSPOT - (Topic 6)

You are a consultant and set up Dynamics 365 for Finance and Operations for local and multinational companies.

You need to establish policy rules for purchasing.

What policy frameworks should you implement for each scenario? To answer, the appropriate options in the answer area.

NOTE: Each correct selection is worth one point.

Scenario	Policy framework
A company is established in the US and Canada. Ensure that employees in the US and Canada buy from different catalogs and vendors.	<div><div></div><div>Purchasing policies are set up at the legal-entity level</div><div>Purchasing policies are set up at the organizational level</div></div>
For a large multinational company, ensure that department and global purchasing controls apply to sales users in the UK.	<div><div></div><div>Purchasing policies are set up at the legal-entity level</div><div>Purchasing policies are set up at the organizational level</div></div>
Ensure that a specific user can access only the Tools category when the user creates purchase requisitions.	<div><div></div><div>Catalog policy rule</div><div>Category policy rule</div><div>Category access policy rule</div></div>
Ensure that a specific user can access only a subset of vendors for the Tools category.	<div><div></div><div>Catalog policy rule</div><div>Category policy rule</div><div>Category access policy rule</div></div>

- A. Mastered
- B. Not Mastered

Answer: A

Explanation:

References:

<https://docs.microsoft.com/en-us/dynamics365/unified-operations/supply-chain/procurement/purchase-policies>

NEW QUESTION 290

DRAG DROP - (Topic 6)

A company implements finance and operations apps.

The company needs to implement master planning and budgeting. You need to recommend which apps the company should implement.

Which apps should you recommend? To answer, drag the appropriate apps to the correct capabilities. Each app may be used once, more than once, or not at all.

You may need to drag the split bar between panes or scroll to view content.

NOTE: Each correct selection is worth one point.

Apps

Dynamics 365 Supply Chain Management

Dynamics 365 Finance

Dynamics 365 Human Resources

Answer Area

Capability	App
Master planning	
Budgeting	

- A. Mastered

B. Not Mastered

Answer: A

Explanation:

Box 1: Dynamics 365 Supply Chain Management
Master planning in is in Dynamics 365 Supply Chain Management.
Master planning uses information from many different areas of the system to determine how much of each item you must purchase and by what date you must purchase the inventory (based on lead times in Dynamics 365 for Supply Chain Management) to fulfill the item requirements on time.
Box 2: Dynamics 365 Finance Budgeting is in Dynamics 365 Finance.

NEW QUESTION 295

DRAG DROP - (Topic 6)
You are configuring the address books for a company's accounts receivable, accounts payable, and retail operations.
You need to configure the appropriate address books to meet various requirements. Which address book should you use for each scenario? To answer, drag the appropriate address book objects to the correct scenarios. Each address book object may be used once, more than once, or not at all. You may need to drag the spit bar between panes or scroll to view content.
NOTE: Each correct selection is worth one point.

Address Book Object	Answer Area	Address Book Object
employee	Scenario	
global	Restrict account visibility for a given retail channel transaction.	Address Book Object
customer	Create an address for a vendor.	Address Book Object
contact	Link workers to retail locations.	Address Book Object
	Create an address for a prospect.	Address Book Object

- A. Mastered
- B. Not Mastered

Answer: A

Explanation:

Address Book Object	Answer Area	Address Book Object
employee	Scenario	
global	Restrict account visibility for a given retail channel transaction.	customer
customer	Create an address for a vendor.	global
contact	Link workers to retail locations.	employee
	Create an address for a prospect.	contact

NEW QUESTION 300

- (Topic 6)
A company implements Dynamics 365 for Finance and Operations.
You are the primary approver for purchase requisitions that are greater than \$500,000. You are going on vacation for two weeks.
You need to assign another user as the approver only for purchase requisitions greater than \$500,000.
What should you do?

- A. Under User Options, add a user and assign the scope of Module
- B. Under User Options, add a user and assign the scope of All
- C. Under User Options, add a user and assign the scope of Workflow

Answer: C

NEW QUESTION 303

- (Topic 6)
A company uses Dynamics 365 Supply Chain Management. You plan to create four model- driven apps to add additional capabilities.
You need to ensure that the apps can consume, share, and modify the same data. What should you use?

- A. Lifecycle Services
- B. Master Data Services
- C. Common Data Service
- D. Power BI Service

Answer: C

Explanation:
Reference:
<https://docs.microsoft.com/en-us/powerapps/maker/data-platform/data-platform-intro>

NEW QUESTION 304

HOTSPOT - (Topic 6)
You want to enhance usability in the Dynamics 365 for Finance and Operations deployment for your organization. Your environment has been configured using default components. You set up filters on the channel deployment workspace. You need to use the correct UI filter.
Which UI filter should you use? To answer, select the appropriate options in the answer area.
NOTE: Each correct selection is worth one point.

Desired result	UI filter
Filter retail stores by region from an all up workspace	<div><div></div><div>Workspace filter Section filter Grid column filter</div></div>
Look for stores in Illinois from a view of stores	<div><div></div><div>Workspace filter Section filter Grid column filter</div></div>

- A. Mastered
- B. Not Mastered

Answer: A

Explanation:
References:
<https://docs.microsoft.com/en-us/dynamics365/unified-operations/fin-and-ops/get-started/configure-filter-workspaces>

NEW QUESTION 307

- (Topic 6)
You are a Dynamics 365 Finance system administrator. Users report that purchase order numbers are being generated in a non-continuous configuration during bulk purchase order creation. You need to determine how to improve performance.
Solution: Enable Preallocation for the purchase order number sequence. Does the solution meet the goal?

- A. Yes
- B. No

Answer: A

Explanation:
Reference:
<https://www.dynamics-tips.com/organization-administration/number-sequences-explained>

NEW QUESTION 312

HOTSPOT - (Topic 6)
A company that has two legal entities is implementing Dynamics 365 finance. You need to ensure that the company can view the following business information:
• Information about the user that posts a journal transaction.
• Intercompany transaction between the two legal entities.
Which features should you implement? To answer, select the appropriate options in the NOTE: Each correct selection is worth one point.

Business information	Feature
Information about the user that posts a journal transaction.	<div><div>Audit trail Audit bench Users Voucher transactions</div></div>
Intercompany transactions between the two legal entities.	<div><div>Accounting source explorer Original document Related vouchers</div></div>
Intercompany transactions between the two legal entities.	<div><div>Accounting source explorer Original document Related vouchers</div></div>

- A. Mastered
- B. Not Mastered

Answer: A

Explanation:
Answer Area



NEW QUESTION 316

SIMULATION - (Topic 6)

You are a functional consultant for Contoso Entertainment System USA (USMF).
You need to ensure that when automated emails are sent by the Finance and Operations system, the emails are sent in bulk every five minutes.
To complete this task, sign in to the Dynamics 365 portal.

- A. Mastered
- B. Not Mastered

Answer: A

Explanation:

- ? Go to System administration > Periodic tasks > Email processing > Email distributor batch.
- ? Enable the Batch processing option.
- ? Ensure No end date is selected.
- ? Configure the frequency to 5 minutes.
- ? Save the changes.

NEW QUESTION 318

SIMULATION - (Topic 6)

You are a functional consultant for Contoso Entertainment System USA (USMF).
You need to export a list of all the contacts of USMF to an XLS file. The file must be saved to the Downloads folder.
To complete this task, sign in to the Dynamics 365 portal.

- A. Mastered
- B. Not Mastered

Answer: A

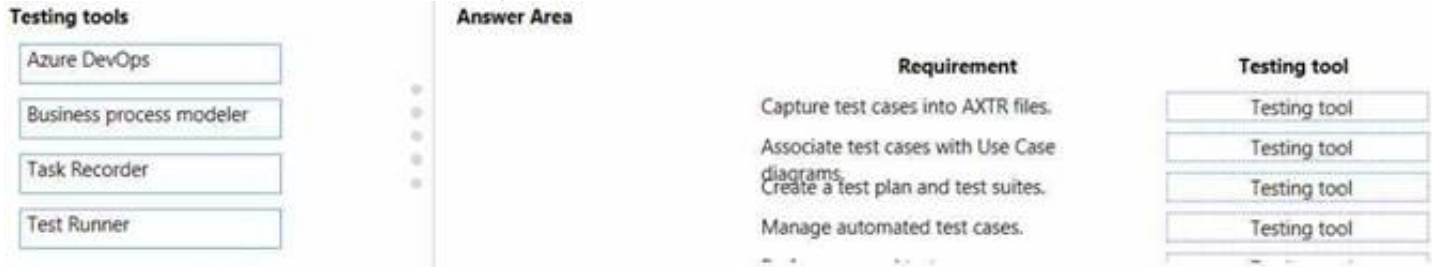
Explanation:

- ? Navigate to System Administration > Workspaces > Data management.
- ? Click the Framework parameters tile.
- ? In the Shared working directory field, enter C:\users\public\documents\ then click Validate.
- ? Click the Export tile.
- ? In the Name field, enter a name for the export job.
- ? In the Entity Name field, select the Contact entity.
- ? Click on Add entity.
- ? In the Target data format field, select EXCEL.
- ? Set the Skip staging option to No.
- ? Click the Add button.
- ? Click Export to begin the export.
- ? Click on Download package.
- ? Select the Downloads folder as the location to save the downloaded file.

NEW QUESTION 322

DRAG DROP - (Topic 6)

You are implementing Dynamics 365 Finance.
You use Business process modeler to capture the business process. You integrate Lifecycle Services with Task Recorder, Microsoft Azure DevOps, and Test Runner to perform end-to-end testing of new features.
You need to perform testing.
Which testing tools should you use? To answer, drag the appropriate testing tools to the correct requirements. Each testing tool may be used once, more than once, or not at all. You may need to drag the split bar between panes or scroll to view content.



- A. Mastered
- B. Not Mastered

Answer: A

Explanation:

Testing tools

Azure DevOps

Business process modeler

Task Recorder

Test Runner

Answer Area

Requirement

Capture test cases into AXTR files.
Associate test cases with Use Case diagrams.
Create a test plan and test suites.
Manage automated test cases.

Testing tool

Task Recorder

Business process modeler

Azure DevOps

Azure DevOps

Test Runner

NEW QUESTION 325

DRAG DROP - (Topic 6)

A company implements Dynamics 365 Commerce. An employee must be able to do the following: Perform cash- and-carry transactions.

Read customer- submitted product reviews. Create a continuity order.

You need to select the application to use for each role.

Which application should you select for the roles? To answer, drag the appropriate application to the correct roles. Each application may the used once, more than once, or not at all. You may need to drag bar between panes or scroll to view content.

NOTE: Each correct selection is worth one point.

Applications

Dynamics 365 headquarters

Point-of-sale

E-commerce

Answer Area

Role

Perform cash-and-carry transactions.
Read customer-submitted product reviews.
Create a continuity order.

Application

Application

Application

Application

- A. Mastered
- B. Not Mastered

Answer: A

Explanation:

Applications

Dynamics 365 headquarters

Point-of-sale

E-commerce

Answer Area

Role

Perform cash-and-carry transactions.
Read customer-submitted product reviews.
Create a continuity order.

Application

Point-of-sale

Dynamics 365 headquarters

E-commerce

NEW QUESTION 326

- (Topic 6)

A company uses Dynamics 365 Supply Chain Management. The company has two legal entities, one in the United States and one in Canada.

The Canada entity has a vendor that the US entity wants to order from directly. The US entity requires access to the vendor sales representative information for order placement

You need to resolve the US access requirement. What should you do?

- A. Associate the global address book party to the US company.
- B. Create an intercompany relationship.
- C. Create a new address book.
- D. Set the secure by address book parameter.

Answer: B

NEW QUESTION 329

- (Topic 6)

You are a Dynamics 365 for Finance and Operations system administrator.

A user is reporting an issue with the Sales Order form. The UI for the form is not loading properly, and there

are some performance issues. The object was working fine until the most recent update release. The user has personalized this form, is using Microsoft Internet Explorer 11, and no other users and reporting issues.

You need to resolve the issue. What should you do?

- A. Export, delete, then reimport the usage data for the sales form object.
- B. Disable and then re-enable the user.
- C. Reset all the usage data for the user.
- D. Reimport and compile the AOT object causing issues.

Answer: C

NEW QUESTION 330

DRAG DROP - (Topic 6)

A company needs test scripts that can be leveraged by the Regression Suite Automated Testing (RSAT) tool. Several users are creating their test cases and sending the files to you to upload.

You need to create these scripts and link them to the RSAT tool.

Which three actions should you perform in sequence? To answer, move the appropriate actions from the list of actions to the answer area and arrange them in the correct order.

Actions

Answer Area

Create a BPM library and upload XML task recorder files.

Create a BPM library and upload AXTR task recorder files.

Create test suite scripts in Microsoft Azure DevOps.

Sync to Microsoft Azure DevOps.



- A. Mastered
- B. Not Mastered

Answer: A

Explanation:

References:

<https://docs.microsoft.com/en-us/dynamics365/fin-ops-core/dev-itpro/lifecycle-services/using-task-guides-and-bpm-to-create-user-acceptance-tests>

<https://docs.microsoft.com/en-us/dynamics365/fin-ops-core/fin-ops/get-started/hol-set-up-regression-suite-automation-tool>

NEW QUESTION 332

SIMULATION - (Topic 6)

You are a functional consultant for Contoso Entertainment System USA (USMF). You recently configured all the sales taxes of USMF.

You need to validate the sales taxes by creating a sales order. The sales order must contain the following information:

? Customer: Contoso Retail Los Angeles

? Product: T0001

? Quantity: 1

? Size: 10

To validate your result, create a proforma invoice for the sales order and save the invoice in Microsoft Excel format to the Downloads\Sales folder.

To complete this task, sign in to the Dynamics 365 portal.

- A. Mastered
- B. Not Mastered

Answer: A

Explanation:

You need to create a sales order then create a proforma invoice for the sales order.

Create the sales order:

? Go to Navigation pane > Modules > Accounts Receivable > Sales orders > All sales orders.

? Select New.

? In the Customer account field, select the drop-down button to open the lookup.

? In the list, find and select the customer record for Contoso Retail Los Angeles.

? Select OK.

? Under the Sales order lines section, select the Sales order line.

? In the Item number field, select the drop-down button to open the lookup.

? Select item T0001.

? If the Size dimension is not displayed, click on Sales order line > Display > Dimensions.

? Select the Size dimension.

? Click OK.

? In the Size field, select the drop-down button to open the lookup.

? Select Size 10.

? In the Quantity field, enter 1.

? Click on the Sell tab.

? Under Generate, select Confirm sales order.

? Click OK.

Create the proforma invoice:

? On the sales order page, click on the Invoice tab.

? Under Generate, select Pro forma invoice.

? Set the Print invoice option to Yes.

? Click OK.

? Click on Export.

? Save the invoice in Microsoft Excel format to the Downloads\Sales folder

NEW QUESTION 336

- (Topic 6)

You implement Dynamics 365 for Finance and Operations. The implementation will undergo User Acceptance Testing (UAT). You create test case recordings. To coordinate testing across multiple environments, UAT must be integrated with Microsoft Azure DevOps. You need to configure Business process modeler (BPM) and Azure DevOps to complete user acceptance testing. Which three actions should you perform? Each correct answer presents a complete solution. NOTE: Each correct selection is worth one point.

- A. Synchronize the BPM library with Azure DevOps
- B. Create a test pass and test case in Azure DevOps
- C. Upload saved Task recorder files to BPM
- D. Create a test plan and test suites in Azure DevOps
- E. Synchronize the BPM library with a Git repo
- F. Upload saved Task recorder files to Azure DevOps

Answer: ACD

Explanation:

References:
<https://docs.microsoft.com/en-us/dynamics365/unified-operations/dev-itpro/lifecycle-services/using-taskguides-and-bpm-to-create-user-acceptance-tests>

NEW QUESTION 341

DRAG DROP - (Topic 6)
You manage a Dynamics 365 Finance environment. You create a new Microsoft Azure SQL Database instance. You need to copy data from specific Dynamics 365 entities to the new database instance. Which three actions should you perform in sequence before creating a data project? To answer, move three actions from the list of actions to the answer area and arrange them in the correct order.

Actions

Disable the Run business validation option from the data entities.

In Data management, open Configure entity export to database

Enable set-based processing for the data entities.

Select the connection string of the Azure SQL database.

Publish the data entities to be exported.

>

<

Answer Area

↑

↓

- A. Mastered
- B. Not Mastered

Answer: A

Explanation:

Actions

Disable the Run business validation option from the data entities.

In Data management, open Configure entity export to database

Enable set-based processing for the data entities.

Select the connection string of the Azure SQL database.

Publish the data entities to be exported.

>

<

Answer Area

In Data management, open Configure entity export to database

Select the connection string of the Azure SQL database.

Publish the data entities to be exported.

NEW QUESTION 345

- (Topic 6)
Note: This question is part of a series of questions that present the same scenario. Each question in the series contains a unique solution that might meet the stated goals. Some question sets might have more than one correct solution, while others might not have a correct solution.

After you answer a question in this section, you will NOT be able to return to it. As a result, these questions will not appear in the review screen.
 You have the following Dynamics 365 Finance instances:

Instance	Comments
1	Contains configuration data for a company named CompanyA
2	Contains a blank setup for a company named CompanyB

You must copy the configuration data from CompanyA to CompanyB. Solution: Use the Move Database option in Lifecycle Services.
 Does the solution meet the goal?

- A. Yes
- B. No

Answer: B

Explanation:

Reference:

<https://docs.microsoft.com/en-us/dynamics365/fin-ops-core/dev-itpro/data-entities/copy-configuration>

NEW QUESTION 348

- (Topic 6)

Note: This question is part of a series of questions that present the same scenario. Each question in the series contains a unique solution that might meet the stated goals. Some question sets might have more than one correct solution, while others might not have a correct solution.

After you answer a question in this section, you will NOT be able to return to it. As a result, these questions will not appear in the review screen.

You are developing a file-based integration to Dynamics 365 Finance.

Microsoft Excel files with 15,000 or more records need to be imported into the system periodically by individual users. The records need to be imported in full within a 5-minute approved window.

You need to determine how to accomplish the import into the system. Solution: Import the data by using the Application Integration Framework. Does the solution meet the goal?

- A. Yes
- B. No

Answer: B

NEW QUESTION 350

DRAG DROP - (Topic 6)

A company is implementing Dynamics 365 Finance.

The company hires a new accounting team member. The team member will be responsible for generating deposit slips and cancelling payments. The team member must be able to view the Positive Pay report.

You need to configure security for the new team member.

Which security components should you use? To answer, drag the appropriate components to the correct requirements. Each component may be used once, more than once, or not at all. You may need to drag the split bar between panes or scroll to view content.

NOTE: Each correct selection is worth one point.

Components	Requirement	Component
Role	Provide the new team member access.	
Duty	Generate deposit slips and cancel payments.	
Privilege	View the Positive Pay report.	
Permissions		

- A. Mastered
- B. Not Mastered

Answer: A

Explanation:

Components	Requirement	Component
Role	Provide the new team member access.	Role
Duty	Generate deposit slips and cancel payments.	Duty
Privilege	View the Positive Pay report.	Privilege
Permissions		

NEW QUESTION 352

FILL IN THE BLANK - (Topic 6)

Note: This question is part of a series of questions that present the same scenario. Each question in the series contains a unique solution. Determine whether the solution meets the stated goals. Some question sets might have more than one correct solution, while others might not have a correct solution.

After you answer a question in this section, you will NOT be able to return to it. As a result, these questions will not appear in the review screen.

A company is implementing Dynamics 365 Finance. The company has two legal entities in two different regions requiring separate tenants. CompanyA and CompanyB are both implementing Dynamics 365 Finance as separate implementation teams in a staggered approach.

CompanyA and CompanyB want to ensure that assets are accessible across the companies and to Microsoft but will not be publicly accessible to other companies.

You need to determine how to set up and configure assets to the Lifecycle Services (LCS) Asset library.

Solution: Create a shared asset library in LCS. Does the solution meet the goal?

- A. Yes
- B. No

Answer: A

NEW QUESTION 355

HOTSPOT - (Topic 6)

A company is deploying a second instance of Dynamics 365 Finance.

You export configuration and setup data from the existing instance. You observe the following issues:

When you export the account structures from the existing instance, only two of five account structures export.

When you import the workflow entity into the new instances, an error occurs. You need to fix the export and import issues.

How should you fix the issues? To answer, select the appropriate options in the answer area.

Answer Area

Error	Action
Account structures	<input type="checkbox"/> Activate the account structures. <input type="checkbox"/> Activate the chart of accounts. <input type="checkbox"/> Reimport the account structures. <input type="checkbox"/> Reimport the chart of accounts.
Workflow error	<input type="checkbox"/> Adjust the version number of the workflow. <input type="checkbox"/> Change the workflow owner to admin prior to export. <input type="checkbox"/> Change the workflow owner to admin prior to import. <input type="checkbox"/> Set the workflow status to Draft before export.

- A. Mastered
- B. Not Mastered

Answer: A

Explanation:

Answer Area

Error	Action
Account structures	<input type="checkbox"/> Activate the account structures. <input type="checkbox"/> Activate the chart of accounts. <input type="checkbox"/> Reimport the account structures. <input type="checkbox"/> Reimport the chart of accounts.
Workflow error	<input type="checkbox"/> Adjust the version number of the workflow. <input type="checkbox"/> Change the workflow owner to admin prior to export. <input type="checkbox"/> Change the workflow owner to admin prior to import. <input type="checkbox"/> Set the workflow status to Draft before export.

NEW QUESTION 358

- (Topic 6)

You manage a Dynamics 365 for Finance and Operations environment. Users report slow queries, deadlocks, and crashes. You need identify which tool to use to troubleshoot. What should you use?

- A. System diagnostics
- B. Environment monitoring
- C. DirectQuery
- D. Microsoft Azure Active Directory Connect Health Agent

Answer: B

Explanation:

Reference:

<https://blogs.msdn.microsoft.com/axsa/2018/06/05/how-to-use-environment-monitoring-view-raw-logs/>

NEW QUESTION 362

SIMULATION - (Topic 6)

You are a functional consultant for Contoso Entertainment System USA (USMF).

You need to ensure that a user named Alicia receives an alert notification each time a new release product is added from the product master list. The alert must contain the word Products.

To complete this task, sign in to the Dynamics 365 portal.

- A. Mastered
- B. Not Mastered

Answer: A

Explanation:

- ? Open the page that contains the data to monitor (Released Products)
- ? On the Action Pane, on the Options tab, in the Share group, select Create alert rule.
- ? In the Create alert rule dialog box, on the Alert me when FastTab, in the Event field, select Record has been created.
- ? On the Alert me for FastTab, select the desired option. If you want to send the alert as a business event, ensure that Organization-wide is set to No.
- ? On the Alert me with FastTab, in the Subject field, enter an appropriate subject (The word Products should be included in the Subject or Message text for this question).
- ? In the Message field, enter an optional message. The text is used as the message that you receive when an alert is triggered.
- ? Select OK to save the settings and create the alert rule.

NEW QUESTION 367

- (Topic 6)

You develop a Power Apps app that allows users to upload images. The app automatically resizes images and adds metadata tags to uploaded images. The app must automatically tag images of checks within Dynamics 365 Finance. You must enable access to the Power App from Finance and pass a variable to indicate context to the app. Pop-up blockers are enabled on all user devices. You need to configure the app. What are two possible ways to achieve the goal? Each correct answer presents a complete solution. NOTE: Each correct selection is worth one point.

- A. Add the app by using the Power Apps button on the standard Action pane.
- B. Use JavaScript to open a modeless dialo
- C. Pass the context with a querystring value.
- D. Use JavaScript to open a new modal dialo
- E. Pass the context with a querystring value.
- F. Embed the app on a page as a FastTab.
- G. Create a Power Automate flow that sends an email with a link to open the app.

Answer: AD

Explanation:

Reference:
<https://docs.microsoft.com/en-us/dynamics365/fin-ops-core/fin-ops/get-started/embed-power-apps?toc=/dynamics365/commerce/toc.json>

NEW QUESTION 372

- (Topic 6)

Note: This question is part of a series of questions that present the same scenario. Each question in the series contains a unique solution that might meet the stated goals. Some question sets might have more than one correct solution, while others might not have a correct solution. After you answer a question in this section, you will NOT be able to return to it. As a result, these questions will not appear in the review screen. You are developing a file-based integration to Dynamics 365 for Finance and Operations. Microsoft Excel files with 15,000 or more records need to be imported into the system periodically by individual users. The records need to be imported in full within a 5-minute approved window. You need to determine how to accomplish the import into the system. Solution: Import the data by using the Data Management Framework's package API. Does the solution meet the goal?

- A. Yes
- B. No

Answer: B

Explanation:

References:
<https://docs.microsoft.com/en-us/dynamics365/fin-ops-core/dev-itpro/data-entities/integration-overview>
<https://docs.microsoft.com/en-us/dynamics365/fin-ops-core/dev-itpro/data-entities/data-management-api>

NEW QUESTION 374

HOTSPOT - (Topic 6)

You set up a new instance of Dynamics 365 for Finance and Operations. Your company sells widgets in cases of 12 units and pallets of 144 cases. You need to establish the units of measure. Which parameter is used to detail the units of measure? To answer, select the detail to match the parameter in the answer area. NOTE: Each correct selection is worth one point.

Parameter	Detail
Unit class	<div>Quantity</div> <div>Mass</div> <div>Area</div>
From unit in widgets-per-case conversion	<div>Unit</div> <div>Case</div> <div>Pallet</div> <div>Widgets</div>
To unit in cases-per-pallet conversion	<div>Unit</div> <div>Case</div> <div>Pallet</div> <div>Widgets</div>

- A. Mastered
- B. Not Mastered

Answer: A

Explanation:

References:
<https://docs.microsoft.com/en-us/dynamicsax-2012/unit-conversions-form?redirectedfrom=MSDN>

NEW QUESTION 377

- (Topic 6)
You are the administrator of a Dynamic 365 Finance system.
Messages sent from the system exceed the sending limits of the Microsoft 365 Exchange Online service.
You need to prevent sending limits from being exceeded. What should you configure?

- A. Attachment size limits
- B. Email throttling
- C. Email distributor batch job
- D. Throttling priority mappings

Answer: B

Explanation:

The email throttling feature allows noninteractive email providers to adhere to a per-minute email sending limit, which prevents errors that are currently triggered when the system attempts to send more emails than the provider can handle. When email throttling is enabled, sending limits for Microsoft 365 email providers will be set automatically; manual configuration is required for all other email providers.
Reference: <https://docs.microsoft.com/en-us/dynamics365-release-plan/2020wave2/finance-operations/finance-operations-crossapp-capabilities/email-throttling>

NEW QUESTION 380

- (Topic 5)
Which two features should you use to meet the customer exchange requirements? Each correct answer presents part of the solution.
NOTE: Each correct selection is worth one point.

- A. Case management
- B. Customer credit
- C. Document handling
- D. Quality order
- E. Quarantine order

Answer: AC

Explanation:

<https://docs.microsoft.com/en-us/learn/modules/managing-cases-with-dynamics-365/1-case-management-overview>
<https://docs.microsoft.com/en-us/dynamicsax-2012/appuser-itpro/configure-document-management>

NEW QUESTION 381

HOTSPOT - (Topic 4)
You need to design the street team mobile application for creating sales orders in the mobile application.
Which technologies should you use? To answer, select the appropriate options in the answer area.
NOTE: Each correct selection is worth one point.

Requirement	Technology
Store product information for use in the mobile application.	<div><div></div><div>Common Data Service</div><div>Dynamics 365 Supply Chain Management</div><div>Mobile App SQL lite database</div><div>Power Apps</div></div>
Integrate sales orders from the mobile app to Dynamics 365.	<div><div></div><div>Common Data Service</div><div>Dual-write</div><div>Virtual Entities</div><div>Data Integration APIs</div></div>

- A. Mastered
- B. Not Mastered

Answer: A

Explanation:

Requirement	Technology
Store product information for use in the mobile application.	<div><div></div><div>Common Data Service</div><div>Dynamics 365 Supply Chain Management</div><div>Mobile App SQL lite database</div><div>Power Apps</div></div>
Integrate sales orders from the mobile app to Dynamics 365.	<div><div></div><div>Common Data Service</div><div>Dual-write</div><div>Virtual Entities</div><div>Data Integration APIs</div></div>

NEW QUESTION 383

DRAG DROP - (Topic 4)

You need to implement commission restrictions.

What should you use to meet each requirement? To answer, drag the appropriate components to the correct requirements. Each component may be used once, more than once, or not at all. You may need to drag the split bar between panes or scroll to view content.

NOTE: Each correct selection is worth one point.

Components	Requirement	Component
Permissions	Restrict commissions functionality based on requirements.	<div></div>
Privileges		
Duties	Assign the restrictions to affect system functionality for the sales representatives.	<div></div>
Security policies		

- A. Mastered
- B. Not Mastered

Answer: A

Explanation:

Components	Requirement	Component
Permissions	Restrict commissions functionality based on requirements.	Security policies
Privileges		
Duties	Assign the restrictions to affect system functionality for the sales representatives.	Permissions
Security policies		

NEW QUESTION 387

- (Topic 4)

You need to load the data for the environment refresh activities. Which location should you use?

- A. Microsoft SharePoint
- B. Microsoft Azure Data Lake
- C. Dynamics 365
- D. Microsoft Azure DevOps
- E. Project-level asset library

Answer: C

Explanation:

Reference:

<https://docs.microsoft.com/en-us/dynamics365/fin-ops-core/dev-itpro/data-entities/data-entities-data-packages>

NEW QUESTION 389

- (Topic 3)

You need to troubleshoot the source of and reason for the errors reported by the sales representatives. Which tool should you use?

- A. Alert Service
- B. System diagnostics
- C. Environment History
- D. Microsoft Azure Virtual Machine
- E. Azure Monitor

Answer: C

NEW QUESTION 391

- (Topic 3)

You need to troubleshoot the source of and reason for the errors reported by the sales representative. Which tool should you use?

- A. Alert Service
- B. System diagnostics
- C. Environment History
- D. Azure Monitor
- E. Microsoft Azure Virtual Machine

Answer: C

NEW QUESTION 396

HOTSPOT - (Topic 3)

You need to resolve the sales representatives' report data issue.

What should you do? To answer, select the appropriate options in the answer area. NOTE: Each correct selection is worth one point.

Inquiry

Action

How to resolve the issue

▼
Delete the usage data for all of the users.
Remove the Report Selections data for the users.
Remove the saved queries for the users.
Delete then add the users back into the system.

Where to find the issue

▼
Navigate to the Usage Data for each user.
Navigate to the SSRS report query object in Visual Studio.
Navigate to the report filter criteria.
Navigate the system-level personalization from for each user.

- A. Mastered
- B. Not Mastered

Answer: A

Explanation:

Inquiry

Action

How to resolve the issue

▼
Delete the usage data for all of the users.
Remove the Report Selections data for the users.
Remove the saved queries for the users.
Delete then add the users back into the system.

Where to find the issue

▼
Navigate to the Usage Data for each user.
Navigate to the SSRS report query object in Visual Studio.
Navigate to the report filter criteria.
Navigate the system-level personalization from for each user.

NEW QUESTION 399

- (Topic 3)

You need to resolve the form personalization issues. What should you do?

- A. Clear the sales associate users' browser cache and site settings for the Dynamics 365 instance.
- B. Disable and then re-enable the sales associate users.
- C. Clear the personalization for each form.
- D. Reset all usage data.
- E. Redeploy the form.

Answer: C

NEW QUESTION 404

HOTSPOT - (Topic 2)

You need to resolve issues with the default Excel templates.

What should you do? To answer, select the appropriate options in the answer area. NOTE Each correct selection is worth one point.

Answer Area

Requirement	Option
Configure a usable Excel template from the sales order form.	<div>Update the existing Customer form document template.</div> <div>Upload a modified document template.</div> <div>Delete and replace the existing base document template.</div> <div>Create a new Customer entity for the form.</div>
Assign the document template.	<div>Customer Entity for the form</div> <div>Customer Form</div> <div>Customer template for the form</div>

- A. Mastered
- B. Not Mastered

Answer: A

Explanation:

Answer Area

Requirement	Option
Configure a usable Excel template from the sales order form.	<div>Update the existing Customer form document template.</div> <div>Upload a modified document template.</div> <div>Delete and replace the existing base document template.</div> <div>Create a new Customer entity for the form.</div>
Assign the document template.	<div>Customer Entity for the form</div> <div>Customer Form</div> <div>Customer template for the form</div>

NEW QUESTION 406

- (Topic 2)

You need to configure the system to meet the data import, export, and operations requirements.

Which two options should you implement? Each correct answer presents part of the solution.

NOTE: Each correct selection is worth one point.

- A. Document templates
- B. Electronic reporting
- C. REST APIs
- D. Excel Add-in data source
- E. Application Integration Framework

Answer: AD

NEW QUESTION 411

HOTSPOT - (Topic 2)

You need to identify the platform version that Liberty's live instance uses as well as the update version they must use if they continue to delay updates due to reported issues.

Which answers should you give? To answer, select the appropriate options in the answer area.

NOTE: Each correct selection is worth one point.

Request

Answer

Platform version for Liberty’s live instance

	▼
Update 23	
10.0.5	
Dynamics 365	
Dynamics AX	

Application version that can no longer be delayed

	▼
10.0.8	
Update 34	
10.0.10	
Update 32	

- A. Mastered
- B. Not Mastered

Answer: A

Explanation:

Request

Answer

Platform version for Liberty’s live instance

	▼
Update 23	
10.0.5	
Dynamics 365	
Dynamics AX	

Application version that can no longer be delayed

	▼
10.0.8	
Update 34	
10.0.10	
Update 32	

NEW QUESTION 416
.....

Thank You for Trying Our Product

We offer two products:

1st - We have Practice Tests Software with Actual Exam Questions

2nd - Questons and Answers in PDF Format

mb-300 Practice Exam Features:

- * mb-300 Questions and Answers Updated Frequently
- * mb-300 Practice Questions Verified by Expert Senior Certified Staff
- * mb-300 Most Realistic Questions that Guarantee you a Pass on Your FirstTry
- * mb-300 Practice Test Questions in Multiple Choice Formats and Updatesfor 1 Year

100% Actual & Verified — Instant Download, Please Click
[Order The mb-300 Practice Test Here](#)