



Cisco

Exam Questions 200-901

Developing Applications and Automating Workflows using Cisco Core Platforms (DEVASC)

About ExamBible

[Your Partner of IT Exam](#)

Found in 1998

ExamBible is a company specialized on providing high quality IT exam practice study materials, especially Cisco CCNA, CCDA, CCNP, CCIE, Checkpoint CCSE, CompTIA A+, Network+ certification practice exams and so on. We guarantee that the candidates will not only pass any IT exam at the first attempt but also get profound understanding about the certificates they have got. There are so many alike companies in this industry, however, ExamBible has its unique advantages that other companies could not achieve.

Our Advances

* 99.9% Uptime

All examinations will be up to date.

* 24/7 Quality Support

We will provide service round the clock.

* 100% Pass Rate

Our guarantee that you will pass the exam.

* Unique Gurantee

If you do not pass the exam at the first time, we will not only arrange FULL REFUND for you, but also provide you another exam of your claim, ABSOLUTELY FREE!

NEW QUESTION 1

- (Exam Topic 2)
Into which type of Python data structure should common data formats be parsed?

- A. sequence
- B. set
- C. dictionary
- D. list

Answer: C

NEW QUESTION 2

- (Exam Topic 2)
Refer to the exhibit.

```
import requests
from requests.auth import HTTPBasicAuth
headers = {'Content-Type': 'application/json'}
base_url = 'https://10.1.2.3'
auth_url = '/dna/system/api/v1/auth/token'
devices_url = '/dna/intent/api/v1/network-device'

token = requests.post(
    base_url + auth_url, headers=headers,
    auth=HTTPBasicAuth(username="admin", password="DevNet123"))
data = token.json()

query_string_params = {'platformId': 'C9500-40X'}
response = requests.get(
    base_url + devices_url, headers=headers,
    params=query_string_params)
print(f'{response.code}')
```

A network engineer must manage the network devices. The engineer prepares a Python scripts to authenticate to the Cisco to DNA Center API and request a device list. The device request fails and returns errors code 401. Which action solves the problem?

- A. Update the API UR
- B. which matched the API endpoint for device list.
- C. Send the request to another network in case there are reachability Issues.
- D. Send the Authentication header In the request with a valid configuration.
- E. Update the credentials that are already supplied and retry the request

Answer: D

NEW QUESTION 3

- (Exam Topic 2)
Drag and drop the types of management from the left onto the levels at which they are performed on the right.

user and programmability interaction through the use of lower level APIs

user and programmability interaction through the use of Northbound APIs

iterate over a list of devices

configure features with YANG models

Controller level

Device level

- A. Mastered
- B. Not Mastered

Answer: A

Explanation:
Graphical user interface, application Description automatically generated with medium confidence

NEW QUESTION 4

- (Exam Topic 2)
Which application should be used to externally access all applications deployed in the same host machine with a single public IP address and port, when each application listens on different local ports?

- A. reverse proxy
- B. load balancer
- C. DNS
- D. firewall

Answer: D

NEW QUESTION 5
- (Exam Topic 2)

Devices

Get Device Count

Operation Id: *getDeviceCount*

Description: *Returns the count of network devices based on the filter criteria by management IP address, mac address, hostname and location name*

GET

/dna/intent/api/v1/network-device/count

Request Parameters

Responses

Status: 200

The request was successful. The result is contained in the response body.

Schema Definition

Example Body

[-]

CountResult

response: integer

version: string

+ -

Refer to the exhibit. Drag and drop the code snippets from the bottom onto the blanks in the code to construct a request to find the Cisco DNA Center switch count. Not all options are used.

```
curl -L --request [ ] \  
-- [ ] https:///dna/intent/api/v1/network-device/ [ ] \  
\ --header ' [ ] : application/json' \  
--header 'Accept: application/json'
```

- | | | |
|------|---------|--------------|
| url | network | count |
| POST | GET | Content-Type |

- A. Mastered
- B. Not Mastered

Answer: A

Explanation:

```
curl -L --request GET \
--url https://dna/intent/api/v1/network-device/ count \
--header 'Content-Type: application/json' \
--header 'Accept: application/json'
```

url	network	count
POST	GET	Content-Type

NEW QUESTION 6

- (Exam Topic 2)

Drag and drop the code from the bottom onto the box where the code is missing in the Python script to complete a function to return all the clients on a network by using the Cisco Meraki Dashboard API. Not all options are used.

```
import requests
import json
url = 'https://dashboard.meraki.com/api/v0/'
headers = {' ': '0110c4e1b8a1',
           'Content-Type': ' '}
orgs = json.loads(requests.get(url+'organizations', headers=headers).text)

for org in orgs:
    nets = json.loads(requests.get(url+'organizations/'+org['id']+'/networks',
    headers=headers).text)
    for net in nets:
        clients = json.loads(requests.get(
            url+ ' /'+net['id']+' / ',
            headers=headers).text)
        for client in clients:
            print(client['ip'])
```

client	application/json
application/xml	clients
X-Cisco-Meraki-API-Key	networks
Authorization: Bearer	

- A. Mastered
- B. Not Mastered

Answer: A

Explanation:

```
import requests
import json
url = 'https://dashboard.meraki.com/api/v0/'
headers = {'X-Cisco-Meraki-API-Key': '0110c4e1b8a1',
           'Content-Type': 'application/json '}
orgs = json.loads(requests.get(url+'organizations', headers=headers).text)

for org in orgs:
    nets = json.loads(requests.get(url+'organizations/'+org['id']+'/networks',
    headers=headers).text)
    for net in nets:
        clients = json.loads(requests.get(
            url+ 'clients /'+net['id']+' networks ',
            headers=headers).text)
        for client in clients:
            print(client['ip'])
```

client	
application/xml	
Authorization: Bearer	

NEW QUESTION 7

- (Exam Topic 2)

A developer has created a new image to use in a Docker build and has added a tag for the image by using the command:

```
$ docker tag 84fe411926287 local/app:0.4
```

Which command must be executed next to build the Docker image using the tag?

- A. \$ docker build -p local/app:0.4
- B. \$ docker run -t local/app:0.4
- C. \$ docker run -p local/app:0.4
- D. \$ docker build -t local/app:0.4

Answer: D

NEW QUESTION 8

- (Exam Topic 2)

Refer to the exhibit.

```
1  - hosts: servers
2    tasks:
3
4      - name: task1
5        systemd:
6          name: webexbot
7          state: stopped
8
9      - name: task2
10       apt:
11         name: teamsbot
12
13     - name: task3
14       apt:
15         name: webexbot
16         state: absent
17         purge: yes
```

A developer must integrate a bot with an internal communication app. The developer wants to replace the webexbot package with the teamsbot package by using Ansible and prepares a playbook. In the first two tasks, the playbook stops the webexbot and verifies that the teamsbot is installed. What is accomplished in the last task of the workflow when the developer runs the Ansible playbook?

- A. stops the webexbot service and uninstalls it and retains its configuration files
- B. installs the webexbot and retains the configuration files
- C. uninstalls the webexbot package and removes its configuration files
- D. searches whether the purge package is available in the repository and uninstalls the webexbot package

Answer: C

NEW QUESTION 9

- (Exam Topic 2)

Access to the management interface of devices must be restricted by using SSH and HTTPS. Which two ports must be included in the ACLs for the protocols to work? (Choose two.)

- A. 22
- B. 23
- C. 80
- D. 443
- E. 880

Answer: AD

NEW QUESTION 10

- (Exam Topic 2)

A company wants to accelerate the adoption of technologies that will simplify its operations. Staff have different skill levels and are looking for a single site to find easy-to-consume beginner, intermediate, and advanced multidomain use cases. Which site should be used?

- A. DevNet Ecosystem Exchange
- B. DevNet Automation Exchange
- C. DevNet Creations
- D. DevNet Support Forum

Answer: D

NEW QUESTION 10

- (Exam Topic 2)

What are two properties of private IP addresses? (Choose two.)

- A. They can be used to access the Internet directly.
- B. They are more secure than public IP addresses.
- C. They are not globally unique.
- D. They can be repeated within the same local network.
- E. They are controlled globally by an IP address registry.

Answer: BD

NEW QUESTION 15

- (Exam Topic 2)

Refer to the exhibit.

API v1 documentation:

Authentication and authorization: Bearer Token

Inventory endpoint: /api/v1/inventory

Method: GET

Response formats: text/html, application/json,
application/html

Token:

dXNlcm5hbWU6cGFzc3dvcmQ=

Api call:

GET /api/v1/inventory HTTP/1.1

Host: example.com

Response:

HTTP/1.1 401 Unauthorized

An API call is constructed to retrieve the inventory in XML format by using the API. The response to the call is 401 Unauthorized. Which two headers must be added to the API call? (Choose two.)

- ☐ Accept: application/xml
- ☐ Content-Type: application/xml
- ☐ Authentication: Bearer dXNlcm5hbWU6cGFzc3dvcmQ=
- ☐ Bearer-Token: dXNlcm5hbWU6cGFzc3dvcmQ=
- ☐ Authorization: Bearer dXNlcm5hbWU6cGFzc3dvcmQ=

- A. Option A
- B. Option B
- C. Option C
- D. Option D
- E. Option E

Answer: BE

NEW QUESTION 19

- (Exam Topic 2)

While developing a real-Time VoIP application on a Cisco Webex platform, users report that their voice gets chopped or parts of the conversation drop out. Which network constraint is impacting the application?

- A. latency
- B. jitter
- C. capacity
- D. delay

Answer: B

NEW QUESTION 22

- (Exam Topic 2)

A new application is being developed with specific platform requirements. The platform and application deployment and the ongoing platform management must be fully automated. The application includes a large database component that has significant disk I/O requirements. Which application deployment type meets the

requirements?

- A. Python virtual environment
- B. virtual machine
- C. bare metal
- D. container

Answer: B

NEW QUESTION 26

- (Exam Topic 2)

How do XML and JSON compare regarding functionality?

- A. JSON natively supports arrays and XML does not natively support arrays.
- B. XML provides support for mapping data structures into host languages than JSON.
- C. XML provides more human readability than JSON.
- D. JSON provides support for data types than XML.

Answer: A

NEW QUESTION 30

- (Exam Topic 2)

```
GET getNetworkHttpServers
https://api.meraki.com/api/v0/networks/:networkId/httpServers
List the HTTP servers for a network

AUTHORIZATION
API Key

This request is using an authorization helper from collection Meraki Dashboard
API
HEADERS
Accept
*/*
```

Refer to the exhibit. A developer is creating a Python script to obtain a list of HTTP servers on a network named office_east by using the Cisco Meraki API. The request has these requirements:

- Must time out if the response is not received within 2 seconds.
- Must utilize client certificates and SSL certificate verification.
- Must utilize basic authentication that uses a username of admin and a password of cisco.
- Must save the response to an object named response.

Drag and drop the code snippets from the bottom onto the blanks in the code to meet the requirements. Not all options are used.

```
import requests
from requests.auth import HTTPBasicAuth
network = 'office east'
url = 'https://api.meraki.com/api/v0/networks/{}/httpServers'.format (network)
[ ] = requests.get(url=url, headers={ 'Accept': '*/*' },
verify='/etc/pki/tls/certs/ca.pem',
timeout= [ ] ,
[ ] = ('/etc/pki/tls/certs/client.pem',
'/etc/pki/tls/certs/client.key'),
auth= [ ] ('admin', 'cisco'))
response.status_code
```

token

response

2

HTTPTokenAuth

HTTPBasicAuth

cert

- A. Mastered
- B. Not Mastered

Answer: A

Explanation:

Text Description automatically generated

Reference:

<https://community.cisco.com/t5/networking-blogs/authenticating-rest-api-calls-to-dnac-getting-started/ba-p/3658>

NEW QUESTION 31

- (Exam Topic 2)

What is a benefit of test-driven development?

- A. early customer involvement
- B. increased code quality
- C. faster releases that have minimal features
- D. strict adherence to product requirements

Answer: D

NEW QUESTION 33

- (Exam Topic 2)

Drag and drop the code snippets from the bottom into the Python script to write API output to a csv file. Not all options are used.

```
#!/usr/bin/env python3
import csv
import json
import 
#Create a request to grab info in api
response = requests. ('http://api.zippopotam.us/us/80301')

try:
    with open('80301.json', 'w') as outfile:
        json.dump(response.json(), outfile)
    print(.json())
except Exception as e:
    print(e)

with open('80301.csv', 'w') as outfile:
    json.dump(response.json(), outfile)
print(response.)
```

response

requests

request

get

status_code

status

- A. Mastered
- B. Not Mastered

Answer: A

Explanation:

Graphical user interface, text, application Description automatically generated

NEW QUESTION 38

- (Exam Topic 2)

What is the difference between YAML and JSON data structure?

- A. YAML uses spaces; JSON uses parentheses
- B. YAML uses indentation; JSON uses brackets and braces
- C. YAML uses brackets and braces; JSON uses indentation
- D. YAML uses parentheses; JSON uses spaces

Answer: A

NEW QUESTION 39

- (Exam Topic 2)

Refer to the exhibit.

SDK Documentation:

Class: Devices

Device List: `get_device_list()`
Get device: `get_device_by_id(id)`
Delete device: `delete_device_by_id(id)`
Device status: `inventoryStatusDetail`
Device Parameters:
 `id`
 `upTime`
 `type`

A Python script must delete all Cisco Catayst 9300 Series switches that have an uptime that is greater than 90 days The script must also query for the status of all the other devices Drag and drop the code from the bottom onto the bottom box the code is missing to complete the script Not at options are used

Answer Area

```
from dnacentersdk import DNACenterAPI

device_type = "Cisco Catalyst 9300 Switch"
api_session = DNACenterAPI(
    base_url="https://sandboxdnac.cisco.com",
    username="user",password="password"
)
```

```
devices = 
```

```
for device in devices:
    if int(device.upTime.split()[0]) > 90:
        if device.type == device type:
            output = 
            print(output)
```

```
else:
    selected device = 
    output = 
    print (output)
```

`selected_device.response.inventoryStatusDetail(device)`

`api_session.devices.delete_device_by_id(device.id)`

`api_session.devices.get_device_by_id(device.id)`

`selected_device.response.inventoryStatusDetail`

`api_session.devices.get_device_list().response`

- A. Mastered
- B. Not Mastered

Answer: A

Explanation:

Table Description automatically generated

NEW QUESTION 43

- (Exam Topic 2)

Refer to the exhibit.

```
1 #import dnac sdk
2 from dnacentersdk import DNACenterAPI
3 #connection to dnac
4
5 username = 'user1'
6 password = 'secret'
7 base_url = 'https://192.168.1.1'
8
9 dnac = DNACenterAPI(username=username, password=password, base_url=base_url,
10 • version='1.3.3', verify=False)
11
12 # Get list of ports on device using get all interfaces API call
13 port_list_1 = [item['portName'] for item in
14 • dnac.devices.get_all_interfaces()['response']]
15
16 if 'da4606c3-63ad-4ed4-8f35-6bfec7c2df04' in
17 • item['deviceId']]
18
19 # Sort list items
20 port_list_1.sort()
21 # Check the number of ports on the device
22 print(f'The list of interfaces contains {len(port_list_1)} items.')
23
24 # Output
25 # The list of interfaces contains 38 items.
26
27
28 # Get list of interfaces using the get interface info by device id api call
29 port_list_2 = [item['portName'] for item in
30 • dnac.devices.get_interface_info_by_id('da4606c3-63ad-4ed4-8f35-
31 • 6bfec7c2df04')['response']]
32
33 # Sort list items
34 port_list_2.sort()
35 # Check the number of ports on the device
36 print(f'The list of interfaces contains {len(port_list_2)} items.')
37
38 # Output
39 # The list of interfaces contains 54 items.
```

An engineer writes a Python script that uses two different API calls to query Cisco DNA Center for the number of interfaces on a device. The engineer notices that the two API calls produce different results. Why are fewer interfaces returned for the same device when the 'get_all_interfaces' API call is used?

- A. times out
- B. rate limit
- C. pagination
- D. invalid password

Answer: C

NEW QUESTION 46

- (Exam Topic 2)

Which Cisco platform provides organization-wide automation, security, policy enforcement, any agility across wired and wireless networks?

- A. Cisco ACI
- B. Cisco DNA Center
- C. Cisco Umbrella
- D. Cisco SD-WAN

Answer: B

NEW QUESTION 50

- (Exam Topic 2)

What is the function of IP address in networking?

- A. specifies the type of traffic that is allowed to roam on a network
- B. represents the unique ID that is assigned to one host on a network
- C. specifies resource's location and the mechanism to retrieve it
- D. represents a network connection on specific devices

Answer: B

NEW QUESTION 55

- (Exam Topic 2)

In the test-driven development model, what is changed after a test fails?

- A. test
- B. schedule
- C. project requirements
- D. code

Answer: D

Explanation:

Reference:

<https://www.guru99.com/test-driven-development.html#:~:text=In%20simple%20terms%2C%20test%20cases,c>

NEW QUESTION 58

- (Exam Topic 2)

Refer to the exhibit.

```
# base image
FROM alpine

# Install python and pip
RUN apk add --update py2-pip

# Install python modules needed by the python app
COPY requirements.txt /usr/src/app/
RUN pip install --no-cache-dir -r /usr/src/app/requirements.txt

#copy local files for the app to run
COPY app.py /usr/src/app/
COPY templates/index.html /usr/src/app/templates/

EXPOSE 8080

#run the application
CMD ["python", "/usr/src/app/app.py"]
```

Which function does the EXPOSE line perform when building an image from this Dockerfile?

- A. Local port 8080 of the container that launched with this docker image is accessible from co-hosted containers and external clients.
- B. Local port 8080 is not reachable at all because no IP address is specified along with the EXPOSE command of the Dockerfile.
- C. Local port 8080 is accessible from other containers running on the same docker host as the container that launched with this docker image.
- D. Local port 8080 of the container that launched with this docker image is accessible to external clients.

Answer: C

Explanation:

By default, the EXPOSE instruction does not expose the container's ports to be accessible from the host. In other words, it only makes the stated ports available for inter-container interaction.

Whereas publishing a port using either -P or -p exposes it, exposing a port using EXPOSE or --expose does not publish it.

So, while exposed ports can only be accessed internally, published ports can be accessible by external containers and services.

<https://www.whitesourcesoftware.com/free-developer-tools/blog/docker-expose-port/>

NEW QUESTION 59

- (Exam Topic 2)

A new application is being developed that must be hardware independent. The application includes an administrative component which is accessed using a Windows desktop GUI. Installation and management of the environment must be fully automated. Which application deployment type meets the requirements?

- A. bare metal
- B. virtual Python environment
- C. container
- D. virtual machine

Answer: C

NEW QUESTION 61

- (Exam Topic 2)

Drag and drop the code from the bottom onto the box where the code is missing in the Bash script to complete the missing assignment.

```
#!/bin/bash

= 'date +%b-%d-%y'

= /home/usr/path/backup-$BACKUPTIME.tar.gz

= /home/usr/path/data_folder

tar -cpzf $DESTINATION $SOURCEFOLDER
```

BACKUPTIME

SOURCEFOLDER

DESTINATION

- A. Mastered
- B. Not Mastered

Answer: A

Explanation:

```
#!/bin/bash

BACKUPTIME    = `date +%b-%d-%y`
DESTINATION   = /home/usr/path/backup-$BACKUPTIME.tar.gz
SOURCEFOLDER  = /home/usr/path/data_folder

tar -cpzf $DESTINATION $SOURCEFOLDER
```

BACKUPTIME SOURCEFOLDER DESTINATION

NEW QUESTION 65

- (Exam Topic 2)

Refer to the exhibit.

```
user_manager.py
1  import psycopg2
2  import json, sys
3
4  # Load config file
5  config = None
6  with open('config.json') as config_file:
7      config = json.load(config_file)
8  if not config:
9      print("Error loading configuration file.")
10     sys.exit(1)
11
12 connection = psycopg2.connect(
13     database="users",
14     host=config["DB_USER"], user=config["DB_USER"], password=config["DB_PWD"]
15 )
16 connection.set_session()
17
18 def has_admin_role(username):
19     with connection.cursor() as cursor:
20         query = 'SELECT admin_role FROM users WHERE username = {0}'
21         cursor.execute(query.format(username))
22         result = cursor.fetchone()
23     return result
24
25 has_admin_role("ops.shared")

config.json
1  {
2      "DB_USER": "pguser",
3      "DB_PWD": "@123Qwer%4",
4      "DB_HOST": "devnetdb.example.com"
5  }
```

An engineer must check the admin rights of users on a database regularly and prepares the Python script to automate the process. The script connects to the database and runs a query. What is a security issue about the secrets in the code that relates to secret protection?

- A. They must be stored in configuration files if there is a possibility of leakage.
- B. They must be Base64-encoded if stored in the user database.
- C. They must be encrypted if stored in the user database.
- D. They must be stored in configuration files if no authentication will be used.

Answer: D

NEW QUESTION 69

- (Exam Topic 2)

A developer creates a script that configured multiple Cisco IOS XE devices in a corporate infrastructure. The internal test environment is unavailable, and no maintenance window is available to test on a low-priority production environment. Which resource is used to test the code before it is applied to the production environment?

- A. Code Exchange
- B. Cisco DevNet Learning Labs

- C. Cisco DevNet Sandbox
- D. Cisco Support

Answer: C

Explanation:

Reference: <https://developer.cisco.com/site/sandbox/>

NEW QUESTION 74

- (Exam Topic 2)

Which tool is used to block all traffic to the domain by using a single API call?

- A. Cisco ISE
- B. Cisco Firepower
- C. Cisco AMP
- D. Cisco Umbrella

Answer: B

NEW QUESTION 76

- (Exam Topic 2)

Drag and drop the code snippets from the bottom to the blanks in the code to complete the HTTP response. Not all options are used.

Request URL: <http://www.example.com/>

: GET

: 200 OK

Remote Address: [2606:2800:220:1:248:1893:25c8:1946]:80

Referrer Policy: strict-origin-when-cross-origin

Response Headersview source

Accept-Ranges: bytes

Age: 396561

Cache-Control: max-age=604800

: gzip

Content-Length: 648

: text/html; charset=UTF-8

Date: Sat, 20 Nov 2020 20:49:34 GMT

Etag: "3147526947+ident"

Expires: Sat, 21 Nov 2020 20:49:34 GMT

Last-Modified: Thu, 17 Oct 2019 07:18:26 GMT

Server: ECS (dna/63AA)

Vary: Accept-Encoding

X-Cache: HIT

Request Headersview source

Accept: text/html,application/xhtml+xml,application/xml;q=0.9,
image/avif,image/webp,image/apng,*/*;q=0.8,application/signed-exchange;v=b3;q=0.9

Accept-Encoding: gzip, deflate

Accept-Language: en-US,en;q=0.9

Request Type

Request Control

Status Code

Content-Type

Request Method

Content Code

Content-Encoding

- A. Mastered
- B. Not Mastered

Answer: A

Explanation:

Graphical user interface, text, application Description automatically generated

NEW QUESTION 77

- (Exam Topic 2)

How does a synchronous API request differ from an asynchronous API request?

- A. clients receive responses with a task id for further processing
- B. clients subscribe to a webhook for operation results
- C. clients are able to access the results immediately
- D. clients poll for the status of the execution of operations

Answer: C

NEW QUESTION 82

- (Exam Topic 2)

What are two benefits of using VLANs? (Choose two.)

- A. limits the devices that can join the network
- B. segments the broadcast domain
- C. extends the broadcast domain
- D. allows all network devices to be accessible from any host on the network
- E. enables the logical grouping of devices that belong to different Layer 2 devices

Answer: BE

NEW QUESTION 84

- (Exam Topic 2)

Where is an IP packet routed if the packet does not match any routes in the routing table?

- A. firewall
- B. load balancer
- C. central switch
- D. default gateway

Answer: D

NEW QUESTION 85

- (Exam Topic 2)

Refer to the exhibit.

Returns the wireless lan controller info with given device ID:

```
{
  "response": {
    "adminEnabledPorts": [ 0 ],
    "apGroupName": "string",
    "deviceId": "string",
    "ethMacAddress": "string",
    "flexGroupName": "string",
    "id": "string",
    "instanceTenantId": "string",
    "instanceUuid": "string",
    "lagModeEnabled": true,
    "netconfEnabled": true,
    "wirelessLicenseInfo": "ADVANTAGE",
    "wirelessPackageInstalled": true
  },
  "version": "string"
}
```

Drag and drop the code from the bottom onto the blanks in the code to construct a cURL command using the Cisco DNA Center API. which will provide the details of a WLAN controller with Id af397748444. Not at options are used.

Answer Area

```
curl -L --request GET \
--url https://dna/intent/api/v1/ / / \
--header 'Content-Type: application/json' \
--header 'Accept:application/json'
```

network-device

id

wireless

wireless-info

controller

details

- A. Mastered
- B. Not Mastered

Answer: A

Explanation:

Diagram Description automatically generated

NEW QUESTION 86

- (Exam Topic 2)

Why is refactoring done during test-driven development?

- A. to enable larger objects and longer methods
- B. to improve maintainability and readability
- C. to ensure that the previous uses of the objects are explained
- D. to ensure the duplication of essential code

Answer: B

NEW QUESTION 88

- (Exam Topic 2)

An engineer must configure Cisco Nexus devices and wants to automate this workflow. The engineer enables the Cisco NX-OS REST API to configure the devices by using an Ansible playbook. Before running the code, which resource must be used to verify that the code works correctly?

- A. Cisco NX-OS SDK
- B. Cisco Learning Labs
- C. Cisco Code Exchange
- D. Cisco Modeling Labs

Answer: A

NEW QUESTION 90

- (Exam Topic 2)

Which HTTP code group is issued when a request is received successfully, understood, and processed?

- A. 2xx
- B. 3xx
- C. 4xx
- D. 5xx

Answer: A

Explanation:

[https://www.w3.org/Protocols/rfc2616/rfc2616-sec10.html#:~:text=10.2%20Successful%20xx,received%2C%](https://www.w3.org/Protocols/rfc2616/rfc2616-sec10.html#:~:text=10.2%20Successful%20xx,received%2C%20)

NEW QUESTION 91

- (Exam Topic 2)

Refer to the exhibit.

```
1  - hosts: servers
2    tasks:
3
4    - name: task1
5      apt:
6        name: apache2
7        state: absent
8
9    - name: task2
10     apt:
11       name: nginx
12       state: present
13
14    - name: task3
15     apt:
16       name: "*"
17       state: latest
```

A developer must check packages on web load balancers that use nginx packages. The developer updates the servers as required in Ansible inventory and prepares an Ansible playbook to automate this workflow on related servers. Which process is being automated by the Ansible playbook?

- A. verifying that nginx is installed only if apache2 is unavailable on the system, and then updating all the other packages
- B. verifying, without installing, that apache2 is unavailable and that nginx is installed, and then updating the repository to the latest version
- C. uninstalling the apache2 server, installing the nginx server, and then updating all the packages to the latest version
- D. installing nginx, uninstalling apache2, and then verifying that the package repository is at the latest version

Answer: B

NEW QUESTION 95

- (Exam Topic 2)

Refer to the exhibit.

```
1 #/bin/bash
2
3 curl https://ciscoDevnet.com/devnet-0.13.tar.gz -o /tmp/devnet.tar.gz
4 tar -zxvf /tmp/devnet.tar.gz
5 mkdir /tmp/devnet && pushd /tmp/devnet
6
7 ./configure && make && make install
8
9 systemctl enable devnet
10 systemctl start devnet
```

A network engineer works on a Cisco DevNet application that is available for download on the Cisco DevNet website. The engineer prepares a bash script to automate operations that relate to the application. Which workflow is being automated in the bash script?

- A. compilation and configuration of the Cisco DevNet application so that it must be started manually
- B. compilation, installation, and configuration of the Cisco DevNet application so that it starts automatically
- C. compilation and installation of the Cisco DevNet application for an autonomous deployment model
- D. installation and configuration of the Cisco DevNet application so that it starts manually

Answer: B

NEW QUESTION 97

- (Exam Topic 2)

What is used in JSON to represent a Python Tuple?

- A. Object
- B. Array
- C. Dict
- D. Collection

Answer: B

NEW QUESTION 98

- (Exam Topic 2)

Several teams at a company are developing a new CRM solution to track customer interactions with a goal of improving customer satisfaction and driving higher revenue. The proposed solution contains these components:

- MySQL database that stores data about customers
- HTML5 and JavaScript UI that runs on Apache
- REST API written in Python

What are two advantages of applying the MVC design pattern to the development of the solution? (Choose two.)

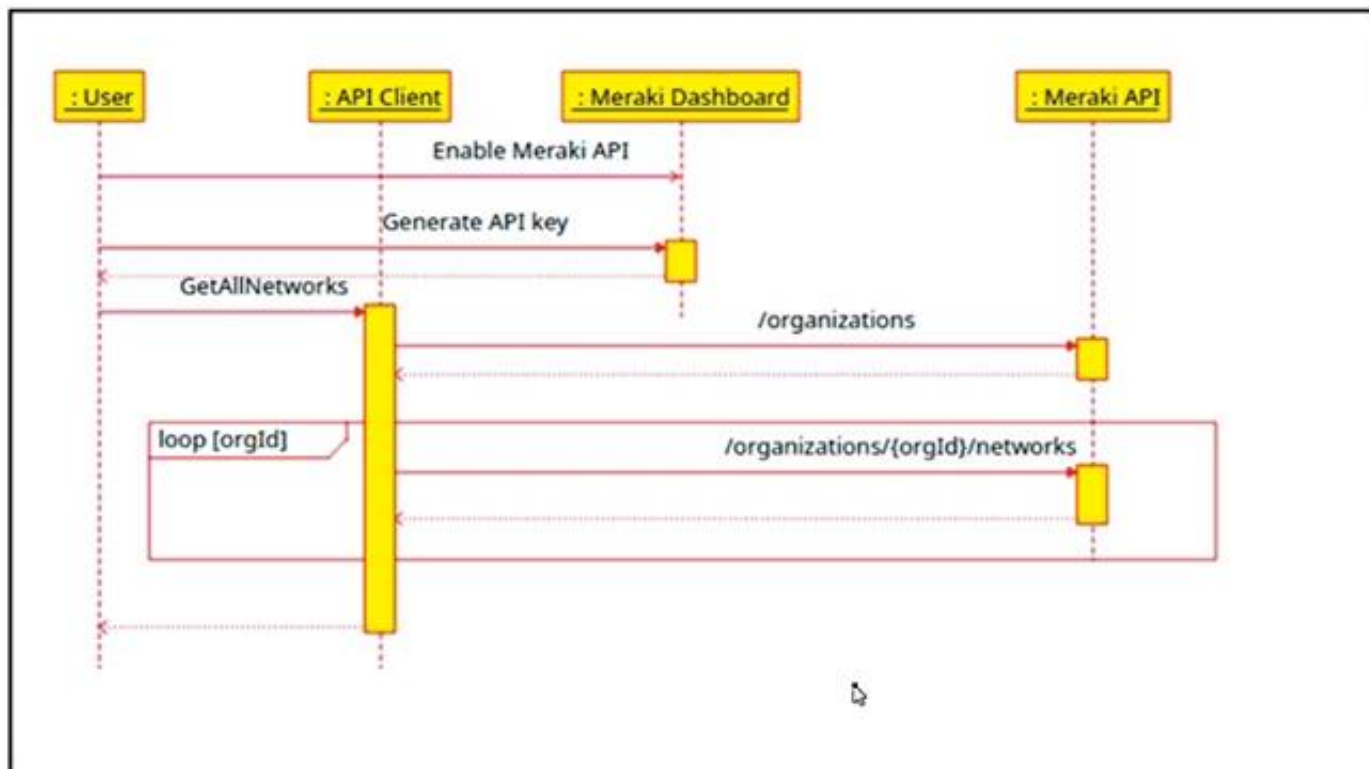
- A. to enable multiple views of the same data to be presented to different groups of users
- B. to provide separation between the view and the model by ensuring that all logic is separated out into the controller
- C. to ensure data consistency, which requires that changes to the view are also made to the model
- D. to ensure that only one instance of the data model can be created
- E. to provide only a single view of the data to ensure consistency

Answer: BD

NEW QUESTION 102

- (Exam Topic 2)

Refer to the exhibit.



The Cisco Meraki API manages two organizations. In each organization, two independent networks are defined. How many calls to the /organizations/{orgId}networks endpoint will be run parallel by the GetAllNetwork function of the API client?

- A. 1
- B. 2
- C. 4

Answer: C

NEW QUESTION 105

- (Exam Topic 2)

Which implementation creates a group of devices on one or more LANs that are configured to communicate as if they were attached to the same wire?

- A. WLAN
- B. VLAN
- C. IPsec
- D. HSRP

Answer: B

NEW QUESTION 110

- (Exam Topic 2)

Refer to the exhibit.



Which JSON snippet configures a new interface according to YANG model?

A)


```
“ietf-interfaces:interface”: {  
  “name”: “Loopback100”,  
  “enabled”: true,  
  “ietf-ip:ipv4”: {  
    “address”: [  
      {  
        “ip”: “10.255.254.1”,  
        “netmask”: “255.255.255.0”  
      } ] }  
}
```

B)

```
“ietf-interfaces”: {  
  interface: {  
    “name”: “Loopback100”,  
    “enabled”: true,  
    “ietf-ip”: {  
      ipv4: {  
        “address”: [  
          {  
            “ip”: “10.255.254.1”,  
            “netmask”: “255.255.255.0”  
          } ] } }  
}
```

C)

```
“ interface” {  
  “name”: “Loopback100”,  
  “enabled”: true,  
  “ipv4”: {  
    “address”: [  
      {  
        “ip”: “10.255.254.1”,  
        “netmask”: “255.255.255.0”  
      } ] }  
}
```

D)

```
“ietf-interfaces:interface”: {  
  “name”: “Loopback100”,  
  “enabled”: true,  
  “ietf-ip:ipv4:address”: [  
    {  
      “ip”: “10.255.254.1”,  
      “netmask”: “255.255.255.0”  
    } ]  
}
```

- A. Option A
- B. Option B
- C. Option C
- D. Option D

Answer: B

NEW QUESTION 114

- (Exam Topic 2)

```
1  import requests
2
3  headers = {"X-Cisco-Meraki-API-Key": "KEY1234"}
4  BASE_URL = "https://api-mp.meraki.com/api/v1"
5  FIRST_URL = "/organizations"
6  SECOND_URL = "/networks"
7  THIRD_URL = "clients"
8
9  def first_loop(info):
10     for item in info:
11         if item["name"] == "ACME":
12             URL = BASE_URL + FIRST_URL + "/" + item["id"] + "/" + SECOND_URL
13             response = requests.request("GET", URL, headers=headers)
14             return second_loop(response.json())
15
16  def second_loop(info):
17     for item in info:
18         if item["name"] == "BLDG21":
19             URL = BASE_URL + SECOND_URL + "/" + item["id"] + "/" + THIRD_URL
20             response = requests.request("GET", URL, headers=headers)
21             return third_loop(response.json())
22
23  def third_loop(info):
24     for item in info:
25         return item
26
27  response = requests.request("GET", BASE_URL + FIRST_URL, headers=headers)
28  info = first_loop(response.json())
29  for item in info:
30     print (item["id"])
```

Refer to the exhibit. A network engineer must collect information from the network. The engineer prepares a script to automate workflow by using Cisco Meraki API. The script must run over nested loops to collect organization and network information and uses the collected data for final collection. Which process is being automated by using the Python script?

- A. Gather the IDs of the ACME organization, the BLDG21 network, and the dents on the network
- B. Provide the BLDG21 network information if it is part of the ACME organization
- C. Collect the IDs of the clients on the BLDG21 network
- D. List the IDs from the ACME organization

Answer: A

NEW QUESTION 118

- (Exam Topic 2)

Which tool allows changes to the configuration management toolset to be tested?

- A. Cisco VIRL
- B. NAPALM
- C. Ansible
- D. pyATS

Answer: D

NEW QUESTION 123

- (Exam Topic 2)

What is a functionality of the Waterfall method as compared to the Agile method for software development?

- A. Waterfall increases agility to implement faster while Agile promotes reliability.
- B. A phase begins after the previous phase has ended in Waterfall while Agile phases run in parallel.
- C. Customers get feedback during the process in Waterfall while they can see the result at the end in Agile.
- D. Requirements can be updated in Waterfall while in Agile it should be gathered in the beginning.

Answer: B

NEW QUESTION 128

- (Exam Topic 2)

Refer to the exhibit.

```
<rpc message-id="101" xmlns="urn:ietf:params:xml:ns:Netconf:base:1.0">
  <get-conflg>
    <source>
      <running/>
    </source>
    <filter>
      <interfaces xmlns="urn:ietf:params:xml:ns:yang:ietf-interfaces">
        <interface>
          <name/>
        </interface>
      </interfaces>
    </filter>
  </get-conflg>
</rpc>
```

A network engineer uses model-driven programmability to monitor and perform changes on the network. The network engineer decides to use the NETCONF RPC message to complete one of their tasks. What is accomplished by sending the RPC message?

- A. The running-config of the device is returned.
- B. The name of each interface is reset to a default name.
- C. All the YANG capabilities supported by the device are returned.
- D. A list of interface names is returned.

Answer: D

NEW QUESTION 130

- (Exam Topic 2)

A developer created a new secure API and is testing the functionality locally. The API was added to a container for further testing, and other team members and applications need to connect to the API. Which command exposes the API in the container as port 8443 and allows connections external to the host?

- A. docker run -p 127.0.0.1:80:8443/tcp myapiservice
- B. docker run -p 0.0.0.0:443:8443/tcp myapiservice
- C. docker run -p 0.0.0.0:8443:443/tcp myapiservice
- D. docker run -p 127.0.0.1:443:8443/tcp myapiservice

Answer: C

NEW QUESTION 133

- (Exam Topic 2)

Refer to the exhibit.

```
diff --git a/ciscoaxl/axl.py b/ciscoaxl/axl.py
index bc7727e..d66ef4d 100644
--- a/ciscoaxl/axl.py
+++ b/ciscoaxl/axl.py
@@ -99,7 +99,7 @@ class axl(object):
     :return: result dictionary
     """
     try:
-        return self.client.executeSQLUpdate(query)
+        return self.client.executeSQLUpdate(query) ['return']
     except Fault as e:
         return e

diff --git a/setup.py b/setup.py
index df79ef4..1470b05 100644
--- a/setup.py
+++ b/setup.py
@@ -5,7 +5,7 @@ with open("README.md", "r") as fh:

    setup(
        name="ciscoaxl",
-        version="0.14",
+        version="0.141",
        author="User 1",
        author_email="user1@example.com",
        description="Cisco CUCM AXL Library. Simple to use.",
```

Which two files are being edited in the unified diff? (Choose two.)

- A. README.md
- B. setup.py
- C. axl.py
- D. ciscoaxl.py
- E. index.py

Answer: BC

NEW QUESTION 136

- (Exam Topic 2)

How does a developer create and switch to a new branch called "my-bug-fix" to develop a product fix?

- A. git checkout -b my-bug-fix
- B. git branch -b my-bug-fix
- C. git branch my-bug-fix
- D. git checkout my-bug-fix

Answer: A

Explanation:

<https://www.shellhacks.com/git-create-new-branch-and-checkout/>

NEW QUESTION 141

- (Exam Topic 2)

Which HTTP response code should be returned when the request is completed, but there is no content to send for the request?

- A. A.-100B.204C.302D.402

Answer: B

Explanation:

Reference: https://developer.mozilla.org/en-US/docs/Web/HTTP/Status#successful_responses

NEW QUESTION 145

- (Exam Topic 2)

```
HTTP/1.1 200 OK
Date: Mon, 27 Jul 2009 12:28:53 GMT
Server: nginx
Last-Modified: Wed, 22 Jan 2020 19:15:56 GMT
Content-Length: 88
Content-Type: application/json
Connection: keep-alive

{
  "id": "y123987jdkl",
  "status": "online",
  "type": "switch"
}
```

Which data is specified in the response header?

- A. {"id": "y123987jdkl". HTTP/1.1 200 OK"status: "online", "type": "switch"}
- B. HTTP/1.1 200 OK
- C. "type", "switch"
- D. Content-Type

Answer: B

NEW QUESTION 149

- (Exam Topic 1)

What should a CI/CD pipeline aim to achieve?

- A. to allow manual testing before deployment
- B. to require minimal manual interaction
- C. to support new deployments on a fixed monthly schedule
- D. to provide a documented process for feedback

Answer: A

NEW QUESTION 150

- (Exam Topic 1)

Fill in the blanks to complete the statement.

Given a username of "devnet" And a password "Cisco123", applications must create a base64 encoding of the string " _____ " when sanding HTTP requests to an API that uses _____ authentication.

Given a username of "devnet" and a password of "cisco123", applications must create a base64 encoding of the string " _____ " when sending HTTP requests to an API that uses _____ authentication.

- A. Mastered
- B. Not Mastered

Answer: A

Explanation:

Solution as below

Given a username of "devnet" and a password of "cisco123", applications must create a base64 encoding of the string " devnet:cisco123 " when sending HTTP requests to an API that uses Basic authentication.

NEW QUESTION 155

- (Exam Topic 1)

Refer to the exhibit.

```
class ucsm sdk . ucshandle . Uc sHandle (ip, username, password, port=None, secure=None, proxy=None)
```

Bases: ucsm sdk . uc ssession . Uc sSession

[\[source\]](#)

Uc sHandle class is the user interface point for any Uc s related communication.

- Parameters:**
- **ip (str)** – The IP or Hostname of the UCS Server
 - **username (str)** – The username as configured on the UCS Server
 - **password (str)** – The password as configured on the UCS Server
 - **port (int or None)** – The port number to be used during connection
 - **secure (bool or None)** – True for secure connection, otherwise False
 - **proxy (str)** – The proxy object to be used to connect

Given the API documentation for the UCS SDK python class, Uc sHandle, which code snippet creates a handle instance?

```
#!/usr/bin/env python3
from ucsm sdk . ucshandle import Uc sHandle
handle = Uc sHandle ("10.1.2.254", "admin", "password",
port="443", secure=True)

#!/usr/bin/env python3
import ucsm sdk . ucshandle . Uc sHandle
handle = Uc sHandle ("10.1.2.254", "admin", "password",
port=443, secure=1)

#!/usr/bin/env python3
from ucsm sdk . ucshandle import Uc sHandle
handle = Uc sHandle (ip="10.1.2.254", username="admin",
password="password", port=443, secure=True)

#!/usr/bin/env python3
from ucsm sdk . ucshandle import Uc sHandle
handle = Uc sHandle ("10.1.2.254", "admin", "password",
port="443", secure=1)
```

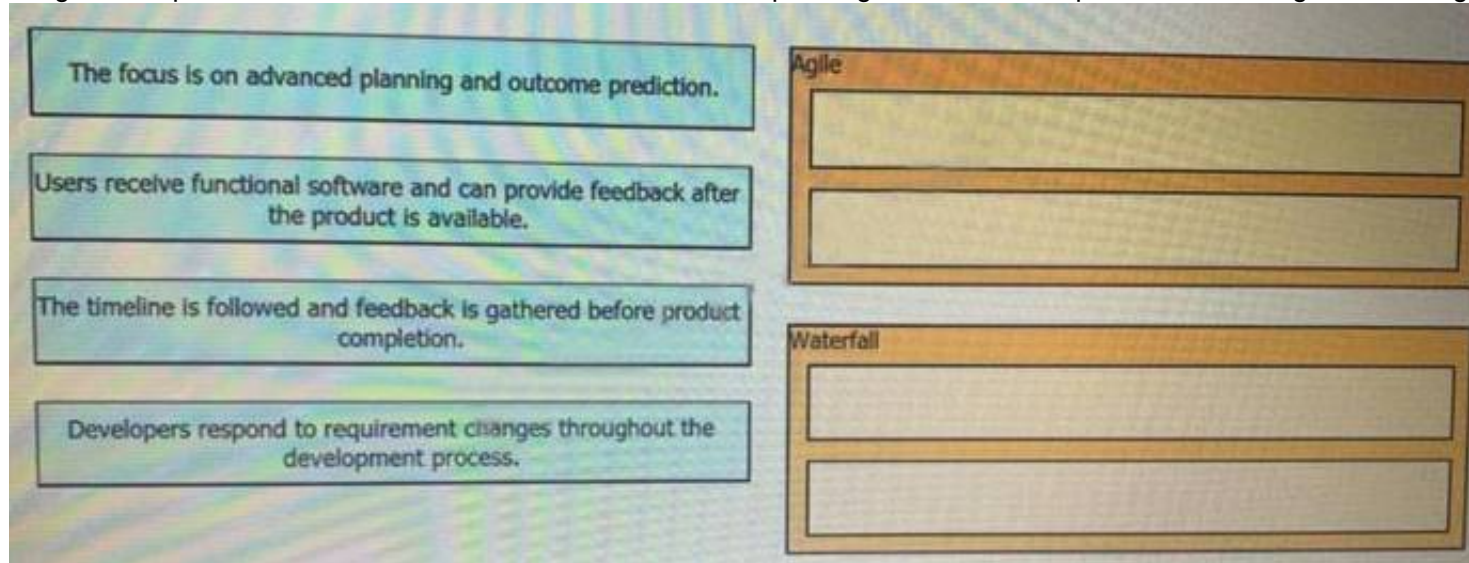
- A. Option A
- B. Option B
- C. Option C
- D. Option D

Answer: C

NEW QUESTION 158

- (Exam Topic 1)

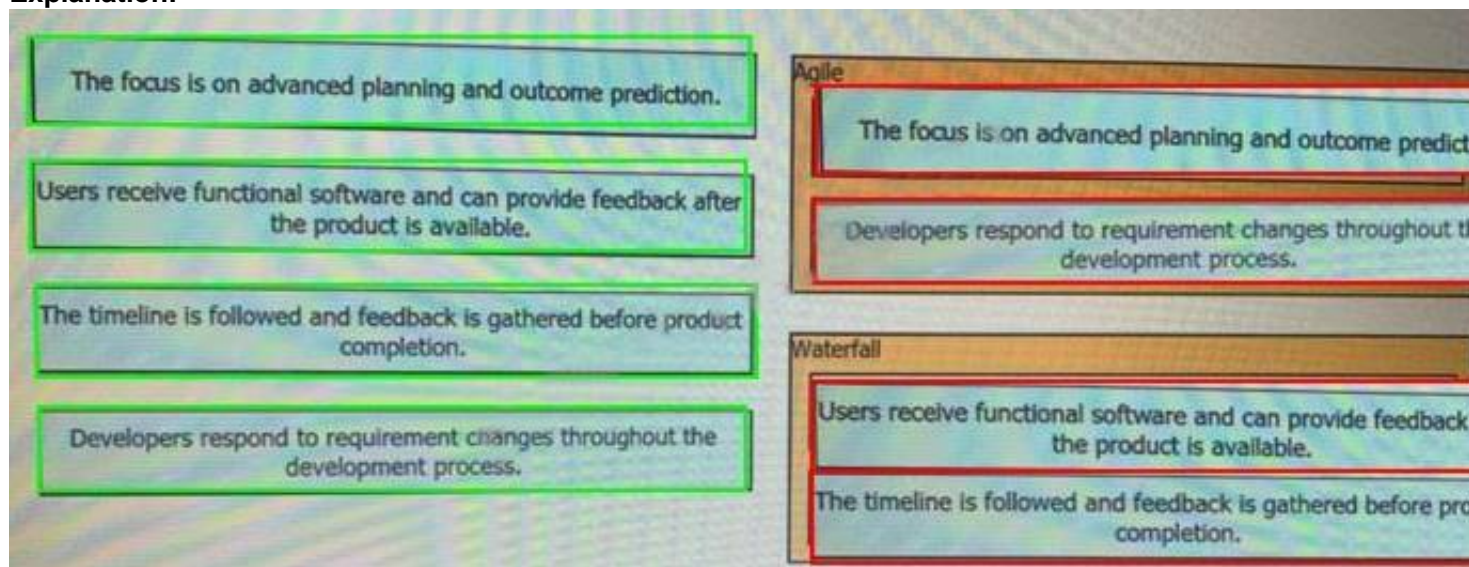
Drag and drop the characteristics from the left onto the corresponding software development methodologies on the right?



- A. Mastered
- B. Not Mastered

Answer: A

Explanation:



NEW QUESTION 159

- (Exam Topic 1)

Which HTTP status Code means that the server cannot or will not process the request because of perceived client error?

- A. 100
- B. 203
- C. 303
- D. 400

Answer: D

NEW QUESTION 162

- (Exam Topic 1)

Which API is used to obtain data voicemail ports?

- A. Finesse gadgets
- B. Cisco Unified Communications manager
- C. Webex devices
- D. Webex teams

Answer: B

Explanation:

Cisco Unified Communications Manager (CUCM) provides API access to data management, call management, and voicemail integration. Source: Cisco DevNet Fundamental Course: <https://developer.cisco.com/certification/fundamentals/>

NEW QUESTION 166

- (Exam Topic 1)

What are two benefit of managing network configuration via APIs? (Choose two.)

- A. configuration on devices becomes less complex
- B. more security due to locking out manual device configuration
- C. increased scalability and consistency of network changes
- D. eliminates the need of legacy management protocols like SNMP

E. reduction in network changes performed manually

Answer: CE

NEW QUESTION 171

- (Exam Topic 1)

Which device is a system that monitors and controls incoming and outgoing network traffic based on predetermined security rules?

- A. Switch
- B. Router
- C. Firewall
- D. Load balancer

Answer: C

NEW QUESTION 174

- (Exam Topic 1)

A small company has 5 servers and 50 clients. What are two reasons an engineer should split this network into separate client and server subnets? (Choose two)

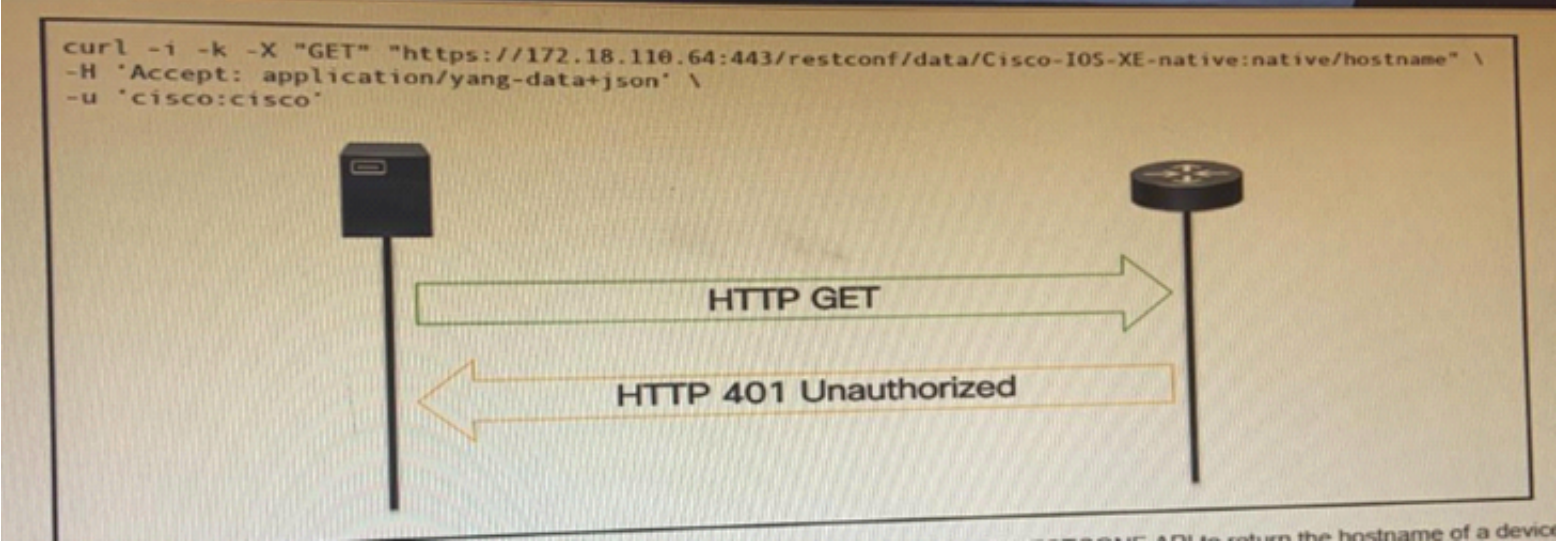
- A. Internet access to the servers will be denied on the router.
- B. A router will limit the traffic types between the clients and servers.
- C. Subnets will split domains to limit failures.
- D. A router will bridge the traffic between clients and servers.
- E. Subnets provide more IP address space for clients and servers.

Answer: AC

NEW QUESTION 175

- (Exam Topic 1)

Refer to the exhibit.



An administrator attempts to perform a GET using the Cisco IOS XE RESTCONF API to return the hostname of a device. The sequence diagram illustrated the HTTP message observed. Which change to the API request resolves the issue?

- A. Add Content-Type HTTP header with 'application/yang-data+json' using `-H 'Content-Type: application/yang-data+json'`.
- B. Use `-u cisco: cisco` instead of `-u 'cisco: cisco'`.
- C. Change the request method from `-X "GET"` to `-X "POST"`.
- D. Remove the `-H 'Accept: application/yang-data+json'` HTTP header because it is not required.

Answer: B

NEW QUESTION 178

- (Exam Topic 1)

Drag and drop the functionalities from the left onto correct networking devices on the right.

ports are different broadcast domain by default	Firewall
ports can be in the same broadcast domain	Load Balancer
uses traffic inspection to make routing decisions	Router
blocks networks traffic by default	Switch

- A. Mastered
- B. Not Mastered

Answer: A

Explanation:

1 – D, 2 – C, 3 – A, 4 – B

Reference: <https://geek-university.com/ccna/broadcast-domain-explained/>

NEW QUESTION 182

- (Exam Topic 1)

Which action does the Git command git merge allow the development to perform?

- A. Combine multiple sequence of commits into one unified history.
- B. Push changes to the remote repository
- C. Switch between branches
- D. Create, list, rename, and delete branches

Answer: A

Explanation:

Reference: <https://www.atlassian.com/git/tutorials/using-branches/git-merge>

NEW QUESTION 187

- (Exam Topic 1)

What are two characteristics of Bare Metal environments that are related to application deployment? (Choose two.)

- A. Provide the hypervisor to host virtual servers
- B. Specifically designed for container-based workloads.
- C. Provides workloads with access to hardware features
- D. Suitable for legacy application that do not support virtualization
- E. Not compatible with other cloud services such as PaaS or SaaS offerings.

Answer: CD

NEW QUESTION 189

- (Exam Topic 1)

When using the Bash shell, how is the output of the devnet command saved to a file named "output.txt"?

- A. devnet & output.txt
- B. devnet > output.txt
- C. devnet < output.txt
- D. devnet | output.txt

Answer: B

Explanation:

Reference: <https://askubuntu.com/questions/420981/how-do-i-save-terminal-output-to-a-file>

NEW QUESTION 194

- (Exam Topic 1)

Refer to the exhibit.

List the clients that have used this network in the timespan

HTTP REQUEST

GET /networks/ {networkId}/clients

PARAMETERS

t0

The beginning of the timespan for the data. The maximum lookback period is 31 days from today.

timespan

The timespan for which the information will be fetched. If specifying timespan, do not specify parameter t0. The value must be in seconds and be less than or equal to 31 days. The default is 1 day.

perPage

The number of entries per page returned. Acceptable range is 3 – 1000. Default is 10.

startingAfter

A token used by the server to indicate the start of the page. Often this is a timestamp or an ID but it is not limited to those. This parameter should not be defined by client applications. The link for the first, last, prev, or next page in the HTTP Link header should define it.

endingBefore

A token used by the server to indicate the end of the page. Often this is a timestamp or an ID but it is not limited to those. This parameter should not be defined by client applications. The link for the first, last, prev, or next page in the HTTP Link header should define it.

```
base_url = "https://api.meraki.com/api/v0"
network_id = "L_12345678910"
api_key = "1098hadpfsiapsf8ahf8ohp"
requests.<item 1> (
    <item 2> + "/"<item 3>/" + <item 4>, "/"<item 5>",
    headers = {
        "X-Cisco-Meraki-API-Key": <item 6> ,
        "Content-Type": "<item 7>"
    },
    <item 8>={"<item 9>":<item 10>})
```

Drag and drop the code from the left code from the left onto the item number on the right to complete the Meraki code to obtain a list of client which have used this network.

params	<item 1>
networks	<item 2>
timespan	<item 3>
get	<item 4>
432000	<item 5>
base_url	<item 6>
application/json	<item 7>
network_id	<item 8>
clients	<item 9>
api_key	<item 10>

- A. Mastered
- B. Not Mastered

Answer: A

Explanation:

1 - d, 2 - f, 3 - b, 4 - h, 5 - i, 6 - j, 7 - g, 8 - a, 9 - c, 10 - e

NEW QUESTION 197

- (Exam Topic 1)

A Company is looking for cloud deployment which will use the on-premise infrastructure, is user self-service, and easy to scale. Which cloud solution should be selected for these requirements?

- A. multi
- B. public
- C. private
- D. hybrid

Answer: C

NEW QUESTION 201

- (Exam Topic 1)

A developer is writing an application that a REST API and the application requires a valid from the API which element of the response is used in the conditional check?

- A. URL
- B. Status code
- C. Link
- D. Body
- E. Headers

Answer: B

NEW QUESTION 204

- (Exam Topic 1)

Refer to the exhibit.

```
docker run -p 3000:5000 f877cbf2ff33
```

A process on the host wants to access the service running inside this Docker container. Which port is used to make a connection?

- A. only outbound connections between 3000 and 5000 are possible
- B. port 3000
- C. any port between 3000 and 5000
- D. port 5000

Answer: B

NEW QUESTION 209

- (Exam Topic 1)

Refer to the exhibit.

```
def process_devices(dnac, token):  
    url = "https://{}/api/v1/network-device".format(dnac['host'])  
    headers["x-auth-token"] = token  
    response = requests.get(url, headers=headers, verify=False)  
    data = response.json()  
    for item in data['response']:  
        print(item["hostname"], " ", item["managementIpAddress"])
```

What is the function of the python script?

- A. Count and print the total number of available devices.
- B. Iterate over a list of network devices and write all device names and management IP addresses to an output file.
- C. Iterate over a list of network devices and write all device type and associated management IP address.
- D. For each device that is returned, display the device and, for each device, print the device name and management IP address.
- E. Loop through the returned list of network devices and, for each device, print the device name management IP address.

Answer: E

NEW QUESTION 210

- (Exam Topic 1)

How does requesting a synchronous API operation differ from requesting an asynchronous API operation?

- A. clients poll for the status of the execution of operations
- B. clients subscribe to a webhook for operation results
- C. clients can access the results immediately

D. clients receive responses with a task id for further processing

Answer: C

NEW QUESTION 212

- (Exam Topic 1)

What is an example of a network interface hardware address?

- A. domain name
- B. IP address
- C. workstation name
- D. MAC address

Answer: D

NEW QUESTION 215

- (Exam Topic 1)

Which principle is a value from the manifesto for Agile software development?

- A. adhering to a plan over responding to requirements
- B. detailed documentation over working software
- C. processes and tools over teams and inter actions
- D. customer collaboration over contract negotiation

Answer: D

Explanation:

Reference: https://www.cisco.com/c/dam/global/en_hk/solutions/collaboration/files/agile_product_development.pdf

NEW QUESTION 216

- (Exam Topic 1)

Refer to the exhibit.

```
#!/bin/bash
read ndir
while [ -d "$ndir" ]
do
cd $ndir
done
mkdir $ndir
```

What is the action of the Bash script that is shown?

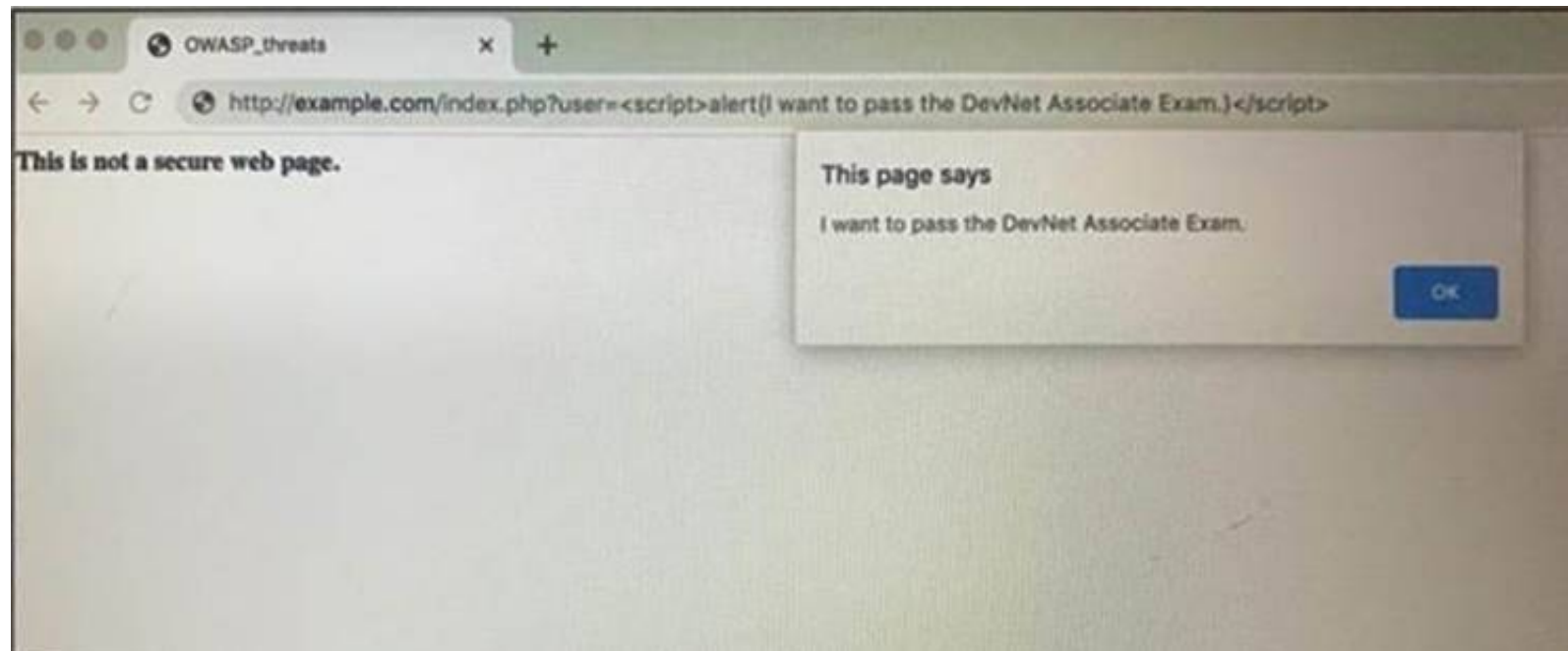
- A. The script waits until input is entered
- B. If the directory exists, the script goes into it until there is no directory with the same name, then it creates a new directory.
- C. The script goes into the directory called "\$ndir" and makes a new directory called "\$ndir"
- D. The script waits until input is entered, then it goes into the directory entered and creates a new directory with the same name.
- E. For all directories in the current folder
- F. The script goes into directory and makes a new directory.

Answer: A

NEW QUESTION 219

- (Exam Topic 1)

Refer to the exhibit.



Which OWASP threat does this example demonstrate?

- A. broken access control
- B. SQL injection
- C. man-in-the-middle
- D. cross-site scripting

Answer: D

NEW QUESTION 221

- (Exam Topic 1)

Which type of HTTP method is used by the Meraki nad webex teams APIs to send webhook notifications?

- A. HTTP GET
- B. HTTP PUT
- C. HTTP HEAD
- D. HTTP POST

Answer: D

Explanation:

Reference: <https://meraki.cisco.com/blog/tag/alerts/>

NEW QUESTION 226

- (Exam Topic 1)

Which two statements about JSON and XML are true? (Choose two.)

- A. JSON objects are collection of key value pair.
- B. The syntax of JSON contains tags, elements, and attributes.
- C. JSON arrays are an unordered set of key value pairs.
- D. The syntax of XML contains tags, elements, and attributes.
- E. XML objects are collections of key-value pairs.

Answer: AD

NEW QUESTION 231

- (Exam Topic 1)

Which two items are Cisco DevNet resources? (Choose two.)

- A. TAC support
- B. Bitbucket
- C. Sandbox
- D. Software research
- E. API Documentation

Answer: CE

Explanation:

Reference: <https://developer.cisco.com/>

NEW QUESTION 232

- (Exam Topic 1)

The project is migrated to a new codebase, the “old_project” directory must be deleted. The directory has multiple read-only files, and it must be deleted recursively without prompting for confirmation. Which bash command must be used?

- A. `rm -rf old_project`
- B. `rm -r old_project`
- C. `rmdir -p old_project`
- D. `rmdir old_project`

Answer: A

NEW QUESTION 236

- (Exam Topic 1)

Which model-driven programmability protocol does Cisco IOS XE Software support?

- A. CORBA
- B. SSH
- C. gNMI
- D. SOAP

Answer: C

Explanation:

Reference:

https://www.cisco.com/c/en/us/td/docs/ios-xml/ios/prog/configuration/1610/b_1610_programmability_cg/gnmi_

NEW QUESTION 240

- (Exam Topic 1)

Which platform has an API that be used to obtain a list of vulnerable software on user devices?

- A. Cisco Umbrella
- B. Cisco Firepower
- C. Cisco Identity Services Engine
- D. Cisco Advanced Malware Protection

Answer: D

NEW QUESTION 242

- (Exam Topic 1)

Refer to the exhibit.

URL: https://<ASA_IP>/api/access/global/rules
Method: POST
Payload:

```
{
  "destinationAddress": {
    "kind": "IPv4Address",
    "value": "10.1.1.1"
  },
  "remarks": [ ],
  "active": true
  "permit": true,
  "sourceAddress": {
    "kind": "IPv4Address",
    "value": "192.168.1.1"
  }
}
```

Response Status Code: 400 Bad Request

```
{
  "messages": [
    {
      "level": "Error",
      "code": "JSON-PARSE-ERROR",
      "details": "Unexpected character ('\"' (code 34)):"
    }
  ]
}
```

What caused the error in this API request?

- A. The API resource does not support the POST operation.
- B. The API resource does not support JSON format payloads.
- C. The submitted JSON payload includes a field that is not supported by the API resources.
- D. The submitted JSON payload has a formatting issue.

Answer: D

NEW QUESTION 247

- (Exam Topic 1)

Which two statements are true about Cisco UCS manager, Cisco Intersight APIs? (Choose two.)

- A. Cisco Intersight API interactions can be encoded in XML or JSON and require an APIs key in the HTTP header for authentication.
- B. USC Director API interactions can be XML- or JSON-encoded and require an APLs key in the HTTP header for authentication.
- C. UCS manager API interactions are XML-encoded and require a cookie in the method for authentication.
- D. Cisco Intersight uses XML to encoded API interactions and requires an API key pair for authentication.
- E. UCS manager uses JSON to encode API interactions and utilizes Base64-encoded credentials in the HTTP header for authentication.

Answer: BC

Explanation:

Reference:

https://www.cisco.com/c/en/us/td/docs/unified_computing/ucs/ucs-director/rest-api-getting-started-guide/6-5/cis

https://www.cisco.com/c/en/us/td/docs/unified_computing/ucs/sw/api/b_ucs_api_book.pdf

NEW QUESTION 250

- (Exam Topic 1)

Which status code is used by a REST API to indicate that the submitted payload is incorrect?

- A. A.-400B.403C.405D.429

Answer: A

Explanation:

Reference:

<https://community.cisco.com/t5/application-centric/apic-rest-api-produces-inconsistent-response/td-p/2758230>

NEW QUESTION 255

- (Exam Topic 1)
Refer to the exhibit.

List Rooms

List rooms.
The `title` of the room for 1:1 rooms will be the display name of the other person.
By default, lists rooms to which the authenticated user belongs.
Long result sets will be split into `pages`.

GET /v1/rooms

Query Parameters

Name	Description
<code>teamId</code> string	List rooms associated with a team, by ID.
<code>type</code> string	List rooms by tape. <i>Possible values: direct, group</i>
<code>sortBy</code> string	Sort results. <i>Possible values: id, lastactivity, created</i>
<code>max</code> number	Limit the maximum number of rooms in the response. Default: <code>100</code>

Fill in the blank to complete the query parameter and value so that the result set is returned in reverse chronological order (most recent first) based on when message were entered.

HTTP GET /v1/rooms _____

- A. Mastered
- B. Not Mastered

Answer: A

Explanation:

HTTP GET /v1/rooms ?sortBy=lastactivity

NEW QUESTION 258

- (Exam Topic 1)
Which two types of NAT are used in a network? (Choose two.)

- A. Static NAT
- B. Normal NAT
- C. Multicast NAT
- D. Dynamic NAT
- E. Router NAT

Answer: AD

Explanation:

Reference: <https://www.dummies.com/programming/networking/cisco/types-of-network-address-translation/>

NEW QUESTION 262

- (Exam Topic 1)
In python, which expression checks whether the script returns a success status code when the Requests library is used?

- A. `response.status_code== requests.ok`
- B. `response.status_code== requests.codes.ok`
- C. `response.code== requests.codes.ok`
- D. `response.status_code ! == requests.codes.ok`

Answer: B

Explanation:

Reference: <https://realpython.com/python-requests/>

NEW QUESTION 266

- (Exam Topic 1)

Which way should be used to safely the API keys?

- A. In an environment variable unique to the system database
- B. Encrypted in a configuration file that is separate from the code
- C. Encrypted in the code in a function
- D. Plain text in the code as a constant

Answer: B

NEW QUESTION 268

- (Exam Topic 1)

Which two elements are foundational principles of DevOps? (Choose two.)

- A. designing applications as microservices
- B. encouraging containers for the deployment of applications
- C. organizing cross-functional teams over organizational silos
- D. optimizing the cost of infrastructures
- E. automating over documenting

Answer: CE

NEW QUESTION 273

- (Exam Topic 1)

Which statement about authentication a RESTCONF API session with a router that runs Cisco IOS XE software is true?

- A. OAuth must be used.
- B. A token must be retrieved and the associated string must be embedded in the X-Auth-Token header.
- C. Basic authentication must be used.
- D. No authentication is required.

Answer: C

NEW QUESTION 275

- (Exam Topic 1)

An application calls a REST API and expects a result set of more than 550 records, but each time the call is made, only 25 are returned. Which feature limits the amount of data that is returned by the API?

- A. pagination
- B. payload limit
- C. rate limiting
- D. service timeouts

Answer: A

NEW QUESTION 277

- (Exam Topic 1)

What is the outcome of executing this command?

```
git clone ssh://john@exmaple.com/path/to/my-project_git
```

- A. Creates a local copy of a repository called “my project”
- B. Creates a copy of a branch called “my project”
- C. Initiates a new Git repository called “my project”
- D. Creates a new branch called “my project”

Answer: A

Explanation:

Reference: <https://www.atlassian.com/git/tutorials/setting-up-a-repository/git-clone>

NEW QUESTION 279

- (Exam Topic 1)

Which type of threat occur when an attacker can send hostile data to an interpreter within an application?

- A. Cross-site scripting
- B. Sensitive data exposure
- C. Broken authentication
- D. Injection

Answer: D

Explanation:

Reference: https://owasp.org/www-project-top-ten/OWASP_Top_Ten_2017/Top_10-2017_A1-Injection

NEW QUESTION 283

- (Exam Topic 1)

Which two encoding formats do YANG interfaces support?

- A. JSON
- B. XML
- C. XHTML
- D. Plain text
- E. BER

Answer: AB

Explanation:

Reference:

https://www.cisco.com/c/en/us/td/docs/ios-xml/ios/prog/configuration/171/b_171_programmability_cg/model_d

NEW QUESTION 285

- (Exam Topic 1)

Which two protocols are used to apply a configuration change on a Cisco IOS XE device? (Choose two)

- A. CCX
- B. RESTCONF
- C. NETCONF
- D. HSRP
- E. CDP

Answer: BC

NEW QUESTION 289

- (Exam Topic 1)

Refer to the exhibit.

```
#!/bin/bash
<item 1>='date +%b-%d-%y'

<item 2>=/home/usr/path/backup-$BACKUPTIME.tar.gz

<item 3>=/home/usr/path/data_folder

tar -cpzf $DESTINATION $SOURCEFOLDER
```

Drag and drop the variables from the left onto the item numbers on the right that match the missing assignments in the exhibit.

BACKUPTIME	<item 1>
SOURCEFOLDER	<item 2>
DESTINATION	<item 3>

- A. Mastered
- B. Not Mastered

Answer: A

Explanation:

1 – A, 2 – C, 3 – B

Reference: <https://medium.com/@fotios.floros/linux-backup-script-1722cc9c2bf6> (use tar in order to create your backup file)

NEW QUESTION 293

- (Exam Topic 1)

What is the Git command to delete a local branch named “experiment” without a warning?

- A. git branch –n experiment
- B. git branch –rm experiment
- C. git branch –f experiment

D. git branch –D experiment

Answer: D

Explanation:

Reference: <https://www.atlassian.com/git/tutorials/using-branches>

NEW QUESTION 296

- (Exam Topic 1)

Refer to the exhibit.

```
<books>
  <science>
    <biology>10.00</biology>
    <geology>9.00</geology>
    <chemistry>8.00</chemistry>
  </science>
  <math>
    <calculus>20.00</calculus>
    <algebra>12.00</algebra>
  </math>
</books>
```

Which JSON is equivalent to the XML –encoded data?

A. [{
 "books": {
 "science": {
 "biology": "10.00",
 "geology": "9.00",
 "chemistry": "8.00"
 },
 "math": {
 "calculus": "20.00",
 "algebra": "12.00"
 }
 }
}]

B. {
 "books": [
 "science": {
 "biology": "10.00",
 "geology": "9.00",
 "chemistry": "8.00"
 },
 "math": {
 "calculus": "20.00",
 "algebra": "12.00"
 }
]
}

C. {
 "books": [
 "science": {
 "biology": "10.00",
 "geology": "9.00",
 "chemistry": "8.00"
 },
 "math": {
 "calculus": "20.00",
 "algebra": "12.00"
 }
]
}

D. {
 "books": [
 "science", {
 "biology": "10.00",
 "geology": "9.00",
 "chemistry": "8.00"
 },
 "math", {
 "calculus": "20.00",
 "algebra": "12.00"
 }
]
}

- A. Option A
- B. Option B
- C. Option C
- D. Option D

Answer: A

NEW QUESTION 300

- (Exam Topic 1)

Which platform is run directly using a hypervisor?

- A. bare metal systems
- B. containers
- C. virtual machines
- D. applications

Answer: C

NEW QUESTION 305

- (Exam Topic 1)

Drag and Drop the Bash commands from the left onto the correct actions on the right.

cd~	list files in directory sorted by edited date descending
cd/	create directory
ls -l	copy file
ls -t	change directory to user \$HOME
cp	create environment variable
cp -r	change directory to file system root
mv	move file
touch	create file
mkdir	copy directory
export	list files in directory with details

- A. Mastered
- B. Not Mastered

Answer: A

Explanation:

1 - d, 2 - i, 3 - e, 4 - a, 5 - j, 6 - b, 7 - g, 8 - h, 9 - c, 10 - f

NEW QUESTION 310

- (Exam Topic 1)

Drag and drop the Docker file instructions from the onto correct descriptions on the right. Not all options are used.

FROM ubuntu:12.04	informs Docker that the container listens on the specified network port(s) at runtime
VOLUME["/var/www","/var/log/apache2","/etc/apache2"]	creates a mount point with the specified name
RUN apt-get update && apt-get install -y --force-yes apache2	configures a container that runs as an executable
ENTRYPOINT["/usr/sbin/apache2ctl","-D","FOREGROUND"]	must be the first instruction in the Docker file
EXPOSE 1521	

- A. Mastered
- B. Not Mastered

Answer: A

Explanation:

1 – E, 2 – B, 3 – D, 4 – A

NEW QUESTION 314

- (Exam Topic 1)

Refer to the exhibit.

```
{
  "items": [
    {
      "kind": "object$NetworkObj",
      "selfLink": "https://10.201.230.5/api/objects/networkobjects/db01",
      "name": "db01",
      "host": {
        "kind": "IPv4address",
        "value": "172.16.0.11"
      },
      "objectId": "db01"
    }
  ]
}
```

The JSON data in the exhibit has been parsed and stored in a variable, "data". What returns the value "172.16.0.11" ?

- A. data['items'][0]['host']['value']
- B. data['items']['1']['host']['value']
- C. data['items']['host'][1]
- D. data['items']['host']['value']

Answer: A

NEW QUESTION 318

- (Exam Topic 1)

Fill in the blanks to complete the python script to request a service ticket using the APIC-EM rest API for the user "devnetuser".

```
import requests
import json
controller = 'devnetapi.cisco.com/sandbox/apic_em'
url = "https://" + controller + "/api/va/ticket"
payload = { 'username': ' ', 'password' : '371274738' }
header = { 'Content-type': 'application/json' }
response =  post(url, data=json.dumps(payload), \
headers= , verify=False)
r_json = response.json()
print(r_json)
ticket = r_json["response"]["serviceTicket"]
print(ticket)
```

- A. Mastered
- B. Not Mastered

Answer: A

Explanation:

```
import requests
import json
controller = 'devnetapi.cisco.com/sandbox/apic_em'
url = "https://" + controller + "/api/va/ticket"
payload = { 'username': 'devnetuser', 'password': '371387657' }
header = { 'Content-type': 'application/json' }
response = requests.post(url, data=json.dumps(payload), \
headers=header, verify=False)
r_json = response.json()
print(r_json)
ticket = r_json["response"]["serviceTicket"]
print(ticket)
```

Reference: <https://developer.cisco.com/docs/apic-em/#!hello-world>

NEW QUESTION 323

- (Exam Topic 1)

Which platform is run directly using a hypervisor?

- A. Virtual
- B. Bare metal systems
- C. Containers
- D. Applications

Answer: C

NEW QUESTION 327

- (Exam Topic 1)

Which mechanism is used to consume a RESTful API design when large amounts of data are returned?

- A. Data sets
- B. Scrolling
- C. Blobs
- D. Pagination

Answer: D

Explanation:

Reference: <https://nordicapis.com/everything-you-need-to-know-about-api-pagination/>

NEW QUESTION 332

- (Exam Topic 1)

A developer is reviewing a code that was written by a colleague. It runs fine, but there are many lines of code to do a seemingly simple task repeatedly. Which action organizes the code?

- A. Refactor the code by removing any unnecessary tests
- B. Using functions, rewrite any pieces of code that are repeated
- C. Reverse engineer and rewrite the code logic
- D. Modify the code to use loops

Answer: B

NEW QUESTION 336

- (Exam Topic 1)

What is the benefit of edge computing?

- A. It reduces network latency by moving processing closer to the data source.
- B. It simplifies security as devices and processing are brought closer together
- C. It removes the need for centralized data processing.
- D. It reduces data velocity from devices or other data sources.

Answer: A

Explanation:

Reference: <https://blogs.cisco.com/networking/time-to-get-serious-about-edge-computing>

NEW QUESTION 339

- (Exam Topic 1)

Which is an advantage of using network programmability?

- A. It removes CLI access for devices.
- B. It provides for more scalable and replicable network provisioning.
- C. Manual configuration is faster.
- D. No cloud abstraction occurs.

Answer: B

NEW QUESTION 341

- (Exam Topic 1)

Which two use cases are supported by Meraki APIs? (Choose two.)

- A. Retrieve live streams from a Meraki Camera.
- B. Build a custom Captive Portal for Mobile Apps.
- C. Configure network devices via the Dashboard API.
- D. Build location-aware apps from Wi-Fi and LoRaWAN devices.
- E. Deploy applications onto the devices.

Answer: BC

NEW QUESTION 346

- (Exam Topic 1)

Which two descriptions can be given to an application that is interacting with a webhook? (Choose two.)

- A. Processor
- B. Codec
- C. Listener
- D. Receiver
- E. Transaction monitor

Answer: CD

NEW QUESTION 349

- (Exam Topic 1)

Package updates from a local server fail to download. However, the same updates work when a much slower external repository is used. Why are local updates failing?

- A. The update utility is trying to use a proxy to access the internal resource.
- B. The Internet connection is too slow.
- C. The Internet is down at the moment, which causes the local server to not be able to respond.
- D. The server is running out of disk space.

Answer: A

NEW QUESTION 352

- (Exam Topic 1)

Which line is an example of the start of a chunk from a unified diff?

- A. @@ -90,88 +20191008T1349@@
- B. @@ -20191007T1200 +88,90 @@
- C. @@ -20191007T1200 +20191008T1349@@
- D. @@ -88,10 +88,6 @@

Answer: D

Explanation:

Reference:

<https://unix.stackexchange.com/questions/252927/what-do-the-numbers-in-the-line-mean-in-output-of-diff>

NEW QUESTION 357

- (Exam Topic 1)

Users cannot access a webserver and after the traffic is captured, the capture tool shows an ICMP packet that reports "time exceeded in-transit". What is the cause of this webserver access issue?

- A. A router along the path is misrouting the packets in a wrong direction.
- B. A router along the path has the wrong time.
- C. The server is too far away and the packets require too much time to reach it.
- D. The server is too loaded and the connection could not be handled in time.

Answer: A

NEW QUESTION 362

- (Exam Topic 1)

Refer to the exhibit.


```
---
- hosts: switch2960cx
  gather_facts: no

  tasks:
    - ios_l2_interface:
      name: GigabitEthernet0/1
      state: unconfigured

    - ios_l2_interface:
      name: GigabitEthernet0/1
      mode: trunk
      native_vlan: 1
      trunk_allowed_vlans: 6-8
      state: present

    - ios_vlan:
      vlan_id: 6
      name: guest-vlan
      interfaces:
        - GigabitEthernet0/2
        - GigabitEthernet0/3

    - ios_vlan:
      vlan_id: 7
      name: corporate-vlan
      interfaces:
        - GigabitEthernet0/4

    - ios_vlan:
      vlan_id: 8
      name: iot-vlan
      interfaces:
        - GigabitEthernet0/5
```

Which two statements describe the configuration of the Ansible script if run? (Choose two.)

- A. Traffic on port 0/2 and 0/3 is connected to port 0/6.
- B. Traffic from ports 0/2 to 0/5 can flow on port 0/1 due to the trunk.
- C. Traffic can flow between ports 0/2 to 0/5 due to the trunk on port 0/1.
- D. GigabitEthernet0/2 and GigabitEthernet0/3 are access ports for VLAN 6.
- E. GigabitEthernet0/1 is left unconfigured.

Answer: BD

NEW QUESTION 363

- (Exam Topic 3)

When a Cisco IOS XE networking device is configured by using RESTCONF, what is the default data encoding method?

- A. application/yaml-data+json
- B. application/yang-data+json
- C. application/xml-data+json
- D. application/json-data+xml

Answer: D

NEW QUESTION 367

- (Exam Topic 3)

A developer must test the performance and reliability of an application. After functional and load tests are run, the application crashes due to traffic spikes from users. Which type of API constraint must be implemented to maintain reliability?

- A. rate limiting
- B. pagination
- C. payload limits
- D. filtering

Answer: A

NEW QUESTION 371

- (Exam Topic 3)

What is a characteristic of RPC APIs compared to REST APIs?

- A. Authentication is done over provisions for the service caller and vice versa for RPC API, and REST API uses HTTP headers for authentication.
- B. All communications between the client and server must be stateless for RPC API, and REST API is stateful.
- C. The architecture model for RPC API is resource-focused, and REST API is procedure-focused.
- D. The data payload must be in JSON format for RPC API, and REST API allows JSON and XML formats.

Answer: A

NEW QUESTION 372

- (Exam Topic 3)

An engineer must make changes on a network device through the management platform API. The engineer prepares a script to send the request and analyze the response, check headers, and read the body according to information inside response headers. Drag and drop the HTTP header values from the left onto the elements of an HTTP response on the right.

16974	cache-control
no-store, must-revalidate	content-length
timeout=5, max=100	keep-alive
application/json;charset=UTF-8	content-type

- A. Mastered
- B. Not Mastered

Answer: A

Explanation:

16974	no-store, must-revalidate
no-store, must-revalidate	16974
timeout=5, max=100	timeout=5, max=100
application/json;charset=UTF-8	application/json;charset=UTF-8

NEW QUESTION 375

- (Exam Topic 3)

What is a capability of the AXL API?

- A. It signs a user in to a phone that is configured for extension mobility.
- B. It pulls logs for the Cisco Tomcat service.
- C. It authenticates users who exist in Cisco Unified Communications Manager.
- D. It provides support for HTTP and HTTPS communications.

Answer: C

NEW QUESTION 376

- (Exam Topic 3)

Refer to the exhibit.

```

1 import requests
2
3 url = "https://api.meraki.com/api/v0/organizations/{{organizationId}}/insight/
* monitoredMediaServers"
4
5 payload = {
6     "name": "Sample VoIP Provider",
7     "address": "123.123.123.1"
8 }
9 headers = {
10     'Accept': '*/*',
11     'Content-Type': 'application/json'
12 }
13
14 response = requests.request("POST", url, headers=headers, data=payload)
15
16 print(response.text.encode('utf8'))

```

Which workflow does the script automate?

- A. retrieves a media server that is being monitored
- B. updates a media server that is being monitored
- C. adds a media server to be monitored
- D. deletes a media server that is being monitored

Answer: C

NEW QUESTION 381

- (Exam Topic 3)

Which technology is responsible for resolving a host name to an IP address?

- A. DNS
- B. SNMP
- C. DHCP
- D. NTP

Answer: A

NEW QUESTION 384

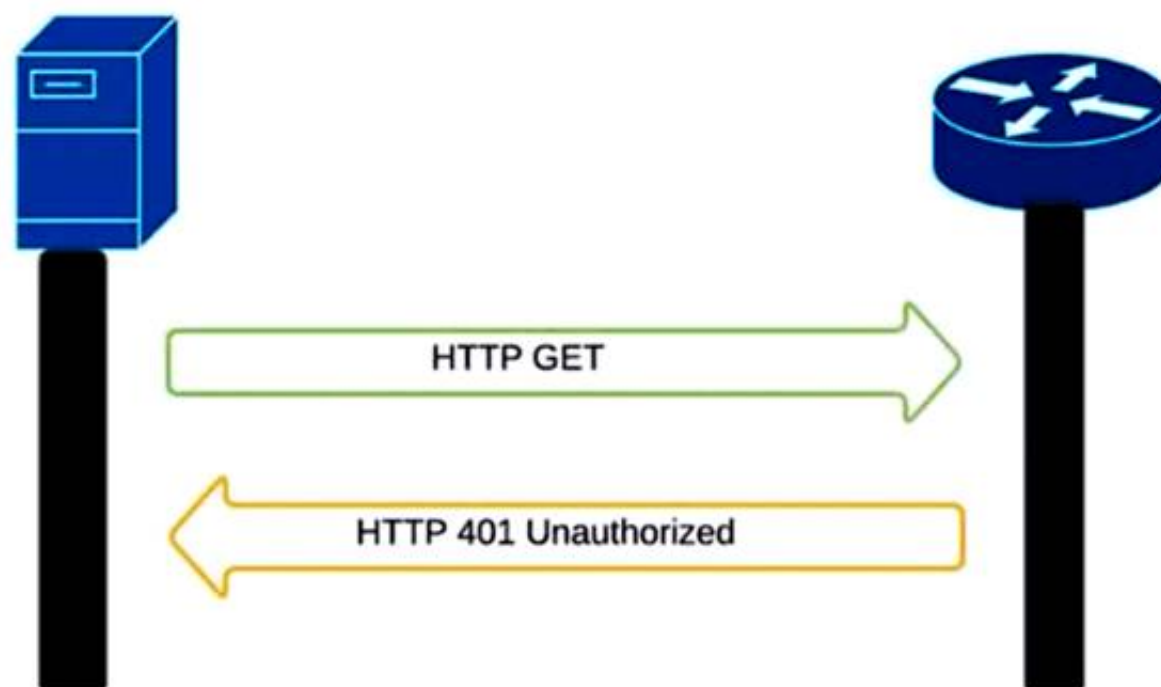
- (Exam Topic 3)

Refer to the exhibit.

```

curl -i -k -X 'GET' 'https://172.18.110.64:443/restconf/data/Cisco-IOS-XE-native:native/hostname'
-H 'Accept: application/yang-data+json' \
-u 'cisco:cisco'

```



An administrator attempts to perform a GET operation by using the Cisco IOS XE RESTCONF API to return the hostname of a device. The sequence diagram in the exhibit illustrates the HTTP messages observed. Which change to the API request resolves the issue?

- A. Remove the -H 'Accept: application/yang-data+json' header.
- B. Replace -u cisco:cisco parameter with -u 'cisco:cisco'.
- C. Change the request method from -X 'GET' to -X 'POST'.
- D. Add the -H 'Content-Type: application/yang-data+json' header.

Answer: B

NEW QUESTION 389

- (Exam Topic 3)

A company deploys an application via containers in its local data center. As soon as the application goes into production, it starts to crash at specific hours of the day. After investigation, it is concluded that the crashes are due to too many users accessing the application simultaneously. The spikes must be addressed and allow for future growth without discarding the investment already made. Which deployment model must be used?

- A. hybrid cloud
- B. edge
- C. private cloud
- D. public cloud

Answer: A

NEW QUESTION 391

- (Exam Topic 3)

Drag and drop the API characteristics from the left onto the categories on the right.

The API is seen as a function call.

There is communication between server and client.

It follows a resource-oriented model.

The API can be stateless.

REST

RPC

- A. Mastered
- B. Not Mastered

Answer: A

Explanation:

Graphical user interface, application Description automatically generated

NEW QUESTION 395

- (Exam Topic 3)

During which step of the CI/CD pipeline for infrastructure automation is code from multiple developers combined to compile and test different components?

- A. integration
- B. deployment
- C. development
- D. testing

Answer: A

NEW QUESTION 396

- (Exam Topic 3)

What is the function of an Ethernet switch in a networking environment?

- A. to switch a frame from one port to another port based on IP address
- B. to switch a frame from one port to another port based on MAC address
- C. to provide IP addressing to connected hosts
- D. to block unwanted traffic

Answer: B

NEW QUESTION 401

- (Exam Topic 3)

Drag and drop the functions from the left onto the networking devices on the right.

forwards by default

distributes unicast traffic over devices

uses traffic inspection to make forwarding decisions

distributes multicast traffic over devices

load balancer

switch

firewall

router

- A. Mastered
- B. Not Mastered

Answer: A

Explanation:

forwards by default	forwards by default
distributes unicast traffic over devices	distributes unicast traffic over devices
uses traffic inspection to make forwarding decisions	uses traffic inspection to make forwarding decisions
distributes multicast traffic over devices	distributes multicast traffic over devices

NEW QUESTION 402

- (Exam Topic 3)

Which command reverses the last commit without changing the index file or the working tree position?

- A. git revert HEAD
- B. git reset --hard HEAD~3
- C. git reset --soft HEAD^
- D. git revert

Answer: C

NEW QUESTION 403

- (Exam Topic 3)

What is a procedural component of CI/CD pipelines?

- A. Bundled artifacts must be generated.
- B. Every test must pass for the pipeline to continue its execution.
- C. Some tests fail without stopping the pipeline execution.
- D. The release label that identifies the build is optional.

Answer: B

Explanation:

In a CI/CD (Continuous Integration/Continuous Deployment) pipeline, a procedural component is a specific step or action that is carried out in a specific order as part of the pipeline process. One of the procedural components of a CI/CD pipeline is that every test must pass in order for the pipeline to continue its execution. If any test fails, the pipeline will stop and the issue must be addressed before the pipeline can continue. This is an important procedural component of a CI/CD pipeline because it ensures that the code being deployed is of high quality and meets the necessary standards before it is released.

NEW QUESTION 406

- (Exam Topic 3)

Drag and drop the code from the bottom onto the box where the code is missing to complete the error path scenario. Not all options are used.

```
import pytest
class Player:
    def __init__(self, name):
        self.name = name
        [redacted]
    def set_rating(self, rating):
        if rating or rating is int(0):
            [redacted]:
                raise ValueError('rating is invalid', rating)
            else:
                [redacted]
                return True
        else:
            return False
@pytest.fixture
def player():
    player = Player('User One')
    yield player
    del player
@pytest.mark.usefixtures('player')
class TestErrorPathSetRating:
    def test_add_higher_rating(self, player):
        with pytest.raises(ValueError):
            player.set_rating(101)
    def test_add_invalid_rating(self, player):
        with pytest.raises(ValueError):
            [redacted]
    def test_add_lower_rating(self, player):
        with pytest.raises(ValueError):
            player.set_rating(-1)
```

player.set_rating(0)	if rating != 0:
player.set_rating(85)	if rating or rating is int(0):
if rating < 1 or rating > 100:	self.rating = rating
self.rating = None	

- A. Mastered
B. Not Mastered

Answer: A

Explanation:

```
import pytest
class Player:
    def __init__(self, name):
        self.name = name
        self.rating = None
    def set_rating(self, rating):
        if rating or rating is int(0):
            if rating < 1 or rating > 100:
                raise ValueError('rating is invalid', rating)
            else:
                if rating != 0:
                    return True
        else:
            return False
@pytest.fixture
def player():
    player = Player('User One')
    yield player
    del player
@pytest.mark.usefixtures('player')
class TestErrorPathSetRating:
    def test_add_higher_rating(self, player):
        with pytest.raises(ValueError):
            player.set_rating(101)
    def test_add_invalid_rating(self, player):
        with pytest.raises(ValueError):
            player.set_rating(0)
    def test_add_lower_rating(self, player):
        with pytest.raises(ValueError):
            player.set_rating(-1)
```

player.set_rating(0)	if rating != 0:
player.set_rating(85)	if rating or rating is int(0):
if rating < 1 or rating > 100:	self.rating = rating
self.rating = None	

NEW QUESTION 409

- (Exam Topic 3)

```
HTTPS/1.1 201 Created
Date: Tue, 08 Nov 2020 09:37:27 GMT
Server: example-server
Location: https://example.com/restconf/data\
        example-jukebox/library/dogbreed=Australian%20Cattle%20Dog
Last Modified: Tue 08 Nov 2020 09:37:27 GMT
ETag: "s1878124t4c"
```

Refer to the exhibit. Which RESTCONF request results in this response?

- A.
- ```
GET /restconf/data/example-jukebox:jukebox/library HTTP/1.1
Host: example.com
Content-Type: application/yang-data-json

{
 "Example-jukebox:dogbreed" : [
 {
 "name" : "Australian Cattle Dog"
 }
]
}
```
- B.
- ```
CONFIG /restconf/data/example-jukebox:jukebox/library HTTP/1.1
Host: example.com
Content-Type: application/yang-data-json

{
  "Example-jukebox:dogbreed" : [
    {
      "name" : "Australian Cattle Dog"
    }
  ]
}
```
- C.
- ```
PUT /restconf/data/example-jukebox:jukebox/library HTTP/1.1
Host: example.com
Content-Type: application/yang-data-json

{
 "Example-jukebox:dogbreed" : [
 {
 "name" : "Australian Cattle Dog"
 }
]
}
```
- D.
- ```
POST /restconf/data/example-jukebox:jukebox/library HTTP/1.1
Host: example.com
Content-Type: application/yang-data+json

{
  "Example:dogbreed" : [
    {
      "name" : "Australian Cattle Dog"
    }
  ]
}
```

Answer: D

NEW QUESTION 411

- (Exam Topic 3)

A developer is attempting to retrieve all the messages from a Cisco Webex space. The server responds by sending the first 1,000 messages. The developer must make additional requests to retrieve the rest of the messages. Which API constraint is described in this scenario?

- A. payload limiting
- B. throttling
- C. pagination
- D. rate limiting

Answer: C

Explanation:

<https://developer.atlassian.com/server/confluence/pagination-in-the-rest-api/>

NEW QUESTION 413

- (Exam Topic 3)

A developer creates a program in which an object maintains a list of classes based on the observer pattern. The classes are dependent on the object. Whenever the state of the object changes, it notifies the dependent classes directly through callbacks. Which advantage of the observer pattern offers minimum dependencies and maximum flexibility between dependent objects or classes?

- A. tight coupling
- B. cohesion
- C. mediation
- D. loose coupling

Answer: D

NEW QUESTION 417

- (Exam Topic 3)

CISCO SECURITY APIS

Introduction

API Workflow

1.) Find all events where Malwar...

2.) Find Endpoint Details for Rem...

3.) Nuke the Endpoint to Prevent...

4.) Find samples in Threat Grid

5.) Get all sample domains to an...

6.) Check all domains against Inv...

7.) For suspect domains get mor...

8.) Enforce on bad Domains in U...

9.) Research other Ransomware ...

Generate Authentication Token ...

10.) Add custom intelligence Fee...

NGFW

Generate Authentication Token

Access Policies

Access Rules

Access Rule Details

New Access Rule in Policy

New Bulk Access Rule in Policy

Cisco Security APIs

The main goal of this collection to help the developer understand the various API capabilities of Cisco NG Malware Protection, Threat Grid, , ISE and Umbrella. It will cover useful API features for each of the prod properly use them. Simple workflow is also included in the collection to *Collect* all the characteristics/sign the possible attack using AMP. *Validate* the collected intelligence with Threat Grid and Umbrella. *Deploy* to the NGFW, Umbrella and ISE to protect and contain the threat.

API Workflow

GET 1.) Find all events where Malware Executed

https://:@amp.dcloud.cisco.com/v1/events?connector_guid[]=&event_type[]=1107296272

Get a listing of all the events for a specific computer when the quarantine failed

PARAMS

Refer to the exhibit. Drag and drop the code from the bottom onto the box where the code is missing to construct a Python script that calls a REST API request. Not all options are used.


```
import requests

[ ] = "https://fmc-hostname/api/fmc_tid/v1/domain//tid/source"

payload = {
    "name": "Threat Grid Ransomware DNS",
    "delivery": "url",
    "uri": "https://panacea.threatgrid.com/api/v3/feeds"+
    "/ransomware-dns 2017-12-08.stix?api_key=",
    "refresh": 1440,
    "version": "1.0.0",
    "params": {
        "selfSignedServerCertificate": "true",
        "hostnameVerifier": "allow_all"
    },
    "property": {
        "ttl": 90,
        "publish": true,
        "action": "monitor"
    }
}

headers = {
    'X-auth-access-token': 'access_token', ' [ ] ': 'application/json'
}

response = requests. [ ] ("POST", url,
    headers=headers, data = [ ] )
print(response.text.encode('utf8'))
```

url	Encoding	base_url	Content-Type	post
request	payload			

- A. Mastered
 B. Not Mastered

Answer: A

Explanation:

```
import requests

[ ] url = "https://fmc-hostname/api/fmc_tid/v1/domain//tid/source"

payload = {
    "name": "Threat Grid Ransomware DNS",
    "delivery": "url",
    "uri": "https://panacea.threatgrid.com/api/v3/feeds"+
    "/ransomware-dns 2017-12-08.stix?api_key=",
    "refresh": 1440,
    "version": "1.0.0",
    "params": {
        "selfSignedServerCertificate": "true",
        "hostnameVerifier": "allow_all"
    },
    "property": {
        "ttl": 90,
        "publish": true,
        "action": "monitor"
    }
}

headers = {
    'X-auth-access-token': 'access_token', ' [ ] Content-Type ': 'application/json'
}

response = requests. [ ] request ("POST", url,
    headers=headers, data = [ ] base_url )
print(response.text.encode('utf8'))
```

url	Encoding	base_url	Content-Type	post
request	payload			

NEW QUESTION 421

- (Exam Topic 3)

```

--- functions.py 2020-09-26 14:26:25.000000000 -0600
--- new.py 2020-09-26 14:26:10.000000000 -0600
@@ -21,7 +21,7 @@
def print_devices_info(devices):
    # Print id, hostname and management IP
    for item in devices:
-        print(item['id'], item['hostname'], item['managementIpAddress'])
-        print(item['id'], item['hostname'])

    # Get Authentication token
    def get_dnac_jwt_token():
@@ -66,9 +66,15 @@
    response = get_devices_list(headers, {})
    print_devices_info(response)

-    # print devices list filtered by hostname
-    print('\nPrinting device list filtered by hostname ...')
-    query_string_params = {'hostname': 'CSR1Kv-01.devnet.local'}
-    response = get_devices_list(headers, query_string_params)
-    print_devices_info(response)
-
-    # print devices list filtered by platform Id
-    print('\nPrinting device list filtered by platform id...')
-    query_string_params = {'platformId': 'C9500-40X'}
-    query_string_params = {'platformId': 'AIR-AP1141N-A-K9'}
    response = get_devices_list(headers, query_string_params)
    print_devices_info(response)

```

Refer to the exhibit. An engineer is comparing two files by using the unified diff format. Which code snippet belongs to the new.py file?

- A.

```
77 query_string_params = {'platformId':
'AIR-AP1141N-A-K9'}
```
- B.

```
21 print(item['id'], item['hostname'])
```
- C.

```
24 print(item['id'], item['hostname'],
item['managementIpAddress'])
```
- D.

```
66 # print devices list filtered by
hostname
67 print('\nPrinting device list
filtered by hostname ...')
68 query_string_params = {'hostname':
'CSR1Kv-01.devnet.local'}
69 response = get_devices_list
(headers, query_string_params)
70 print_devices_info(response)
```

Answer: A

NEW QUESTION 423

- (Exam Topic 3)

What is a firehose webhook?

- A. It collects data from third-party cloud APIs for custom applications.
- B. It enables an application to receive real-time data from Cisco Webex.
- C. It enables data to flow from the Cisco Webex API to a user's application.
- D. It sends a notification of any event for commonly used resources.

Answer: D

NEW QUESTION 428

- (Exam Topic 3)

/api/access/global/rules API operations on global access rules.

GET PUT PATCH **POST** DELETE

Implementation Notes

Add a new global access rule.

Parameters

Parameter	Required	Description	Type	Data Type
body	true	Definition of the global access rule to be added.	body	ExtendedACE

Response

Response Content Type

Response Object **ExtendedACE**

ExtendedACE Model

Field	Value	Description	Constraints
sourceAddress*	object	source address in the ace	None
destinationAddress*	object	destination address in the ace	None
kind*	string	The kind of this resource object.	None
dstSecurity	object	destination security group in the ace	None
dstSecurity. Value	string		None
active*	boolean	shows if the rule is active or inactive, default is active	None
destinationService*	object	destination service in the ace	None
permit*	boolean	shows if the action is permit or deny	None

Refer to the exhibit. Drag and drop the code from the bottom onto the box where the code is missing to complete the function that adds a new global access rule that denies traffic using the Cisco ASA REST API. Not all options are used.

```
import requests as req
def add rule(token, asa IP, dest v4Address):
    data = {
        "destinationAddress": {
            "kind": "IPv4Address",
            "value": dest v4Address
        },
        "destinationService": {
            "kind": "NetworkProtocol",
            "value": "ip"
        },
        
        "active": True,
        "sourceAddress": {
            "kind": "AnyIPAddress",
            "value": "any4"
        }
    }
    objectRequestUrl='https://' 
    res = req.request( 
                      json=data,verify=False)
    
    print("Success.")
else:
    print("Failed")
```

-
-
-
-
-


```

- hosts: nxos_rtr
  gather_facts: false
  tasks:
    - nxos_hsrp:
      group: "{{ item.group }}"
      vip: "{{ item.vip }}"
      priority: 115
      interface: "{{ item.interface }}"
      preempt: enabled
      auth_type: md5
      auth_string: "s3cuR3"
      version: 2
      host: "{{ hostvars['rtr-1a']['ansible_ssh_host'] }}"
      with_items:
        - "{{ hsrp_groups }}"
      delegate_to: "{{ hostvars['srv-1a']['ansible_ssh_host'] }}"

```

Refer to the exhibit. An engineer runs a network that consists of Cisco Nexus devices. The network is distributed between data centers in different locations. The switches are configured using standalone connections and a single point of failure. Which process is being automated by the Ansible playbook?

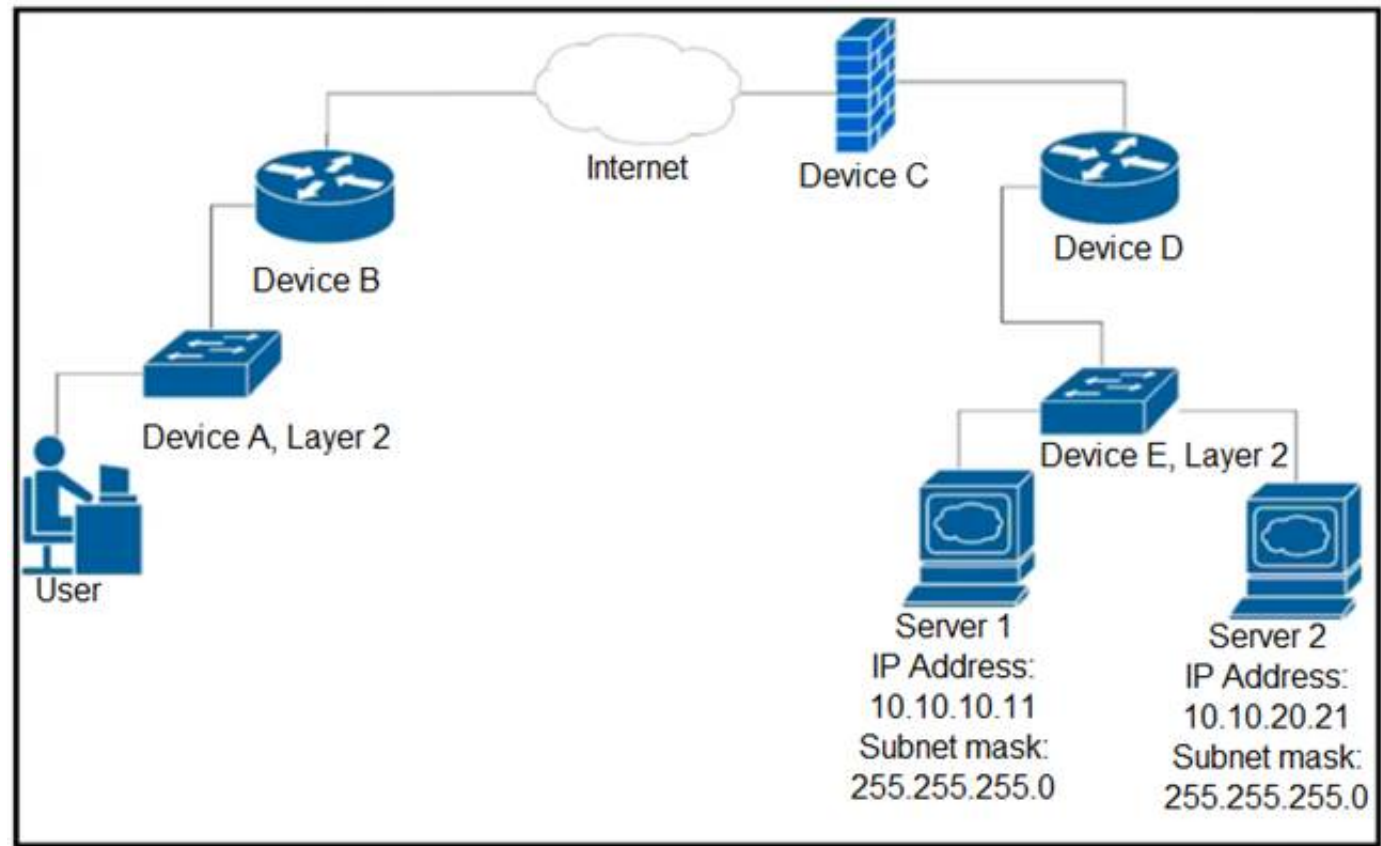
- A. enabling HSRP on the nxos_rtr inventory host
- B. enabling HSRP on the rtr-1a inventory host
- C. executing HSRP configuration from the Ansible controller node
- D. executing HSRP configuration from the srv-1a inventory host

Answer: B

NEW QUESTION 432

- (Exam Topic 3)

Refer to the exhibit.



Up to which device does the communication server 1 and server 2 go?

- A. device B
- B. device C
- C. device D
- D. device E

Answer: C

NEW QUESTION 437

- (Exam Topic 3)

Drag and drop the code from the bottom onto the box where the code is missing to obtain a list of network devices by using the Cisco Meraki API. Not all options are used.


```
import requests

url = "https://api.meraki.com/api/v0/ [ ] /{{networkId}}/ [ ] "

payload = {}
headers = {
    'Accept': '*/*'
}

response = requests.request("[ ]", url, headers=headers, data=payload)

print(response.text.[ ] ('utf8'))
```

teams

networks

devices

GET

POST

encrypt

encode

- A. Mastered
- B. Not Mastered

Answer: A

Explanation:

```
import requests

url = "https://api.meraki.com/api/v0/[ networks ]/{{networkId}}/[ devices ] "

payload = {}
headers = {
    'Accept': '*/*'
}

response = requests.request("[ GET ]", url, headers=headers, data=payload)

print(response.text.[ encode ] ('utf8'))
```

teams

networks

devices

GET

POST

encrypt

encode

NEW QUESTION 441

- (Exam Topic 3)

```
1 URL: https://example.com/restconf/data/Cisco-IOS-XE-native:native/logging/monitor
2 Method: POST
3
4 Headers: ('Content-type': 'application/yang-data+json', 'Accept': 'application/yang-data+json,
* application/yang-data.errors+json')
5
6 Body:
7
8 {
9     "severity": "alerts"
10 }
```

Refer to the exhibit. Which HTTP code is returned after the RESTCONF query is executed?

- A. 201
- B. 204
- C. 302
- D. 304

Answer: A

NEW QUESTION 445

- (Exam Topic 3)

Refer to the exhibit.

HTTP Request

```
curl http://hello-api.info -v
```

HTTP Response

```
* Trying hello-app.info...
* TCP_NODELAY set
* Connected to hello-app.info (hello-app.info) port 80 (#0)
> GET / HTTP/1.1
> Host:hello-app.info
> User-Agent: curl/7.64.1
> Accept: */*
>

< HTTP/1.1 502 Bad Gateway
< Server: nginx/1.14.0 (Ubuntu)
< Date: Sat, 21 Nov 2020 11:09:54 GMT
< Content-Type: text/html
< Content-Length: 182
< Connection: keep-alive
```

A developer cannot reach the web application behind an NGINX load balancer. The developer sends a request to an application FQDN with cURL but gets an HTTP 502 response. Which action solves the problem?

- A. Fix errors in the server configuration, which is behind the load balancer.
- B. Bring up the load balancer to the active state.
- C. Fix errors in the cURL request sent by the client.
- D. Change the default gateway on the load balancer to an active one.

Answer: A

Explanation:

The HyperText Transfer Protocol (HTTP) 502 Bad Gateway server error response code indicates that the server, while acting as a gateway or proxy, received an invalid response from the upstream server.

<https://developer.mozilla.org/en-US/docs/Web/HTTP/Status/502#:~:text=The%20HyperText%20Transfer%20P>

NEW QUESTION 449

- (Exam Topic 3)

What is a function of the default gateway in a network?

- A. to drop traffic that is destined to the default gateway
- B. to forward traffic to different subnets
- C. to forward traffic to the same subnet
- D. to drop traffic that is not destined to the default gateway

Answer: B

NEW QUESTION 451

- (Exam Topic 3)

Refer to the exhibit.

```
import requests

base url = f"https://webexapis.com/v1/people"

headers = {
    "Accept": "application/json"
}

person_email = 'customer@company.com'
url = f"{base url}?email={person_email}"

response = requests.request("GET", url, headers=headers)

if response.status_code == 200 :
    print(f"OK - Added {person_email}")
else:
    print(f"ERROR CODE {response.status_code}")
```

A collaboration engineer has developed a script to automate the gathering of information by providing the email address of the individual. When the engineer tests the script, a 401 error is received. Which command fixes the script?

- A. Add "Authorization": "Bearer <WEBEX_TOKEN>" to the headers
- B. Add "Authentication": "Basic <WEBEX_TOKEN>" in the base_url after "https://".
- C. Add "<Authorization>:<password>@" in the base_url after "https://".
- D. Add "Authentication": "Bearer <WEBEX_TOKEN>" to the headers

Answer: A

NEW QUESTION 452

- (Exam Topic 3)

Which platform has an API that has the capability to obtain a list of vulnerable software on user devices?

- A. Cisco Advanced Malware Protection
- B. Cisco Umbrella
- C. Cisco Identity Services Engine
- D. Cisco Firepower

Answer: A

NEW QUESTION 454

- (Exam Topic 3)

A development team is creating an application used for contactless payments. The application must: Be web-based Capture and process the credit card information for a purchase.

Which security action must the web application use to gather and process the private customer data?

- A. Enable RATs to monitor the web application remotely.
- B. Disable botnets to eliminate risks.
- C. Disable TLS to increase the connection speed.
- D. Enable the encryption of network traffic.

Answer: D

NEW QUESTION 458

- (Exam Topic 3)

```
1  import requests
2  def main():
3      def getCreds():
4          user = input('User: ')
5          pwd = Getpass('Pass: ')
6          return (user,pwd)
7
8      def login(ipaddr,user,pwd):
9          url = "https://{ipaddr}/api/aaaLogin.json".format(ipaddr=ipaddr)
10         data = '{"aaaUser":{"attributes":{"name":"%(user)s","pwd":"%(pwd)s"}}}'
11             % ("pwd":pwd,"user":user)
12         response = requests.post(url,data=data,verify=False)
13         cookie = response.headers['Set-Cookie']
14         return cookie
15
16     def getstuff(ipaddr,cookie):
17         headers = {"Cookie":cookie}
18         url = "https://{ipaddr}/api/node/class/fvTenant.json".format(ipaddr=ipaddr)
19         response = requests.get(url,headers=headers,verify=False)
20         grouplist = []
21         for x in response.json()["imdata"]:
22             grouplist.append(x["fvTenant"]["attributes"]["name"])
23         return ','.join(grouplist)
24
25     ipaddr = "192.168.255.2"
26     user,pwd = getCreds()
27     token = login(ipaddr,user,pwd)
28     return getstuff(ipaddr,cookie)
29
30 if __name__ == '__main__':
31     result = main()
32     print(result)
```

Refer to the exhibit. Which action does the script perform?

- A. It queries user credentials from Cisco IOS XE devices.
- B. It retrieves device identification from Cisco DNA Center.
- C. It exports SSID information from Meraki dashboard.
- D. It collects group information from ACI.

Answer: D

NEW QUESTION 462

- (Exam Topic 3)

Which port does HTTPS use by default?

- A. 433
- B. 443
- C. 803
- D. 883

Answer: B

NEW QUESTION 464

- (Exam Topic 3)

Refer to the exhibit.

```
module ietf-interface {
  namespace "urn:ietf:params:xml:ns:yang:ietf-interfaces";
  prefix if;
  import ietf-yang-types {
    prefix yang;
  }
  container interfaces-state {
    list interface {
      key "name";
      leaf name {
        type string;
      }
      leaf admin-status {
        type enumeration {
          enum up {
            value 1;
          }
          enum down {
            value 2;
          }
          enum testing {
            value 3;
          }
        }
      }
      leaf if-index {
        type int32 {
          range "1..2147483647"
        }
      }
      container statistics {
        leaf in-octets {
          type yang:counter64;
        }
        leaf in-unicast-pkts {
          type yang:counter64;
        }
      }
    }
  }
}
```

Which XML snippet has interface information that conforms to the YANG model?

A. Text Description automatically generatedB.

```
<interfaces-state
xmlns="urn:ietf:params:xml:ns:yang:ietf-interfaces"
xmlns:if="urn:ietf:params:xml:ns:yang:ietf-interfaces">
  <interface name="GigabitEthernet1">
    <admin-status>1</admin-status>
    <if-index>1</if-index>
    <statistics>
      <in-octets>408164820</in-octets>
      <in-unicast-pkts>728061</in-unicast-pkts>
    </statistics>
  </interface>
</interfaces-state>
```

Text

Description automatically generated


```
<interfaces-state
xmlns="urn:ietf:params:xml:ns:yang:ietf-interfaces"
xmlns:if="urn:ietf:params:xml:ns:yang:ietf-interfaces">
  <interface>
    <name>GigabitEthernet1</name>
    <admin-status>up</admin-status>
    <if-index>1</if-index>
    <in-octets>408164820</in-octets>
    <in-unicast-pkts>728061</in-unicast-pkts>
  </interface>
</interfaces-state>
```

B. Text Description automatically generated

```
<interfaces-state
xmlns="urn:ietf:params:xml:ns:yang:ietf-interfaces"
xmlns:if="urn:ietf:params:xml:ns:yang:ietf-interfaces">
  <interface>
    <name>GigabitEthernet1</name>
    <admin-status>up</admin-status>
    <if-index>1</if-index>
    <statistics>
      <in-octets>408164820</in-octets>
      <in-unicast-pkts>728061</in-unicast-pkts>
    </statistics>
  </interface>
</interfaces-state>
```

C. Text Description automatically generated

```
<interfaces-state
xmlns="urn:ietf:params:xml:ns:yang:ietf-interfaces"
xmlns:if="urn:ietf:params:xml:ns:yang:ietf-interfaces">
  <interface>
    <name>GigabitEthernet1</name>
    <admin-status>1</admin-status>>
    <if-index>1</if-index>
    <statistics>
      <in-octets>408164820</in-octets>
      <in-unicast-pkts>728061</in-unicast-pkts>
    </statistics>
  </interface>
</interfaces-state>
```

Answer: C

Explanation:

<https://datatracker.ietf.org/doc/id/draft-ietf-netmod-interfaces-cfg-01.txt> <admin-status>up</admin-status>

NEW QUESTION 466

- (Exam Topic 3)

What are two benefits of using classes over functions when writing applications? (Choose two.)

- A. improved readability
- B. increased compatibility
- C. variable reusability
- D. increased performance
- E. code organization

Answer: AC

NEW QUESTION 467

- (Exam Topic 3)

```
import requests
from requests.auth import HTTPBasicAuth

user= "user"
password= "PASSWORD"

token=requests.post('https://<DNAC ADRESS>/dna/system/api/v1/auth/token',
)
```

Refer to the exhibit. A developer must use a token to collect data from Cisco DNA Center API and prepares a Python script to send requests. Which line of code needs to be placed on the snippet where the code is missing to obtain a token from the Cisco DNA Center API?

- A. token=BasicAuth('user','password')
- B. auth=BasicAuth('user','password')
- C. auth=HTTPBasicAuth(user,password)
- D. token=HTTPBasicAuth(user,password)

Answer: C

NEW QUESTION 470

- (Exam Topic 3)

Object Lookup

Use the `MoDirectory.lookupByDn` to look up an object within the MIT object tree by its distinguished name (DN). This example looks for an object called 'uni':

```
uniMo = moDir.lookupByDn('uni')
```

A successful lookup operation returns a reference to the object that has the specified DN.

You can also look up an object by class. This example returns a list of all objects of the class 'polUni':

```
uniMo = moDir.lookupByClass('polUni')
```

You can add a filter to a lookup to find specific objects. This example returns an object of class 'fvTenant' whose name is 'Tenant1':

```
tenant1Mo = moDir.lookupByClass("fvTenant", propFilter='and(eq(fvTenant.name, "Tenant1"))')
```

Refer to the exhibit. Drag and drop the code from the bottom onto the box where the code is missing to add a subnet to each bridge domain in the Ten1 tenant. Not all options are used.

```
from cobra.model import fv
from cobra.mit.request import ClassQuery, DnQuery
import cobra.mit.access
import cobra.mit.session

tenname = "Ten1"
ls = cobra.mit.session.LoginSession(
    'https://10.100.1.200', "admin", "Lab123!3")

aci = cobra.mit.access.MoDirectory(ls)
aci.login()
c = cobra.mit.request.ConfigRequest()

qry1 =  (f'uni/tn-{tenname}')
fvTenant = aci.query(qry1)[0]

qry2 =  ("fvBD")
qry2.propFilter = f'and(wcard(fvBD.dn,"{fvTenant.dn}"))'
fvBDs = aci.query(qry2)

i=0
for fvBD in fvBDs:
    fvsubnet = cobra.model.fv.Subnet(, ip=f'10.114.{i}.1/24')
    c.addMo(fvBD)
    aci.  (c)
    i+=
```

fvBD

fvTenant

ClassQuery

bdname

DnQuery

ClassName

commit

- A. Mastered
- B. Not Mastered

Answer: A

Explanation:

```
from cobra.model import fv
from cobra.mit.request import ClassQuery, DnQuery
import cobra.mit.access
import cobra.mit.session

tenname = "Ten1"
ls = cobra.mit.session.LoginSession(
    'https://10.100.1.200', "admin", "Lab123!3")

aci = cobra.mit.access.MoDirectory(ls)
aci.login()
c = cobra.mit.request.ConfigRequest()

qry1 = DnQuery (f'uni/tn-{tenname}')
fvTenant = aci.query(qry1)[0]

qry2 = ClassQuery ("fvBD")
qry2.propFilter = f'and(wcard(fvBD.dn,"{fvTenant.dn}"))'
fvBDs = aci.query(qry2)

i=0
for fvBD in fvBDs:
    fvsubnet = cobra.model.fv.Subnet( fvBD , ip=f'10.114.{i}.1/24')
    c.addMo(fvBD)
    aci. commit (c)
    i+=1
```

fvBD

fvTenant

ClassQuery

bdname

DnQuery

ClassName

commit

NEW QUESTION 473

- (Exam Topic 3)

What is a benefit of a distributed version control system?

- A. encourages users to commit small pieces of work to the system more frequently
- B. ensures that all code meets minimum standards before being committed to the system
- C. allows users to work on the codebase even when not connected to the Internet
- D. ensures that all code is tested before being committed to the system

Answer: C

Explanation:

Reference: <https://about.gitlab.com/topics/version-control/benefits-distributed-version-control-system/>

NEW QUESTION 478

- (Exam Topic 2)

What is a benefit of a model-driven approach for infrastructure automation?

- A. enforces the generation of all automation scripts through the modeling environment
- B. provides a small learning curve and helps system administrators with limited coding experience
- C. ensures that system administrators gain a good understanding of coding and expand their experience and capabilities
- D. enables a user to understand a declarative language to translate the model into an actionable script

Answer: A

NEW QUESTION 480

- (Exam Topic 2)

Drag and drop the code snippets from the bottom to the blanks in the code to test the API response through the Python unittest library. Not all options are used.


```
import unittest
import json
from apidogs import app

class TestsAPIDogs(unittest.TestCase):

    def setUp(self):
        self.app = app.test_client()

    # Check status response of API
    def test_status(self):
        resp =self.app.get('/dogs/all')
        status_code = response.
        self.assertEqual(status_code, )

    # Check for content type is in application/json
    def test_content_type(self):
        resp =self.app.get('/dogs/all')
        self.assertEqual(resp. , 'application/json')

    def test_item_not_exist(self):
        resp =self.app.get('/dogs?id= ')
        self.assertEqual(response.status_code,404)
```

none	content	
status_code	200	content_type
403	status	

- A. Mastered
B. Not Mastered

Answer: A

Explanation:

Graphical user interface, text Description automatically generated

NEW QUESTION 481

- (Exam Topic 3)

`get_interface_info_by_id(device_id, headers=None, **request_parameters)` [\[source\]](#)

Returns list of interfaces by specified device.

Parameters

- `device_id` (*basestring*) – Device ID.
- `headers` (*dict*) – Dictionary of HTTP Headers to send with the Request .
- `**request_parameters` – Additional request parameters (provides support for parameters that may be added in the future).

Returns

JSON response. Access the object's properties by using the dot notation or the bracket notation.

Return type

`MyDict`

Raises

- `TypeError` – If the parameter types are incorrect.
- `MalformedRequest` – If the request body created is invalid.
- `ApiError` – If the DNA Center cloud returns an error.

Refer to the exhibit. Drag and drop the code from the bottom onto the box where the code is missing to return the number of interfaces on a network device by using the Cisco DNA Center SDK. Not all options are used.


```
from dnacentersdk import DNACenterAPI
base_url = 'https://10.9.11.226'

[ ] = 'da4606c3-63ad-4ed4-8f35-6bfec7c2df04'

dnac = [ ](username='cisco', password='secret',
          base_url=base_url, version='1.3.3', verify=False)

[ ] = [item['portName'] for item in
      dnac.[ ].get_interface_info_by_id(device_id)['response']]

# Check the number of ports on the device
print(f'The list of interfaces contains {len(port_list)} items.')

# Output
# The list of interfaces contains 54 items.
```

router_id

device_id

DNACenterAPI

DNAC

port_list

routers

devices

- A. Mastered
B. Not Mastered

Answer: A

Explanation:

```
from dnacentersdk import DNACenterAPI
base_url = 'https://10.9.11.226'
device_id = 'da4606c3-63ad-4ed4-8f35-6bfec7c2df04'

dnac = DNACenterAPI(username='cisco', password='secret',
                    base_url=base_url, version='1.3.3', verify=False)

port_list = [item['portName'] for item in
             dnac.devices.get_interface_info_by_id(device_id)['response']]

# Check the number of ports on the device
print(f'The list of interfaces contains {len(port_list)} items.')

# Output
# The list of interfaces contains 54 items.
```

router_id

device_id

DNACenterAPI

DNAC

port_list

routers

devices

NEW QUESTION 484

- (Exam Topic 3)

A developer pushes an application to production. The application receives a webhook over HTTPS without a secret. The webhook information contains credentials to service in cleartext. When the information is received, it is stored in the database with an SHA-256 hash. Credentials to the database are accessed at runtime through the use of a vault service. While troubleshooting, the developer sets the logging to debug to view the message from the webhook. What is the security issue in this scenario?

- A. Database credentials should be accessed by using environment variables defined at runtime.
B. During the transport of webhook messages, the credentials could be unencrypted and leaked.
C. During logging, debugging should be disabled for the webhook message.
D. Hashing the credentials in the database is not secure enough; the credentials should be encrypted.

Answer: B

NEW QUESTION 489

- (Exam Topic 3)

A developer has addressed a bug that was found in the production code of an application. A separate file named 'bug427896191v_fix" has been created with the changes to the code. Which Git command must be used to incorporate the bug fix into the production code?

- A. git rebase
B. git cat-file
C. git merge-file
D. git bisect

Answer: C

NEW QUESTION 493

- (Exam Topic 3)

Which two commands download and execute an Apache web server container in Docker with a port binding 8080 in the container to 80 on the host? (Choose two.)

- A. docker pull apache
- B. docker run -p 8080:80 httpd
- C. docker run -p 80:8080 httpd
- D. docker pull httpd
- E. docker pull https

Answer: CD

NEW QUESTION 496

- (Exam Topic 3)

Which function does a router provide to a network?

- A. broadcast domain segmentation
- B. unique host on a Layer 3 network
- C. unique hardware address for every node on a LAN
- D. broadcast domain extension

Answer: B

NEW QUESTION 498

- (Exam Topic 3)

A developer completed the creation of a script using Git. Before delivering it to the customer, the developer wants to be sure about all untracked files, without losing any information. Which command gathers this information?

- A. git clean -n
- B. git rm -f
- C. git clean -r
- D. git rm *

Answer: A

NEW QUESTION 502

- (Exam Topic 3)

A customer's cloud services must:

Migrate services to another data center on demand. Save the operational state of the machine on demand. Support Windows and Linux GUIs.

Maximize hardware utilization.

Which type of deployment meets these requirements?

- A. bare metal
- B. container
- C. virtual machine
- D. Kubernetes

Answer: C

NEW QUESTION 505

- (Exam Topic 3)

What is a benefit of version control?

- A. prevents two users from working on the same file
- B. keeps track of all changes to the files
- C. prevents the sharing of files
- D. keeps the list of data types used in the files

Answer: B

NEW QUESTION 506

- (Exam Topic 3)

What is a benefit of using a code review process in application development?

- A. accelerates the deployment of new features in an existing application
- B. provides version control during code development
- C. enables the quick deployment of new code
- D. eliminates common mistakes during development

Answer: D

NEW QUESTION 509

- (Exam Topic 3)

Which Python function is used to parse a string that contains JSON data into a Python dictionary?

- A. json.dumps()

- B. json.to_json()
- C. json.parse()
- D. json.loads()

Answer: D

Explanation:

loads() function is present in python built-in 'json' module. This function is used to parse the JSON string.

NEW QUESTION 513

- (Exam Topic 3)

Drag and drop the steps from the left into order on the right to create a common CI/CD pipeline process. Not all options are used.

Build	step 1
Commit	step 2
Deploy	step 3
Evaluate	step 4
Test	
Regress	

- A. Mastered
- B. Not Mastered

Answer: A

Explanation:

Build	Commit
Commit	Build
Deploy	Test
Evaluate	Deploy
Test	
Regress	

NEW QUESTION 514

- (Exam Topic 3)

A company wants to automate the orders processed on its website using API. The network device that supports the solution must:

- support XML encoding
- support distributed transactions
- support YANG data models
- be support software redundancy

Which requirement prevents the use of RESTCONF for the solution?

- A. software redundancy
- B. YANG data models
- C. distributed transactions
- D. XML encoding

Answer: C

NEW QUESTION 519

- (Exam Topic 3)

What is a benefit of a CI/CD pipeline for infrastructure?

- A. removes manual errors
- B. enables manual steps
- C. removes the need for operations
- D. provides variety for deployments

Answer: A

NEW QUESTION 521

- (Exam Topic 3)

A developer plans to deploy a new application that will use an API to implement automated data collection from Webex with these requirements:

The application was created by using the request library. Requires HTTP basic authentication.

Provides data in JSON or XML formats.

Which Cisco DevNet resource helps the developer with how to use the API?

- A. DevNet sandbox
- B. API documentation
- C. forums
- D. DevNet code exchange

Answer: B

NEW QUESTION 525

- (Exam Topic 3)

Which traffic is handled on the control plane?

- A. BGP
- B. SMB
- C. NTP
- D. NETCONF

Answer: A

NEW QUESTION 529

- (Exam Topic 3)

What is a benefit of using model-driven programmability for infrastructure automation?

- A. connected user tracking
- B. infrastructure resource optimization
- C. multiple device control protocols
- D. device performance monitoring

Answer: C

NEW QUESTION 533

- (Exam Topic 3)

Which two details are captured from the subnet mask? (Choose two.)

- A. portion of an IP address that refers to the subnet
- B. default gateway of the host
- C. unique number ID assigned to the host
- D. part of an IP address that refers to the host
- E. network connection of a host or interface

Answer: AD

NEW QUESTION 535

- (Exam Topic 3)

An engineer needs to collect information about 20,000 Bluetooth clients using the Cisco Meraki API. The API returns only 1,000 results. One of the HTTP response headers has the data:

Link: [https://api.meraki.com/info/api/v0/networks/ABC/bluetoothClients?perPage=1000&startingAfter=1000>;rel="n](https://api.meraki.com/info/api/v0/networks/ABC/bluetoothClients?perPage=1000&startingAfter=1000>;rel=n)

Which RFC is implemented by the API to apply the restriction?

- A. RFC 5988 – Web Linking
- B. RFC 5890 – Response Constraints
- C. RFC 5005 – Feed Paging and Archiving
- D. RFC 5446 – Content Limits

Answer: C

NEW QUESTION 538

- (Exam Topic 3)

Which protocol runs over TCP port 830?

- A. NETCONF
- B. Telnet
- C. RESTCONF
- D. HTTP

Answer: A

NEW QUESTION 539

- (Exam Topic 3)

Which HTTP error code series relates to redirection?

- A. 400
- B. 500
- C. 200
- D. 300

Answer: D

Explanation:

1xx - Informational: The server has received the request and is continuing the process

2xx - Successful: The request was successful and the browser has received the expected information 3xx (Redirection): You have been redirected and the completion of the request requires further action

4xx (Client Error): The website or the page could not be reached, either the page is unavailable or the request contains bad syntax

5xx (Server Error): While the request appears to be valid, the server could not complete the request

NEW QUESTION 541

- (Exam Topic 3)

What are two benefits of implementing common data structures when working with APIs in remote systems? (Choose two.)

- A. ensures that developers are limited to using one data schema type
- B. prevents multivendor interoperability
- C. improves security in RESTful web services
- D. enforces standardized data structures
- E. leverages code that is easily managed and reused

Answer: BE

NEW QUESTION 543

- (Exam Topic 3)

Refer to the exhibit.

```
cd ~/development/project01
mkdir info
cd info
[REDACTED]
cp ./requirements.txt ~/Documents/backup/requirements.txt
```

A developer just finished testing a Python script and wants to save the list of packages and versions installed on the current machine. The developer must make sure that it will not cause any issues if tested on another device due to different library versions. Which line of code needs to be placed on the snippet where the code is missing?

- A. pip freeze 2> requirements.txt
- B. pip freeze > requirements.txt
- C. pip freeze => requirements.txt
- D. pip freeze | requirements.txt

Answer: B

Explanation:

pip freeze requirements.txt ile ilgili görsel sonucu The most common command is pip freeze > requirements.txt , which records an environment's current package list into requirements.txt. If you want to install the dependencies in a virtual environment, create and activate that environment first, then use the Install from requirements.

NEW QUESTION 544

- (Exam Topic 3)

An engineer deploys a Cisco CSR 1000 V instance to a virtual machine. The engineer must output the device configuration in JSON format. Which protocol is used for this task?

- A. YANG
- B. NETCONF
- C. SNMP
- D. RESTCONF

Answer: D

NEW QUESTION 547

- (Exam Topic 3)

A company requires a new platform to store large volumes of log data that is generated in their assembly plant. The platform must be scalable, so the underlying technology must provide a path for fast deployment of new nodes for data and indexing? The data contains sensitive information, so specialist encryption tools must be used to secure the data. Which application deployment model meets the requirements?

- A. edge
- B. private cloud
- C. public cloud

D. hybrid cloud

Answer: D

Explanation:

A hybrid cloud combines the benefits of both a private cloud, which offers the ability to store sensitive data in a secure, dedicated environment, and a public cloud, which offers the ability to scale quickly and easily by deploying new nodes as needed. With a hybrid cloud deployment, you could use specialist encryption tools to secure the sensitive data in the private cloud, and then take advantage of the scalability and flexibility of the public cloud to handle the large volumes of log data.

NEW QUESTION 549

.....

Relate Links

100% Pass Your 200-901 Exam with ExamBible Prep Materials

<https://www.exambible.com/200-901-exam/>

Contact us

We are proud of our high-quality customer service, which serves you around the clock 24/7.

Viste - <https://www.exambible.com/>