

UiPath

Exam Questions UiPath-ADAv1

UiPath Automation Developer Associate v1 Exam



NEW QUESTION 1

Consider testing a workflow that computes the sum of two numbers having the data driven test data from the Excel file below:

Number1	Number2	Sum
1	2	3
2	2	4
5	4	9

Expanding the functionality of the workflow to compute the sum of three numbers, the data needs to be updated as well to accommodate the new scenario:

Number1	Number2	Number3	Sum
1	2	2	5
2	2	3	7
5	4	1	10

What are steps to do that?

- A. Click Right on the Test Case and select Update Test Data.
- B. Click Right on the Test Case and select Add Test Data.
- C. Click Right on the Test Case and select Remove Test Data.
- D. Click Right on the Test Case and select Refresh Test Data.

Answer: A

Explanation:

To update the data to accommodate the new scenario, you need to modify the Excel file that contains the test data and then refresh the test case to reflect the changes. The steps are as follows:

? Open the Excel file that has the test data for the workflow. It should have four columns: Number1, Number2, Sum, and Result.

? Add a new column after Number2 and name it Number3. This column will store the third number for the sum operation.

? Update the existing rows in the Excel file to include a value for Number3 and adjust the value of Sum accordingly. For example, if Number1 is 1, Number2 is 2, and Number3 is 3, then Sum should be 6.

? Save and close the Excel file.

? In UiPath Studio, right click on the test case that uses the Excel file as the test data source and select Update Test Data. This will open a window where you can edit the test data settings.

? In the Update Test Data window, make sure that the Excel file path is correct and that the sheet name is selected. You can also change the name and description of the test data if you want.

? Click OK to save the changes and close the window.

? Right click on the test case again and select Refresh Test Data. This will reload the test data from the Excel file and update the test case accordingly.

You have successfully updated the test data to compute the sum of three numbers instead of two. You can now run or debug your test case with data variations1.

NEW QUESTION 2

What is a pre-requisite for running InitAllApplications TestCase?

- A. Invoke CloseAllApplications XAML file in Given.
- B. Invoke KillAllProcesses XAML file in Given.
- C. Invoke InitAllSettings XAML file in Given.
- D. Invoke SetTransactionStatus XAML file in Given.

Answer: C

Explanation:

The InitAllApplications TestCase is used to test the initialization of all the applications that are required for the automation process1. The pre-requisite for running this TestCase is to invoke the InitAllSettings XAML file in the Given section of the TestCase2. The InitAllSettings file is responsible for reading the configuration data from the Config.xlsx file and storing it in a dictionary variable3. This data is then used by the InitAllApplications file to open and log in to the applications using the credentials and URLs from the dictionary variable4.

NEW QUESTION 3

What is the output type returned when using a Get Test Data Queue Item activity?

- A. Dictionary
- B. Dictionary
- C. Object
- D. QueueItem

Answer: A

Explanation:

The Get Test Data Queue Item activity is used to retrieve a test data queue item from Orchestrator and store it in a variable. The output type of the variable is Dictionary, which means that it is a collection of key-value pairs that can be accessed by using the key name. For example, if the test data queue item contains the fields Name, Age, and Gender, then the output variable can be used to get the values of these fields by using expressions like outputVar("Name"), outputVar("Age"), or outputVar("Gender"). (UiPath Studio documentation1)

References:

? 1: Get Test Data Queue Item - UiPath Activities.

NEW QUESTION 4

DRAG DROP

A developer finished creating an automation project in UiPath Studio 2021.10. What is the recommended sequence of steps that should be performed to publish the package to Orchestrator 2021.10?

Instructions: Drag the Description found on the left and drop on the correct Step found on the right.

Description	Step Sequence
Select an Orchestrator feed as the "Publish to" location and then click the "Publish" button	Step 1
Navigate to the Design Ribbon and then click the "Publish" button	Step 2
Validate that the "Info" dialog box displays and shows the package version number	Step 3
Add the Release Notes and ensure the version is incremented	Step 4

- A. Mastered
- B. Not Mastered

Answer: A

Explanation:

The recommended sequence of steps that should be performed to publish the package to Orchestrator 2021.10 is:

- ? Step 1 = Navigate to the Design Ribbon and then click the "Publish" button
- ? Step 2 = Select an Orchestrator feed as the "Publish to" location and then click the "Publish" button
- ? Step 3 = Add the Release Notes and ensure the version is incremented
- ? Step 4 = Validate that the "Info" dialog box displays and shows the package version number

This sequence will ensure that the developer can publish the automation project to the Orchestrator feed of their choice, add some notes about the changes made, and verify that the package is successfully published with the correct version number. <https://docs.uipath.com/orchestrator/standalone/2021.10/user-guide/about-packages>

NEW QUESTION 5

Where in the REFramework template project is the "SetTransactionStatus.xaml" invoked?

- A. In the Finally section of the Try Catch activity in the Process Transaction state.
- B. In the Try section of the Try Catch activity in the End Process state.
- C. In the Try and Catches sections of the Try Catch activity in the Process Transaction state.
- D. In the Catches section of the Try Catch activity in the Process Transaction state.

Answer: A

Explanation:

The SetTransactionStatus.xaml file is invoked in the Finally section of the Try Catch activity in the Process Transaction state of the REFramework template project. This file is responsible for setting the status of the current transaction item based on the outcome of the process. It also closes all applications that are used by the process and logs relevant information. (UiPath Studio - REFramework - UiPath Academy)

References:

- ? Studio - REFramework - UiPath Documentation Portal
- ? UiPath Studio - REFramework - UiPath Academy
- ? REFramework documentation.pdf - Google Drive

NEW QUESTION 6

What happens to existing project dependencies in UiPath Studio when converting a Windows-Legacy project to Windows?

- A. Project dependencies are updated to the highest available version.
- B. Project dependencies are completely removed.
- C. Project dependencies remain unchanged.
- D. Project dependencies are marked as unresolved.

Answer: A

Explanation:

When converting a Windows-Legacy project to Windows, the project dependencies are automatically updated to the highest available version that is compatible with the Windows target framework. This is done to ensure that the project can use the latest features and improvements of the activities packages, as well as to avoid potential issues or conflicts with the legacy versions. The updated dependencies are reflected in the project.json file and the Manage Packages window of the project. The developer can also manually update the dependencies to a specific version if needed.

References:

- ? Deprecation of the Windows-Legacy Compatibility - UiPath Studio
- ? Convert Windows Project to Windows-Legacy - UiPath Community Forum

NEW QUESTION 7

A developer is automating the process of entering sensitive information into text input fields that are constantly changing their position. Each text input field has a corresponding text label. The developer decides to automate the process by using Modern UI Activities with anchors. Which activities should be used?

- A. Find Text Position activity as the anchor and Type Secure Text activity as the action.
- B. Type Into activity with a valid anchor and the input text provided in the Secure Text property.
- C. Find Text Position activity as the anchor and Set Text activity as the action.
- D. Type Into activity with a valid anchor and the input text provided in the Text property.

Answer: A

Explanation:

The Find Text Position activity is used to find the position of a text on the screen and return it as a UiElement variable. This can be used as an anchor to locate the text input field that corresponds to the text label. The Type Secure Text activity is used to type a password or other sensitive information into a UI element, without revealing the actual text. The input text is provided as a SecureString variable, which is encrypted and cannot be viewed in plain text. This ensures that the sensitive information is entered securely and accurately into the text input field.

References:

? Find Text Position - UiPath Activities

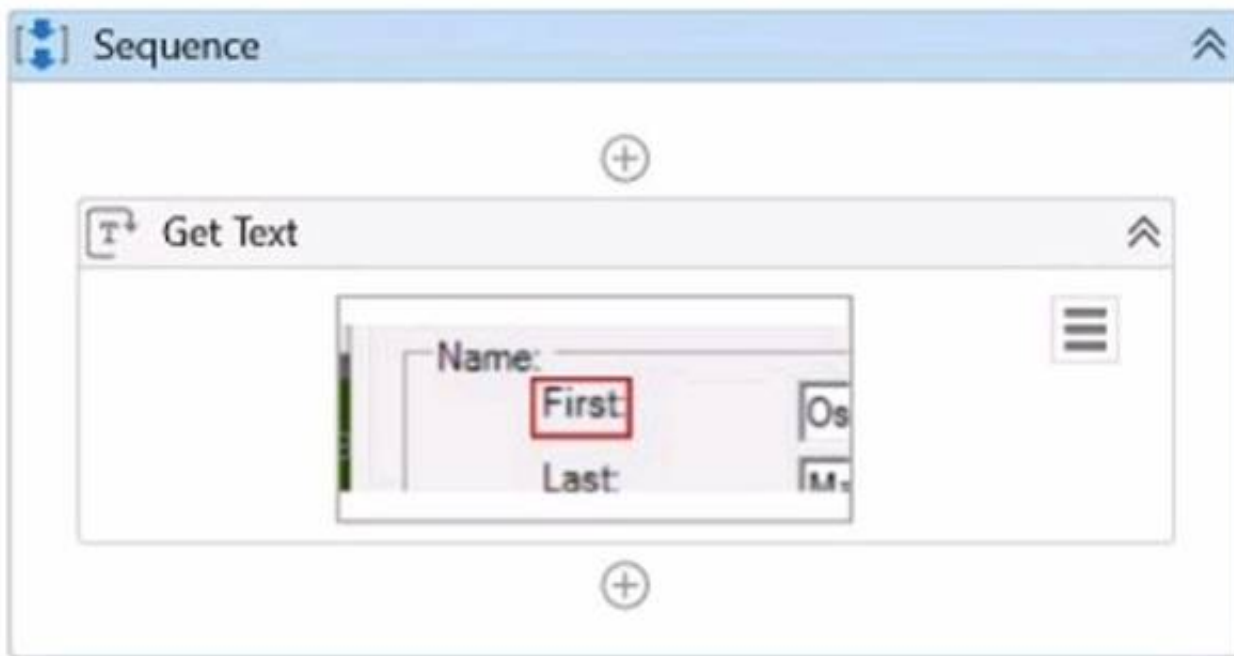
? Type Secure Text - UiPath Activities

? UiPath Anchor Base Tutorial & AnchorPosition Example

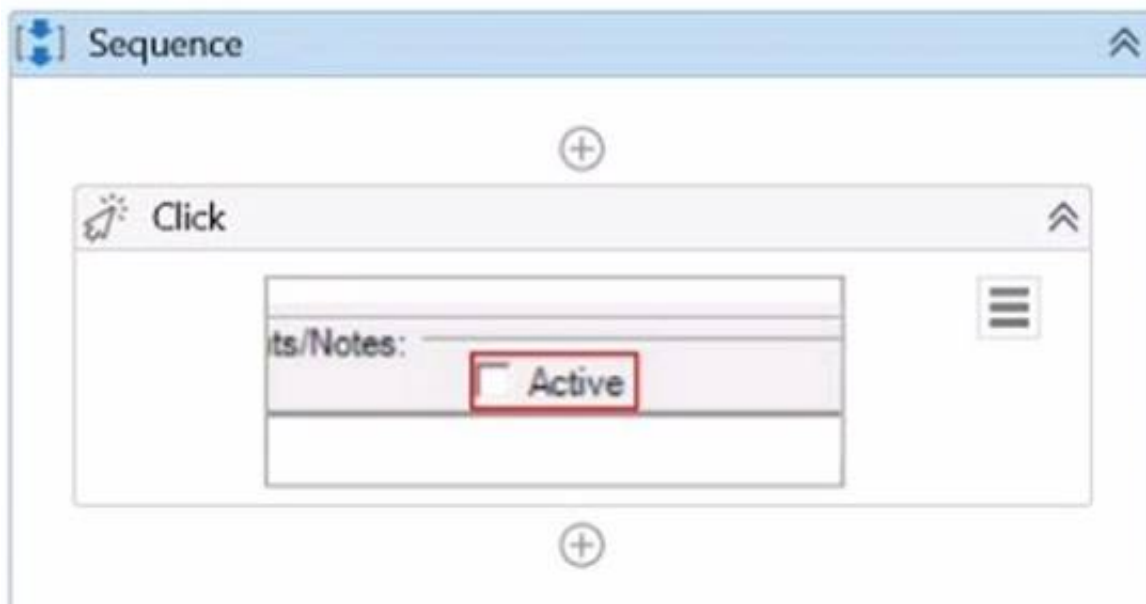
NEW QUESTION 8

What represents a sequence that contains an activity with a partial selector?

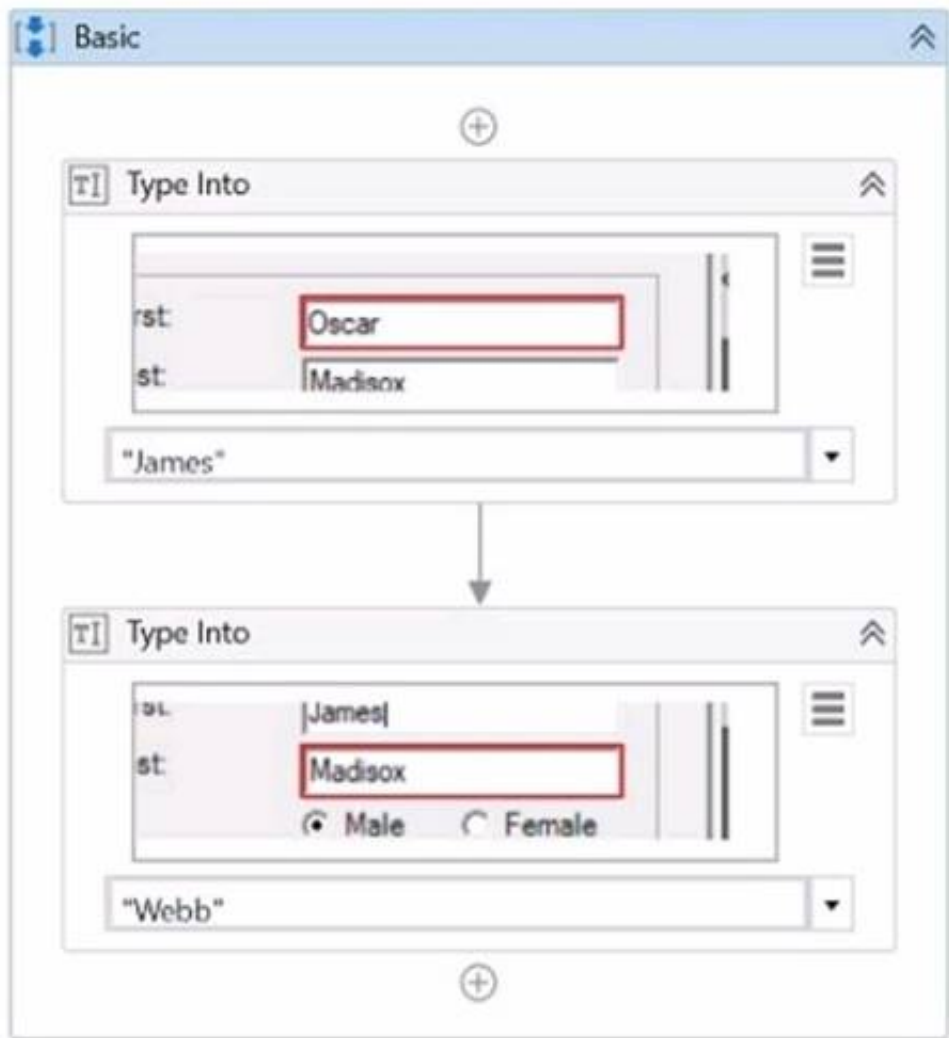
A)



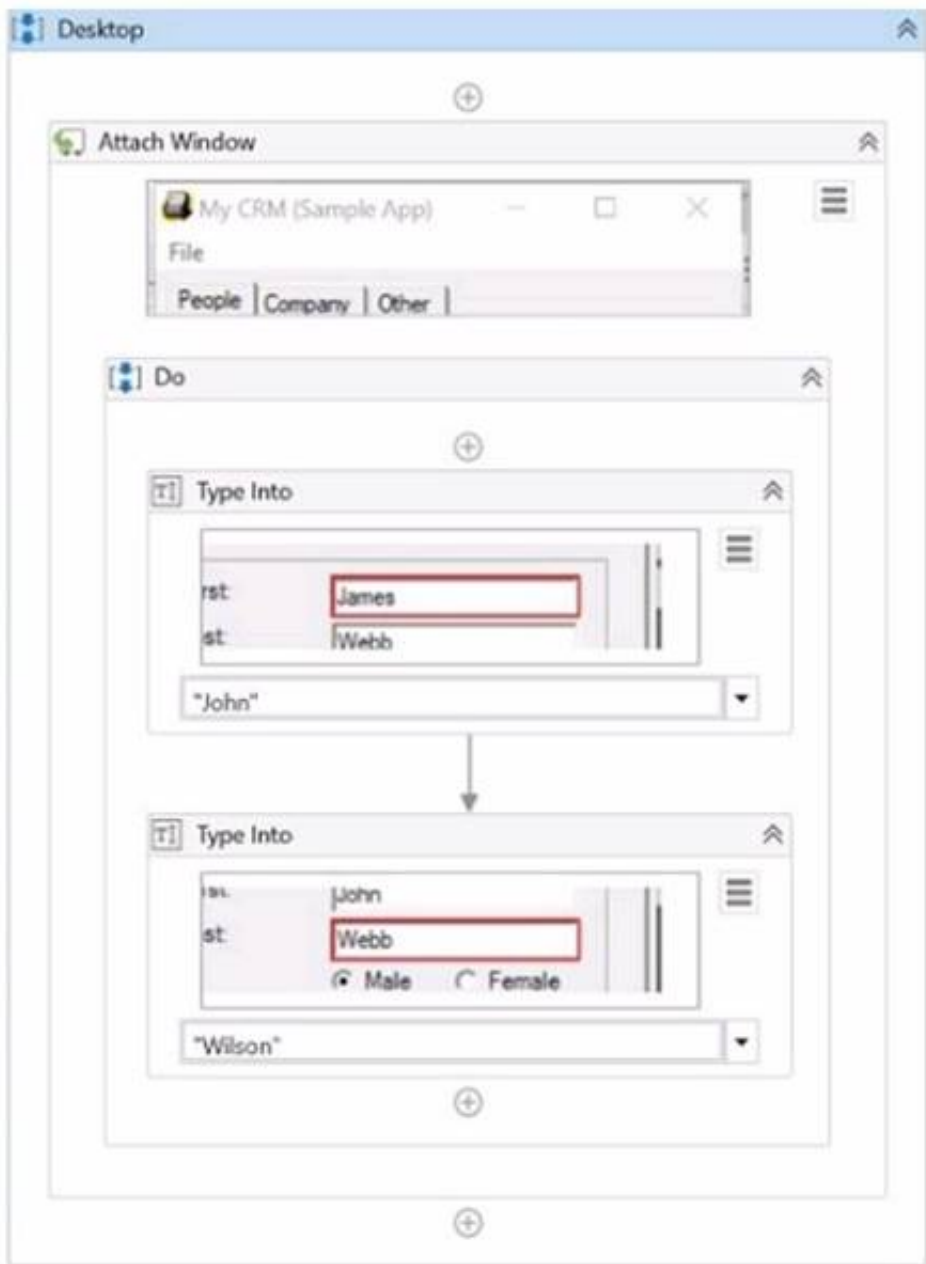
B)



C)



D)



- A. Option A
- B. Option B
- C. Option C
- D. Option D

Answer: B

Explanation:

A partial selector is a selector that does not contain the information about the top-level window. A partial selector is usually generated when a UI Automation activity is included in a container activity, such as Attach Browser or Attach Window, that has a full selector of the outer window. This way, the UI Automation activity can use the partial selector relative to the container, instead of the full selector from the root. A partial selector is indicated by the icon in the Properties panel of the UI Automation activity. In this question, the sequence that contains an activity with a partial selector is Option B, where the Click activity has the partial

selector icon and is enclosed in an Attach Window activity. The other options have activities with full selectors, indicated by the icon . Therefore, the answer is B.
Option B.

References: Full Versus Partial Selectors, Selectors

NEW QUESTION 9

Which of the following workflow names is correct, based on best practices?

- A. Transactionstatus
- B. Workflow1
- C. creation_of_file
- D. ScrapeFilteredStocks

Answer: D

Explanation:

The correct workflow name, based on best practices, is ScrapeFilteredStocks. This is because it follows the Pascal Case convention, which means that the first letter of each word is capitalized and there are no spaces or underscores between the words. This convention makes the workflow name easy to read and understand, as well as consistent with the UiPath standards. The other workflow names are incorrect because they either use lower case, snake case, or have no meaningful description. For example, Transactionstatus should be TransactionStatus, Workflow1 should be more descriptive, and creation_of_file should be CreationOfFile.

References:

? Naming Rules and Best Practices - Studio - UiPath Community Forum

? Workflow Design - UiPath Studio

NEW QUESTION 10

How does UiPath Integration Service benefit automation developers?

- A. By standardizing authorization and authentication, managing API connections, and enabling faster integration into SaaS platforms.
- B. By offering a comprehensive, unified platform dedicated solely to UI automation, enabling seamless integration with third-party applications.
- C. By enabling developers to create custom UI elements for applications without using APIs.
- D. By substituting the requirement for API automation with UI automation capabilities, delivering a more manageable and user-friendly approach, allowing users to streamline their processes efficiently and effectively facilitating a more rapid integration process.

Answer: A

Explanation:

The UiPath Integration Service is a new feature that seamlessly combines world-class UI and API automation, allowing both capabilities to be centrally accessed within the same integration design environment¹². This empowers developers to flexibly capture all their automation opportunities, even allowing them to deploy both types of integrations within a single automation¹². The UiPath Integration Service also provides the following benefits for automation developers¹²:

? By standardizing authorization and authentication, it simplifies the security

protocols for connecting to different systems and applications, such as Salesforce, SAP, or Google G Suite².

? By managing API connections, it enables developers to create, modify, reuse, and share connections to multiple systems using pre-built connectors or custom connectors².

? By enabling faster integration into SaaS platforms, it allows developers to leverage server-side event triggers to start automations based on data updates, insertions, or deletions in external applications².

References:

? Introducing UiPath Integration Service | UiPath.

? New UiPath Integration Service | UiPath.

NEW QUESTION 10

When installing UiPath Studio, which of the following actions require administrator privileges?

- A. Administrator privileges are not required for installing UiPath Studio.
- B. Administrator privileges are required for installing the robot in both service mode and user mode.
- C. Administrator privileges are required for installing the robot in user mode.
- D. Administrator privileges are required for installing the robot in service mode.

Answer: D

NEW QUESTION 14

A developer is using a Global Exception Handler as an error handling mechanism for a project. By default, how many times does a Global Exception Handler retry an activity that continually throws an error?

- A. 2
- B. 3
- C. 4
- D. 5

Answer: B

Explanation:

The Global Exception Handler is an error handling mechanism for a project. By default, it retries an activity that continually throws an error 3 times. The Global Exception Handler is a workflow that is executed when an exception occurs in the project. It allows the developer to define custom actions for handling different types of exceptions, such as logging, retrying, aborting, or continuing the execution¹. When the Global Exception Handler encounters an exception, it logs the name of the activity which faulted and starts retrying the activity three times. If it encounters the same exception each time and the number of retries reaches 3, the execution is aborted at the level of the activity which threw the exception². The number of retries can be modified by changing the value of the RetryCount variable in the Global Exception Handler workflow³. References: Global Exception Handler and Global Handler for Exceptions from UiPath documentation and Marketplace.

NEW QUESTION 17

In the context of the REFramework, if the OrchestratorQueueName key is present in both the Settings and Assets sheets, but an asset with the corresponding name is not present in Orchestrator, what will be the behavior at run time?

- A. The flow will throw an exception in InitAllSettings workflow.
- B. The flow will use the value from the Settings sheets since the asset is missing.
- C. An empty string will be saved for the "OrchestratorQueueName" key in the config dictionary.
- D. The "OrchestratorQueueName" key is not added to the config dictionary and the flow will throw in Get Transaction Data workflow.

Answer: B

Explanation:

The REFramework template is a robust and scalable framework for building RPA projects¹. It uses a config file to store the settings and constants that are used throughout the project². The config file has two sheets: Settings and Assets. The Settings sheet contains the key-value pairs that are read by the InitAllSettings workflow and stored in the config dictionary. The Assets sheet contains the names of the assets that are stored in Orchestrator and need to be retrieved by the InitAllApplications workflow. The OrchestratorQueueName key is used to specify the name of the queue that is used to store the transaction items for the process. If the OrchestratorQueueName key is present in both the Settings and Assets sheets, but an asset with the corresponding name is not present in Orchestrator, the behavior at run time will be as follows:

? The InitAllSettings workflow will read the value of the OrchestratorQueueName key from the Settings sheet and store it in the config dictionary.

? The InitAllApplications workflow will try to retrieve the asset with the name OrchestratorQueueName from Orchestrator using the Get Asset activity. Since the asset does not exist, the activity will throw an exception.

? The exception will be caught by a Try Catch block and handled by a Log Message activity with level Warning and message "Asset not found: OrchestratorQueueName".

? The flow will continue with the next asset in the Assets sheet or move to the next state if there are no more assets.

? The flow will use the value of the OrchestratorQueueName key from the config dictionary whenever it needs to access or update the queue.

Therefore, option B is correct. Option A is incorrect because the exception is thrown in InitAllApplications workflow, not InitAllSettings workflow. Option C is incorrect because an empty string is not saved for the OrchestratorQueueName key in the config dictionary. Option D is incorrect because the OrchestratorQueueName key is added to the config dictionary and the flow does not throw in Get Transaction Data workflow.

References:

? How to Use Enhanced REFramework to Implement UiPath Projects article from UiPath

? Config.xlsx documentation from UiPath

? [InitAllSettings.xaml] documentation from UiPath

? [InitAllApplications.xaml] documentation from UiPath

? [TransactionItem Variable] documentation from UiPath

NEW QUESTION 22

In a UiPath REFramework project, what is the primary purpose of using Custom Log Fields?

- A. To add specific contextual information to log messages that are relevant to the automation process.
- B. To generate extra variables alongside log messages, enhancing workflow understanding.
- C. To maintain contextual insights within log messages, including secure details like credentials.
- D. To modify the representation of logged contextual data as it is displayed in the Orchestrator.

Answer: A

Explanation:

The Add Log Fields activity allows developers to create custom log fields that are added to the Robot Execution Logs. These custom log fields can be used to store and display additional information that is relevant to the automation process, such as transaction ID, invoice number, customer name, etc. The custom log fields can help to improve the traceability and analysis of the automation process, as well as to filter and group the logs based on specific criteria. (UiPath Automation Developer study guide)

References:

? Add Log Fields

? Logging and Log Levels

NEW QUESTION 24

What are the three main components of UiPath Integration Service?

- A. Connectors, API Tokens, Triggers.
- B. Connectors, Connections, Orchestrator.
- C. Connectors, Connections, Triggers.
- D. Activities, Connections, Triggers.

Answer: C

Explanation:

UiPath Integration Service is a feature that enables you to integrate UI and API automation in a unified way. The three main components of UiPath Integration Service are:

? Connectors: These are pre-built or custom components that provide access to various applications or systems through their APIs. You can use connectors to perform actions or retrieve data from different sources, such as Salesforce, Slack, Google Sheets, etc. (UiPath Integration Service documentation¹)

? Connections: These are configurations that store the authentication and connection details for each connector. You can create and manage connections in the UiPath Automation Cloud and share them across different folders and processes. (UiPath Integration Service documentation²)

? Triggers: These are rules that define when and how to start a process in Orchestrator based on events from connectors. You can configure triggers to react to data changes, insertions, deletions, or custom events in the connected applications or systems. (UiPath Integration Service documentation³)

References:

? 1: Integration Service - Connectors - UiPath Documentation Portal.

? 2: Integration Service - Connections - UiPath Documentation Portal.

? 3: Integration Service - Triggers - UiPath Documentation Portal.

NEW QUESTION 25

What is the purpose of the Interval filter in the Orchestrator's Monitoring page?

- A. It allows you to control the granularity of the displayed data and check the health of your system in either the last day or the last hour.
- B. It allows you to allocate licenses per machine for the displayed data.
- C. It allows you to choose between background and foreground processes for the displayed data.
- D. It enables you to sort the displayed data based on job priorities.

Answer: A

Explanation:

The Interval filter in the Orchestrator's Monitoring page lets you select the time range for the data that is displayed on the dashboard¹. You can choose between Last Day and Last Hour options to view the performance and health indicators of your system at different levels of detail².

References:

? Monitoring documentation, Interval Filter section

? UiPath Orchestrator Monitoring video, 2:10 - 2:30

NEW QUESTION 26

A developer is building a process that needs to click an element which requires a mouse hover to become visible. However, the element does not appear with the default click setting. The input method for the Click activity is Send Window Message

Which property should the developer configure to be able to click the element?

- A. The developer should change the input method to Hardware Events and the CursorMotionType to Smooth.
- B. The property AlterIfDisabled should be set to True.
- C. The developer should change the input method to Simulate and the CursorMotionType to Instant.
- D. The property AlterIfDisabled should be set to False.

Answer: A

Explanation:

The input method for the Click activity determines how the click is performed on the target element. The Send Window Message input method is fast and reliable, but it does not support hovering over elements. Therefore, the developer should use the Hardware Events input method, which simulates the real mouse and keyboard actions. The CursorMotionType property specifies how the cursor moves to the target element. The Smooth option makes the cursor move in a natural way, which can trigger the hover effect on the element. (UiPath Studio documentation¹²)

References:

? 1: Input Methods - UiPath Studio.

? 2: Click - UiPath Activities.

NEW QUESTION 29

When is the Anchor Base activity used to automate interaction with an application?

- A. When the element selector is reliable but the element's position on the screen changes
- B. When all the element selectors in the application are reliable
- C. When no element selectors are available in the automated application
- D. When the element selector is not reliable and the element's position on the screen changes

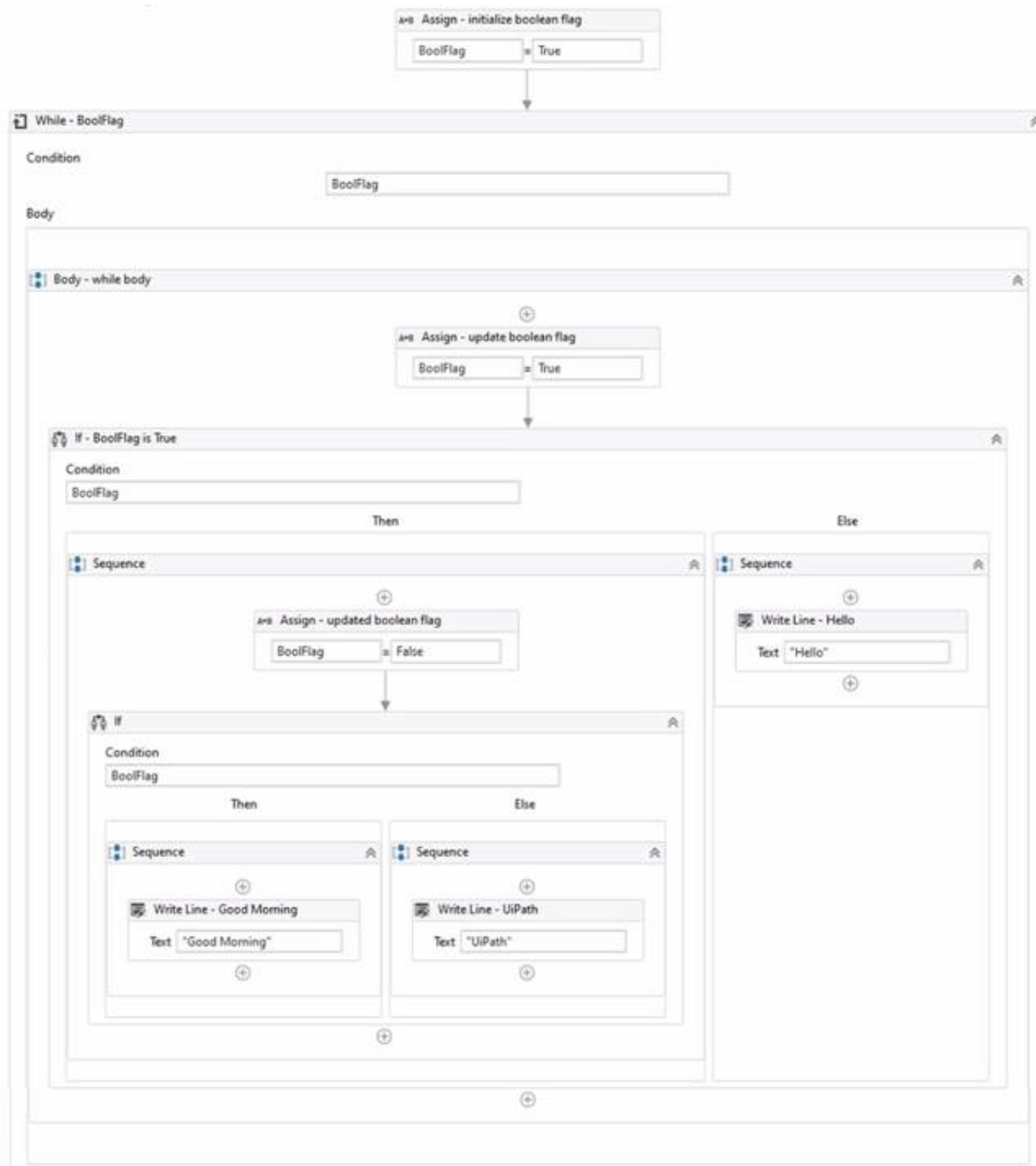
Answer: D

Explanation:

The Anchor Base activity is used to automate interaction with an application when the element selector is not reliable and the element's position on the screen changes. The Anchor Base activity consists of two parts: an anchor and an action. The anchor is a UI element that has a reliable selector and a fixed position relative to the target element. The action is the activity that performs the desired operation on the target element. The Anchor Base activity uses the anchor to locate the target element based on its relative position (left, right, top, bottom) and then executes the action on it. This way, the automation can handle dynamic and complex UI elements that have unreliable selectors or change their position on the screen. References: Anchor Base and Example for Anchor Base Activity from UiPath documentation and forum.

NEW QUESTION 31

Review the following exhibit.



Based on the exhibit, which output is produced in the Output panel?

- A. Hello
- B. Good Morning UiPath
- C. Good Morning
- D. UiPath

Answer: C

Explanation:

Based on the exhibit, the output produced in the Output panel is “Good Morning”. This is because the “If” activity checks if the “BoolFlag” variable is True. If it is True, the “Then” branch is executed, which contains a “Write Line” activity with the text “Good Morning”. If the “BoolFlag” variable is False, the “Else” branch is executed, which contains a “Write Line” activity with the text “UiPath”. Since the “BoolFlag” variable is assigned to True in the previous “Assign” activity, the condition of the “If” activity is satisfied, and the “Then” branch is executed. Therefore, the “Write Line” activity writes “Good Morning” to the Output panel.

References: If and How to put a if condition in assign activity? from UiPath documentation and forum.

NEW QUESTION 36

A developer designed an automation to use an Asset value from Orchestrator using the Get Asset activity. The value represents email addresses of the process owners which may change.

Which Asset Type should be used?

- A. Bool
- B. Credential
- C. Text
- D. Integer

Answer: C

Explanation:

The Asset Type that should be used for storing email addresses of the process owners is Text. Text assets are used to store only string values, such as names, addresses, URLs, etc. Text assets can be easily retrieved and updated using the Get Asset and Set Asset activities in UiPath Studio. Text assets are suitable for storing email addresses, as they can contain alphanumeric characters, symbols, and special characters. Text assets can also be used in various activities that require string input or output, such as Send Email, Write Line, Assign, etc.

References: About Assets and Assets in UiPath Orchestrator and their usage in project from UiPath documentation and RPA Learners.

NEW QUESTION 40

In a UiPath project that uses State Machines, under what circumstances should the Final State activity be used in the project?

- A. When initiating the first state of a state machine.
- B. When marking the successful completion or termination of a state machine's execution.
- C. When a particular state contains complex conditional logic.
- D. When an intermediary state has multiple possible transitions.

Answer: B

Explanation:

The Final State activity is used to indicate the end of a state machine's execution, either successfully or with an error¹. The Final State activity has only one section, Entry, where you can add activities to perform before exiting the state machine². You can have more than one Final State in a state machine, but you can only create one Initial State³. The Final State activity should be used when you want to mark the completion or termination of a state machine's execution, not when initiating the first state, handling complex logic, or having multiple transitions.

<https://docs.uipath.com/activities/other/latest/workflow/final-state>

NEW QUESTION 41

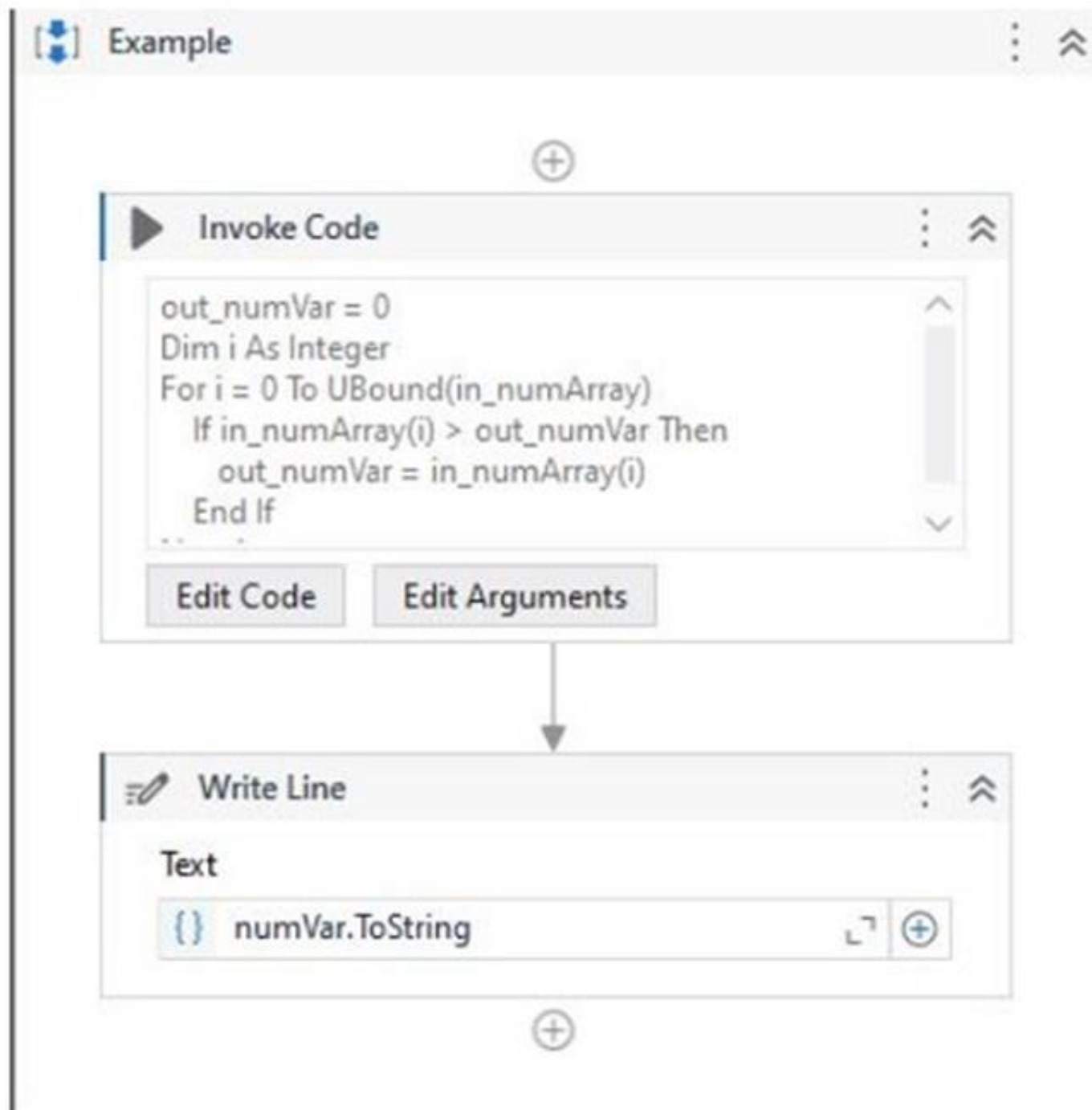
Given the following list of arguments:

Invoked code arguments			
Name	Direction	Type	Value
in_numArray	In	Int32[]	{2,5,1,7,9,4,8}
out_numVar	Out	Int32	numVar
Create Argument			

And the following code:

```
VB.Net Code
1 out_numVar = 0
2 Dim i As Integer
3 For i = 0 To in_numArray.Length-1
4     If in_numArray(i) > out_numVar Then
5         out_numVar = in_numArray(i)
6     End If
7 Next i
```

What is the value that will be displayed in the Output Panel at the end of the sequence below:



- A. 1
- B. 2
- C. 7
- D. 9

Answer: D

Explanation:

The code in the Invoke Code activity is looping through an array of integers and checking if the current value is greater than the previous value. If it is, the current value is stored in the output variable. Since the last value in the array is 9, this will be the final value of the output variable. (UiPath Studio - Invoke Code - UiPath Academy)

References:

? Studio - Invoke Code - UiPath Documentation Portal

? UiPath Studio - Invoke Code - UiPath Academy

NEW QUESTION 46

A developer is building a process that types data into input fields using the Hardware Events input method. Which property of the Type Into activity should be modified to reduce the pace at which the input string characters are typed into the fields?

- A. Delay before
- B. Alter disabled element
- C. Delay between keys
- D. Delay after

Answer: C

Explanation:

The Delay between keys property of the Type Into activity specifies the time (in milliseconds) between each keystroke when using the Hardware Events input method. Increasing this value can slow down the typing speed and reduce the risk of missing or skipping characters. (UiPath Automation Developer study guide)

References:

? Type Into

? Input Methods

NEW QUESTION 49

A developer is building an automation that must interact with a destination remote computer reached by jumping through multiple RDP connections, as described by the following scenario:

- The Robot is installed on Machine A, which connects through RDP to Machine B.

- From Machine B another RDP connection is opened to Machine C, where the automation must be performed.
 Which of the following scenarios is appropriate for the developer who wants to use UI Automation activities?

- A. UI Automation can be used and the following are prerequisites: Machine A - install RDP extension.Machine B - no requirement.Machine C - install RemoteRuntime.msi.
- B. UI Automation can be used and the following are prerequisites: Machine A - no requirement.Machine B - no requirement.Machine C - install RemoteRuntime.msi.
- C. UI Automation can be used and the following are prerequisites: Machine A - install RDP extension.Machine B - install RDP extension and RemoteRuntime.ms
- D. Machine C - install RemoteRuntime.msi.
- E. UI Automation can be used and the following are prerequisites: Machine A - install RDP extension.Machine B - install RemoteRuntime.ms
- F. Machine C - install RemoteRuntime.msi.

Answer: C

Explanation:

UI Automation is a feature that enables you to automate the interaction with UI elements on remote machines using native selectors. To use UI Automation in a scenario where multiple RDP connections are involved, you need to install the UiPath Windows Remote Desktop extension on the client machines and the UiPath Remote Runtime component on the destination machine. The extension allows you to identify UI elements on the remote desktop and send keyboard and mouse events to them. The Remote Runtime component enables the communication between the extension and the UiPath Robot service. In this case, Machine A and Machine B are client machines, while Machine C is the destination machine. Therefore, you need to install the RDP extension on Machine A and Machine B, and the Remote Runtime component on Machine C. (UiPath Studio documentation¹) References:
 ? 1: About Native RDP Automation - UiPath Studio.

NEW QUESTION 54

During which stage does an automation developer have the least contribution and responsibility?

- A. In the Discovery and Kickoff, Process Analysis, and Solution Design stages.
- B. In the Development and Unit Testing, Integration and UAT, and Deployment and Hypercare stages.
- C. In the Solution Design, Development and Unit Testing, and Deployment and Hypercare stages.
- D. In the Discovery and Kickoff, Development and Unit Testing, and Deployment and Hypercare stages.

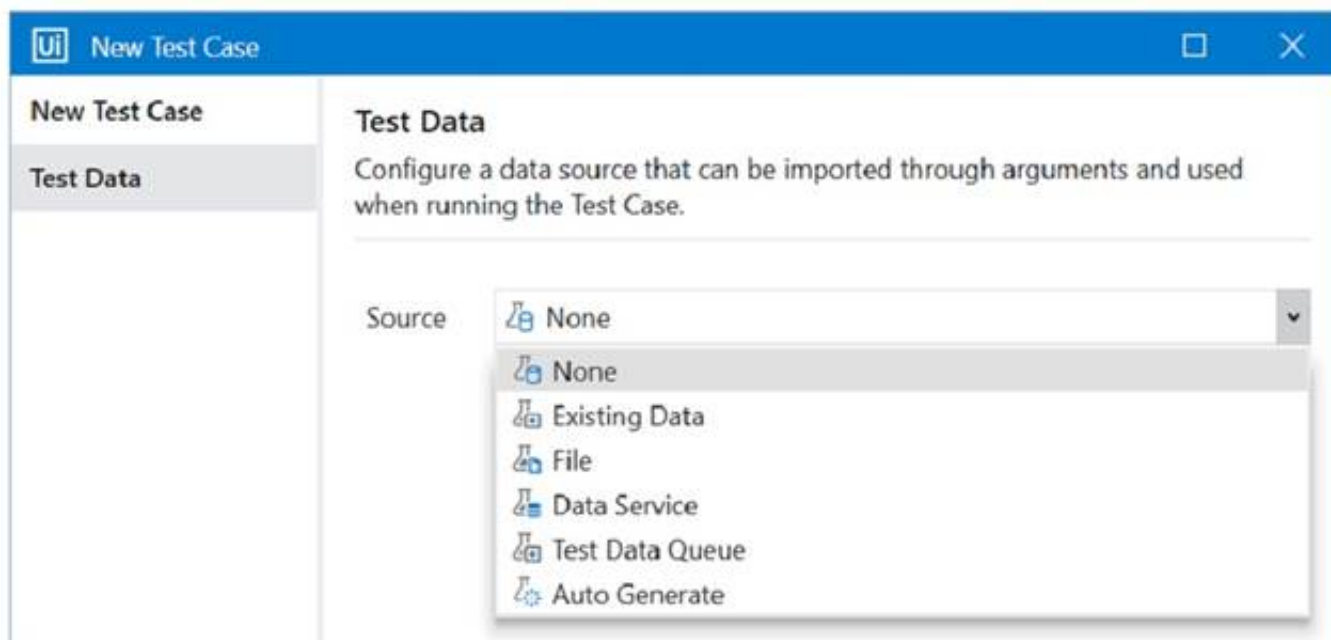
Answer: A

Explanation:

According to the UiPath Automation Implementation Methodology, the automation lifecycle consists of six stages: Discovery and Kickoff, Process Analysis, Solution Design, Development and Unit Testing, Integration and UAT, and Deployment and Hypercare. The automation developer has the least contribution and responsibility in the first three stages, as they are mainly focused on identifying, analyzing, and designing the automation solution. The automation developer's role is more prominent in the last three stages, as they are responsible for developing, testing, deploying, and monitoring the automation projects and components. References: Automation Lifecycle - Standalone, Automation Developer

NEW QUESTION 58

When creating a new test case, which option restricts dynamic data update in UiPath Orchestrator once the test case is published?



- A. Data Service
- B. File
- C. Test Data Queue
- D. Data Service with Filter

Answer: B

Explanation:

When creating a new test case in UiPath Orchestrator, you can choose a source for the test data that can be imported through arguments and used when running the test case¹. The source can be one of the following options: None, Existing Data, File, Data Service, or Test Data Queue². The option that restricts dynamic data update once the test case is published is File. This option allows you to upload a file (such as Excel or JSON) that contains the test data². However, once the file is uploaded, you cannot modify or replace it without republishing the test case³. Therefore, the test data is static and cannot be updated dynamically. The other options allow dynamic data update in different ways. For example, Data Service allows you to use an existing table from Data Service as the test data source and filter it by using a SQL query². You can update the table in Data Service and the changes will be reflected in the test case without republishing it⁴. References: Test Cases documentation, New Test Case window description, Updating the test data sets forum post, Data Service documentation.

NEW QUESTION 59

When should the Show Elements button be used in the Computer Vision wizard?

- A. Highlighting all UI elements that have been identified by the Computer Vision analysis.
- B. Displaying a list of all available UI elements and their properties.
- C. Activating a real-time view of the target app's UI during automation.
- D. Filtering out specific UI elements from being processed by the Computer Vision engine.

Answer: A

Explanation:

The Show Elements button in the Computer Vision wizard is used to toggle the highlighting of all UI elements that have been detected by the Computer Vision engine on the target application. This helps to visualize the accuracy and scope of the UI element recognition and to select the desired UI element for automation. (UiPath Automation Developer study guide)

References:

? Computer Vision

? Computer Vision Wizard

NEW QUESTION 63

What actions must be manually selected in the App/Web Recorder before recording a step?

- A. Copy text using the Get Text activity. Hover over an element using the Hover activit
- B. Highlight an element using the Highlight activity.
- C. Copy text using the Get Text activity. Hover over an element using the Hover activity. Click on buttons, links, and other clickable elements such as icons or image
- D. Type text in a text area such as a text box. Select or clear a check box.
- E. Select or clear a check box. Send keyboard shortcuts using your keyboar
- F. Select an item from a drop-down.
- G. Click on buttons, links, and other clickable elements such as icons or image
- H. Type text in a text area such as a text box. Select or clear a check box. Send keyboard shortcuts using your keyboar
- I. Select an item from a drop-down.

Answer: A

Explanation:

The App/Web Recorder is a tool that allows you to record your actions on an application or a web browser and generate activities automatically¹. The App/Web Recorder has a toolbar that contains different actions that you can select before recording a step². Some of these actions are:

? Click: This action records a click on a button, link, or any other clickable element.

? Type: This action records typing text in a text box or any other text area.

? Check: This action records selecting or clearing a check box.

? Send Hotkey: This action records sending keyboard shortcuts using your keyboard.

? Select Item: This action records selecting an item from a drop-down list or any other selector.

These actions are automatically detected and recorded by the App/Web Recorder when you perform them on the application or web browser³. However, there are some actions that are not automatically detected and recorded by the App/Web Recorder, and you need to manually select them from the toolbar before recording a step. These actions are:

? Get Text: This action records copying text from a label, paragraph, or any other text element.

? Hover: This action records hovering over an element with your mouse cursor.

? Highlight: This action records highlighting an element with a colored border. These actions are useful for extracting data, triggering events, or identifying elements on the application or web browser⁴. To use these actions, you need to select them from the toolbar and then indicate the element on the screen that you want to apply them to⁵.

Therefore, option A is the correct answer, as it lists the actions that must be manually selected in the App/Web Recorder before recording a step. Option B includes some actions that are automatically detected and recorded by the App/Web Recorder, such as Click and Type. Option C also includes some actions that are automatically detected and recorded by the App/Web Recorder, such as Check and Send Hotkey. Option D includes all the actions that are automatically detected and recorded by the App/Web Recorder.

NEW QUESTION 68

A developer created a process that performs the following tasks 1 Prompts the user for an input company name 2. Opens a browser and searches for the company name 3. Scrapes the search results 4. Writes the results to a Microsoft Excel file

What is the total number of steps that require human interaction?

- A. One
- B. Two
- C. Three
- D. Four

Answer: A

Explanation:

The only step that requires human interaction is the first one, where the user is prompted

for an input company name. The rest of the steps are performed by the automation process without any human intervention.

NEW QUESTION 70

What is a pre-requisite for running functional test cases in REFramework?

- A. Invoke Process XAML file
- B. Invoke InitAllSettings XAML file
- C. Invoke SetTransactionStatus XAML file
- D. Invoke Main XAML file

Answer: B

Explanation:

A pre-requisite for running functional test cases in REFramework is to invoke the InitAllSettings XAML file, which initializes the application, reads the configuration file, and sets the log level. This file is invoked in the Init state of the Main XAML file, which is the entry point of the REFramework. By invoking the InitAllSettings file, you can ensure that the test cases have access to the necessary settings and parameters for the automation project. (UiPath Studio - Testing Frameworks - UiPath Academy)

References:

- ? Studio - Testing Frameworks - UiPath Documentation Portal
- ? UiPath Studio - Testing Frameworks - UiPath Academy
- ? REFramework documentation.pdf - Google Drive

NEW QUESTION 73

What method can be used to change the index of an existing column in a datatable?

- A. SetIndex
- B. MoveAt
- C. SetColumnIndex
- D. SetOrdinal

Answer: D

Explanation:

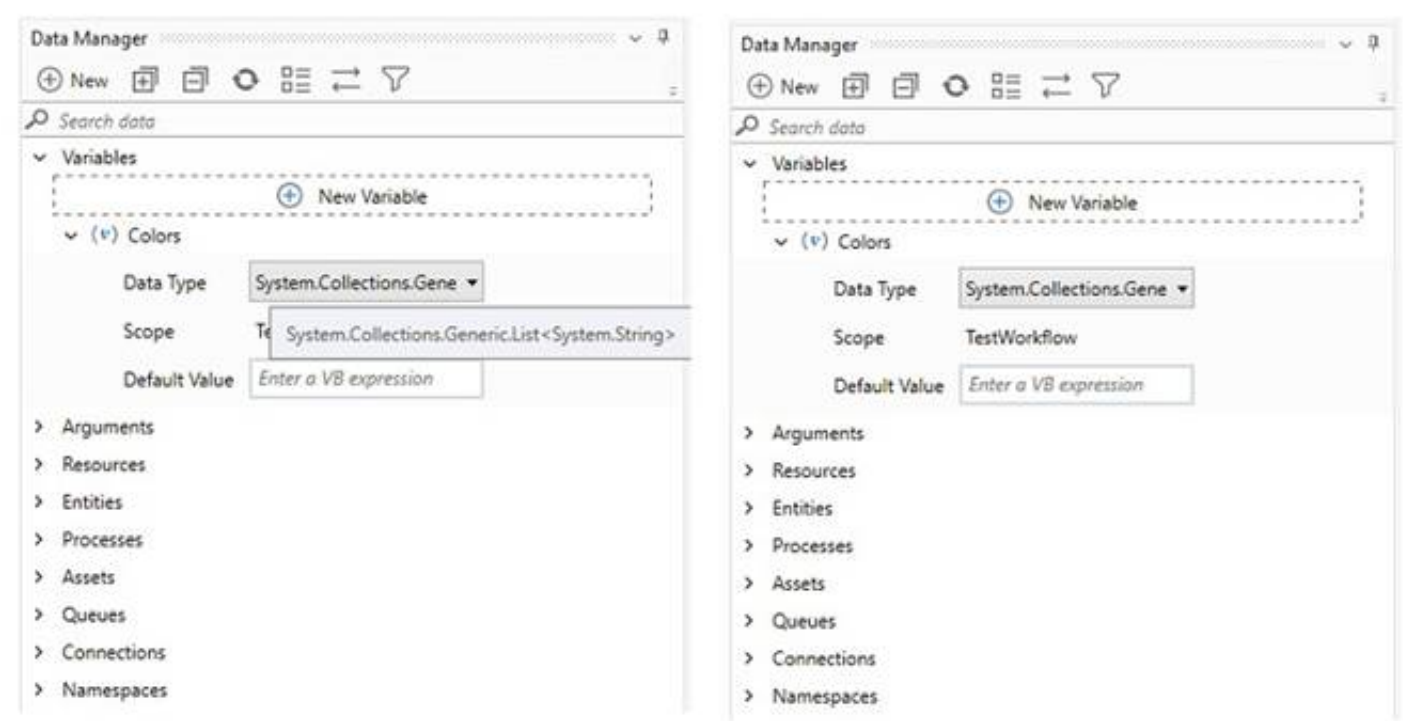
The SetOrdinal method of the DataColumn class can be used to change the index or position of an existing column in a datatable. The method takes an integer argument that specifies the new ordinal or position of the column. For example, to move the first column to the last position, one can use: yourDataTable.Columns(0).SetOrdinal(yourDataTable.Columns.Count - 1). (UiPath Automation Developer study guide)

References:

- ? DataColumn.SetOrdinal Method
- ? How to move Column from Index 0 to Index 10 in datatable

NEW QUESTION 77

A developer wants to add items to a list of strings using the Invoke Method activity. The list is declared as follows:



The **Invoke Method** activity has the following properties:

System.Activities.Statements.InvokeMethod		
Common		
DisplayName	Invoke Method	
Misc		
GenericTypeArguments	(Collection)	...
MethodName	Add	
Parameters	(Collection)	...
Private	<input type="checkbox"/>	
Result	Enter a VB expression ...	
RunAsynchronously	<input type="checkbox"/>	
TargetObject	Colors	...
TargetType	(null) ▼	

The **Parameters** property is as follows:

Parameters		
Direction	Type	Value
In	String	"Yellow"
Create Argument		
<div></div>		
<div>OK Cancel</div>		

Based on the information shown in the exhibits, what is the outcome of the Invoke Method activity?

- A. Colors will contain an item with the value "Colors: Yellow".
- B. Colors will contain an item with an empty value.
- C. Colors will contain an item with the value "Yellow".
- D. An exception will be thrown.

Answer: C

Explanation:

The Invoke Method activity is used to add items to a list of strings. In this case, the list is declared as “Colors”. The outcome of the Invoke Method activity will be that the list “Colors” will contain an item with the value “Yellow”. This is because the TargetObject property is set to “Colors”, which is the list variable, the MethodName property is set to “Add”, which is the method of the list class, and the Parameters property is set to “Yellow”, which is the value to be added to the list. (UiPath Studio documentation¹)

References:

? 1: Invoke Method - UiPath Activities.

NEW QUESTION 82

A developer is automating an invoice process for the finance department using a Dispatcher and Performer model with access to Orchestrator. New invoices are stored in a shared folder each morning Each invoice needs to be processed separately in the finance system as a single unit of work After each invoice is processed in the finance system, a unique output ID must be emailed to the finance team's email address.

How should the developer store the relevant data in Orchestrator?

- A. Upload individual invoice data and the finance team's email address as Specific Data in Queue Items
- B. Upload the finance team's email address as Specific Data in Queue Items Create an asset for each individual invoice data field
- C. Create an asset for each piece of invoice data as well as for the finance team's email address
- D. Upload individual invoice data as Specific Data in Queue Items Create an asset for the finance team's email address

Answer: D

Explanation:

The developer should store the relevant data in Orchestrator as follows:

? Upload individual invoice data as Specific Data in Queue Items. The Specific Data is a collection of key-value pairs that can store additional information for each queue item, such as the invoice number, date, amount, etc. The Specific Data can be added to the queue items using the Add Queue Item activity in the Dispatcher

workflow. The Specific Data can be retrieved from the queue items using the Get Transaction Item activity in the Performer workflow. The Specific Data can be used to process each invoice separately in the finance system as a single unit of work³.

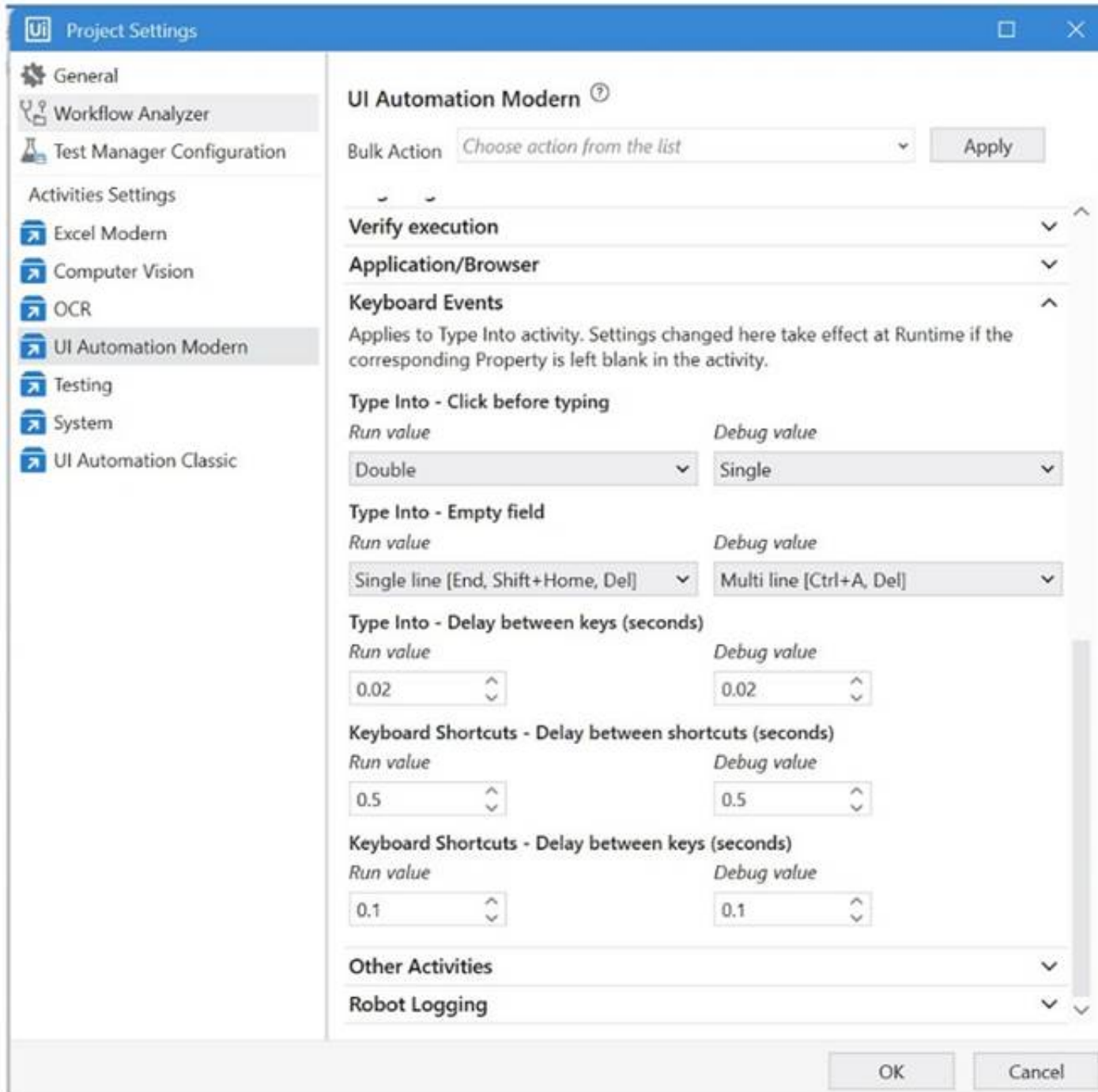
? Create an asset for the finance team’s email address. An asset is a global variable

that can store a specific value, such as a text, a number, a boolean, or a credential. An asset can be created and managed in Orchestrator, and accessed by the robots using the Get Asset activity. An asset can be used to store a value that is common for all the queue items, such as the finance team’s email address. The asset can be used to email the unique output ID to the finance team after each invoice is processed in the finance system⁴.

References: About Queues and Transactions and About Assets from UiPath documentation.

NEW QUESTION 84

A developer is building an automation which types text into a text file. The Activity Project Settings for UI Automation Modern activities are set as follows:



The developer has configured the properties of a **Type Into** activity as follows:



What is the behavior of the Type Into activity when executing the workflow?

- A. The activity will remove Multi Line in Run mode and a Single Line in Debug mode.
- B. The activity will use only properties set in Activity Project Settings.
- C. The activity will remove a Single Line in Run mode and in Debug mode.
- D. The activity will remove a Single Line in Run mode and Multi Line in Debug mode.

Answer: D

Explanation:

The Type Into activity is used to type text into a UI element. The activity has different properties that can be configured to control the input method, the delay between keystrokes, the cursor position, and the text formatting. The Activity Project Settings for UI Automation Modern activities allow you to set the default values for these properties at the project level. However, you can also override these values at the activity level by using the Properties panel. In this case, the Activity Project Settings are set to remove a Single Line in Run mode and Multi Line in Debug mode. This means that when the workflow is executed, the Type Into activity will delete any existing text in the UI element before typing the new text. If the workflow is run in Run mode, only one line of text will be deleted. If the workflow is run in Debug mode, all lines of text will be deleted. (UiPath Studio documentation1)

References:

? 1: Configuring Activity Project Settings - UiPath Studio.

NEW QUESTION 87

What status needs to be selected in the Set Transaction Status activity in UiPath Studio so that the respective Queue Item will be retried?

- A. Failed
- B. Retried
- C. Abandoned
- D. Postponed

Answer: A

Explanation:

The Set Transaction Status activity is used to mark the result of a queue item processing¹. If the queue item fails with an application exception, it can be retried by setting its status to Failed². The Retried status is automatically assigned by Orchestrator when a retry is triggered³. The Abandoned status is applied when a queue item remains in progress for too long without being processed⁴. The Postponed status is used to delay the processing of a queue item until a specific date and time.

References:

- ? Managing Queues in Studio documentation, Step 9: Set Transaction Status section
- ? Queue Item Statuses documentation, Retried section
- ? Automation Best Practices documentation, Queue Item Status section
- ? Queue Item Statuses documentation, Abandoned section
- ? Queue Item Statuses documentation, Postponed section

NEW QUESTION 92

Which action can be performed from UiPath Assistant?

- A. Set reminders for processes
- B. Set text assets for processes
- C. Set credential assets for processes
- D. Set queues for processes

Answer: A

Explanation:

The action that can be performed from UiPath Assistant is setting reminders for processes. UiPath Assistant is a desktop application that allows users to view, manage, and run processes that are published from UiPath Studio or Orchestrator. UiPath Assistant also enables users to set reminders for processes that they want to execute at a specific time or date. Reminders can be added, edited, or deleted from the Reminders widget in UiPath Assistant. Reminders can also be organized into folders and configured with different options, such as recurrence, priority, or notification². By setting reminders for processes, users can automate their tasks more efficiently and conveniently. References: UiPath Assistant and Reminders from UiPath documentation.

NEW QUESTION 93

Considering a process developed using REFramework, if the status of a transaction was set to "Failed" with the Error Type specified as "Business", the process will transition to which state?

- A. Get Transaction Data
- B. Initialization
- C. End Process
- D. Process Transaction

Answer: A

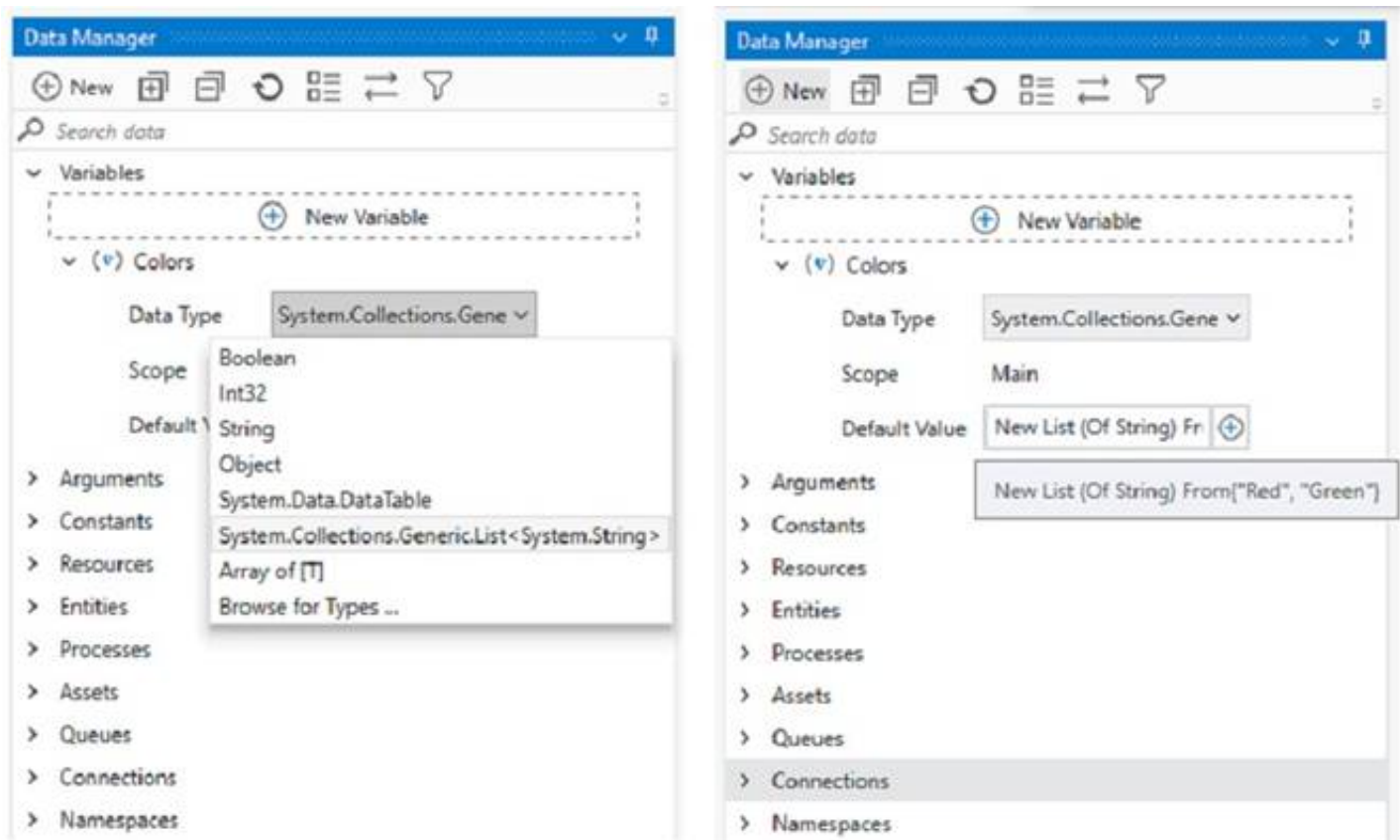
Explanation:

The REFramework template is a robust and scalable framework for building RPA projects¹. It uses a state machine to handle the different stages of the automation process². One of the states is the Process Transaction state, where the main actions are performed on each transaction item³. A transaction item can be a queue item from Orchestrator, a data row from an Excel file, or any other type of data that needs to be processed⁴. If the status of a transaction item is set to "Failed" with the Error Type specified as "Business", it means that the item did not meet a business or application requirement within the project and was therefore sent to a Set Transaction Status activity, which changed its status to Failed. In this case, the process will transition to the Get Transaction Data state, where the next transaction item is retrieved and assigned to be processed. The process will not transition to the Initialization, End Process, or Process Transaction states, as these are used for different purposes in the REFramework. References:

- ? The UiPath ReFramework documentation from UiPath
- ? State Machines documentation from UiPath
- ? Process.xaml documentation from UiPath
- ? TransactionItem Variable documentation from UiPath
- ? [Queue Item Statuses] documentation from UiPath
- ? [GetTransactionData.xaml] documentation from UiPath

NEW QUESTION 95

A developer wants to add items to a list of strings using the Invoke Method activity. The list is declared as follows:



The Invoke Method includes the following properties:

System.Activities.Statements.InvokeMethod	
Common	
DisplayName	Invoke Method
Misc	
GenericTypeArguments	(Collection) ...
MethodName	Add
Parameters	(Collection) ...
Private	<input type="checkbox"/>
Result	Enter a VB expression ...
RunAsynchronously	<input type="checkbox"/>
TargetObject	Colors ...
TargetType	(null) ▼

The Parameters property is as follows:

Direction	Type	Value
In	String	"Yellow"
Create Argument		

OK Cancel

Based on the exhibits, what is the outcome of this Invoke Method activity?

- A. Invoke Method activity will throw an error.
- B. Colors will contain items in the following order: "Yellow", "Red", "Green".
- C. Colors will contain items in the following order: "Red", "Green", "Yellow".
- D. Colors will contain items in the following order: "Red", "Green".

Answer: C

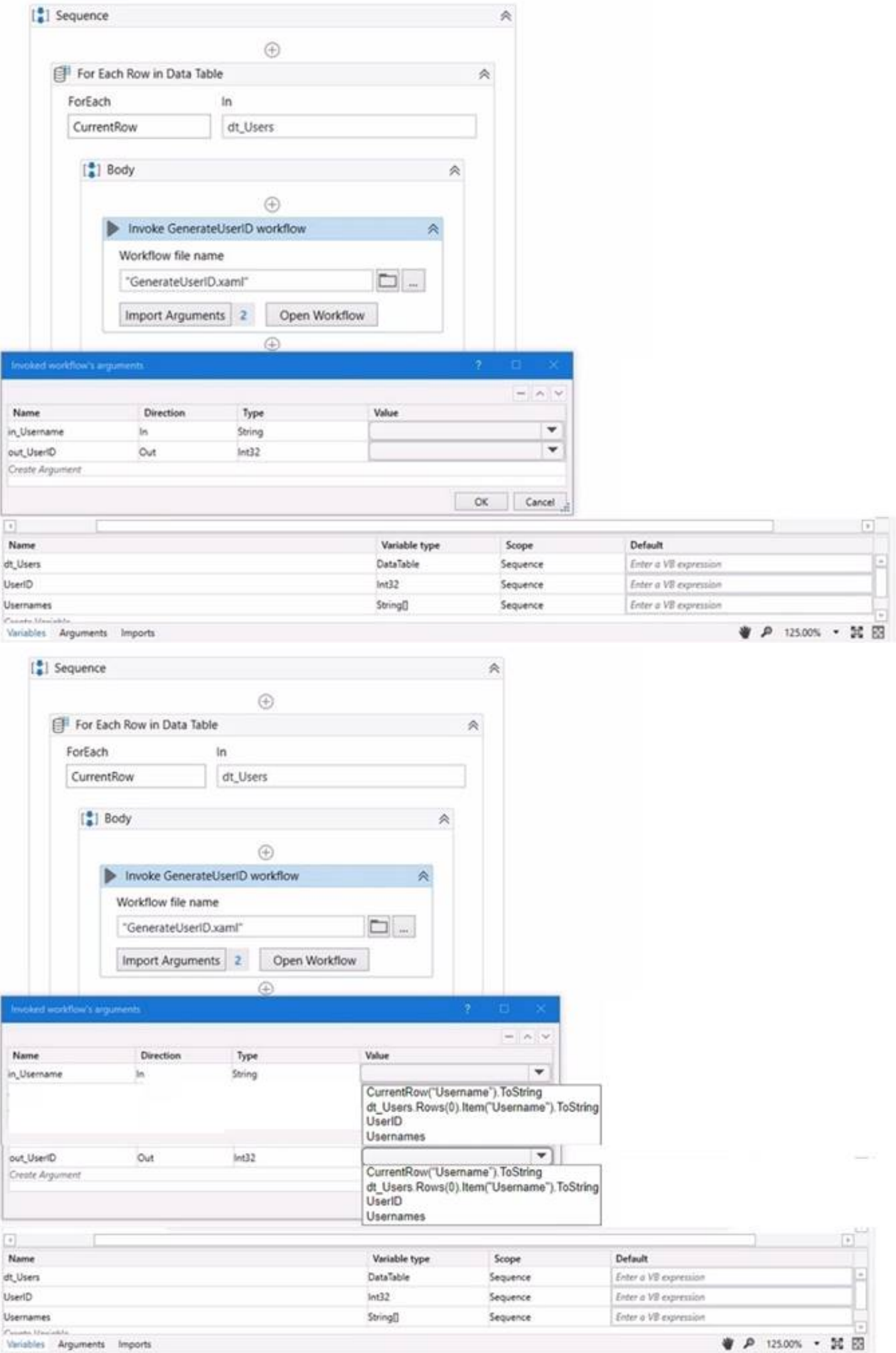
Explanation:

The Invoke Method activity is used to execute a method of a class or an object¹. In this case, the developer wants to add items to a list of strings using the Add method of the List class². The list is declared as Colors and initialized with two items: "Red" and "Green". The Invoke Method activity has the following properties:
 ? TargetObject: Colors (the list variable)

? MethodName: Add (the method of the List class)
? Parameters: Direction - In, Type - String, Value - "Yellow" (the item to be added to the list)
Based on these properties, the Invoke Method activity will add the string "Yellow" to the end of the Colors list. Therefore, the outcome of this Invoke Method activity is that Colors will contain items in the following order: "Red", "Green", "Yellow".
Option A is incorrect because the Invoke Method activity will not throw an error, as the properties are configured correctly. Option B is incorrect because the order of the items in the list will not change, as the Add method appends the item to the end of the list. Option D is incorrect because the list will have three items, not two, as the Add method does not overwrite any existing item.
References:
? Invoke Method activity documentation from UiPath
? List<T>.Add(T) Method documentation from Microsoft

NEW QUESTION 100
HOTSPOT

A developer wants to map the arguments that pass data to and from GenerateUserID.xaml to the appropriate values in Main.xaml. The dt_Users datatable variable contains the columns First Name: Last Name Date of Birth and Username.
Instructions: From the Value drop-down lists shown in the following exhibit, select the correct variable that corresponds to each argument.



The screenshot displays the UiPath Studio interface for configuring an 'Invoke GenerateUserID workflow' activity. The 'Import Arguments' button is clicked, opening the 'Invoked workflow's arguments' dialog. The dialog shows two arguments: 'in_Username' (In, String) and 'out_UserID' (Out, Int32). The 'Value' column for 'in_Username' is empty, and the 'Value' column for 'out_UserID' is empty. Below the dialog, the 'Variables' pane shows the 'dt_Users' variable (DataTable, Sequence) and the 'Usernames' variable (String[], Sequence). The 'dt_Users' variable is expanded, showing its columns: 'First Name', 'Last Name', 'Date of Birth', and 'Username'.

A. Mastered

B. Not Mastered

Answer: A

Explanation:

The values to select from the drop-down lists for the in_Username and Out_UserID arguments are:

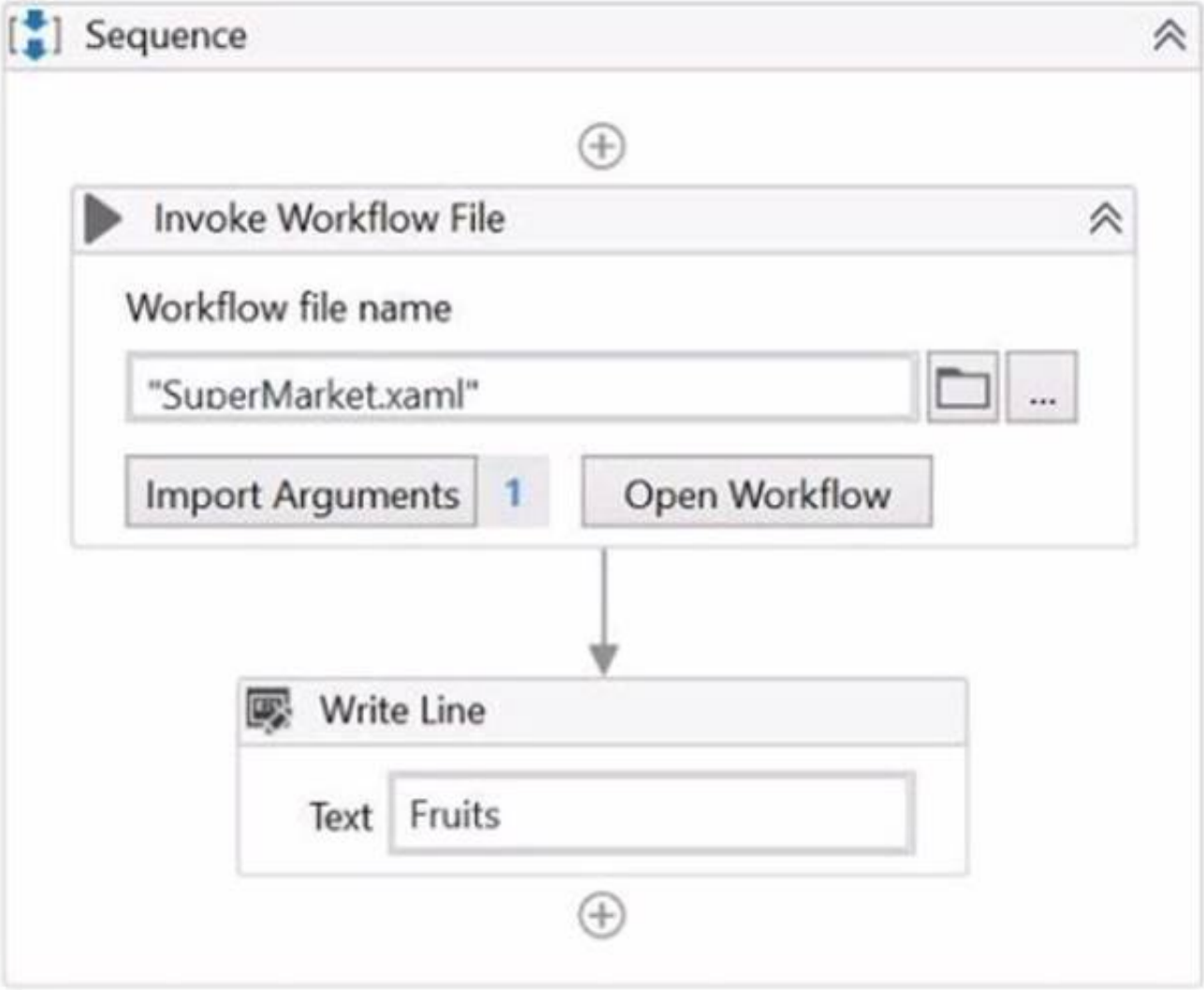
? in_Username: CurrentRow("Username").ToString

? Out_UserID: UserID

These values will ensure that the in_Username argument receives the value of the Username column from the current row of the dt_Users datatable, and the Out_UserID argument returns the value of the UserID variable that is generated by the GenerateUserID.xaml workflow.

NEW QUESTION 103

A developer has created an automation process that includes:



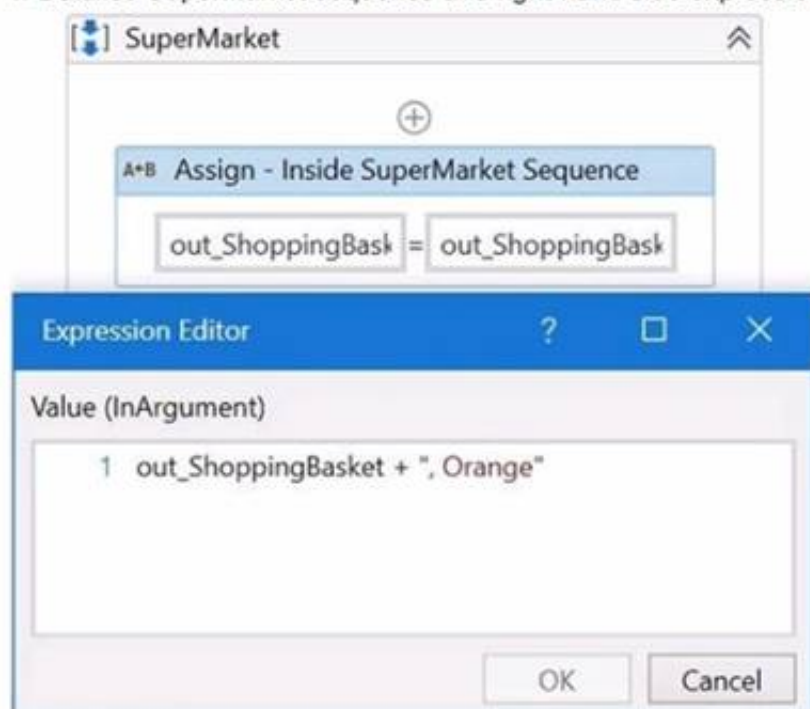
2. Variables in the Variable panel in the Main.xaml file:

Name	Variable type	Scope	Default
Fruits	String	Sequence	"Apple"
Create Variable			

3. Main.xaml file invokes the SuperMarket workflow using the following argument:

Name	Direction	Type	Value
out_ShoppingBasket	Out	String	Fruits
Create Argument			

4. Detailed SuperMarket sequence and right-hand side expression shown below:



Based on the information shown in the exhibits, what is the output of the Write Line activity in the Main xaml file?

- A. Apple
- B. Orange
- C. Apple Orange
- D. Orange Apple

Answer: B

Explanation:

The Write Line activity is used to write a specified text to the Output panel. The text can be a string literal, a variable, or an expression. In this case, the Write Line activity in the Main xaml file has the text "out_ShoppingBasket + ", "Orange"". The out_ShoppingBasket is a variable of type String, which is declared in the Main xaml file and has the default value of "Apple". The variable is passed as an argument to the SuperMarket xaml file, where it is assigned a new value of "Orange". The argument direction is Out, which means that the value of the argument is passed back to the Main xaml file after the execution of the SuperMarket xaml file. Therefore, the value of the out_ShoppingBasket variable in the Main xaml file is changed from "Apple" to "Orange". The expression "out_ShoppingBasket + ", "Orange"" concatenates the value of the out_ShoppingBasket variable with a comma and a space, followed by the string literal "Orange". The result of this expression is "Orange, Orange". The Write Line activity writes this text to the Output panel. Therefore, the answer is B. Orange. References: Write Line, Variables, Arguments

NEW QUESTION 106

A developer wants to create a process using a Flow Switch activity. What is a feature of this activity?

- A. Supports up to three expressions by default
- B. Two Default cases can be defined
- C. Default case is executed before the expression is evaluated
- D. Default case is executed if no cases match the expression

Answer: D

Explanation:

The Flow Switch activity is a conditional node that provides branching for the flow of control based on a match criterion when more than two alternative branches are required. The Flow Switch activity has an Expression property that can be of any type, and a dictionary of Cases that consists of pairs of keys and activities. The Flow Switch activity evaluates the Expression and compares it against each of the keys in the Cases. If a match is found, the corresponding activity is executed. If no match is found, the Default case is executed, if it is defined. The Default case is an optional activity that serves as a fallback option when none of the cases match the expression. Therefore, the answer is D. Default case is executed if no cases match the expression. References: Flow Switch, About Control Flow

NEW QUESTION 109

A developer configured the properties for a Click activity on an element inside a web page as shown in the following exhibit.

Properties

UiPath.UIAutomationNext.Activities.NClick

Common

Continue on error: Continue executing the activities in the automat ☐ ...

Delay after: Delay (in seconds) after this activity is completed, be ...

Delay before: Delay (in seconds) to wait before executing this activ ...

DisplayName: Click

Timeout: The amount of time (in seconds) to wait for the ...

Input

Click type: NClickType.Single

Cursor motion type: Specifies the type of motion performed by the m ...

Mouse button: NMouseButton.Left

Target

Click offset: (null)

Fuzzy selector: "<webctrl aria-role='button' type='submit' tag='IN ...

Native text: Enter a VB expression

Responsive websites: ☐

Strict selector: "<webctrl aria-role='button' css-selector='body&g ...

Targeting methods: Strict selector

Visibility check: Interactive (for Fuzzy Selector)

Wait for page load: NWaitForReady.Interactive

Window selector (Application instance): "<html app='msedge.exe' title='*' />"

Verify execution: (null)

Input/Output Element

Input element: The Input UI Element defines the screen element tha ...

Output element: Output a UI Element to use in other activities as an ...

Misc

Private: ☐

Options

Alter disabled element: When selected, the activity executes the action e ☐ ...

Input mode: Same as App/Browser

Key modifiers: NKeyModifiers.None

An animation on the web page never completely loads but the element indicated in the Click activity does load within the specified timeout duration. What occurs when this Click activity executes?

- A. Element is clicked once the element is fully loaded.
- B. Timeout error occurs without clicking on the element.
- C. Waits 10 seconds before clicking on the element.
- D. Continues to the next activity after 30 seconds without clicking on the element.

Answer: A

Explanation:

The Click activity is used to simulate a mouse click on a specified UI element, such as a button or a link¹. It has several properties that can be configured to customize its behavior, such as the input method, the click type, the timeout, and the wait for ready¹.

? The input method determines how the click is performed. It can be Default, Simulate, or Window Messages. The Default method uses the hardware driver to simulate the click, and it requires the target element to be visible and in focus. The Simulate and Window Messages methods use the technology of the target application to inject the click, and they can work in the background, even if the target element is hidden or minimized².

? The click type determines which mouse button is used for the click. It can be Single, Double, Down, or Up. The Single and Double types perform a single or double click using the left mouse button. The Down and Up types perform a press or release action using any mouse button¹.

? The timeout determines how long the activity waits for the target element to appear before throwing an error. It is measured in milliseconds, and it has a default value of 30000 (30 seconds). If the timeout is exceeded, the activity fails with a TimeoutException¹.

? The wait for ready determines when the activity executes. It can be None, Interactive, or Complete. The None option executes the activity immediately. The Interactive option executes the activity after the target element is loaded. The Complete option executes the activity after the target application is loaded¹.

In your case, you have configured the properties for the Click activity as follows:

? Input method: Simulate
? Click type: Single
? Timeout: 30000
? Wait for ready: Complete

This means that the Click activity will use the Simulate method to perform a single click on the target element in the background, after waiting for 30 seconds or until the target application is fully loaded, whichever comes first.

Since you have mentioned that an animation on the web page never completely loads but the element indicated in the Click activity does load within the specified timeout duration, what occurs when this Click activity executes is:

Element is clicked once the element is fully loaded.

This is because the Simulate method can work in the background, even if the web page is hidden or minimized, and it does not depend on the animation to complete. The Complete option for wait for ready ensures that the Click activity waits until the target element is loaded before clicking on it. The timeout value of 30000 does not affect this scenario, because it is not exceeded.

Therefore, option A is correct.

References:

? Click - UiPath Documentation Portal.

? What are different Input methods in UiPath - UiPath Community Forum.

NEW QUESTION 110

.....

Thank You for Trying Our Product

We offer two products:

1st - We have Practice Tests Software with Actual Exam Questions

2nd - Questions and Answers in PDF Format

UiPath-ADAv1 Practice Exam Features:

- * UiPath-ADAv1 Questions and Answers Updated Frequently
- * UiPath-ADAv1 Practice Questions Verified by Expert Senior Certified Staff
- * UiPath-ADAv1 Most Realistic Questions that Guarantee you a Pass on Your FirstTry
- * UiPath-ADAv1 Practice Test Questions in Multiple Choice Formats and Updatesfor 1 Year

100% Actual & Verified — Instant Download, Please Click
[Order The UiPath-ADAv1 Practice Test Here](#)