

HP

Exam Questions HPE0-S60

Delta - HPE Compute Solutions



NEW QUESTION 1

Your customer has an HPE Synergy frame equipped with a D3940 Storage Module. Each of the compute nodes has an appropriate storage controller Installed and two 12Gb SAS switches installed in the first fabric.

The customer reports that compute nodes cannot access the storage module. What should you verify first when troubleshooting this problem?

- A. If the D3940 module is imported in managed state that allows volume provisioning.
- B. If there is a logical interconnect created based on the 12Gb SAS switches.
- C. If the D3940 storage module is properly licensed through HPE OneView interface.
- D. If there is at least one iSCSI network configured that will provide access to the module.

Answer: A

NEW QUESTION 2

Which statement about HPE Apollo 2000 Gen10 Plus platform is true?

- A. It is equipped with HPE Persistent memory by default
- B. It can support a single processor only and up to 4 per chassis
- C. It is fully managed using HPE OneView including all connections
- D. It offers servers with AMD EPYC and Intel Xeon Scalable CPUs

Answer: B

NEW QUESTION 3

The proposal consists of.

- 3 HPE Synergy 12000 frames
- 6 HPE Composer 2 modules
- 2 HPE Virtual Connect SE 100 GO F32 Module
- 4 HPE Synergy 50 GO interconnect Link Module

Which statements about this proposed design are true? (Select two.)

- A. The selected interconnect modules do not provide the requested WWN virtualization
- B. HPE Synergy 50Gb ILMs must be replaced with HPE Virtual Connect SE 100 GO F32 modules
- C. The current setup can support up to 18 HPE Synergy 480 Gen10 Plus compute modules
- D. FC upgrade licenses for HPE Virtual Connect SE 100 GbF32 Module must be added
- E. Remove 4 HPE Composer 2 modules from the design, as they are not required

Answer: BD

NEW QUESTION 4

Your customer has the following HPE Synergy setup

- 3 HPE Synergy 12000 Frames
- 4 HPE Virtual Connect SE 100 Gb F32 Modules
- 2 HPE Synergy 50 GO Interconnect Link Modules
- 36 HPE Synergy 480 Gen10 Plus compute modules
- 2 HPE Composer 2 modules

Which statement about this setup is true?

- A. To use all compute nodes, the customer must create at least two logical enclosures
- B. To manage all frames, the customer must buy two additional HPE Composer 2 modules
- C. The customer must buy 36 HPE OneView Advanced licenses to manage compute modules
- D. The customer can add one D3940 storage Module to each of the frames

Answer: C

NEW QUESTION 5

You plan to configure a Link Aggregation Group (LAG) for two connections within a server profile for a compute node running an ESXi system.

What is required from the VMware side to enable LAG?

- A. Virtual Distributed Switch
- B. vSphere Standard license
- C. Load balancing cluster
- D. Dedicated VMKernel port

Answer: D

NEW QUESTION 6

Which statement about an HPE Oneview support dump is true?

- A. Appliance support dump by default contains a logical enclosure support dump
- B. Support dump is a binary file that can be opened only in a dedicated application
- C. Support dump can be created if HPE Virtual Connect modules are installed in the frame
- D. Preview support dump is available only when creating an appliance support dump

Answer: B

NEW QUESTION 7

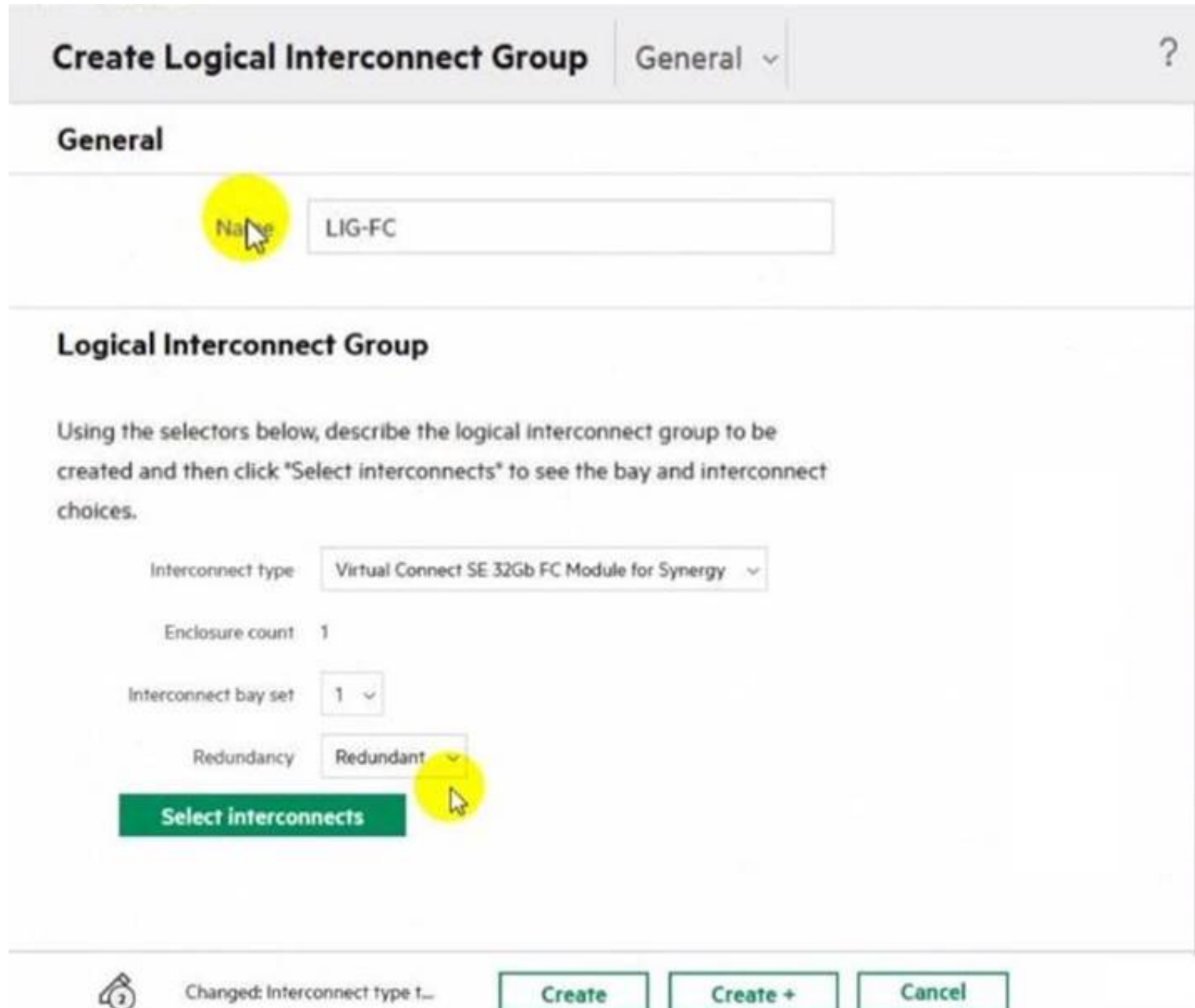
Your customer plans to setup an HPE Synergy solution based on SY480 Gen10 compute nodes with the following connectivity options - SAS connectivity installed in the first fabric - FC connectivity Installed In the second fabric - Ethernet connectivity installed in the third fabric. Which statement regarding this setup is true?

- A. Each compute node must have at least 768GB of memory installed
- B. Interconnect modules that provide SAS connectivity should be moved to the third fabric
- C. Each interconnect module in each fabric must be properly licensed in HPE OneView
- D. Compute nodes must have a second CPU installed to access the second fabric.

Answer: A

NEW QUESTION 8

Refer to the exhibit.



Which statement about this logical interconnect group is true?

- A. Both modules are located in different frames for redundancy
- B. For an uplink set, ports from different modules can be selected
- C. interconnect modules are installed in interconnect bays 1 and 4
- D. An additional license is required to change the enclosure count

Answer: D

NEW QUESTION 9

Which HPE Virtual Connect feature allows an administrator to suppress excessive inbound multicast broadcast and destination lookup failure (OLF) packets?

- A. Pause flood protection
- B. Loop protection
- C. LLDP tagging
- D. Storm control

Answer: D

NEW QUESTION 10

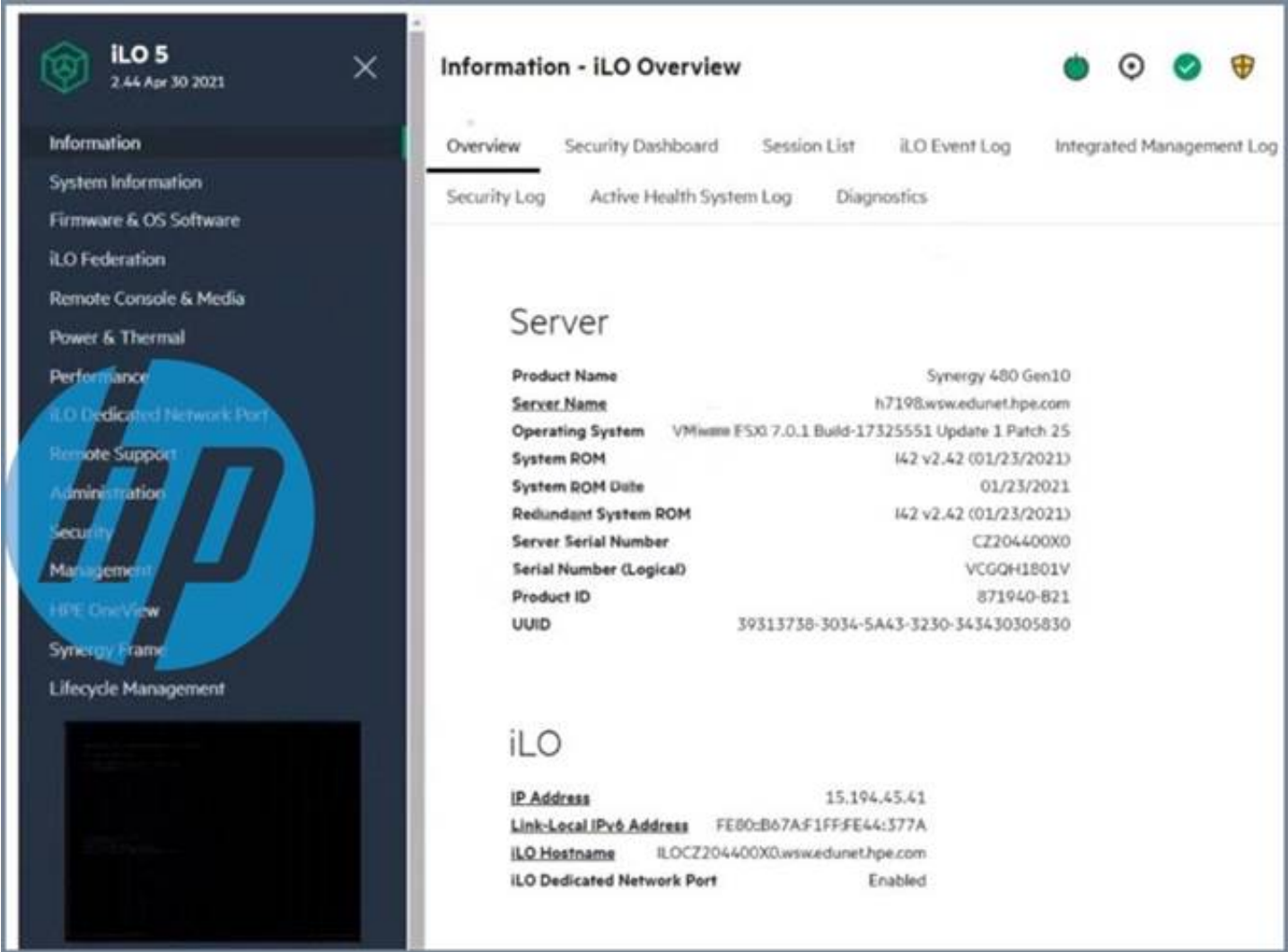
In the past a customer experienced a networking issue where network ports went down and came back up in quick succession. Which HPE Virtual Connect SE 100 GD F32 Module for HPE Synergy feature can be configured to disable such ports?

- A. Pause flood protection
- B. sFlow
- C. Storm control
- D. Port flap protection

Answer: B

NEW QUESTION 10

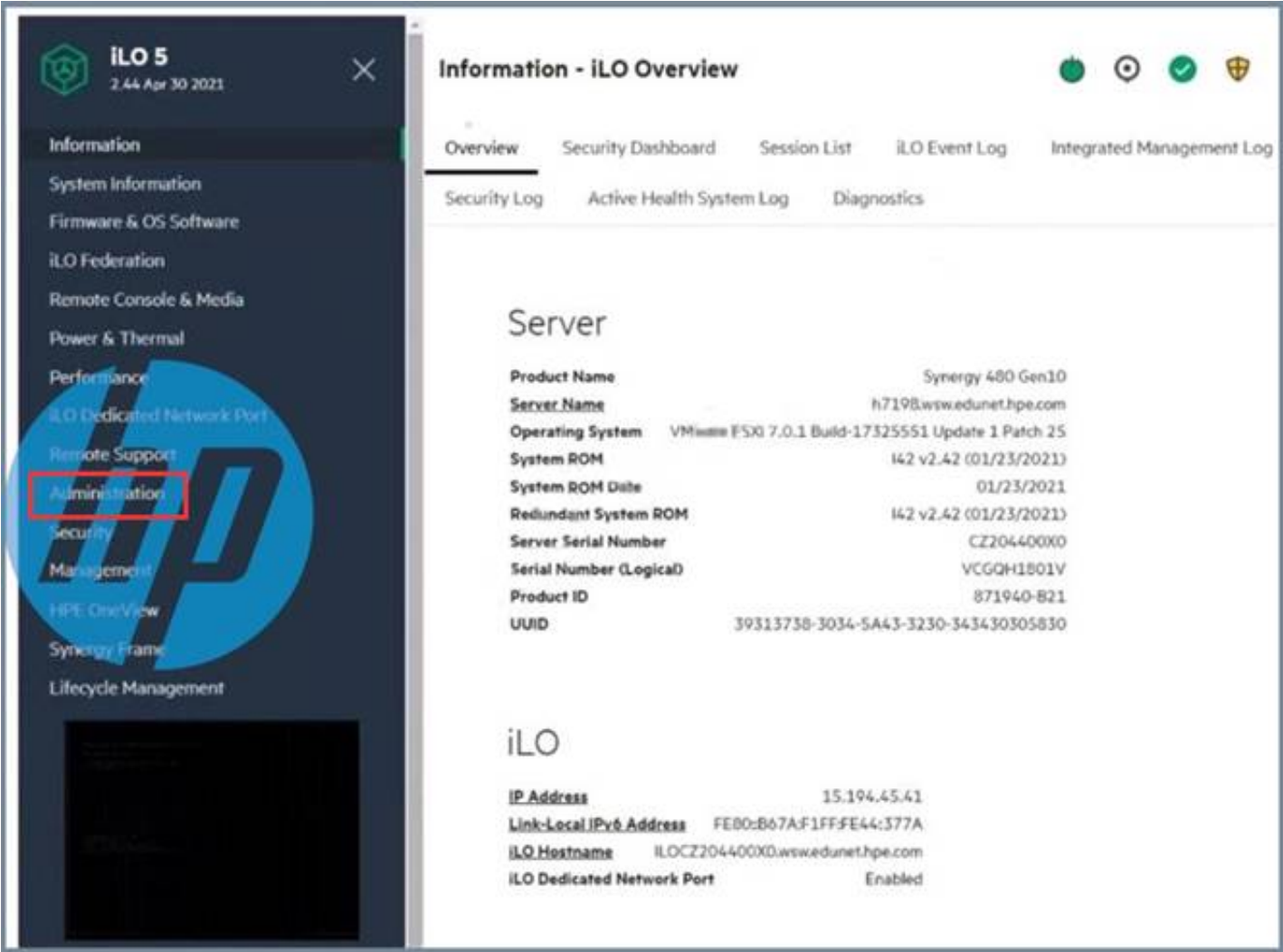
Click the area within the iLO management interface that will allow you to access workload Advisor.



- A. Mastered
- B. Not Mastered

Answer: A

Explanation:



NEW QUESTION 15

An HPE Synergy customer needs to prevent a timeout and loss of communication during an external switch firmware upgrade. Click the parameter that the customer should configure within an uplink set to meet this requirement

Create Uplink Set ?

General

Name

Prod-US

Consistency checking

Exact match ▾

Type

Ethernet ▾

Connection mode

Automatic

LACP timer

Short (1s) ▾

LACP load balancing

Source & Destination MAC Address ▾

LACP failover trigger

All active uplinks transition to offline ▾

LACP distribute uplink ports

☒

- A. Mastered
- B. Not Mastered

Answer: A

Explanation:

Create Uplink Set ?

General

Name

Prod-US

Consistency checking

Exact match ▾

Type

Ethernet ▾

Connection mode

Automatic

LACP timer

Short (1s) ▾

LACP load balancing

Source & Destination MAC Address ▾

LACP failover trigger

All active uplinks transition to offline ▾

LACP distribute uplink ports

☒

NEW QUESTION 19

You modified a logical interconnect group mat is used to configure logical interconnects in five different logical enclosures. What will be the impact of that change?

- A. All physical interconnects from affected logical interconnects will be placed in a maintenance mode
- B. All physical interconnects from the affected logical interconnects must he rebooted to activate the new configuration
- C. All logical interconnects configured using this logical Interconnect group will report inconsistency
- D. All logical interconnects configured using this logical interconnect group will be automatically updated

Answer: A

NEW QUESTION 20

Refer to the exhibit.

Create Logical Interconnect Group

General

?

General

Name

LIG-ETH

Logical Interconnect Group

Using the selectors below, describe the logical interconnect group to be created and then click "Select interconnects" to see the bay and interconnect choices.

Interconnect type

Virtual Connect SE 100Gb F32 Module for Synergy

Enclosure count

3

Interconnect bay set

3

Redundancy

Redundant

Downlink speed

25 Gb/s

Select interconnects

2

Changed: Name to "LIG-ETH"

Create

Create +

Cancel

Which statement about this logical interconnect group is true?

- A. The master modules are located in the interconnect bays 2 and 5
- B. For the given downlink speed, the maximum number of frames is reached
- C. Both master modules are located in the same HPE Synergy frame
- D. To use interconnect bay set 3, all compute nodes must be half-height

Answer: C

NEW QUESTION 23

Which statement about HPE Superdome Flex 280 is true?

- A. It supports 2 to 8 sockets in 2-socket increments.
- B. it cannot be managed using HPE OneView.
- C. It must be equipped with at least 768 GB of memory.
- D. It can support up to two nPars with an external RMC.

Answer: C

NEW QUESTION 24

Your customer reports that an external FC boot volume for Windows server is visible four times in the Disk Management 1 online and 3 offline. What should you do to resolve this issue?

- A. Disable deduplication for this volume at the array level
- B. Remove the offline disks using array management tools
- C. Install and configure MPIO on the Windows system
- D. Remove the offline disks using Windows Disk Management

Answer: C

NEW QUESTION 27

Which statement about HPE OneView milestone releases is true?

- A. A milestone release is a release which must be installed on HPE Composer to support current version of the Service Pack for Synergy
- B. A milestone release is a release that is published when HPE releases new hardware components to immediately support new systems
- C. A milestone release is available for selected partners that give access to HPE OneView features which are not officially announced.
- D. A milestone release is a release with an enhanced update architecture that is a prerequisite prior to updating to a subsequent release.

Answer: A

NEW QUESTION 30

Your customer plans to deploy VMware ESXi 7.0 U2 and they are looking for a hardware platform that will allow them to use up to 24 TB of physical memory. Which HPE compute system meets this customer's requirements?

- A. HPE ProLiant DL380 Gen10 Plus
- B. HPE Synergy 480 Gen10 Plus
- C. HPE ProLiant DL560 Gen10
- D. HPE Superdome Flex 280

Answer: A

NEW QUESTION 31

Your customer used to manage their HPE 3PAR arrays using HPE OneView. Now they have replaced these arrays with HPE Primera. How does managing the new arrays compare to managing their old arrays?

- A. HPE OneView offers additional functionalities for HPE Primera like CPG management
- B. HPE OneView offers limited support for HPE Primera because of the firmware differences
- C. To manage HPE Primera using HPE OneView, a dedicated license is required
- D. a dedicated license is required
- E. Management procedures and features are the same for both types of the array

Answer: C

NEW QUESTION 35

You configured a vVol datastore using HPE Storage Integration Pack for VMware vCenter. Which storage object should you check using SSMC to verify whether vVol datastore is configured properly?

- A. App Volume Set
- B. Storage Container
- C. Virtual Volume Set
- D. virtual Volume

Answer: C

NEW QUESTION 37

Which tool can be used to evaluate the health of an HPE OneView appliance before proceeding with an appliance update?

- A. HPE Composer Maintenance Console
- B. HPE OneView Update Readiness Checker
- C. HPE OneView Global Dashboard
- D. HPE OneView Firmware Compliance Report

Answer: A

NEW QUESTION 40

Your customer plans to deploy a VMware ESXi with HPE Synergy platform. They also plan a vSAN deployment leveraging HPE D3940 Storage Modules and SSD drives.

The customer requested the following components:

- HPE Synergy frame with ten HPE Synergy 480 Gen10 Plus compute modules
 - Two HPE Virtual Connect SE 100Gb F32 Modules for Synergy
 - An appropriate number of vSAN Standard licenses for each compute node
 - One HPE D3940 Storage Module with 40 SSDs - All required cables and options
- Which statement about this request is true?

- A. vSphere licenses should be added, as vSAN licenses do not replace vSphere licenses
- B. vSphere Standard licenses should be replaced with Enterprise Plus licenses to enable vSAN
- C. One HPE Virtual Connect SE 100Gb F32 Module for Synergy should be replaced with 50GB/S ILM
- D. 20 SSD drives should be removed from this setup, as D3940 supports only 20 SSD or SAS drives.

Answer: B

NEW QUESTION 45

Your customer is implementing an HPE Synergy solution based on three frames. Click each of the ports that can be used to connect satellite modules.



- A. Mastered
- B. Not Mastered

Answer: A

Explanation:



NEW QUESTION 50

Your customer has 6 logical enclosures spanning 18 HPE Synergy frames. The customer needs to add one more logical enclosure based on 5 HPE Synergy frames

How will this change impact the customer environment?

- A. The customer can add a new logical enclosure to the existing setup because the maximum number of logical enclosures in a single management ring is not reached.
- B. The customer has to expand the management ring capacity either by adding HPE Composer 2 modules or adding memory to reach 128GB per module.
- C. The customer has to create a new management ring for new logical enclosure because the maximum number of frames in a single management ring is reached.
- D. The customer can add a new logical enclosure to an existing setup once all required licenses are added to HPE OneView and associated with the new frames.

Answer: A

NEW QUESTION 55

Your customer plans to deploy a VMware ESXi with HPE Synergy platform. They plan to use Distributed Switches and DRS cluster

You are preparing a proposal with the following components:

- HPE Synergy frame with ten HPE Synergy 480 Gen10 Plus compute modules
- two HPE Virtual Connect SE 100Gb F32 Modules for Synergy
- an appropriate number of the vSphere Standard licenses for each compute node
- one HPE D3940 Storage Modules with 40 SSDs - all required cables and options Which statement about this proposal is true?

- A. One HPE Virtual Connect SE 100Gb F32 Module for Synergy should be replaced with 50GD/S ILM
- B. vSphere Standard licenses should be replaced with Enterprise Plus licenses to enable requested features
- C. 2 additional HPE Synergy 480 Gen10 Plus compute modules can be added to this setup
- D. 20 SSD drives should be removed from this setup, as D3940 supports only 20 SSD or SAS drive.

Answer: B

NEW QUESTION 60

Your customer has the following HPE Synergy setup:

- 15 HPE Synergy 12000 frames with 50Gb connectivity to each server port
- 2 HPE Composer 2 modules
- 15 HPE D3940 Storage Modules, one per frame
- 2 HPE 12Gb SAS switches per frame Which statement about this setup is true?

- A. The customer must create at least five logical enclosures for this setup.
- B. To manage 15 frames, additional HPE Composers are required.
- C. The customer can install up to 12 HPE Synergy 480 compute nodes per frame.
- D. If properly cabled, any compute node can access any HPE D3490 storage module

Answer: A

NEW QUESTION 64

Your customer has an HPE Synergy platform deployed and managed using HPE OneView. The customer also has HPE Superdome Flex with RMC deployed

They plan to deploy a second nPar and HPE Superdome Flex 280 They plan to manage new components using HPE OneView

What must be done to achieve this goal?

- A. The customer must use IL05 to add HPE Superdome Flex systems to HPE OneView
- B. The customer should deploy an HPE OneView appliance for HPE Superdome Flex management
- C. The customer must add a second Rack Management Controller for HPE Superdome Flex 280
- D. The customer has to add HPE Superdome Flex to the HPE OneView used to manage HPE Synergy

Answer: C

NEW QUESTION 67

Your customer plans to deploy VMware ESXi 7. 0 U2, and they are looking for a hardware platform that will allow them to use up to 16 CPU sockets

Which HPE compute system meets the customer requirements?

- A. HPE ProLiant DL580 Gen10
- B. HPE ProLiant OL380 Gen 10 Plus
- C. HPE Synergy 480 Gen10 Plus
- D. HPE Superdome Flex system

Answer: C

NEW QUESTION 68

Match HPE SimpliVity team with the definition.

Term		Definition
Arbiter		Non-hyperconverged servers that can exist in an HPE SimpliVity environment and provide additional compute capacity while consuming the storage provided by the hyperconverged nodes.
Compute node		Provides centralized management and events end-point for vCenter.
Intelligent Workload Optimizer		Integrates with VMware Distributed Resources Scheduler to ensure optimal placement of the VM compute resources.
Management Virtual Controller		Facilitates communication between nodes and resolves state conflicts to ensure service continuity.

- A. Mastered
- B. Not Mastered

Answer: A

Explanation:

Term		Definition
Arbiter		Non-hyperconverged servers that can exist in an HPE SimpliVity environment and provide additional compute capacity while consuming the storage provided by the hyperconverged nodes.
Compute node		Provides centralized management and events end-point for vCenter.
Intelligent Workload Optimizer		Integrates with VMware Distributed Resources Scheduler to ensure optimal placement of the VM compute resources.
Management Virtual Controller		Facilitates communication between nodes and resolves state conflicts to ensure service continuity.

NEW QUESTION 70

Which statement about the HPE D3940 storage module is true?

- A. SATA drives requires redundant 10 adapters to be installed in this module
- B. Up to five modules can be installed in a single frame with Gen10 servers
- C. it is configured through CLI available from HPE Synergy console
- D. Only one type of drives (SATA, SAS, SSD) can be installed in each module

Answer: C

NEW QUESTION 71

Your customer plans to manage HPE Primera using HPE Oneview
Which storage management tasks can be completed using HPE OneView for this environment?

- A. CPG management
- B. Volume provisioning
- C. Cache management
- D. Replication setup

Answer: B

NEW QUESTION 75

.....

Thank You for Trying Our Product

We offer two products:

1st - We have Practice Tests Software with Actual Exam Questions

2nd - Questions and Answers in PDF Format

HPE0-S60 Practice Exam Features:

- * HPE0-S60 Questions and Answers Updated Frequently
- * HPE0-S60 Practice Questions Verified by Expert Senior Certified Staff
- * HPE0-S60 Most Realistic Questions that Guarantee you a Pass on Your FirstTry
- * HPE0-S60 Practice Test Questions in Multiple Choice Formats and Updatesfor 1 Year

100% Actual & Verified — Instant Download, Please Click
[Order The HPE0-S60 Practice Test Here](#)