



# ITIL

## Exam Questions ITIL-Practitioner

ITIL Practitioner Certification - IT Service Management

## About ExamBible

### *Your Partner of IT Exam*

## Found in 1998

ExamBible is a company specialized on providing high quality IT exam practice study materials, especially Cisco CCNA, CCDA, CCNP, CCIE, Checkpoint CCSE, CompTIA A+, Network+ certification practice exams and so on. We guarantee that the candidates will not only pass any IT exam at the first attempt but also get profound understanding about the certificates they have got. There are so many alike companies in this industry, however, ExamBible has its unique advantages that other companies could not achieve.

## Our Advances

### \* 99.9% Uptime

All examinations will be up to date.

### \* 24/7 Quality Support

We will provide service round the clock.

### \* 100% Pass Rate

Our guarantee that you will pass the exam.

### \* Unique Gurantee

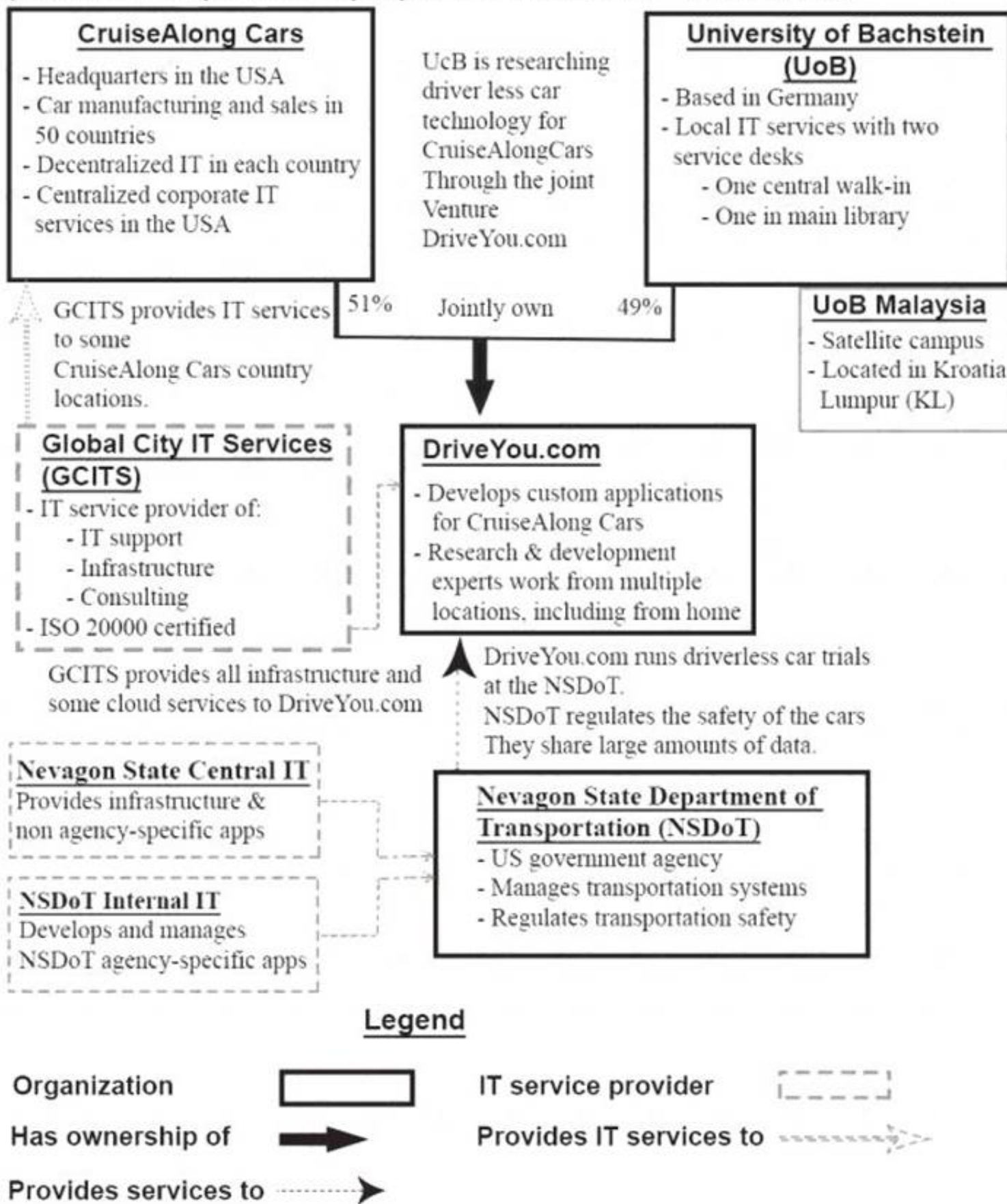
If you do not pass the exam at the first time, we will not only arrange FULL REFUND for you, but also provide you another exam of your claim, ABSOLUTELY FREE!

## NEW QUESTION 1

See the Scenario for additional information.

### Scenario:

(Note: The companies and people within the scenario are fictional)



### CruiseAlong Cars

CruiseAlong Cars is a car manufacturing and sales company with corporate headquarters in the United States of America. It has grown by acquisition over the last 20 years and has operations in over 50 countries. Each country has its own IT organization, with some central corporate IT services provided by the US parent company. In some countries CruiseAlong Cars has outsourced infrastructure and service desks. The largest IT supplier is Global City IT Services (GCITS). In two countries GCITS provides CruiseAlong Cars with full outsourced services. They also provide selected services in other countries.

Some of the issues that CruiseAlong Cars needs to address include:

- ▶ Inefficiencies caused by the current IT structure
- ▶ Inconsistency of IT services when employees are travelling

CruiseAlong Cars is working with a European university (the University of Bachstein) to research and develop driverless car technology. The venture operates as an independent company called DriveYou.com, and CruiseAlong Cars owns a 51% share.

### DriveYou.com

This is a small, innovative company, that is jointly owned by CruiseAlong Cars and the University of Bachstein (UoB). DriveYou.com develops custom applications using a highly collaborative, rapid and iterative development approach. Their employees are mostly research and development experts, working from multiple locations, with a significant number working from home. Initial driverless car testing is being conducted in the US at the Nevegon State Department of Transportation.

Infrastructure and cloud services are purchased from Global City IT Services and other providers, and these relationships are managed by a DriveYou.com supplier manager.

Some of the issues that DriveYou.com needs to address include:

- ▶ Better structure and accountability around their work practices
- ▶ Compliance with safety and other regulatory requirements.

### University of Bachstein (UoB)

The UoB is a university that is based Germany, with a satellite campus in Kuala Lumpur, Malaysia. In the past, some IT services were funded and run centrally, and some were funded and run independently by each faculty. Centrally owned services include a 'walk-in' service desk, plus a separate service desk in the main library, run by library staff. Library services and IT are both part of the university's administrative services division. Recently, under a new CIO, there has been a

drive to centralize and consolidate IT as a corporate function, although this has not been fully achieved.

The central IT department runs a variety of legacy systems, which serve students, administrators, researchers and academics. It also runs some high performance computing systems and high bandwidth networks across the main campus area.

Some of the issues that the UoB needs to address include:

- ▶ Complete the centralization and consolidation of IT
- ▶ Manage growth and increasing IT demand
- ▶ Demonstrate value through competitive, responsive and transparent services

Global City Services (GCITS)

GCITS is a global service provider which has grown through acquisition and which offers a wide range of services, including IT support, infrastructure and consulting. GCITS has mature and efficient IT service management processes, and holds an ISO/IEC 20000 certification.

GCITS provides the entire infrastructure and some cloud services for DriveYou.com, as well as a range of services in different countries to CruiseAlong Cars. Some of the issues that GCITS needs to address include:

- ▶ Succeed in establishing a strategic partnership with CruiseAlong Cars

Nevagon State Department of Transportation (NSDoT)

NSDoT is a government agency in the US state of Nevagon, where DriveYou.com is running their trials. It is responsible for managing transportation systems and safety. DriveYou.com must work with the agency to ensure that their trials comply with safety regulations, and the program includes bi0directional sharing of large amounts of data.

The NSDoT's internal IT team writes and manages most of their agency-specific applications, however most other applications and infrastructure are provided by the Nevagon State central IT department.

GCITS will create a new 'global mobile VIP service' for CruiseAlong Cars senior executives, which will give them access to corporate IT services from mobile devices, from any location. The new service will be delivered by the existing GCITS centralized service desk. It will include 24/7 support, and reported incidents and requests will be treated as a high priority.

GCITS has subcontracted global mobile network access to Mobilwork, an international telecom provider. Effective and efficient escalation of incidents will be crucial to the success of the global mobile VIP service. Staff in GCITS, CruiseAlong Cars and Mobilwork could be involved in escalation.

Which is the BEST tool to use, and to whom will it be provided?

- A. A RACI model authority matrix, provided to the project manager when approving the design costs.
- B. A stakeholder map, provided to the project manager when approving the design costs.
- C. A RACI model authority matrix, provided to the service desk during deployment.
- D. A stakeholder map, provided to the service desk during deployment.

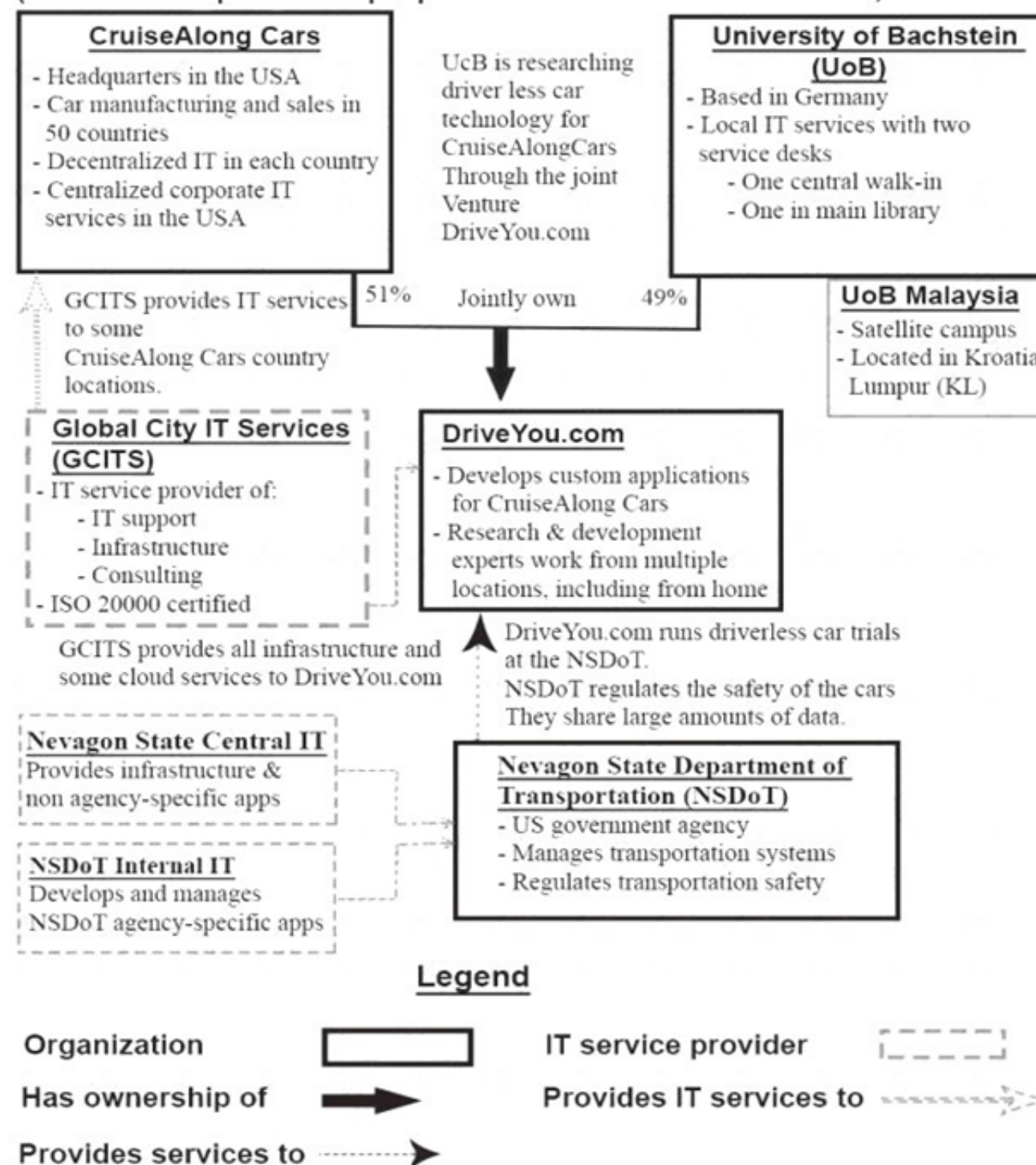
**Answer: C**

## NEW QUESTION 2

See the scenario for additional informational.

**Scenario:**

(Note: The companies and people within the scenario are fictional)



CruiseAlong Cars

CruiseAlong Cars is a car manufacturing and sales company with corporate headquarters in the United States of America. It has grown by acquisition over the last



20 years and has operations in over 50 countries. Each country has its own IT organization, with some central corporate IT services provided by the US parent company. In some countries CruiseAlong Cars has outsourced infrastructure and service desks. The largest IT supplier is Global City IT Services (GCITS). In two countries GCITS provides CruiseAlong Cars with full outsourced services. They also provide selected services in other countries.

Some of the issues that CruiseAlong Cars needs to address include:

- ▶ Inefficiencies caused by the current IT structure
- ▶ Inconsistency of IT services when employees are travelling

CruiseAlong Cars is working with a European university (the University of Bachstein) to research and develop driverless car technology. The venture operates as an independent company called DriveYou.com, and CruiseAlong Cars owns a 51% share.

DriveYou.com

This is a small, innovative company, that is jointly owned by CruiseAlong Cars and the University of Bachstein

(UoB). DriveYou.com develops custom applications using a highly collaborative, rapid and iterative development approach. Their employees are mostly research and development experts, working from multiple locations, with a significant number working from home. Initial driverless car testing is being conducted in the US at the Nevada State Department of Transportation.

Infrastructure and cloud services are purchased from Global City IT Services and other providers, and these relationships are managed by a DriveYou.com supplier manager.

Some of the issues that DriveYou.com needs to address include:

Better structure and accountability around their work practices Compliance with safety and other regulatory requirements.

University of Bachstein (UoB)

The UoB is a university that is based Germany, with a satellite campus in Kuala Lumpur, Malaysia. In the past, some IT services were funded and run centrally, and some were funded and run independently by each faculty. Centrally owned services include a 'walk-in' service desk, plus a separate service desk in the main library, run by library staff. Library services and IT are both part of the university's administrative services division. Recently, under a new CIO, there has been a drive to centralize and consolidate IT as a corporate function, although this has not been fully achieved.

The central IT department runs a variety of legacy systems, which serve students, administrators, researchers and academics. It also runs some high performance computing systems and high bandwidth networks across the main campus area.

Some of the issues that the UoB needs to address include:

- ▶ Complete the centralization and consolidation of IT
- ▶ Manage growth and increasing IT demand
- ▶ Demonstrate value through competitive, responsive and transparent services

Global City Services (GCITS)

GCITS is a global service provider which has grown through acquisition and which offers a wide range of services, including IT support, infrastructure and consulting. GCITS has mature and efficient IT service management processes, and holds an ISO/IEC 20000 certification.

GCITS provides the entire infrastructure and some cloud services for DriveYou.com, as well as a range of services in different countries to CruiseAlong Cars. Some of the issues that GCITS needs to address include:

- ▶ Succeed in establishing a strategic partnership with CruiseAlong Cars

Nevada State Department of Transportation (NSDOT)

NSDOT is a government agency in the US state of Nevada, where DriveYou.com is running their trials. It is responsible for managing transportation systems and safety. DriveYou.com must work with the agency to ensure that their trials comply with safety regulations, and the program includes bidirectional sharing of large amounts of data.

The NSDOT's internal IT team writes and manages most of their agency-specific applications, however most other applications and infrastructure are provided by the Nevada State central IT department. DriveYou.com decided to move the storage and management of their testing data to a new platform so that they can share it more effectively with the UoB. They also need to facilitate data transfer from new CruiseAlong Cars research facilities in Japan and Australia.

The DriveYou.com project manager needs to establish an effective channel of communication with CruiseAlong Cars' new research facilities. There is already a plan for communicating with other stakeholders.

Which is the BEST approach?

- A. Create a new comprehensive communications plan for all stakeholders before engaging with the research teams.
- B. Use the existing communications plan and send all previous communications to the research teams.
- C. Make contact with the research teams and build a specific communications approach to address their needs.
- D. Include the named contacts immediately on the project email distribution list and ask them for feedback.

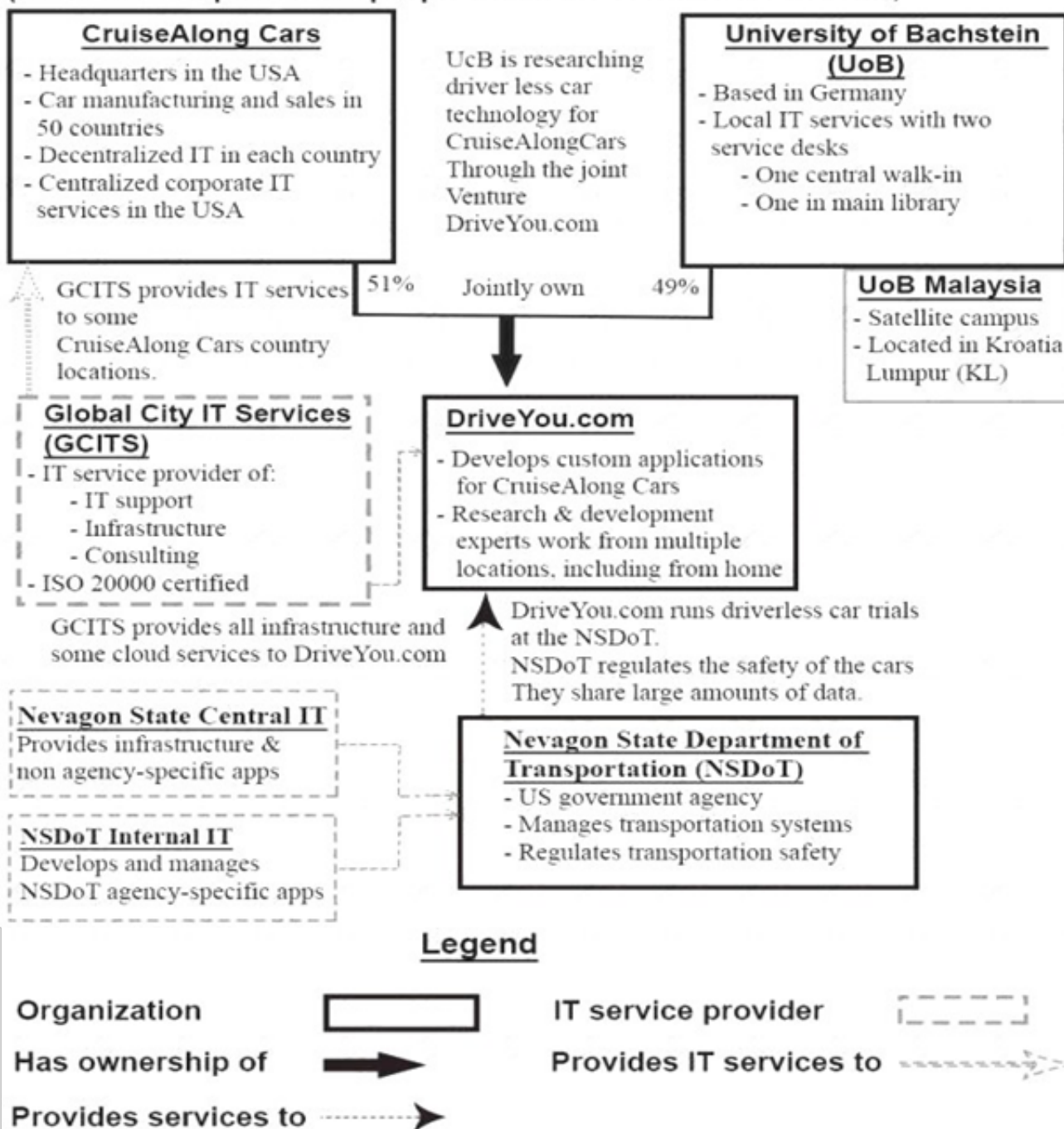
**Answer: C**

### NEW QUESTION 3

See the scenario for additional informational.

**Scenario:**

(Note: The companies and people within the scenario are fictional)



**CruiseAlong Cars**

CruiseAlong Cars is a car manufacturing and sales company with corporate headquarters in the United States of America. It has grown by acquisition over the last 20 years and has operations in over 50 countries. Each country has its own IT organization, with some central corporate IT services provided by the US parent company. In some countries CruiseAlong Cars has outsourced infrastructure and service desks. The largest IT supplier is Global City IT Services (GCITS). In two countries GCITS provides CruiseAlong Cars with full outsourced services. They also provide selected services in other countries.

Some of the issues that CruiseAlong Cars needs to address include:

- ▶ Inefficiencies caused by the current IT structure
- ▶ Inconsistency of IT services when employees are travelling

CruiseAlong Cars is working with a European university (the University of Bachstein) to research and develop driverless car technology. The venture operates as an independent company called DriveYou.com, and CruiseAlong Cars owns a 51% share.

**DriveYou.com**

This is a small, innovative company, that is jointly owned by CruiseAlong Cars and the University of Bachstein

(UoB). DriveYou.com develops custom applications using a highly collaborative, rapid and iterative development approach. Their employees are mostly research and development experts, working from multiple locations, with a significant number working from home. Initial driverless car testing is being conducted in the US at the Nevegon State Department of Transportation.

Infrastructure and cloud services are purchased from Global City IT Services and other providers, and these relationships are managed by a DriveYou.com supplier manager.

Some of the issues that DriveYou.com needs to address include:

Better structure and accountability around their work practices Compliance with safety and other regulatory requirements.

**University of Bachstein (UoB)**

The UoB is a university that is based Germany, with a satellite campus in Kuala Lumpur, Malaysia. In the past, some IT services were funded and run centrally, and some were funded and run independently by each faculty. Centrally owned services include a 'walk-in' service desk, plus a separate service desk in the main library, run by library staff. Library services and IT are both part of the university's administrative services division. Recently, under a new CIO, there has been a drive to centralize and consolidate IT as a corporate function, although this has not been fully achieved.

The central IT department runs a variety of legacy systems, which serve students, administrators, researchers and academics. It also runs some high performance computing systems and high bandwidth networks across the main campus area.

Some of the issues that the UoB needs to address include:

- ▶ Complete the centralization and consolidation of IT
- ▶ Manage growth and increasing IT demand
- ▶ Demonstrate value through competitive, responsive and transparent services

**Global City Services (GCITS)**

GCITS is a global service provider which has grown through acquisition and which offers a wide range of services, including IT support, infrastructure and consulting. GCITS has mature and efficient IT service management processes, and holds an ISO/IEC 20000 certification.

GCITS provides the entire infrastructure and some cloud services for DriveYou.com, as well as a range of services in different countries to CruiseAlong Cars. Some of the issues that GCITS needs to address include:

- ▶ Succeed in establishing a strategic partnership with CruiseAlong Cars Nevagon State Department of Transportation (NSDoT)

NSDot is a government agency in the US state of Nevagon, where DriveYou.com is running their trials. It is responsible for managing transportation systems and safety. DriveYou.com must work with the agency to ensure that their trials comply with safety regulations, and the program includes bi0directional sharing of large amounts of data.

The NSDoT's internal IT team writes and manages most of their agency-specific applications, however most other applications and infrastructure are provided by



the Nevagon State central IT department.

The IT department at the UoB does not have a service catalogue or a service portfolio, and there is limited understanding of the structure and value of services in the organization. Many of the individual departments and faculties are resistant to the CIO's vision for global services.

They have decided to appoint business relationship managers (BRMs) who will be expected to address many of the challenges, in order to support collaboration and help to define global services. Some business analysts are going to be transferred to these new positions.

Which is the BEST way for a new BRM at the UoB to understand their customers' needs?

- A. Run a workshop to define the structure and value of IT services.
- B. Visit each customer in their normal place of work to see what they do.
- C. Issue a detailed questionnaire to all customers to discover their expectations.
- D. Establish current performance levels and match the new service to them.

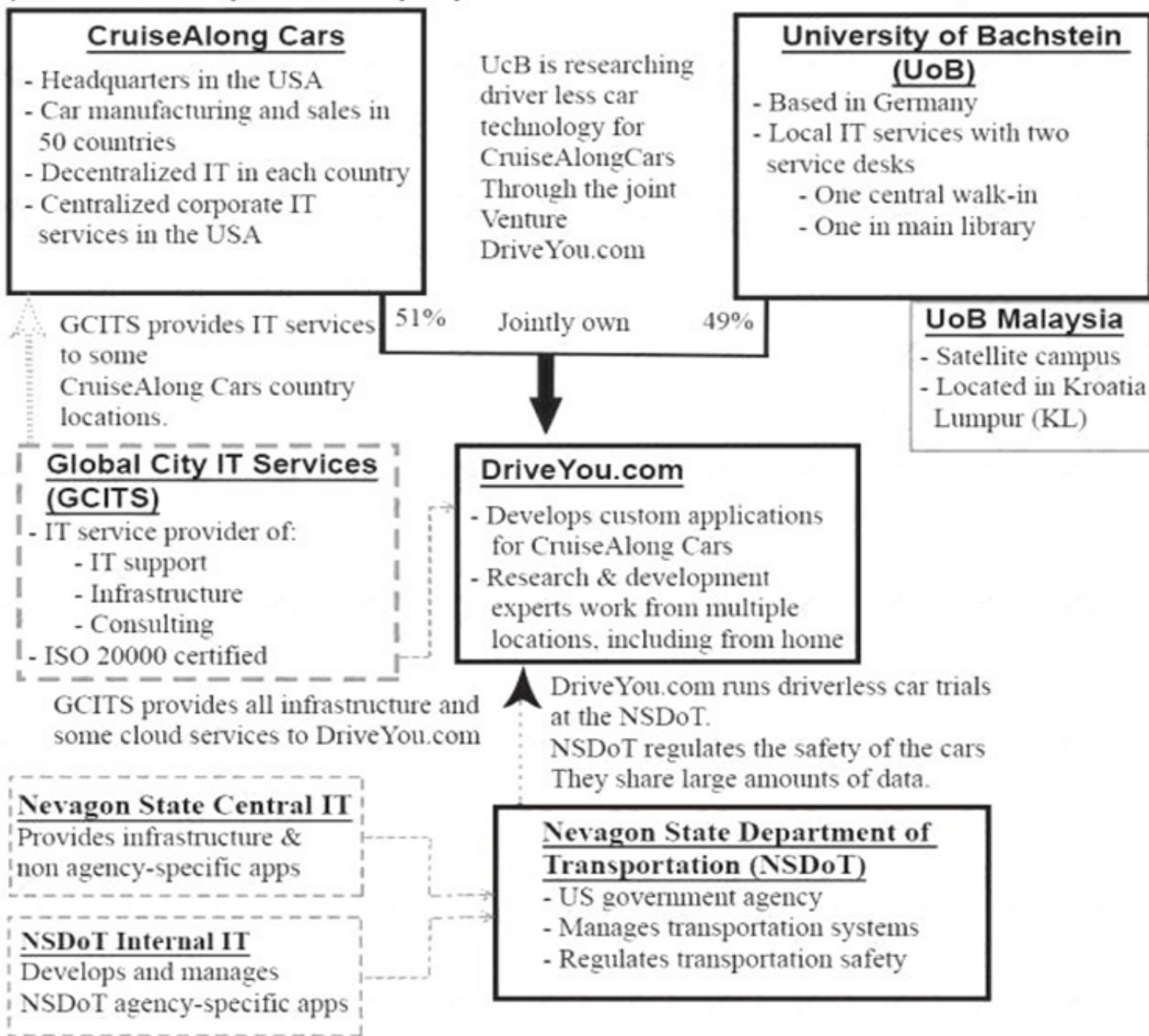
**Answer: D**

#### NEW QUESTION 4

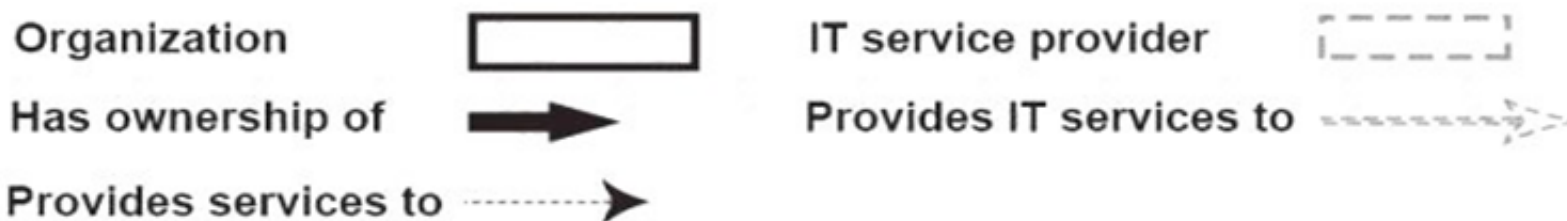
See the scenario for additional informational.

#### Scenario:

(Note: The companies and people within the scenario are fictional)



#### Legend



#### CruiseAlong Cars

CruiseAlong Cars is a car manufacturing and sales company with corporate headquarters in the United States of America. It has grown by acquisition over the last 20 years and has operations in over 50 countries. Each country has its own IT organization, with some central corporate IT services provided by the US parent company. In some countries CruiseAlong Cars has outsourced infrastructure and service desks. The largest IT supplier is Global City IT Services (GCITS). In two countries GCITS provides CruiseAlong Cars with full outsourced services. They also provide selected services in other countries.

Some of the issues that CruiseAlong Cars needs to address include:

- ▶ Inefficiencies caused by the current IT structure
- ▶ Inconsistency of IT services when employees are travelling

CruiseAlong Cars is working with a European university (the University of Bachstein) to research and develop driverless car technology. The venture operates as an independent company called DriveYou.com, and CruiseAlong Cars owns a 51% share.

#### DriveYou.com

This is a small, innovative company, that is jointly owned by CruiseAlong Cars and the University of Bachstein

(UoB). DriveYou.com develops custom applications using a highly collaborative, rapid and iterative development approach. Their employees are mostly research

and development experts, working from multiple locations, with a significant number working from home. Initial driverless car testing is being conducted in the US at the Nevegon State Department of Transportation.

Infrastructure and cloud services are purchased from Global City IT Services and other providers, and these relationships are managed by a DriveYou.com supplier manager.

Some of the issues that DriveYou.com needs to address include:

Better structure and accountability around their work practices Compliance with safety and other regulatory requirements.

University of Bachstein (UoB)

The UoB is a university that is based Germany, with a satellite campus in Kuala Lumpur, Malaysia. In the past, some IT services were funded and run centrally, and some were funded and run independently by each faculty. Centrally owned services include a 'walk-in' service desk, plus a separate service desk in the main library, run by library staff. Library services and IT are both part of the university's administrative services division. Recently, under a new CIO, there has been a drive to centralize and consolidate IT as a corporate function, although this has not been fully achieved.

The central IT department runs a variety of legacy systems, which serve students, administrators, researchers and academics. It also runs some high performance computing systems and high bandwidth networks across the main campus area.

Some of the issues that the UoB needs to address include:

- ▶ Complete the centralization and consolidation of IT
- ▶ Manage growth and increasing IT demand
- ▶ Demonstrate value through competitive, responsive and transparent services

Global City Services (GCITS)

GCITS is a global service provider which has grown through acquisition and which offers a wide range of services, including IT support, infrastructure and consulting. GCITS has mature and efficient IT service management processes, and holds an ISO/IEC 20000 certification.

GCITS provides the entire infrastructure and some cloud services for DriveYou.com, as well as a range of services in different countries to CruiseAlong Cars. Some of the issues that GCITS needs to address include:

- ▶ Succeed in establishing a strategic partnership with CruiseAlong Cars

Nevagon State Department of Transportation (NSDoT)

NSDot is a government agency in the US state of Nevagon, where DriveYou.com is running their trials. It is responsible for managing transportation systems and safety. DriveYou.com must work with the agency to ensure that their trials comply with safety regulations, and the program includes bi0directional sharing of large amounts of data.

The NSDoT's internal IT team writes and manages most of their agency-specific applications, however most other applications and infrastructure are provided by the Nevagon State central IT department.

CruiseAlong Cars is planning to improve the provision and support of IT services for senior executives who travel. They will deploy new mobile technology to enhance the user experience. They will also improve the incident management and request fulfilment processes and standardize these across service desks.

They are taking an iterative approach and have released the first iteration of improvements. A project manager has been appointed for this improvement initiative.

Some KPIs have been defined to assess the 'did we get there?' step of the CSI approach. Two of these are:

KPIs
25% reduction in security audit compliance failures for the mobile service over the last year
50% reduction in the number of mobile service related incidents over the last three months

Are these KPIs SMART?

- A. No, because one of them is not relevant to the project goals.
- B. No, because one of them is not time-bound.
- C. Yes, they are SMART KPIs.
- D. No, because one of them is not measurable

**Answer: C**

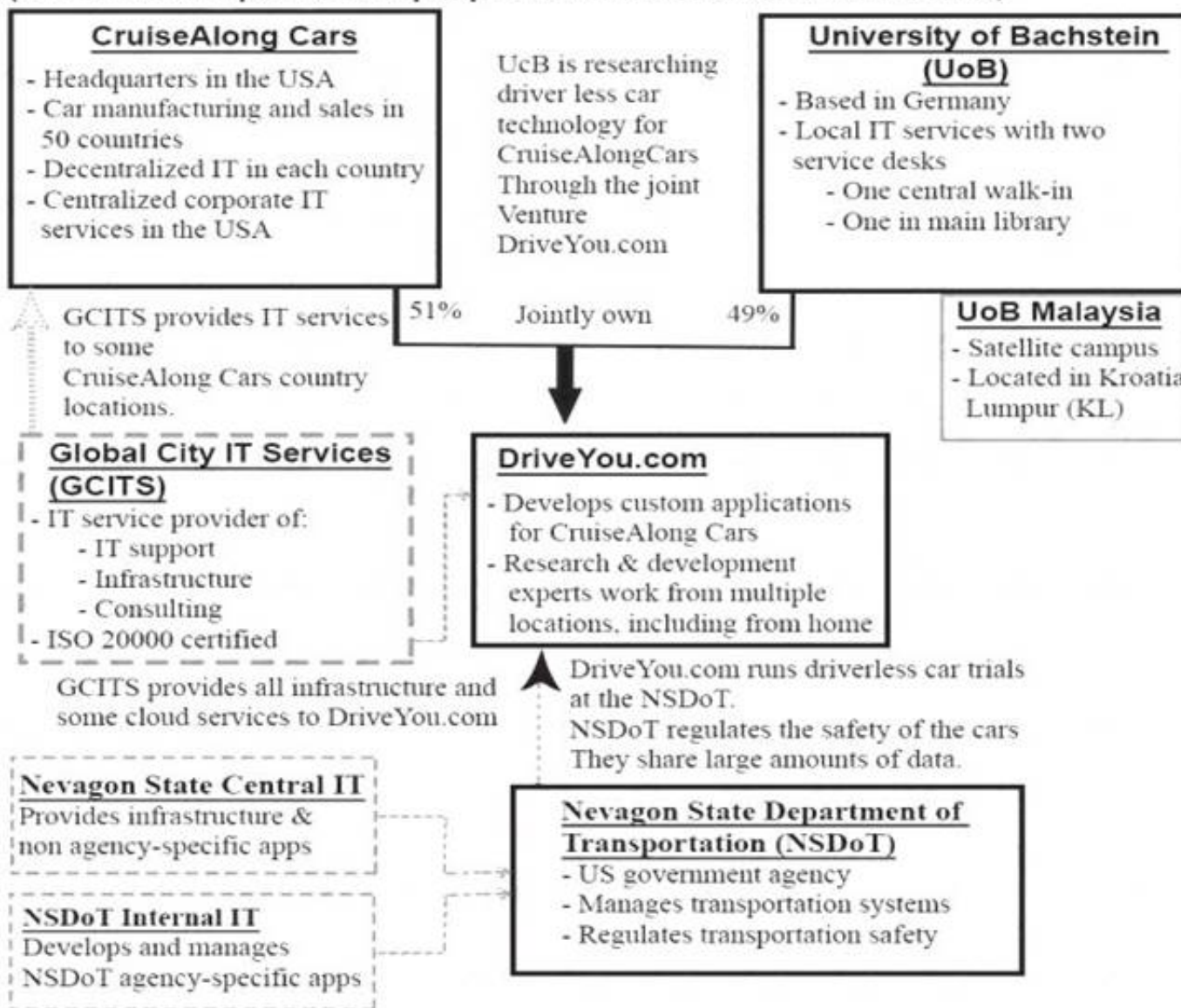
#### NEW QUESTION 5

See the Scenario for additional information.

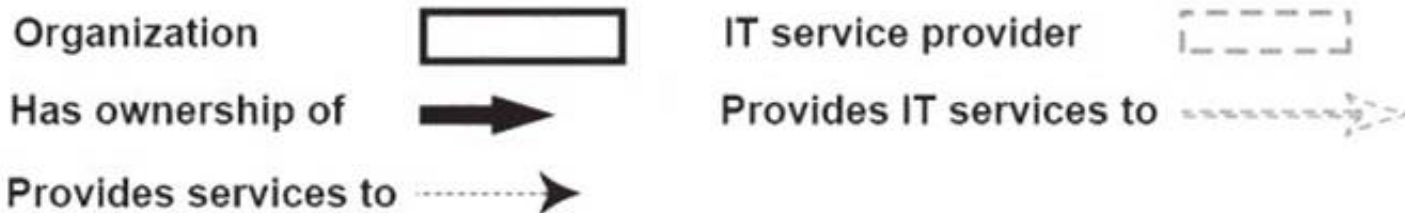


**Scenario:**

(Note: The companies and people within the scenario are fictional)



**Legend**



**CruiseAlong Cars**

CruiseAlong Cars is a car manufacturing and sales company with corporate headquarters in the United States of America. It has grown by acquisition over the last 20 years and has operations in over 50 countries. Each country has its own IT organization, with some central corporate IT services provided by the US parent company. In some countries CruiseAlong Cars has outsourced infrastructure and service desks. The largest IT supplier is Global City IT Services (GCITS). In two countries GCITS provides CruiseAlong Cars with full outsourced services. They also provide selected services in other countries.

Some of the issues that CruiseAlong Cars needs to address include:

- ▶ Inefficiencies caused by the current IT structure
- ▶ Inconsistency of IT services when employees are travelling

CruiseAlong Cars is working with a European university (the University of Bachstein) to research and develop driverless car technology. The venture operates as an independent company called DriveYou.com, and CruiseAlong Cars owns a 51% share.

**DriveYou.com**

This is a small, innovative company, that is jointly owned by CruiseAlong Cars and the University of Bachstein

(UoB). DriveYou.com develops custom applications using a highly collaborative, rapid and iterative development approach. Their employees are mostly research and development experts, working from multiple locations, with a significant number working from home. Initial driverless car testing is being conducted in the US at the Nevagon State Department of Transportation.

Infrastructure and cloud services are purchased from Global City IT Services and other providers, and these relationships are managed by a DriveYou.com supplier manager.

Some of the issues that DriveYou.com needs to address include:

- ▶ Better structure and accountability around their work practices
- ▶ Compliance with safety and other regulatory requirements.

**University of Bachstein (UoB)**

The UoB is a university that is based Germany, with a satellite campus in Kuala Lumpur, Malaysia. In the past, some IT services were funded and run centrally, and some were funded and run independently by each faculty. Centrally owned services include a 'walk-in' service desk, plus a separate service desk in the main library, run by library staff. Library services and IT are both part of the university's administrative services division. Recently, under a new CIO, there has been a drive to centralize and consolidate IT as a corporate function, although this has not been fully achieved.

The central IT department runs a variety of legacy systems, which serve students, administrators, researchers and academics. It also runs some high performance computing systems and high bandwidth networks across the main campus area.

Some of the issues that the UoB needs to address include: Complete the centralization and consolidation of IT Manage growth and increasing IT demand

Demonstrate value through competitive, responsive and transparent services Global City Services (GCITS)

GCITS is a global service provider which has grown through acquisition and which offers a wide range of services, including IT support, infrastructure and consulting. GCITS has mature and efficient IT service management processes, and holds an ISO/IEC 20000 certification.

GCITS provides the entire infrastructure and some cloud services for DriveYou.com, as well as a range of services in different countries to CruiseAlong Cars. Some of the issues that GCITS needs to address include:

- ▶ Succeed in establishing a strategic partnership with CruiseAlong Cars

**Nevagon State Department of Transportation (NSDoT)**

NSDot is a government agency in the US state of Nevagon, where DriveYou.com is running their trials. It is responsible for managing transportation systems and safety. DriveYou.com must work with the agency to ensure that their trials comply with safety regulations, and the program includes bi0directional sharing of large

amounts of data.

The NSDoT's internal IT team writes and manages most of their agency-specific applications, however most other applications and infrastructure are provided by the Nevagon State central IT department.

GCITS will create a new 'global mobile VIP service' for CruiseAlong Cars senior executives, which will give them access to corporate IT services from mobile devices, from any location. The new service will be delivered by the existing GCITS centralized service desk. It will include 24/7 support, and reported incidents and requests will be treated as a high priority.

GCITS has subcontracted global mobile network access to Mobilwork, an international telecom provider. Which two rows show the CORRECT use of OCM techniques in the global mobile VIP project?

	CSI step	OCM Technique	Key Stakeholder
1	<i>What is the vision?</i>	Sponsor management	GCITS Senior executives
2	<i>Where are we now?</i>	Training needs analysis	Mobilwork staff
3	<i>Where do we want to be?</i>	Identity resistance	GCITS staff
4	<i>How do we keep the momentum going?</i>	Reinforcement	GCITS Service desk staff

- A. 1 and 2.
- B. 2 and 3.
- C. 3 and 4.
- D. 1 and 4.

**Answer: D**

#### NEW QUESTION 6

See the scenario for additional informational.

##### CruiseAlong Cars

CruiseAlong Cars is a car manufacturing and sales company with corporate headquarters in the United States of America. It has grown by acquisition over the last 20 years and has operations in over 50 countries. Each country has its own IT organization, with some central corporate IT services provided by the US parent company. In some countries CruiseAlong Cars has outsourced infrastructure and service desks. The largest IT supplier is Global City IT Services (GCITS). In two countries GCITS provides CruiseAlong Cars with full outsourced services. They also provide selected services in other countries.

Some of the issues that CruiseAlong Cars needs to address include:

- ▶ Inefficiencies caused by the current IT structure
- ▶ Inconsistency of IT services when employees are travelling

CruiseAlong Cars is working with a European university (the University of Bachstein) to research and develop driverless car technology. The venture operates as an independent company called DriveYou.com, and CruiseAlong Cars owns a 51% share.

##### DriveYou.com

This is a small, innovative company, that is jointly owned by CruiseAlong Cars and the University of Bachstein (UoB). DriveYou.com develops custom applications using a highly collaborative, rapid and iterative development approach. Their employees are mostly research and development experts, working from multiple locations, with a significant number working from home. Initial driverless car testing is being conducted in the US at the Nevegon State Department of Transportation.

Infrastructure and cloud services are purchased from Global City IT Services and other providers, and these relationships are managed by a DriveYou.com supplier manager.

Some of the issues that DriveYou.com needs to address include:

- ▶ Better structure and accountability around their work practices
- ▶ Compliance with safety and other regulatory requirements.

##### University of Bachstein (UoB)

The UoB is a university that is based Germany, with a satellite campus in Kuala Lumpur, Malaysia. In the past, some IT services were funded and run centrally, and some were funded and run independently by each faculty. Centrally owned services include a 'walk-in' service desk, plus a separate service desk in the main library, run by library staff. Library services and IT are both part of the university's administrative services division. Recently, under a new CIO, there has been a drive to centralize and consolidate IT as a corporate function, although this has not been fully achieved.

The central IT department runs a variety of legacy systems, which serve students, administrators, researchers and academics. It also runs some high performance computing systems and high bandwidth networks across the main campus area.

Some of the issues that the UoB needs to address include:

- ▶ Complete the centralization and consolidation of IT
- ▶ Manage growth and increasing IT demand
- ▶ Demonstrate value through competitive, responsive and transparent services

##### Global City Services (GCITS)

GCITS is a global service provider which has grown through acquisition and which offers a wide range of services, including IT support, infrastructure and consulting. GCITS has mature and efficient IT service management processes, and holds an ISO/IEC 20000 certification.

GCITS provides the entire infrastructure and some cloud services for DriveYou.com, as well as a range of services in different countries to CruiseAlong Cars. Some of the issues that GCITS needs to address include:

- ▶ Succeed in establishing a strategic partnership with CruiseAlong Cars

##### Nevagon State Department of Transportation (NSDoT)

NSDot is a government agency in the US state of Nevagon, where DriveYou.com is running their trials. It is responsible for managing transportation systems and safety. DriveYou.com must work with the agency to ensure that their trials comply with safety regulations, and the program includes bi0directional sharing of large amounts of data.

The NSDoT's internal IT team writes and manages most of their agency-specific applications, however most other applications and infrastructure are provided by the Nevagon State central IT department.

CruiseAlong Cars is planning to improve the provision and support of IT services for senior executives who travel. They will deploy new mobile technology to enhance the user experience. They will also improve the incident management and request fulfilment processes and standardize these across service desks.

They are taking an iterative approach and have released the first iteration of improvements. A project manager has been appointed for this improvement initiative. The project manager is trying to understand the current level of service provided to senior executives. Which is an example of a CSF for the 'customer' quadrant of the balanced scorecard?



- A. Customer satisfaction with operational services.
- B. Ability to respond rapidly to customer demand for change.
- C. Stability and availability of services delivered to customers.
- D. Ability to resolve customer incidents quickly and effectively.

**Answer: C**

#### NEW QUESTION 7

See the Scenario for additional information.

##### CruiseAlong Cars

CruiseAlong Cars is a car manufacturing and sales company with corporate headquarters in the United States of America. It has grown by acquisition over the last 20 years and has operations in over 50 countries. Each country has its own IT organization, with some central corporate IT services provided by the US parent company. In some countries CruiseAlong Cars has outsourced infrastructure and service desks. The largest IT supplier is Global City IT Services (GCITS). In two countries GCITS provides CruiseAlong Cars with full outsourced services. They also provide selected services in other countries.

Some of the issues that CruiseAlong Cars needs to address include: Inefficiencies caused by the current IT structure

Inconsistency of IT services when employees are travelling

CruiseAlong Cars is working with a European university (the University of Bachstein) to research and develop driverless car technology. The venture operates as an independent company called DriveYou.com, and CruiseAlong Cars owns a 51% share. DriveYou.com

This is a small, innovative company, that is jointly owned by CruiseAlong Cars and the University of Bachstein

(UoB). DriveYou.com develops custom applications using a highly collaborative, rapid and iterative development approach. Their employees are mostly research and development experts, working from multiple locations, with a significant number working from home. Initial driverless car testing is being conducted in the US at the Nevegon State Department of Transportation.

Infrastructure and cloud services are purchased from Global City IT Services and other providers, and these relationships are managed by a DriveYou.com supplier manager.

Some of the issues that DriveYou.com needs to address include:

- ▶ Better structure and accountability around their work practices
- ▶ Compliance with safety and other regulatory requirements.

##### University of Bachstein (UoB)

The UoB is a university that is based Germany, with a satellite campus in Kuala Lumpur, Malaysia. In the past, some IT services were funded and run centrally, and some were funded and run independently by each faculty. Centrally owned services include a 'walk-in' service desk, plus a separate service desk in the main library, run by library staff. Library services and IT are both part of the university's administrative services division. Recently, under a new CIO, there has been a drive to centralize and consolidate IT as a corporate function, although this has not been fully achieved.

The central IT department runs a variety of legacy systems, which serve students, administrators, researchers and academics. It also runs some high performance computing systems and high bandwidth networks across the main campus area.

Some of the issues that the UoB needs to address include:

- ▶ Complete the centralization and consolidation of IT
- ▶ Manage growth and increasing IT demand
- ▶ Demonstrate value through competitive, responsive and transparent services

##### Global City Services (GCITS)

GCITS is a global service provider which has grown through acquisition and which offers a wide range of services, including IT support, infrastructure and consulting. GCITS has mature and efficient IT service management processes, and holds an ISO/IEC 20000 certification.

GCITS provides the entire infrastructure and some cloud services for DriveYou.com, as well as a range of services in different countries to CruiseAlong Cars. Some of the issues that GCITS needs to address include:

- ▶ Succeed in establishing a strategic partnership with CruiseAlong Cars

##### Nevagon State Department of Transportation (NSDoT)

NSDot is a government agency in the US state of Nevagon, where DriveYou.com is running their trials. It is responsible for managing transportation systems and safety. DriveYou.com must work with the agency to ensure that their trials comply with safety regulations, and the program includes bi0directional sharing of large amounts of data.

The NSDoT's internal IT team writes and manages most of their agency-specific applications, however most other applications and infrastructure are provided by the Nevagon State central IT department.

CruiseAlong Cars is planning to improve the provision and support of IT services for senior executives who travel. They will deploy new mobile technology to enhance the user experience. They will also improve the incident management and request fulfilment processes and standardize these across service desks.

They are taking an iterative approach and have released the first iteration of improvements. A project manager has been appointed for this improvement initiative.

One CSF for the project is to provide an improved service to senior executives. Which two KPIs are BEST to underpin this CSF?

	KPIs
1	Increased end-to-end availability of the new mobile technology
2	Improved senior executive satisfaction at incident closure
3	Reduction in costs for the provision of mobile services
4	Improved availability of servers within the data centre

- A. 1 and 2.
- B. 2 and 3.
- C. 3 and 4.
- D. 1 and 4.

**Answer: A**

#### NEW QUESTION 8



The improvement initiative has been running for a year and the BRMs believe it has been successful. What is the BEST way to demonstrate its success?

- A. By completing a benefits realization review.
- B. By facilitating a customer service review workshop.
- C. By conducting a service catalogue gap analysis.
- D. By undertaking a stakeholder review analysis.

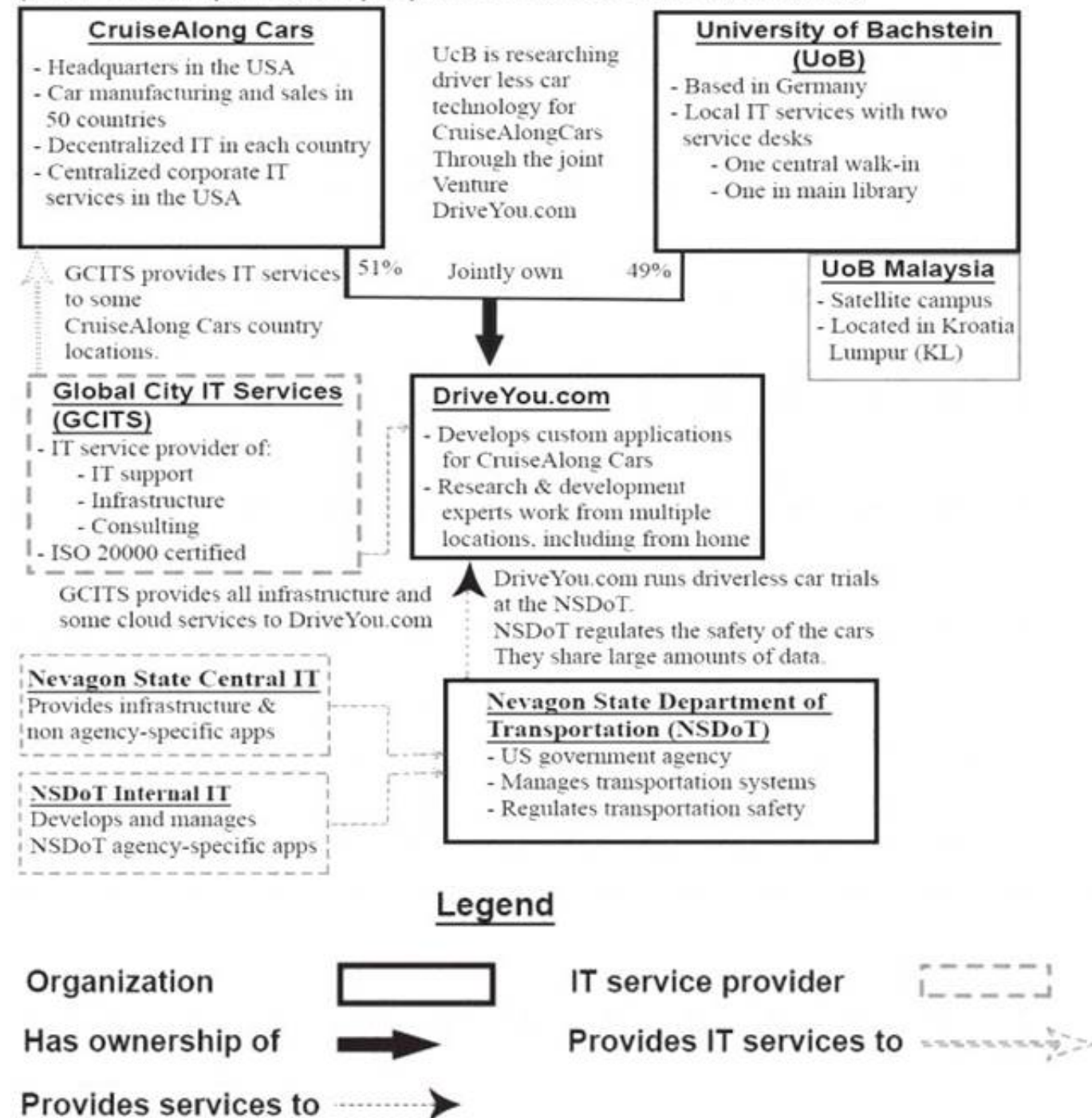
Answer: C

#### NEW QUESTION 9

See the Scenario for additional information.

**Scenario:**

(Note: The companies and people within the scenario are fictional)



#### CruiseAlong Cars

CruiseAlong Cars is a car manufacturing and sales company with corporate headquarters in the United States of America. It has grown by acquisition over the last 20 years and has operations in over 50 countries. Each country has its own IT organization, with some central corporate IT services provided by the US parent company. In some countries CruiseAlong Cars has outsourced infrastructure and service desks. The largest IT supplier is Global City IT Services (GCITS). In two countries GCITS provides CruiseAlong Cars with full outsourced services. They also provide selected services in other countries.

Some of the issues that CruiseAlong Cars needs to address include: Inefficiencies caused by the current IT structure

Inconsistency of IT services when employees are travelling

CruiseAlong Cars is working with a European university (the University of Bachstein) to research and develop driverless car technology. The venture operates as an independent company called DriveYou.com, and CruiseAlong Cars owns a 51% share.

#### DriveYou.com

This is a small, innovative company, that is jointly owned by CruiseAlong Cars and the University of Bachstein (UoB). DriveYou.com develops custom applications using a highly collaborative, rapid and iterative development approach. Their employees are mostly research and development experts, working from multiple locations, with a significant number working from home. Initial driverless car testing is being conducted in the

US at the Nevegon State Department of Transportation.

Infrastructure and cloud services are purchased from Global City IT Services and other providers, and these relationships are managed by a DriveYou.com supplier manager.

Some of the issues that DriveYou.com needs to address include:

- ▶ Better structure and accountability around their work practices
- ▶ Compliance with safety and other regulatory requirements.

#### University of Bachstein (UoB)

The UoB is a university that is based Germany, with a satellite campus in Kuala Lumpur, Malaysia. In the past, some IT services were funded and run centrally, and some were funded and run independently by each faculty. Centrally owned services include a 'walk-in' service desk, plus a separate service desk in the main library, run by library staff. Library services and IT are both part of the university's administrative services division. Recently, under a new CIO, there has been a drive to centralize and consolidate IT as a corporate function, although this has not been fully achieved.

The central IT department runs a variety of legacy systems, which serve students, administrators, researchers and academics. It also runs some high performance computing systems and high bandwidth networks across the main campus area.

Some of the issues that the UoB needs to address include:

- ▶

Complete the centralization and consolidation of IT

- ▶ Manage growth and increasing IT demand
- ▶ Demonstrate value through competitive, responsive and transparent services

Global City Services (GCITS)

GCITS is a global service provider which has grown through acquisition and which offers a wide range of services, including IT support, infrastructure and consulting. GCITS has mature and efficient IT service management processes, and holds an ISO/IEC 20000 certification.

GCITS provides the entire infrastructure and some cloud services for DriveYou.com, as well as a range of services in different countries to CruiseAlong Cars. Some of the issues that GCITS needs to address include:

- ▶ Succeed in establishing a strategic partnership with CruiseAlong Cars

Nevagon State Department of Transportation (NSDoT)

NSDot is a government agency in the US state of Nevagon, where DriveYou.com is running their trials. It is responsible for managing transportation systems and safety. DriveYou.com must work with the agency to ensure that their trials comply with safety regulations, and the program includes bi0directional sharing of large amounts of data.

The NSDoT's internal IT team writes and manages most of their agency-specific applications, however most other applications and infrastructure are provided by the Nevagon State central IT department.

GCITS will create a new 'global mobile VIP service' for CruiseAlong Cars senior executives, which will give them access to corporate IT services from mobile devices, from any location. The new service will be delivered by the existing GCITS centralized service desk. It will include 24/7 support, and reported incidents and requests will be treated as a high priority.

GCITS has subcontracted global mobile network access to Mobilwork, an international telecom provider. During the 'how do we get there? Step, a plan will be created for implementing changes to the service desk procedures. Some issues with the service desk staff are anticipated.

Which OCM activity is the BEST to address the relevant service desk issue?

	Service desk issue	OCM activity
a)	Inconsistent engagement in the project	Create a plan for regular measurement and reporting
b)	Poorly defined roles and responsibilities for the new procedures	Conduct a training needs analysis
c)	Resistance to using the new procedures	Invite users to share success stories
d)	Lack of training for the new service and procedures	Implement a staff reward scheme

A. Service desk issue: Inconsistent engagement in the project OCM activity: Create a plan for regular measurement and reporting

B. Service desk issue: Poorly defined roles and responsibilities for the new procedures OCM activity: Conduct a training needs analysis

C. Service desk issue: Resistance to using new procedures OCM activity: Invite users to share success stories

D. Service desk issue: Lack of training for the new service and procedures OCM activity: Implement a staff reward scheme

**Answer: A**

## NEW QUESTION 10

See the scenario for additional informational.

CruiseAlong Cars

CruiseAlong Cars is a car manufacturing and sales company with corporate headquarters in the United States of America. It has grown by acquisition over the last 20 years and has operations in over 50 countries. Each country has its own IT organization, with some central corporate IT services provided by the US parent company. In some countries CruiseAlong Cars has outsourced infrastructure and service desks. The largest IT supplier is Global City IT Services (GCITS). In two countries GCITS provides CruiseAlong Cars with full outsourced services. They also provide selected services in other countries.

Some of the issues that CruiseAlong Cars needs to address include:

- ▶ Inefficiencies caused by the current IT structure
- ▶ Inconsistency of IT services when employees are travelling

CruiseAlong Cars is working with a European university (the University of Bachstein) to research and develop driverless car technology. The venture operates as an independent company called DriveYou.com, and CruiseAlong Cars owns a 51% share.

DriveYou.com

This is a small, innovative company, that is jointly owned by CruiseAlong Cars and the University of Bachstein

(UoB). DriveYou.com develops custom applications using a highly collaborative, rapid and iterative development approach. Their employees are mostly research and development experts, working from multiple locations, with a significant number working from home. Initial driverless car testing is being conducted in the US at the Nevegon State Department of Transportation.

Infrastructure and cloud services are purchased from Global City IT Services and other providers, and these relationships are managed by a DriveYou.com supplier manager.

Some of the issues that DriveYou.com needs to address include:

Better structure and accountability around their work practices Compliance with safety and other regulatory requirements.

University of Bachstein (UoB)

The UoB is a university that is based Germany, with a satellite campus in Kuala Lumpur, Malaysia. In the past, some IT services were funded and run centrally, and some were funded and run independently by each faculty. Centrally owned services include a 'walk-in' service desk, plus a separate service desk in the main library, run by library staff. Library services and IT are both part of the university's administrative services division. Recently, under a new CIO, there has been a drive to centralize and consolidate IT as a corporate function, although this has not been fully achieved.

The central IT department runs a variety of legacy systems, which serve students, administrators, researchers and academics. It also runs some high performance computing systems and high bandwidth networks across the main campus area.

Some of the issues that the UoB needs to address include:

- ▶ Complete the centralization and consolidation of IT
- ▶ Manage growth and increasing IT demand
- ▶ Demonstrate value through competitive, responsive and transparent services

Global City Services (GCITS)

GCITS is a global service provider which has grown through acquisition and which offers a wide range of services, including IT support, infrastructure and consulting. GCITS has mature and efficient IT service management processes, and holds an ISO/IEC 20000 certification.

GCITS provides the entire infrastructure and some cloud services for DriveYou.com, as well as a range of services in different countries to CruiseAlong Cars. Some



of the issues that GCITS needs to address include:

- Succeed in establishing a strategic partnership with CruiseAlong Cars

Nevagon State Department of Transportation (NSDoT)

NSDot is a government agency in the US state of Nevagon, where DriveYou.com is running their trials. It is responsible for managing transportation systems and safety. DriveYou.com must work with the agency to ensure that their trials comply with safety regulations, and the program includes bi0directional sharing of large amounts of data.

The NSDoT's internal IT team writes and manages most of their agency-specific applications, however most other applications and infrastructure are provided by the Nevagon State central IT department.

DriveYou.com decided to move the storage and management of their testing data to a new platform so that they can share it more effectively with the UoB. They also need to facilitate data transfer from new

CruiseAlong Cars research facilities in Japan and Australia.

The DriveYou.com project manager has set up an initial teleconference for the project, which will include the new research teams from CruiseAlong Cars.

How could the project manager ensure that 'verbal handshaking' is addressed?

- A. By ensuring that action points and next steps are clarified and agreed during the session.
- B. By organizing face-to-face meetings in advance to build rapport and personal contact.
- C. By requesting that all parties listen closely to discussions and do not speak over each other.
- D. By creating a digital recording to ensure that all the discussions are captured and can be reviewed.

**Answer: A**

#### NEW QUESTION 10

The project manager is writing a business case for the improvement. This business case explains how following the CSI approach will contribute to the improvement work.

Which is a correct description of the purpose of a CSI step in this improvement work?

- A. "Where are we now?" will document process issues that need to be resolved.
- B. 'How do we get there?' will specify the objectives and business case for the project.
- C. 'What is the vision?' will identify the best ITSM software tool to use.
- D. 'Did we get there?' will define measurable steps for the project.

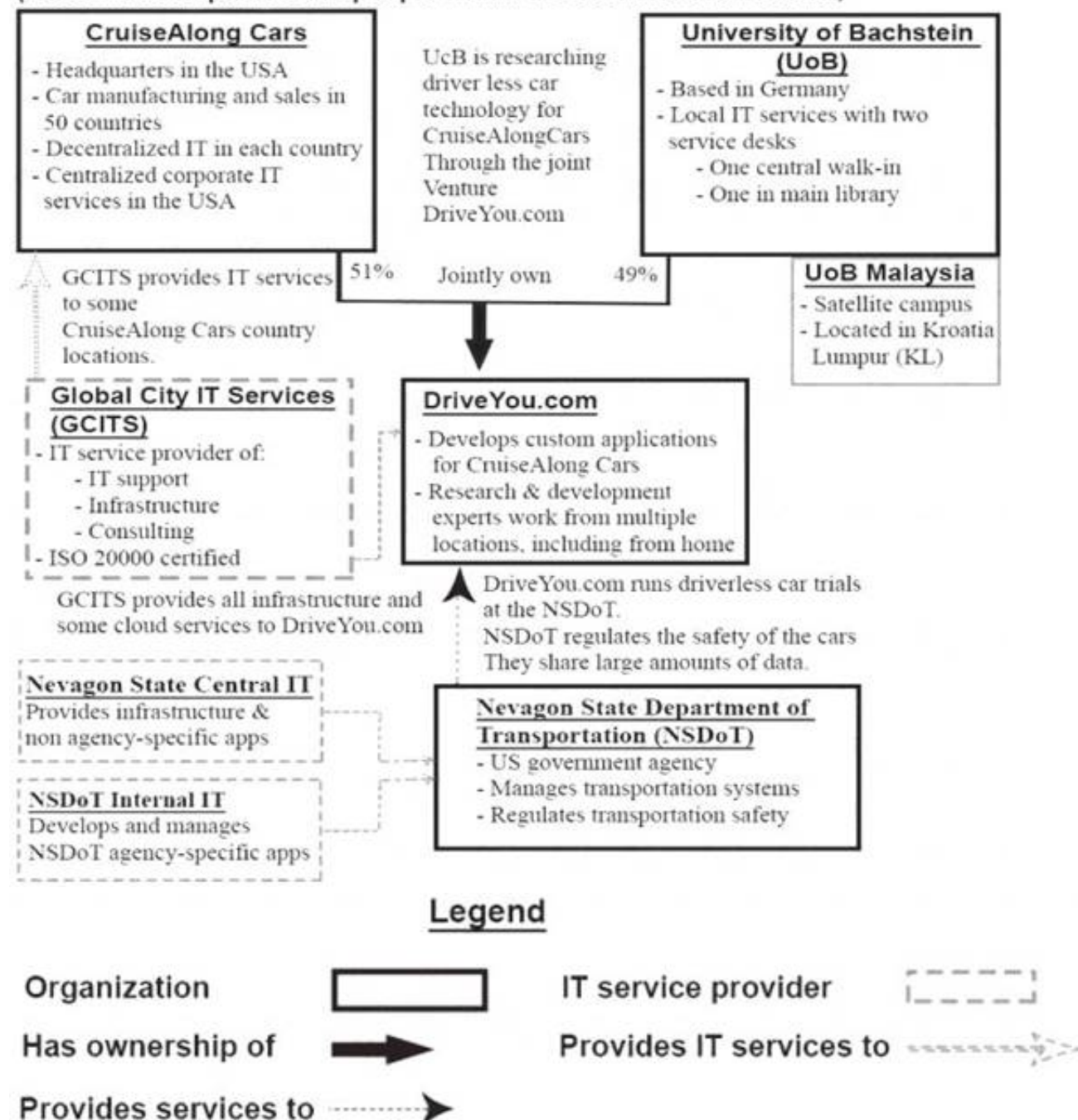
**Answer: A**

#### NEW QUESTION 11

See the Scenario for additional information.

**Scenario:**

(Note: The companies and people within the scenario are fictional)



CruiseAlong Cars

CruiseAlong Cars is a car manufacturing and sales company with corporate headquarters in the United States of America. It has grown by acquisition over the last 20 years and has operations in over 50 countries. Each country has its own IT organization, with some central corporate IT services provided by the US parent company. In some countries CruiseAlong Cars has outsourced infrastructure and service desks. The largest IT supplier is Global City IT Services (GCITS). In two countries GCITS provides CruiseAlong Cars with full outsourced services. They also provide selected services in other countries.



Some of the issues that CruiseAlong Cars needs to address include:

- ▶ Inefficiencies caused by the current IT structure
- ▶ Inconsistency of IT services when employees are travelling

CruiseAlong Cars is working with a European university (the University of Bachstein) to research and develop driverless car technology. The venture operates as an independent company called DriveYou.com, and CruiseAlong Cars owns a 51% share.

DriveYou.com

This is a small, innovative company, that is jointly owned by CruiseAlong Cars and the University of Bachstein (UoB). DriveYou.com develops custom applications using a highly collaborative, rapid and iterative development approach. Their employees are mostly research and development experts, working from multiple locations, with a significant number working from home. Initial driverless car testing is being conducted in the

US at the Nevegon State Department of Transportation.

Infrastructure and cloud services are purchased from Global City IT Services and other providers, and these relationships are managed by a DriveYou.com supplier manager.

Some of the issues that DriveYou.com needs to address include:

- ▶ Better structure and accountability around their work practices
- ▶ Compliance with safety and other regulatory requirements.

University of Bachstein (UoB)

The UoB is a university that is based Germany, with a satellite campus in Kuala Lumpur, Malaysia. In the past, some IT services were funded and run centrally, and some were funded and run independently by each faculty. Centrally owned services include a 'walk-in' service desk, plus a separate service desk in the main library, run by library staff. Library services and IT are both part of the university's administrative services division. Recently, under a new CIO, there has been a drive to centralize and consolidate IT as a corporate function, although this has not been fully achieved.

The central IT department runs a variety of legacy systems, which serve students, administrators, researchers and academics. It also runs some high performance computing systems and high bandwidth networks across the main campus area.

Some of the issues that the UoB needs to address include:

- ▶ Complete the centralization and consolidation of IT
- ▶ Manage growth and increasing IT demand
- ▶ Demonstrate value through competitive, responsive and transparent services

Global City Services (GCITS)

GCITS is a global service provider which has grown through acquisition and which offers a wide range of services, including IT support, infrastructure and consulting. GCITS has mature and efficient IT service management processes, and holds an ISO/IEC 20000 certification.

GCITS provides the entire infrastructure and some cloud services for DriveYou.com, as well as a range of services in different countries to CruiseAlong Cars. Some of the issues that GCITS needs to address include:

- ▶ Succeed in establishing a strategic partnership with CruiseAlong Cars

Nevagon State Department of Transportation (NSDoT)

NSDot is a government agency in the US state of Nevagon, where DriveYou.com is running their trials. It is responsible for managing transportation systems and safety. DriveYou.com must work with the agency to ensure that their trials comply with safety regulations, and the program includes bi0directional sharing of large amounts of data.

The NSDoT's internal IT team writes and manages most of their agency-specific applications, however most other applications and infrastructure are provided by the Nevagon State central IT department.

CruiseAlong Cars central IT organization wants to implement a new ITSM toolset to replace their outdated system. The new ITSM toolset will be used by all CruiseAlong Cars' IT departments and their service desks.

The business case for the improvement has not been made yet. This could include financial contribution from various countries. The overall goal of the initiative is to achieve efficiencies and cost reductions through the centralization of processes and data for reporting across country-based IT departments.

Which row of information BEST supports the business case?

A. Key stakeholders: Central IT CIO Selected country CIOs Baseline value: Time taken to produce weekly reports = 1 day Expected result: Time taken to produce weekly reports = 0.5 day

B. Key stakeholders: Central IT CIO All country CIOs Baseline value: Number of incorrectly categorized incidents per month = 50 Expected result: Number of incorrectly categorized incidents per month = 30

C. Key stakeholders: Central IT CIO Selected country CIOs Baseline value: Total IT headcount = 470 Expected result: Total IT headcount = 500

D. Key stakeholders: Central IT CIO All country CIOs Baseline value: Average cost per incident = \$12.50 Expected result: Average cost per incident = \$9.00

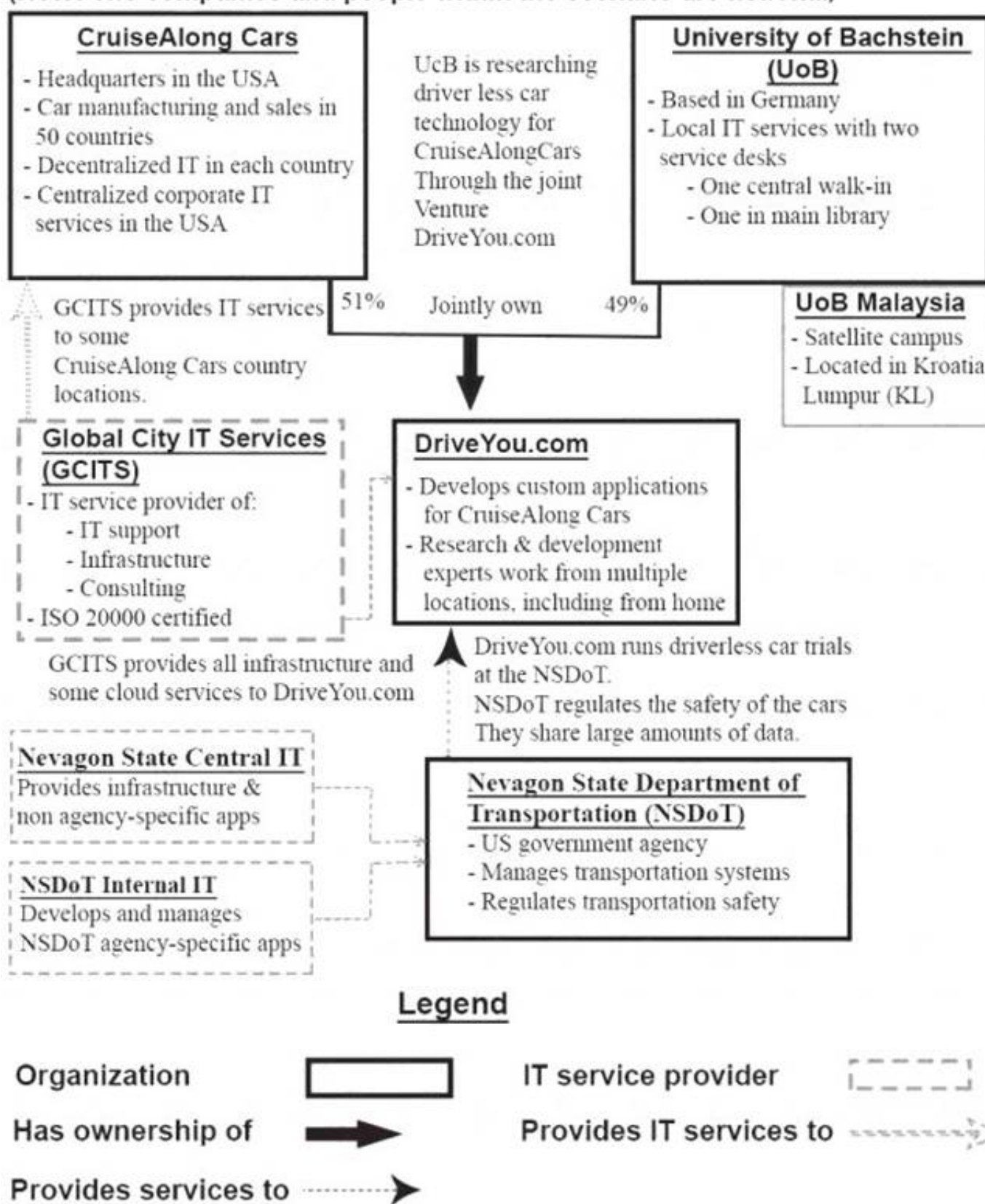
**Answer: D**

## NEW QUESTION 16

See the scenario for additional informational.

## Scenario:

(Note: The companies and people within the scenario are fictional)



### CruiseAlong Cars

CruiseAlong Cars is a car manufacturing and sales company with corporate headquarters in the United States of America. It has grown by acquisition over the last 20 years and has operations in over 50 countries. Each country has its own IT organization, with some central corporate IT services provided by the US parent company. In some countries CruiseAlong Cars has outsourced infrastructure and service desks. The largest IT supplier is Global City IT Services (GCITS). In two countries GCITS provides CruiseAlong Cars with full outsourced services. They also provide selected services in other countries.

Some of the issues that CruiseAlong Cars needs to address include:

- ▶ Inefficiencies caused by the current IT structure
- ▶ Inconsistency of IT services when employees are travelling

CruiseAlong Cars is working with a European university (the University of Bachstein) to research and develop driverless car technology. The venture operates as an independent company called DriveYou.com, and CruiseAlong Cars owns a 51% share.

### DriveYou.com

This is a small, innovative company, that is jointly owned by CruiseAlong Cars and the University of Bachstein (UoB). DriveYou.com develops custom applications using a highly collaborative, rapid and iterative development approach. Their employees are mostly research and development experts, working from multiple locations, with a significant number working from home. Initial driverless car testing is being conducted in the US at the Nevegon State Department of Transportation.

Infrastructure and cloud services are purchased from Global City IT Services and other providers, and these relationships are managed by a DriveYou.com supplier manager.

Some of the issues that DriveYou.com needs to address include:

Better structure and accountability around their work practices Compliance with safety and other regulatory requirements.

### University of Bachstein (UoB)

The UoB is a university that is based Germany, with a satellite campus in Kuala Lumpur, Malaysia. In the past, some IT services were funded and run centrally, and some were funded and run independently by each faculty.

Centrally owned services include a 'walk-in' service desk, plus a separate service desk in the main library, run by library staff. Library services and IT are both part of the university's administrative services division. Recently, under a new CIO, there has been a drive to centralize and consolidate IT as a corporate function, although this has not been fully achieved.

The central IT department runs a variety of legacy systems, which serve students, administrators, researchers and academics. It also runs some high performance computing systems and high bandwidth networks across the main campus area.

Some of the issues that the UoB needs to address include:

- ▶ Complete the centralization and consolidation of IT
- ▶ Manage growth and increasing IT demand
- ▶ Demonstrate value through competitive, responsive and transparent services



## Global City Services (GCITS)

GCITS is a global service provider which has grown through acquisition and which offers a wide range of services, including IT support, infrastructure and consulting. GCITS has mature and efficient IT service management processes, and holds an ISO/IEC 20000 certification.

GCITS provides the entire infrastructure and some cloud services for DriveYou.com, as well as a range of services in different countries to CruiseAlong Cars. Some of the issues that GCITS needs to address include:

- Succeed in establishing a strategic partnership with CruiseAlong Cars Nevagon State Department of Transportation (NSDoT)

NSDoT is a government agency in the US state of Nevagon, where DriveYou.com is running their trials. It is responsible for managing transportation systems and safety. DriveYou.com must work with the agency to ensure that their trials comply with safety regulations, and the program includes bi0directional sharing of large amounts of data.

The NSDoT's internal IT team writes and manages most of their agency-specific applications, however most other applications and infrastructure are provided by the Nevagon State central IT department.

The IT department at the UoB does not have a service catalogue or a service portfolio, and there is limited understanding of the structure and value of services in the organization. Many of the individual departments and faculties are resistant to the CIO's vision for global services.

They have decided to appoint business relationship managers (BRMs) who will be expected to address many of the challenges, in order to support collaboration and help to define global services. Some business analysts are going to be transferred to these new positions.

One of the BRMs has had an improvement idea for implementing a de-centralized support model that can be actioned quickly. The BRM proposed implementing the improvement in the next three months. The improvement was rejected by the CIO who has suggested that the idea should never have been proposed.

Which tool should the BRM have used to predict the CIO's response at this early stage?

- The CSI register, to properly define the timescale for implementation.
- The CSI register, to define who the improvement would be actioned by.
- The orientation worksheet, to understand the organizational vision.
- The orientation worksheet, to measure the success of the improvement.

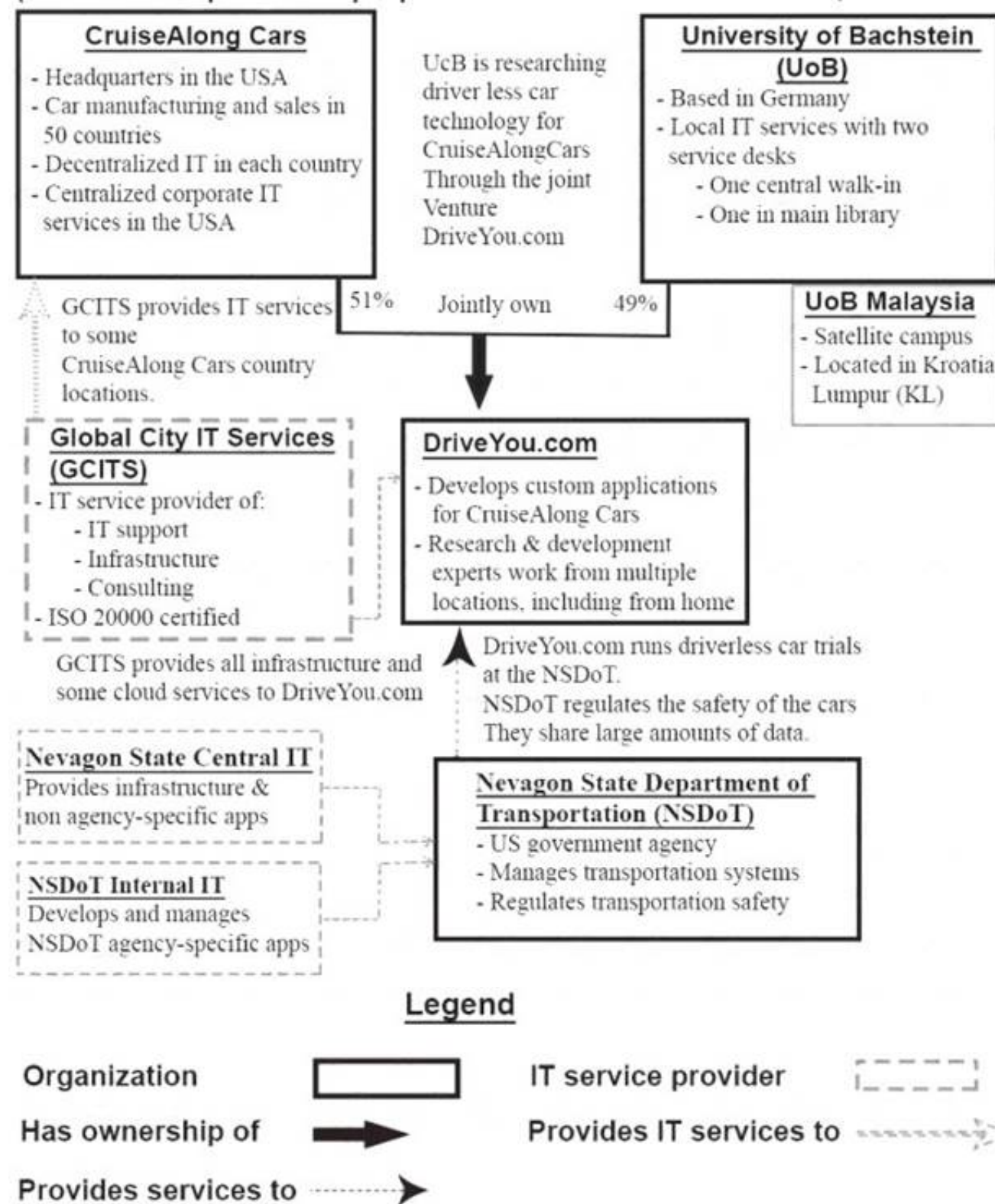
Answer: B

## NEW QUESTION 18

See the Scenario for additional information.

### Scenario:

(Note: The companies and people within the scenario are fictional)



### CruiseAlong Cars

CruiseAlong Cars is a car manufacturing and sales company with corporate headquarters in the United States of America. It has grown by acquisition over the last 20 years and has operations in over 50 countries. Each country has its own IT organization, with some central corporate IT services provided by the US parent company. In some countries CruiseAlong Cars has outsourced infrastructure and service desks. The largest IT supplier is Global City IT Services (GCITS). In two countries GCITS provides CruiseAlong Cars with full outsourced services. They also provide selected services in other countries.

Some of the issues that CruiseAlong Cars needs to address include:



- ▶ Inefficiencies caused by the current IT structure

- ▶ Inconsistency of IT services when employees are travelling

CruiseAlong Cars is working with a European university (the University of Bachstein) to research and develop driverless car technology. The venture operates as an independent company called DriveYou.com, and CruiseAlong Cars owns a 51% share.

DriveYou.com

This is a small, innovative company, that is jointly owned by CruiseAlong Cars and the University of Bachstein (UoB). DriveYou.com develops custom applications using a highly collaborative, rapid and iterative development approach. Their employees are mostly research and development experts, working from multiple locations, with a significant number working from home. Initial driverless car testing is being conducted in the

US at the Nevegon State Department of Transportation.

Infrastructure and cloud services are purchased from Global City IT Services and other providers, and these relationships are managed by a DriveYou.com supplier manager.

Some of the issues that DriveYou.com needs to address include:

- ▶ Better structure and accountability around their work practices

- ▶ Compliance with safety and other regulatory requirements.

University of Bachstein (UoB)

The UoB is a university that is based Germany, with a satellite campus in Kuala Lumpur, Malaysia. In the past, some IT services were funded and run centrally, and some were funded and run independently by each faculty. Centrally owned services include a 'walk-in' service desk, plus a separate service desk in the main library, run by library staff. Library services and IT are both part of the university's administrative services division. Recently, under a new CIO, there has been a drive to centralize and consolidate IT as a corporate function, although this has not been fully achieved.

The central IT department runs a variety of legacy systems, which serve students, administrators, researchers and academics. It also runs some high performance computing systems and high bandwidth networks across the main campus area.

Some of the issues that the UoB needs to address include:

- ▶ Complete the centralization and consolidation of IT

- ▶ Manage growth and increasing IT demand

- ▶ Demonstrate value through competitive, responsive and transparent services

Global City Services (GCITS)

GCITS is a global service provider which has grown through acquisition and which offers a wide range of services, including IT support, infrastructure and consulting. GCITS has mature and efficient IT service management processes, and holds an ISO/IEC 20000 certification.

GCITS provides the entire infrastructure and some cloud services for DriveYou.com, as well as a range of services in different countries to CruiseAlong Cars. Some of the issues that GCITS needs to address include:

- ▶ Succeed in establishing a strategic partnership with CruiseAlong Cars

Nevagon State Department of Transportation (NSDoT)

NSDot is a government agency in the US state of Nevagon, where DriveYou.com is running their trials. It is responsible for managing transportation systems and safety. DriveYou.com must work with the agency to ensure that their trials comply with safety regulations, and the program includes bi0directional sharing of large amounts of data.

The NSDoT's internal IT team writes and manages most of their agency-specific applications, however most other applications and infrastructure are provided by the Nevagon State central IT department.

CruiseAlong Cars central IT organization wants to implement a new ITSM toolset to replace their outdated system. The new ITSM toolset will be used by all CruiseAlong Cars' IT departments and their service desks.

The business case for the improvement has not been made yet. This could include financial contribution from various countries. The overall goal of the initiative is to achieve efficiencies and cost reductions through the centralization of processes and data for reporting across country-based IT departments.

The business case for a new ITSM toolset has been approved. The project manager will soon start the detailed planning.

What is the BEST way to communicate with key stakeholders, and at which step of the CSI approach?

A. During 'where are we now?' send an email to all IT country organizations describing the benefits of the project and inviting them to contribute.

B. During 'where are we now?' send an email to a selection of IT country organizations, requesting their involvement in the project.

C. During 'where do we want to be?' send an email to all IT country organizations describing the benefits of the project and inviting them to contribute.

D. During 'where do we want to be?' send an email selection of IT country organizations, requesting their involvement in the project.

**Answer: B**

## NEW QUESTION 19

See the scenario for additional informational.

(Note: The companies and people within the scenario are fictional)



Provides services to

GCITS provides the entire infrastructure and some cloud services for DriveYou.com, as well as a range of services in different countries to CruiseAlong Cars.

Some of the issues that GCITS needs to address include:

- ▶ Succeed in establishing a strategic partnership with CruiseAlong Cars

Nevagon State Department of Transportation (NSDoT)

NSDot is a government agency in the US state of Nevagon, where DriveYou.com is running their trials. It is responsible for managing transportation systems and safety. DriveYou.com must work with the agency to ensure that their trials comply with safety regulations, and the program includes bi0directional sharing of large amounts of data.

The NSDoT's internal IT team writes and manages most of their agency-specific applications, however most other applications and infrastructure are provided by the Nevagon State central IT department.

CruiseAlong Cars is planning to improve the provision and support of IT services for senior executives who travel. They will deploy new mobile technology to enhance the user experience. They will also improve the incident management and request fulfilment processes and standardize these across service desks.

They are taking an iterative approach and have released the first iteration of improvements. A project manager has been appointed for this improvement initiative.

The project manager is planning an assessment to verify that the improvements have been achieved in the first iteration of the project.

Which are the BEST two outputs of the assessment?

	Outputs
a)	Customer satisfaction; Process maturity of incident management and request fulfilment
b)	Process metrics; Organizational maturity of CruiseAlong Cars business units
c)	Customer satisfaction; Change readiness of CruiseAlong Cars IT departments
d)	Process metrics; SWOT analysis of all service management processes

- A. Customer satisfaction; Process maturity of incident management and request fulfilment
- B. Process metrics; Organizational maturity of CruiseAlong Cars' business units
- C. Customer satisfaction; Change readiness of CruiseAlong Cars' IT departments
- D. Process metrics; SWOT analysis of all service management processes.

**Answer: B**

## NEW QUESTION 20

See the scenario for additional informational.

CruiseAlong Cars

CruiseAlong Cars is a car manufacturing and sales company with corporate headquarters in the United States of America. It has grown by acquisition over the last 20 years and has operations in over 50 countries. Each country has its own IT organization, with some central corporate IT services provided by the US parent company. In some countries CruiseAlong Cars has outsourced infrastructure and service desks. The largest IT supplier is Global City IT Services (GCITS). In two countries GCITS provides CruiseAlong Cars with full outsourced services. They also provide selected services in other countries.

Some of the issues that CruiseAlong Cars needs to address include:

- ▶ Inefficiencies caused by the current IT structure
- ▶ Inconsistency of IT services when employees are travelling

CruiseAlong Cars is working with a European university (the University of Bachstein) to research and develop driverless car technology. The venture operates as an independent company called DriveYou.com, and CruiseAlong Cars owns a 51% share.

DriveYou.com

This is a small, innovative company, that is jointly owned by CruiseAlong Cars and the University of Bachstein

(UoB). DriveYou.com develops custom applications using a highly collaborative, rapid and iterative development approach. Their employees are mostly research and development experts, working from multiple locations, with a significant number working from home. Initial driverless car testing is being conducted in the US at the Nevegon State Department of Transportation.

Infrastructure and cloud services are purchased from Global City IT Services and other providers, and these relationships are managed by a DriveYou.com supplier manager.

Some of the issues that DriveYou.com needs to address include:

Better structure and accountability around their work practices Compliance with safety and other regulatory requirements.

University of Bachstein (UoB)

The UoB is a university that is based Germany, with a satellite campus in Kuala Lumpur, Malaysia. In the past, some IT services were funded and run centrally, and some were funded and run independently by each faculty. Centrally owned services include a 'walk-in' service desk, plus a separate service desk in the main library, run by library staff. Library services and IT are both part of the university's administrative services division. Recently, under a new CIO, there has been a drive to centralize and consolidate IT as a corporate function, although this has not been fully achieved.

The central IT department runs a variety of legacy systems, which serve students, administrators, researchers and academics. It also runs some high performance computing systems and high bandwidth networks across the main campus area.

Some of the issues that the UoB needs to address include:

- ▶ Complete the centralization and consolidation of IT
- ▶ Manage growth and increasing IT demand
- ▶ Demonstrate value through competitive, responsive and transparent services

Global City Services (GCITS)

GCITS is a global service provider which has grown through acquisition and which offers a wide range of services, including IT support, infrastructure and consulting. GCITS has mature and efficient IT service management processes, and holds an ISO/IEC 20000 certification.

GCITS provides the entire infrastructure and some cloud services for DriveYou.com, as well as a range of services in different countries to CruiseAlong Cars. Some of the issues that GCITS needs to address include:

- ▶ Succeed in establishing a strategic partnership with CruiseAlong Cars Nevagon State Department of Transportation (NSDoT)

NSDot is a government agency in the US state of Nevagon, where DriveYou.com is running their trials. It is responsible for managing transportation systems and safety. DriveYou.com must work with the agency to ensure that their trials comply with safety regulations, and the program includes bi0directional sharing of large amounts of data.

The NSDoT's internal IT team writes and manages most of their agency-specific applications, however most other applications and infrastructure are provided by the Nevagon State central IT department.



GCITS have a major audit coming up to verify continued compliance to the ISO/IEC 20000 standard. In preparation for the audit, they are conducting a series of internal audits.

GCITS has grown through acquisition. The latest acquisition, Optimsolv, does not comply with ISO/IEC 20000.

Optimsolv has a number of process improvements that need to be implemented to attain compliance. GCITS has six months to ensure that Optimsolv is compliant. The project manager is designing a resistance management plan for Optimsolv IT staff. Which is the BEST 'what's in it for me?' statement?

- A. "I am part of an important company initiative".
- B. "I can use the opportunity to learn valuable new skills".
- C. "Optimsolv gets ISO/IEC 20000 certification".
- D. "GCITS achieves its corporate goals".

**Answer: B**

#### NEW QUESTION 23

See the scenario for additional informational.

##### CruiseAlong Cars

CruiseAlong Cars is a car manufacturing and sales company with corporate headquarters in the United States of America. It has grown by acquisition over the last 20 years and has operations in over 50 countries. Each country has its own IT organization, with some central corporate IT services provided by the US parent company. In some countries CruiseAlong Cars has outsourced infrastructure and service desks. The largest IT supplier is Global City IT Services (GCITS). In two countries GCITS provides CruiseAlong Cars with full outsourced services. They also provide selected services in other countries.

Some of the issues that CruiseAlong Cars needs to address include:

- ▶ Inefficiencies caused by the current IT structure

- ▶ Inconsistency of IT services when employees are travelling

CruiseAlong Cars is working with a European university (the University of Bachstein) to research and develop driverless car technology. The venture operates as an independent company called DriveYou.com, and CruiseAlong Cars owns a 51% share.

##### DriveYou.com

This is a small, innovative company, that is jointly owned by CruiseAlong Cars and the University of Bachstein

(UoB). DriveYou.com develops custom applications using a highly collaborative, rapid and iterative development approach. Their employees are mostly research and development experts, working from multiple locations, with a significant number working from home. Initial driverless car testing is being conducted in the US at the Nevegon State Department of Transportation.

Infrastructure and cloud services are purchased from Global City IT Services and other providers, and these relationships are managed by a DriveYou.com supplier manager.

Some of the issues that DriveYou.com needs to address include:

- ▶ Better structure and accountability around their work practices

- ▶ Compliance with safety and other regulatory requirements.

##### University of Bachstein (UoB)

The UoB is a university that is based Germany, with a satellite campus in Kuala Lumpur, Malaysia. In the past, some IT services were funded and run centrally, and some were funded and run independently by each faculty. Centrally owned services include a 'walk-in' service desk, plus a separate service desk in the main library, run by library staff. Library services and IT are both part of the university's administrative services division. Recently, under a new CIO, there has been a drive to centralize and consolidate IT as a corporate function, although this has not been fully achieved.

The central IT department runs a variety of legacy systems, which serve students, administrators, researchers and academics. It also runs some high performance computing systems and high bandwidth networks across the main campus area.

Some of the issues that the UoB needs to address include:

- ▶ Complete the centralization and consolidation of IT

- ▶ Manage growth and increasing IT demand

- ▶ Demonstrate value through competitive, responsive and transparent services

##### Global City Services (GCITS)

GCITS is a global service provider which has grown through acquisition and which offers a wide range of services, including IT support, infrastructure and consulting. GCITS has mature and efficient IT service management processes, and holds an ISO/IEC 20000 certification.

GCITS provides the entire infrastructure and some cloud services for DriveYou.com, as well as a range of services in different countries to CruiseAlong Cars. Some of the issues that GCITS needs to address include:

- ▶ Succeed in establishing a strategic partnership with CruiseAlong Cars Nevegon State Department of Transportation (NSDoT)

NSDot is a government agency in the US state of Nevegon, where DriveYou.com is running their trials. It is responsible for managing transportation systems and safety. DriveYou.com must work with the agency to ensure that their trials comply with safety regulations, and the program includes bi0directional sharing of large amounts of data.

The NSDoT's internal IT team writes and manages most of their agency-specific applications, however most other applications and infrastructure are provided by the Nevegon State central IT department.

DriveYou.com decided to move the storage and management of their testing data to a new platform so that they can share it more effectively with the UoB. They also need to facilitate data transfer from new

CruiseAlong Cars research facilities in Japan and Australia.

- A. 'Timing and frequency matter' because 'where are we now?' requires that messages to all stakeholders are kept simple.
- B. 'There is no single correct method of communication because 'how do we get there?' requires coordination from a diverse range of stakeholders.
- C. 'Timing and frequency matter' because 'what is the vision?' will need regular reinforcement to ensure the execution of the project is a success.
- D. 'There is no single correct method of communication' because 'where do we want to be?' is different for every stakehold

**Answer: B**

#### NEW QUESTION 24

Which is the BEST example of the communication principle 'communication is a two-way process'?

- A. Passing on key messages from a briefing to a colleague who was unable to attend.
- B. Setting a calendar appointment for a team member's performance appraisal.
- C. Sending a meeting agenda to all attendees before every meeting.
- D. Capturing issues raised by attendees at the end of a company briefing

**Answer: D**

## NEW QUESTION 26

See the Scenario for additional information.

### CruiseAlong Cars

CruiseAlong Cars is a car manufacturing and sales company with corporate headquarters in the United States of America. It has grown by acquisition over the last 20 years and has operations in over 50 countries. Each country has its own IT organization, with some central corporate IT services provided by the US parent company. In some countries CruiseAlong Cars has outsourced infrastructure and service desks. The largest IT supplier is Global City IT Services (GCITS). In two countries GCITS provides CruiseAlong Cars with full outsourced services. They also provide selected services in other countries.

Some of the issues that CruiseAlong Cars needs to address include:

- ▶ Inefficiencies caused by the current IT structure
- ▶ Inconsistency of IT services when employees are travelling

CruiseAlong Cars is working with a European university (the University of Bachstein) to research and develop driverless car technology. The venture operates as an independent company called DriveYou.com, and CruiseAlong Cars owns a 51% share. DriveYou.com

This is a small, innovative company, that is jointly owned by CruiseAlong Cars and the University of Bachstein

(UoB). DriveYou.com develops custom applications using a highly collaborative, rapid and iterative development approach. Their employees are mostly research and development experts, working from multiple locations, with a significant number working from home. Initial driverless car testing is being conducted in the US at the Nevegon State Department of Transportation.

Infrastructure and cloud services are purchased from Global City IT Services and other providers, and these relationships are managed by a DriveYou.com supplier manager.

Some of the issues that DriveYou.com needs to address include:

- ▶ Better structure and accountability around their work practices
- ▶ Compliance with safety and other regulatory requirements.

### University of Bachstein (UoB)

The UoB is a university that is based Germany, with a satellite campus in Kuala Lumpur, Malaysia. In the past, some IT services were funded and run centrally, and some were funded and run independently by each faculty. Centrally owned services include a 'walk-in' service desk, plus a separate service desk in the main library, run by library staff. Library services and IT are both part of the university's administrative services division. Recently, under a new CIO, there has been a drive to centralize and consolidate IT as a corporate function, although this has not been fully achieved.

The central IT department runs a variety of legacy systems, which serve students, administrators, researchers and academics. It also runs some high performance computing systems and high bandwidth networks across the main campus area.

Some of the issues that the UoB needs to address include:

- ▶ Complete the centralization and consolidation of IT
- ▶ Manage growth and increasing IT demand
- ▶ Demonstrate value through competitive, responsive and transparent services

### Global City Services (GCITS)

GCITS is a global service provider which has grown through acquisition and which offers a wide range of services, including IT support, infrastructure and consulting. GCITS has mature and efficient IT service management processes, and holds an ISO/IEC 20000 certification.

GCITS provides the entire infrastructure and some cloud services for DriveYou.com, as well as a range of services in different countries to CruiseAlong Cars. Some

of the issues that GCITS needs to address include:

- Succeed in establishing a strategic partnership with CruiseAlong Cars

Nevagon State Department of Transportation (NSDoT)

NSDot is a government agency in the US state of Nevagon, where DriveYou.com is running their trials. It is responsible for managing transportation systems and safety. DriveYou.com must work with the agency to ensure that their trials comply with safety regulations, and the program includes bi0directional sharing of large amounts of data.

The NSDoT’s internal IT team writes and manages most of their agency-specific applications, however most other applications and infrastructure are provided by the Nevagon State central IT department.

CruiseAlong Cars is planning to improve the provision and support of IT services for senior executives who travel. They will deploy new mobile technology to enhance the user experience. They will also improve the incident management and request fulfilment processes and standardize these across service desks.

They are taking an iterative approach and have released the first iteration of improvements. A project manager has been appointed for this improvement initiative. The project manager is creating a set of metrics to measure the service provided to senior executives once the improvements have been made. There must be a balance of technology, process and service metrics.

	Metric
1	Average number of incidents resolved per agent per day
2	% of time that mobile users can send and receive emails
3	% availability of mobile access servers
4	Average cost of resolving incidents
5	Mean time between failure of mobile devices
6	Length of time to provide senior executives with new mobile device

Which set of metrics provides a suitable balance?

- A. 1, 3 and 4.
- B. 1, 5 and 6.
- C. 2, 3 and 5
- D. 2, 4 and 6

Answer: C

NEW QUESTION 31

See the scenario for additional informational.



#### CruiseAlong Cars

CruiseAlong Cars is a car manufacturing and sales company with corporate headquarters in the United States of America. It has grown by acquisition over the last 20 years and has operations in over 50 countries. Each country has its own IT organization, with some central corporate IT services provided by the US parent company. In some countries CruiseAlong Cars has outsourced infrastructure and service desks. The largest IT supplier is Global City IT Services (GCITS). In two countries GCITS provides CruiseAlong Cars with full outsourced services. They also provide selected services in other countries.

Some of the issues that CruiseAlong Cars needs to address include:

- ▶ Inefficiencies caused by the current IT structure
- ▶ Inconsistency of IT services when employees are travelling

CruiseAlong Cars is working with a European university (the University of Bachstein) to research and develop driverless car technology. The venture operates as an independent company called DriveYou.com, and CruiseAlong Cars owns a 51% share.

#### DriveYou.com

This is a small, innovative company, that is jointly owned by CruiseAlong Cars and the University of Bachstein

(UoB). DriveYou.com develops custom applications using a highly collaborative, rapid and iterative development approach. Their employees are mostly research and development experts, working from multiple locations, with a significant number working from home. Initial driverless car testing is being conducted in the US at the Nevagon State Department of Transportation.

Infrastructure and cloud services are purchased from Global City IT Services and other providers, and these relationships are managed by a DriveYou.com supplier manager.

Some of the issues that DriveYou.com needs to address include:

Better structure and accountability around their work practices Compliance with safety and other regulatory requirements.

#### University of Bachstein (UoB)

The UoB is a university that is based Germany, with a satellite campus in Kuala Lumpur, Malaysia. In the past, some IT services were funded and run centrally, and some were funded and run independently by each faculty. Centrally owned services include a 'walk-in' service desk, plus a separate service desk in the main library, run by library staff. Library services and IT are both part of the university's administrative services division. Recently, under a new CIO, there has been a drive to centralize and consolidate IT as a corporate function, although this has not been fully achieved.

The central IT department runs a variety of legacy systems, which serve students, administrators, researchers and academics. It also runs some high performance computing systems and high bandwidth networks across the main campus area.

Some of the issues that the UoB needs to address include:

- ▶ Complete the centralization and consolidation of IT
- ▶ Manage growth and increasing IT demand
- ▶ Demonstrate value through competitive, responsive and transparent services

#### Global City Services (GCITS)

GCITS is a global service provider which has grown through acquisition and which offers a wide range of services, including IT support, infrastructure and consulting. GCITS has mature and efficient IT service management processes, and holds an ISO/IEC 20000 certification.

GCITS provides the entire infrastructure and some cloud services for DriveYou.com, as well as a range of services in different countries to CruiseAlong Cars. Some of the issues that GCITS needs to address include:

- ▶ Succeed in establishing a strategic partnership with CruiseAlong Cars Nevagon State Department of Transportation (NSDoT)

NSDot is a government agency in the US state of Nevagon, where DriveYou.com is running their trials. It is responsible for managing transportation systems and safety. DriveYou.com must work with the agency to ensure that their trials comply with safety regulations, and the program includes bi0directional sharing of large amounts of data.

The NSDoT's internal IT team writes and manages most of their agency-specific applications, however most other applications and infrastructure are provided by the Nevagon State central IT department.

GCITS have a major audit coming up to verify continued compliance to the ISO/IEC 20000 standard. In preparation for the audit, they are conducting a series of internal audits.

GCITS has grown through acquisition. The latest acquisition, Optimsolv, does not comply with ISO/IEC 20000.

Optimsolv has a number of process improvements that need to be implemented to attain compliance. GCITS has six months to ensure that Optimsolv is compliant. Optimsolv has made the improvements identified in the audit. The GCITS IT Manager needs to determine that Optimsolv staff have accepted the required changes.

What is the BEST course of action for the GCITS IT Manager to take FIRST?

- A. Survey Optimsolv senior managers to gain general feedback on employee satisfaction.
- B. Carry out stakeholder analysis to determine which Optimsolv employees to survey.
- C. Directly observe impacted Optimsolv employees in their roles.
- D. Create a resistance management plan for Optimsolv employees.

**Answer: C**

#### NEW QUESTION 32

.....

## Relate Links

**100% Pass Your ITIL-Practitioner Exam with Exambible Prep Materials**

<https://www.exambible.com/ITIL-Practitioner-exam/>

## Contact us

We are proud of our high-quality customer service, which serves you around the clock 24/7.

Viste - <https://www.exambible.com/>