

F5-Networks

Exam Questions 201

TMOS Administration



NEW QUESTION 1

Which three iRule events are likely to be seen in iRules designed to select a pool for load balancing? (Choose three.)

- A. CLIENT_DATA
- B. SERVER_DATA
- C. HTTP_REQUEST
- D. HTTP_RESPONSE
- E. CLIENT_ACCEPTED
- F. SERVER_SELECTED
- G. SERVER_CONNECTED

Answer: ACE

NEW QUESTION 2

A BIG-IP Administrator explicitly creates a traffic group on a BIG-IP device.

Which two types of configuration objects can be associated with this traffic group? (Choose two.)

- A. Pool Members
- B. Virtual Addresses
- C. iRules
- D. VLANS
- E. Application Instances

Answer: BE

NEW QUESTION 3

Interface 1.2 on a BIG-IP VE has a status of UNINITIALIZED. What is the reason for this status?

- A. Interface 1.2 has been added to a trunk.
- B. Interface 1.2 has NOT been assigned to a VLAN.
- C. Interface 1.2 has been disabled.
- D. No default route has been created.

Answer: B

Explanation:

trunk is a portchannel, you need to add a physical interface.

NEW QUESTION 4

A BIG-IP Administrator sees the following error message in /var/log/ltm diskmonitor: *****; Disk partition shared has less than 30\$ free

Which section of the Configuration Utility should the BIG-IP Administrator access to investigate this error message?

- A. Statistics > Analytics
- B. System > File Management
- C. Statistics > Module Statistics > System
- D. System > Disk Management

Answer: D

NEW QUESTION 5

A BIG-IP has a virtual server at 150.150.10.10:80 with SNAT automap configured. This BIG-IP also has a SNAT at 150.150.10.11 set for a source address range of 200.200.1.0 / 255.255.255.0. All other settings are at their default states. If a client with the IP address 200.200.1.1 sends a request to the virtual server, what is the source IP address when the associated packet is sent to the pool member?

- A. 200.200.1.1
- B. 150.150.10.11
- C. Floating self IP address on VLAN where the packet leaves the system
- D. Floating self IP address on VLAN where the packet arrives on the system

Answer: C

NEW QUESTION 6

A BIG-IP Administrator configures remote authentication and needs to make sure that users can still login even when the remote authentication server is unavailable.

Which action should the BIG-IP Administrators in the remote authentication configuration to meet this requirement?

- A. Set partition access to "All"
- B. Enable the Fallback to Local option
- C. Configure a remote role grove
- D. Configure a second remote user directory

Answer: B

NEW QUESTION 7

A BIG-IP Administrator needs to purchase new licenses for a BIG-IP appliance.

The administrator needs to know if a module is licensed and the memory requirement for that module. Where should the administrator view this information in the System menu?

- A. Resource Provisioning
- B. Configuration > Device
- C. Software Management
- D. Configuration >OVSDB

Answer: A

NEW QUESTION 8

A BIG-IP Administrator is unable to connect to the management interface via HTTPS. What is a possible reason for this issue?

- A. The port lockdown setting is configured to Allow None.
- B. An incorrect management route is specified.
- C. The IP address of the device used to access the management interface is NOT included in the "P Allow" list in the Configuration Utility.
- D. The IP address of the device used to access the management interface is NOT included in the "httpd Allow" list in the CLI.

Answer: D

NEW QUESTION 9

A BIG-IP Administrator is configuring an SSH Pool with five members.

Which Health Monitor should be applied to ensure that available pool members are monitored accordingly?

- A. https
- B. udp
- C. http
- D. tcp

Answer: D

NEW QUESTION 10

DNS queries from two internal DNS servers are being load balanced to external DNS Servers via a Virtual Server on a BIG-P device. The DNS queries originate from 192.168.101.100 and 192.168.101.200 and target 192.168.21.50

All DNS queries destined for the external DNS Servers fail

Which property change should the BIG-IP Administrator make in the Virtual Server to resolve this issue?

- A. Protocol Profile (Client) to DNS-OPTIMZED
- B. Type to Performance (HTTP)
- C. Protocol to UDP
- D. Source Address to 192.168.101.0/24

Answer: C

NEW QUESTION 10

The BIG-IP appliance fails to boot. The BIG-IP Administrator needs to run the End User Diagnostics (EUD) utility to collect data to send to F5 Support.

Where can the BIG-IP Administrator access this utility?

- A. Console Port
- B. Internal VLAN interface
- C. External VLAN interface
- D. Management Port

Answer: A

NEW QUESTION 15

What is the purpose of floating self-IP addresses?

- A. to define an address that grants administrative access to either system at any time
- B. to define an address that allows either system to initiate communication at any time
- C. to define an address that allows network devices to route traffic via a single IP address
- D. to define an address that gives network devices greater flexibility in choosing a path to forward traffic

Answer: C

NEW QUESTION 18

Refer to the exhibit.



A BIG-IP Administrator needs to configure health monitors for a newly configured server pool named Pool_B. Which health monitor settings will ensure that all pool members will be accurately marked as available or unavailable?

- A. HTTPS, HTTP, FTP, and ICMP, with the Availability Requirement of all health monitors
- B. HTTPS, HTTP, FTP, and SSH, with the Availability Requirement of at least one monitor
- C. HTTPS and HTTP with the Availability Requirement of at least one health monitor
- D. HTTPS, HTTP, FTP, and SSH with the Availability Requirement of all health monitors

Answer: B

Explanation:

From the port, the four members are HTTP, FTP, HTTPS, and SSH applications. If you want to monitor at the same time, you must configure at least one.

NEW QUESTION 23

A web server administrator informs the BIG-IP Administrator that web servers are overloaded Starting next month, the BIG-IP device will terminate SSL to reduce web server load. The BIG-IP device is ready using client SSL client profile and Rules on HTTP level. What actions should the BIG-IP Administrators to achieve the desired configuration?

- A. Remove the server SSL profile and configure the Pool Members to use HTTP
- B. Remove the client SSL profile and configure the Pool Members to US HTTP
- C. Remove the chart SSL profile and change the Virtual Server to accept HTTP
- D. Remove the server SSL profile and change the Virtual Server to accept HTTP traffic

Answer: A

NEW QUESTION 28

Refer to the exhibit.



A BIG-IP Administrator creates a new Virtual Server to load balance SSH traffic. Users are unable to log on to the servers. What should the BIG-IP Administrator do to resolve the issue?

- A. Set Protocol to UDP
- B. Set HTTP Profile to None
- C. Set Source Address to 10.1.1.2
- D. Set Destination Addresses/Mask to 0.0.0.0/0

Answer: B

NEW QUESTION 33

An LTM device has a virtual server mapped to www.f5.com with a pool assigned. Users report that when browsing, they are periodically required to re-login to /resources/201.1.7.b.2_l.com. The objects are defined as follows:

Virtual server. Destination 192.168.245.100:443 netmask 255.255.255.0 Persistence: SSL session persistence

Profiles: HTTP/TCP

Which persistence method should the BIG-IP Administrator apply to resolve this issue?

- A. Source address affinity

- B. hexadecimal
- C. SIP
- D. Destination address affinity

Answer: A

NEW QUESTION 36

A BIG-IP Administrator finds the following log entry:

tmm tmm[7141]: 011e0002:4: sweeperjupdate: aggressive mode activated. Which action should the BIG-IP Administrator to mitigate this memory issue?

- A. Configure the redundant par to be active-active
- B. Decrease the TCP profile ide Timeout value
- C. increase the TCP profile ide Timeout value
- D. Configure the serve to use Connection Mirroring

Answer: D

NEW QUESTION 41

During a maintenance window, an EUD test was executed and the output displayed on the screen. The BIG-IP Administrator did NOT save the screen output. The BIG-IP device is currently handling business critical traffic. The BIG-IP Administrator needs to minimize impact. What should the BIG-IP Administrator do to provide the EUD results to F5 Support?

- A. Boot the device into EUD then collect output from console
- B. Execute EUD from tmsh and collect output from console
- C. Collect file /var/log/messages
- D. Collect file /shared/log/eud.log

Answer: D

NEW QUESTION 42

A site wishes to perform source address translation on packets from some clients but not others. The determination is not based on the client's IP address, but on the virtual servers their packets arrive on. What could best accomplish this goal?

- A. A SNAT for all addresses could be defined, and then disable the SNAT processing for select VLANs.
- B. Some virtual servers could be associated with SNAT pools and others not associated with SNAT pools.
- C. The decision to perform source address translation is always based on VLA
- D. Thus, the goal cannot be achieved.
- E. The decision to perform source address translation is always based on a client's address (or network).Thus, this goal cannot be achieved.

Answer: B

NEW QUESTION 45

A BIG-IP Administrator configures a Virtual Server. Users report that they always receive a TCP RST packet to the BIG-IP system when attempting to connect to it. What is the possible reason for this issue?

- A. The virtual server Type is set to Internal
- B. The virtual server Type is set to Reject
- C. The virtual server Type is set to Drop
- D. The virtual server Type is set to Stateless

Answer: B

NEW QUESTION 48

Refer to the exhibit.



A pool member fails the monitor checks for about 30 minutes and then starts passing the monitor checks. New traffic is Not being sent to the pool member. What is the likely reason for this problem?

- A. The pool member is disabled
- B. Monitor Type is TCP Half Open
- C. Manual resume is enabled
- D. Time Until Up is zero

Answer: C

NEW QUESTION 50

Refer to the exhibit

The BIG-IP Administrator is unable to access the management console via Self-IP 10.10 1.33 and port 443. What is the reason for this problem?

- A. Packet Filter needs to be configured to allow a source
- B. Self IP is configured to allow TCP All
- C. Self IP is configured to allow UDP 443
- D. Packet Filter is configured to allow port 443

Answer: C

NEW QUESTION 54

A BIG-IP Administrator needs to collect HTTP status code and HTTP method for traffic flowing through a virtual server. Which default profile provides this information?

- A. HTTP
- B. Analytics
- C. Request Adapt
- D. Statistics

Answer: A

NEW QUESTION 56

A virtual server is listening at 10.10.1.100:any and has the following iRule associated with it: when CLIENT_ACCEPTED { if {[TCP::local_port] equals 21 } { pool ftpool } elseif {[TCP::local_port] equals 23 } { pool telnetpool } }

If a user connects to 10.10.1.100 and port 22, which pool will receive the request?

- A. ftpool
- B. telnetpool
- C. Non
- D. The request will be dropped.
- E. Unknow
- F. The pool cannot be determined from the information provided.

Answer: D

NEW QUESTION 61

An ecommerce company is experiencing latency issues with online shops during Black Friday's peak season. The BIG-IP Administrator detects an overall high

CPU load on the BIG-IP device and wants to move the top utilized Virtual Servers to a dedicated BIG-IP device. Where should the BIG-IP Administrator determine the problematic Virtual Servers?

- A. System > Plattform
- B. Local Traffic > Virtual Servers > Virtual Server List
- C. Local Traffic > Network Map
- D. Statistics > Module Statistics > Local Traffic > Virtual Servers

Answer: D

NEW QUESTION 65

Refer to the exhibit.

A user notifies the BIG-IP Administrator that <http://remote.company.com> is NOT accessible. Remote access to company resources must be encrypted. What should the BIG-IP Administrator do to fix the issue?

- A. Change the Listening Port on remote.company.com_vs to Port 80
- B. Add a Pool to the Virtual Server remote.company.com_VS
- C. Add an iRule to remote.company.com_vs to redirect Traffic to HTTPS
- D. Change the Type of the Virtual Server remote.company.com_vs to Forwarding

Answer: C

Explanation:

Requiring all traffic to be HTTPS access requires HTTP requests to be redirected directly to HTTPS.

NEW QUESTION 69

The interface 1.1 of the BIG-IP device has been connected to a link dedicated to traffic on VLAN 120. What should the BIG-IP Administrator do to receive traffic from the VLAN?

- A. Create a new VLAN object and set Customer Tag to 120
- B. Create a new VLAN object and assign the interface 1.1 untagged
- C. Create a new trunk object with interface 1.1 assigned
- D. Create a new trunk object and assign it to the VLAN

Answer: B

NEW QUESTION 73

How is MAC masquerading configured?

- A. Specify the desired MAC address for each VLAN for which you want this feature enabled.
- B. Specify the desired MAC address for each selfIP address for which you want this feature enabled.
- C. Specify the desired MAC address for each VLAN on the active system and synchronize the systems.
- D. Specify the desired MAC address for each floating selfIP address for which you want this feature enabled.

Answer: A

NEW QUESTION 78

A BIG-IP Administrator opens a case with F5 Support. The support engineer requests the BIG-IP appliance chassis serial number. Which TMSH command will provide this information?

- A. . list /sys software
- B. show /sys version
- C. list/sys diags
- D. show /sys hardware

Answer: D

NEW QUESTION 79

Assume a virtual server has a ServerSSL profile. What SSL certificates are required on the pool members?

- A. No SSL certificates are required on the pool members.
- B. The pool members.SSL certificates must only exist.
- C. The pool members.SSL certificates must be issued from a certificate authority.
- D. The pool members.SSL certificates must be created within the company hosting the BIGIPs.

Answer: B

NEW QUESTION 82

Refer to the exhibit.



How many nodes are represented on the network map shown?

- A. Four
- B. Three
- C. One
- D. Two

Answer: B

NEW QUESTION 86

A user wants to use the iHealth Upgrade Advisor to determine any issues with upgrading TMOS from 13.0 to 13.1. Where can the user generate the QKView to upload to iHealth?

- A. System > Software Management
- B. System > Archives
- C. System > Configuration
- D. System > Support

Answer: D

NEW QUESTION 90

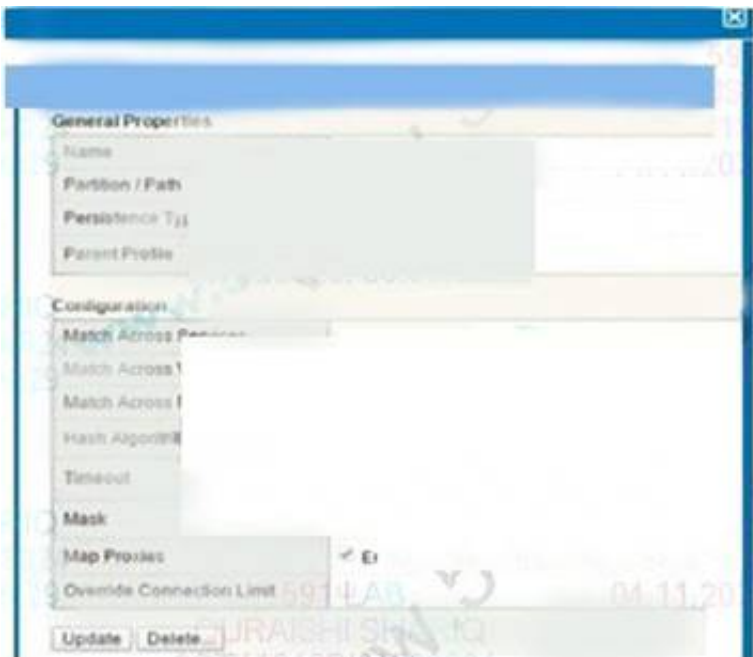
As a part of the Setup Utility, the administrator sets the host name for the BIG IP. What would be the result if the two systems in a redundant pair were set to the same host name?

- A. Host names do not matter in redundant pair communication.
- B. In a redundant pair, the two systems will always have the same host name.
- C. The parameter is synchronized between the systems.
- D. The first time the systems are synchronized the receiving system will be assigned the same self-IP addresses as the source system.
- E. When the administrator attempts to access the configuration utility using the host name, they will always connect to the active system.

Answer: C

NEW QUESTION 95

Refer to the exhibit.



How long will the persistence record remain in the table?

- A. 180 seconds after the last packet
- B. 180 seconds after the initial table entry
- C. 300 seconds after the initial table entry
- D. 300 seconds after the last packet

Answer: D

NEW QUESTION 97

Which is an advantage of terminating SSL communication at the BIGIP rather than the ultimate web server?

- A. Terminating SSL at the BIG-IP can eliminate SSL processing at the web servers.
- B. Terminating SSL at IP the eliminates BIG all unencrypted traffic from the internal network.
- C. Terminating SSL at the BIG-IP eliminates the need to purchase SSL certificates from a certificate authority.
- D. Terminating SSL at the BIG-IP eliminates the need to use SSL acceleration hardware anywhere in the network.

Answer: A

NEW QUESTION 98

A BIG-IP Administrator is working with a BIG-IP device and discovers that one of the Interfaces on a Trunk is DOWN. What is the reason for this Interface status?

- A. The switch is NOT connected to the Interface
- B. There is NO transceiver installed on the Interface
- C. There is NO default route configured for this trunk
- D. The media speed of the interface has NOT been set

Answer: A

NEW QUESTION 99

The BIG-IP Administrator needs to ensure the correct health monitor is being used for a new HTTP pool named P_example. Where should the BIG-IP Administrator validate these settings in the Configuration Utility?

- A. Local Traffic > Nodes > Default Monitor
- B. Local Traffic > Profiles > Services > HTTP > http
- C. Local Traffic > Monitors > http
- D. Local Traffic > Pools > P_example

Answer: D

NEW QUESTION 103

A standard virtual server has been associated with a pool with multiple members. Assuming all other settings are left at their defaults, which statement is always true concerning traffic processed by the virtual server?

- A. The client IP address is unchanged between the client side connection and the serverside connection.
- B. The server IP address is unchanged between the client side connection and the serverside connection.
- C. The TCP ports used in the client side connection are the same as the TCP ports serverside connection.
- D. The IP addresses used in the clientside connection are the same as the IP addresses used in the serverside connection.

Answer: A

NEW QUESTION 106

Which method is recommended for creating a new user from the CLI?

- A. Run f5adduser username' then 'f5passwd username' from bash or tmsh
- B. Run tmsh create auth user username prompt for password' from bash
- C. edit bigip.conf to add the new user and the user's clear-text password
- D. Run useradd username' then 'passwd username' from bash tmsh

Answer: B

NEW QUESTION 109

Which two statements are true concerning the default communication between a redundant pair of BIG-IP systems? (Choose two.)

- A. Synchronization occurs via a TCP connection using ports 683 and 684.
- B. Connection mirroring data is shared via a TCP connection using port 1028.
- C. Persistence mirroring data is shared via a TCP connection using port 1028.
- D. Connection mirroring data is shared through the serial fail over cable unless network failover is enabled.

Answer: BC

NEW QUESTION 113

Which process or system can be monitored by the BIG-IP system and used as a failover trigger in a redundant pair configuration?

- A. bandwidth utilization
- B. duplicate IP address
- C. CPU utilization percentage
- D. VLAN communication ability

Answer: D

NEW QUESTION 116

For a given Virtual Server, the BIG-IP must perform SSL Offload and negotiate secure communication over TLSv1.2 only. What should the BIG-IP Administrator do to meet this requirement?

- A. Configure a custom SSL Profile (Client) and select no TLSv1 in the options list
- B. Configure a custom SSL Profile (Client) with a custom TLSV1.2 cipher string
- C. Configure a custom SSL Profile (Server) and select no TLSv1 in the options list
- D. Configure a custom SSL Profile (Server) with a custom TLSV1.2 cipher string

Answer: B

Explanation:

no TLSv1 only disables TLS1.0, TLS1.1 is still used and does not meet the requirements.

NEW QUESTION 119

During a high-demand traffic event, the BIG-IP Administrator needs to limit the number of new connections per second allowed to a Virtual Server. What should the administrator apply to accomplish this task?

- A. An HTTP Compression profile to the Virtual Server
- B. A connection rate limit to the Virtual Server
- C. A connection limit to the Virtual Server
- D. A OneConnect profile to the Virtual Server

Answer: B

NEW QUESTION 120

A BIG-IP Administrator needs to find which modules have been licensed for use on the BIG-IP system. In which section of the Configuration Utility can the BIG-IP Administrator find this information?

- A. System > Services
- B. System > Resource Provisioning
- C. System > Platform
- D. System > Support

Answer: B

NEW QUESTION 124

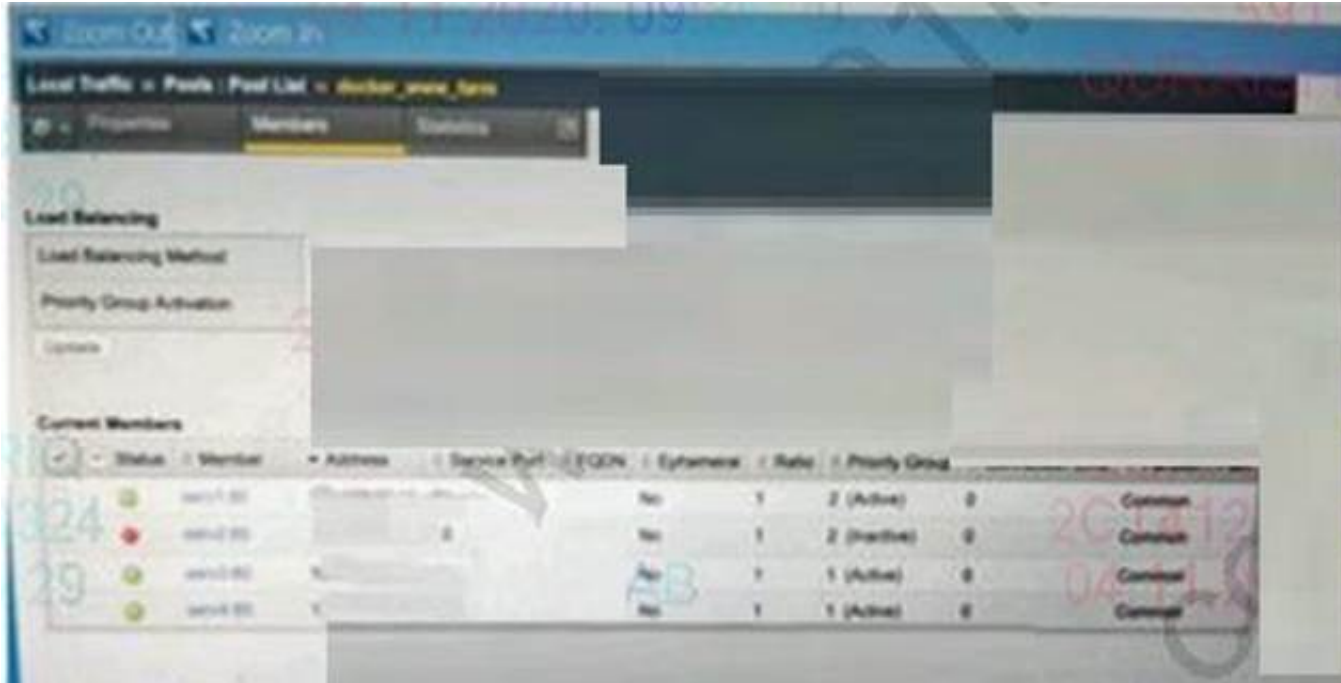
A BIG-IP Administrator wants to add a new Self IP to the BIG-IP device. Which item should be assigned to the new Self IP being configured?

- A. Interface
- B. Route
- C. VLAN
- D. Trunk

Answer: C

NEW QUESTION 128

Refer to the exhibit.



Status	Member	Address	Service Port	EQDN	Endpoint	Rate	Priority Group
Active	serv1	10.10.10.10	80	No	1	2 (Active)	Common
Inactive	serv2	10.10.10.11	80	No	1	2 (Inactive)	Common
Active	serv3	10.10.10.12	80	No	1	1 (Active)	Common
Active	serv4	10.10.10.13	80	No	1	1 (Active)	Common

Which Pool Members are receiving traffic?

- A. Serv1, serv2, serv3, serv4
- B. serv1, serv3
- C. serv1, serv3, serv4
- D. serv1

Answer: C

NEW QUESTION 131

An IT support engineer needs to access and modify Virtual Servers in three partitions (Common /Banking and Dev) daily on a BIG-IP device. The company operates a Least Privilege access policy. What level of access does the IT support engineer need to ensure completion of daily roles?

- A. Manager in /common/Banking, and /Dev partitions
- B. Application Editor in /Common, /Banking, and /Dev partitions
- C. Manager in all partitions
- D. Application Editor in all partitions

Answer: A

NEW QUESTION 133

Which three statements describe a characteristic of profiles? (Choose three.)

- A. Default profiles cannot be created or deleted.
- B. Custom profiles are always based on a parent profile.
- C. A profile can be a child of one profile and a parent of another.
- D. All changes to parent profiles are propagated to their child profiles.
- E. While most virtual servers have at least one profile associated with them, it is not required.

Answer: ABC

NEW QUESTION 135

Assume a virtual server is configured with a ClientSSL profile. What would the result be if the virtual server's destination port were not 443?

- A. SSL termination could not be performed if the virtual server's port was not port 443.
- B. Virtual servers with a ClientSSL profile are always configured with a destination port of 443.
- C. As long as client traffic was directed to the alternate port, the virtual server would work as intended.
- D. Since the virtual server is associated with a ClientSSL profile, it will always process traffic sent to port 443.

Answer: C

NEW QUESTION 140

A BIG-IP Administrator needs to configure the BIG-IP system to perform load balancing for FTP servers running passive mode FTP. How should the administrator configure the Virtual Server to perform this load balancing?

- A. A Standard Virtual Server + FTP profile
- B. A Forwarding Virtual Server
- C. A Performance Layer 4 Virtual Server + FTP profile
- D. A Message Routing Virtual Server

Answer: A

NEW QUESTION 142

A BIG-IP Administrator is configuring a pool with members who have differing capabilities. Connections to pool members must be load balanced appropriately. Which load balancing method should the BIG-IP Administrator use?

- A. Least Sessions
- B. Least Connections (member)
- C. Fastest (node)
- D. Weighted Least Connections (member)

Answer: D

NEW QUESTION 143

A site needs to terminate client HTTPS traffic at the BIG-IP and forward that traffic unencrypted. Which two are profile types that must be associated with such a virtual server? (Choose two.)

- A. TCP
- B. HTTP
- C. HTTPS
- D. ClientSSL
- E. ServerSSL

Answer: AD

NEW QUESTION 144

The BIG-IP Administrator disable all pool members in a pool Users are still able to reach the pool members. What is allowing users to continue to reach the disabled poo! members?

- A. A slow to time on Pool
- B. A persistence profile on the Virtual Server
- C. A slow ramp time on virtual Server
- D. A persistence profile on the Pool

Answer: B

NEW QUESTION 149

.....

Thank You for Trying Our Product

We offer two products:

1st - We have Practice Tests Software with Actual Exam Questions

2nd - Questions and Answers in PDF Format

201 Practice Exam Features:

- * 201 Questions and Answers Updated Frequently
- * 201 Practice Questions Verified by Expert Senior Certified Staff
- * 201 Most Realistic Questions that Guarantee you a Pass on Your FirstTry
- * 201 Practice Test Questions in Multiple Choice Formats and Updatesfor 1 Year

100% Actual & Verified — Instant Download, Please Click
[Order The 201 Practice Test Here](#)