

Cisco

Exam Questions 350-901

Developing Applications using Cisco Core Platforms & APIs



NEW QUESTION 1

A developer has created an application based on customer requirements. The customer needs to run the application with the minimum downtime. Which design approach regarding high-availability applications, Recovery Time Objective, and Recovery Point Objective must be taken?

- A. Active/passive results in lower RTO and RP
- B. For RPO, data synchronization between the two data centers must be timely to allow seamless request flow.
- C. Active/passive results in lower RTO and RP
- D. For RPO, data synchronization between the two data centers does not need to be timely to allow seamless request flow.
- E. Active/active results in lower RTO and RP
- F. For RPO, data synchronization between the two data centers does not need to be timely to allow seamless request flow.
- G. Active/active results in lower RTO and RP
- H. For RPO, data synchronization between the two data centers must be timely to allow seamless request flow.

Answer: A

NEW QUESTION 2

An organization manages a large cloud-deployed application that employs a microservices architecture. No notable issues occur with downtime because the services of this application are redundantly deployed over three or more data center regions. However, several times a week reports are received about application slowness. The container orchestration logs show faults in a variety of containers that cause them to fail and then spin up brand new. Which action must be taken to improve the resiliency design of the application while maintaining current scale?

- A. Update the base image of the containers.
- B. Test the execution of the application with another cloud services platform.
- C. Increase the number of containers running per service.
- D. Add consistent “try/catch(exception)” clauses to the code.

Answer: D

NEW QUESTION 3

How should a web application be designed to work on a platform where up to 1000 requests per second can be served?

- A. Use algorithms like random early detection to deny excessive requests.
- B. Set a per-user limit (for example, 5 requests/minute/user) and deny the requests from the users who have reached the limit.
- C. Only 1000 user connections are allowed; further connections are denied so that all connected users can be served.
- D. All requests are saved and processed one by one so that all users can be served eventually.

Answer: D

NEW QUESTION 4

An organization manages a large cloud-deployed application that employs a microservices architecture across multiple data centers. Reports have received about application slowness. The container orchestration logs show that faults have been raised in a variety of containers that caused them to fail and then spin up brand new instances.

Which two actions can improve the design of the application to identify the faults? (Choose two.)

- A. Automatically pull out the container that fails the most over a time period.
- B. Implement a tagging methodology that follows the application execution from service to service.
- C. Add logging on exception and provide immediate notification.
- D. Do a write to the datastore every time there is an application failure.
- E. Implement an SNMP logging system with alerts in case a network link is slow.

Answer: BC

NEW QUESTION 5

A network operations team is using the cloud to automate some of their managed customer and branch locations. They require that all of their tooling be ephemeral by design and that the entire automation environment can be recreated without manual commands. Automation code and configuration state will be stored in git for change control and versioning. The engineering high-level plan is to use VMs in a cloud-provider environment then configure open source tooling onto these VMs to poll, test, and configure the remote devices, as well as deploy the tooling itself.

Which configuration management and/or automation tooling is needed for this solution?

- A. Ansible
- B. Ansible and Terraform
- C. NSO
- D. Terraform
- E. Ansible and NSO

Answer: B

NEW QUESTION 6

An application is hosted on Google Kubernetes Engine. A new JavaScript module is created to work with the existing application. Which task is mandatory to make the code ready to deploy?

- A. Create a Dockerfile for the code base.
- B. Rewrite the code in Python.
- C. Build a wrapper for the code to “containerize” it.
- D. Rebase the code from the upstream git repo.

Answer: D

NEW QUESTION 7

Which database type should be used with highly structured data and provides support for ACID transactions?

- A. time series
- B. document
- C. graph
- D. relational

Answer: D

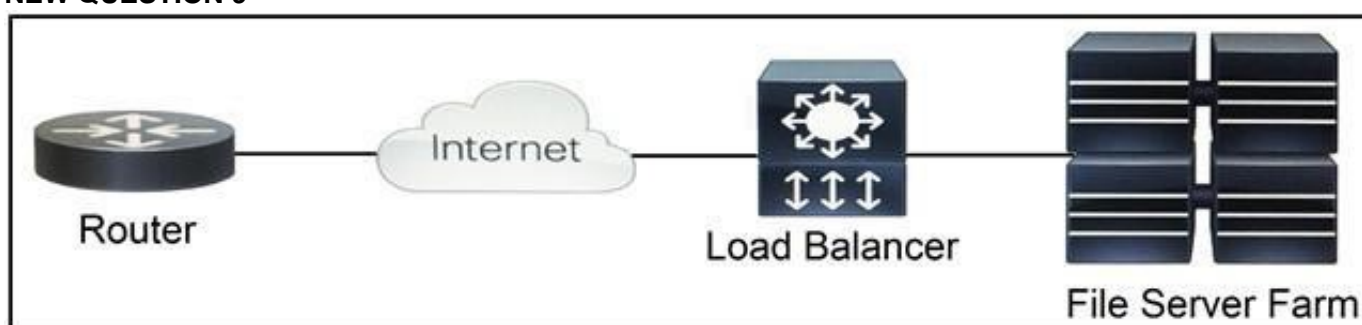
NEW QUESTION 8

Where should distributed load balancing occur in a horizontally scalable architecture?

- A. firewall-side/policy load balancing
- B. network-side/central load balancing
- C. service-side/remote load balancing
- D. client-side/local load balancing

Answer: B

NEW QUESTION 9



Refer to the exhibit. Which two functions are performed by the load balancer when it handles traffic originating from the Internet destined to an application hosted on the file server farm? (Choose two.)

- A. Terminate the TLS over the UDP connection from the router and originate an HTTPS connection to the selected server.
- B. Terminate the TLS over the UDP connection from the router and originate an HTTP connection to the selected server.
- C. Terminate the TLS over the TCP connection from the router and originate an HTTP connection to the selected server.
- D. Terminate the TLS over the TCP connection from the router and originate an HTTPS connection to the selected server.
- E. Terminate the TLS over the SCTP connection from the router and originate an HTTPS connection to the selected server.

Answer: DE

NEW QUESTION 10

A user is receiving a 429 Too Many Requests error. Which scheme is the server employing that causes this error?

- A. rate limiting
- B. time outs
- C. caching
- D. redirection

Answer: A

NEW QUESTION 10

```
import request
import json

meraki_api_key = "<api key>"
url =
"https://api.meraki.com/api/v0/organizations/12345567890/devices"
headers = {
    "X-Cisco-Meraki-API-Key": meraki_api_key,
}
params = {
    "perPage": 3
}
res = requests.get(url, headers=headers, params=params)
formatted_message = """
Meraki Dashboard API Response
-----
Response Status Code : {}
Response Link Header : {}
Response Body       : {}
-----
""".format(res.status_code, res.headers.get('Link'),
json.dumps(res.json(), indent=4))
print(formatted_message)
```

```
<https://n6.meraki.com/api/v0/organizations/1234567890/devices?perPage=
3&startingAfter=0000-0000-0000>; rel=first,
<https://n6.meraki.com/api/v0/organizations/1234567890/devices?perPage=
3&startingAfter=Q2EK-3UBE-RRUY>; rel=next,
<https://n6.meraki.com/api/v0/organizations/1234567890/devices?
endingBefore=zzzz-zzzz-zzzz&perPage=3>; rel=last
```

Refer to the exhibit. Which line of code must be added to this code snippet to allow an application to pull the next set of paginated items?

- A. requests.get(url, links=['next']['url'])
- B. requests.get(url, headers=links['next']['url'])
- C. requests.get(res.links['next']['url'], headers=headers)
- D. requests.get(res.headers.get('Link')['next']['url'], headers=headers)

Answer: C

NEW QUESTION 14

An Etag header is included in the HTTP response for an API resource. What are two benefits of using the value of the Etag for future interactions involving the same API resource? (Choose two.)

- A. caching and optimization of response payloads
- B. creating conditional requests
- C. categorizing and comparing this API resource with others
- D. checking the integrity of the resource
- E. requesting the list of operations authorized for this resource

Answer: AB

NEW QUESTION 15

Which RFC5988 (Web Linking) relation type is used in the Link header to control pagination in APIs?

- A. rel="index"
- B. rel="page"
- C. rel="next"
- D. rel="section"

Answer: C

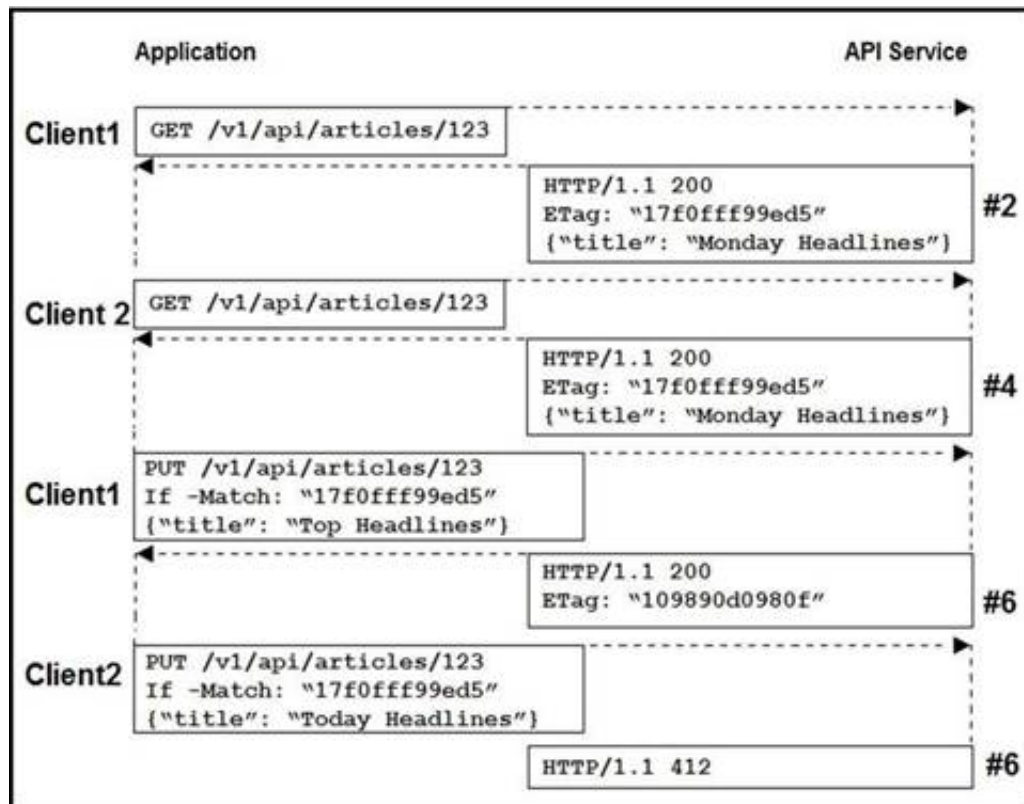
NEW QUESTION 17

A client is written that uses a REST API to interact with a server. Using HTTPS as the transport, an HTTP request is sent and received an HTTP response. The response contains the HTTP response status code: 503 Service Unavailable. Which action is the appropriate response?

- A. Add an Authorization header that supplies appropriate credentials and sends the updated request.
- B. Resend the request using HTTP as the transport instead of HTTPS.
- C. Add an Accept header that indicates the content types that the client understands and send the updated request.
- D. Look for a Retry-After header in the response and resend the request after the amount of time indicated.

Answer: A

NEW QUESTION 20



Refer to the exhibit. Two editors are concurrently updating an article's headline from their mobile devices. What results from this scenario based on this REST API sequence?

- A. The article is marked as "Conflicted"
- B. The article headline is "Monday Headlines"
- C. The article headline is "Today Headlines"
- D. The article headline is "Top Headlines"

Answer: B

NEW QUESTION 24

AppGigabitEthernet interface is used as data port for a container on a Cisco Catalyst 9000 Series Switch. Which two interface configuration options should be used? (Choose two.)

- A. trunk interface
- B. bridged virtual interface
- C. SPAN port
- D. management interface
- E. subinterface

Answer: AC

NEW QUESTION 26

Which two types of storage are supported for app hosting on a Cisco Catalyst 9000 Series Switch? (Choose two.)

- A. external USB storage
- B. internal SSD
- C. CD-ROM
- D. SD-card
- E. bootflash

Answer: AB

NEW QUESTION 28

There is a requirement to securely store unique usernames and passwords. Given a valid username, it is also required to validate that the password provided is correct. Which action accomplishes this task?

- A. Encrypt the username, hash the password, and store these values.
- B. Hash the username, hash the password, and store these values.
- C. Encrypt the username, encrypt the password, and store these values.
- D. Hash the username, encrypt the password, and store these values.

Answer: A

NEW QUESTION 30

While developing an application following the 12-factor app methodology, which approach should be used in the application for logging?

- A. Write a log to a file in the application directory.
- B. Write a log to a file in /var/log.
- C. Write the logs buffered to stdout.
- D. Write the logs unbuffered to stdout.

Answer: D

NEW QUESTION 33

A web application is susceptible to cross-site scripting. Which two methods allow this issue to be mitigated? (Choose two.)

- A. Use only drop downs.
- B. Limit user input to acceptable characters.
- C. Encrypt user input on the client side.
- D. Use AES encryption to secure the script.
- E. Remove all HTML/XML tags from user input.

Answer: BD

NEW QUESTION 35

A developer has just completed the configuration of an API that connects sensitive internal systems. Based on company policies, the security of the data is a high priority. Which approach must be taken to secure API keys and passwords?

- A. Embed them directly in the code.
- B. Store them in a hidden file.
- C. Store them inside the source tree of the application.
- D. Change them periodically.

Answer: D

NEW QUESTION 40

Which type of file is created from issued intermediate, root, and primary certificates for SSL installation on a server?

- A. DER
- B. CSR
- C. PEM
- D. CRT

Answer: C

NEW QUESTION 41

```
open_file = open("text_file.txt", "r")
read_file = open_file.read()
print(read_file)
```

Refer to the exhibit. a developer created the code, but it fails to execute. Which code snippet helps to identify the issue?

- A.

```
try:
    open_file = open("text_file.txt", "r")
    read_file = open_file.read()
    print(read_file)
except:
    print("File not there")
```
- B.

```
try:
    print("File not there")
except:
    open_file = open("text_file.txt", "r")
    read_file = open_file.read()
    print(read_file)
```
- C.

```
try:
    open_file = open("text_file.txt", "r")
    read_file = open_file.read()
    print(read_file)
except:
    print("File not there")
catch:
    error(read_file)
```
- D.

```
open_file = open("text_file.txt", "r")
read_file = open_file.read()
try:
    print(read_file)
except:
    print("File not there")
```

Answer: C

NEW QUESTION 46

```
name: VRFs
ios_vrf:
  vrfs: "{{ local_vrfs }}"
  state: present
  purge: yes
```

Refer to the exhibit. The YAML represented is using the ios_vrf module. As part of the Ansible playbook workflow, what is the result when this task is run?

- A. VRFs not defined in the host_vars file are removed from the device.
- B. VRFs not defined in the host_vars file are added to the device, and any other VRFs on the device remain.
- C. VRFs defined in the host_vars file are removed from the device.
- D. VRFs are added to the device from the host_vars file, and any other VRFs on the device are removed.

Answer: D

NEW QUESTION 49

A developer needs to configure an environment to orchestrate and configure. Which two tools should be used for each task? (Choose two.)

- A. Puppet for orchestration
- B. Terraform for orchestration
- C. Terraform for configuration
- D. Ansible for orchestration
- E. Ansible for configuration

Answer: BE

NEW QUESTION 53

.....

Thank You for Trying Our Product

We offer two products:

1st - We have Practice Tests Software with Actual Exam Questions

2nd - Questions and Answers in PDF Format

350-901 Practice Exam Features:

- * 350-901 Questions and Answers Updated Frequently
- * 350-901 Practice Questions Verified by Expert Senior Certified Staff
- * 350-901 Most Realistic Questions that Guarantee you a Pass on Your First Try
- * 350-901 Practice Test Questions in Multiple Choice Formats and Updates for 1 Year

100% Actual & Verified — Instant Download, Please Click
[Order The 350-901 Practice Test Here](#)